

Converting Colors

XYZ(63.5058, 65.4602, 62.4811)

Have a look what the booklet for
XYZ(63.5058, 65.4602, 62.4811)
contains.

XYZ(63.4249, 65.3661, 62.7002)	3
<i>Conversions</i>	4
<i>Details</i>	6
<i>Harmonies</i>	12
<i>Previews</i>	24
<i>Color Blindness Simulation</i>	28
<i>CSS Examples</i>	31

Color

**XYZ(63.4249, 65.3661,
62.7002)**

Conversions

Conversions Part 1

Format	Color
Hex	DFD1C6
RGB	223, 209, 198
RGB Percent	87%, 82%, 78%
CMY	0.1255, 0.1804, 0.2235
CMYK	0.00, 0.06, 0.11, 0.13
HSL	26°, 28%, 83%
HSV	26°, 11%, 87%
XYZ	63.4249, 65.3661, 62.7002
YIQ	211.9320, 11.8750, -0.4530

Conversions

Conversions Part 2

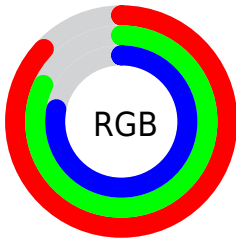
Format	Color
R _Y B	223, 218, 198
Decimal	14668230
CIE Lab	84.67, 3.00, 7.18
CIE LCh	85, 7.781, 67.342
Yxy	65.3661, 0.3312, 0.3414
Android (android.graphics.Color)	4292858310 (0xFFDFD1C6)
YUV	211.9320, -6.8685, 9.7066
Hunter-Lab	80.8493, -1.4561, 10.6140

Details

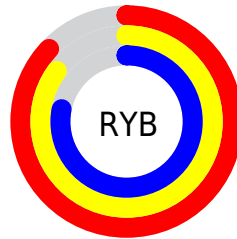
The XYZ color **63.4249, 65.3661, 62.7002** is a light color, and the websafe version is hex **CCCCCC**. A complement of this color would be **60.1513, 64.4192, 79.0764**, and the grayscale version is **62.5743, 65.8330, 71.6922**.

A 20% lighter version of the original color is **95.0500, 100.0000, 108.9000**, and **32.9038, 33.7811, 31.1717** is the 20% darker color. If you saturate the color by 10%, you get **58.0963, 58.5262, 49.1543**, and if you desaturate by 10%, it is **69.3759, 72.8433, 78.3235**.

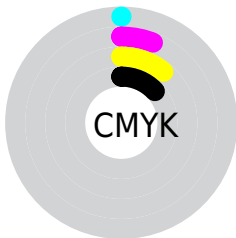
Distribution



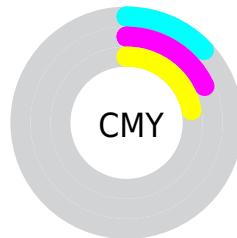
- Red (87%)
- Green (82%)
- Blue (78%)



- Red (87%)
- Yellow (85%)
- Blue (78%)



- Cyan (0%)
- Magenta (6%)
- Yellow (11%)
- Black (13%)



- Cyan (13%)
- Magenta (18%)
- Yellow (22%)

Brightness & Saturation Gradients

These gradients show how the XYZ color 63.4249, 65.3661, 62.7002 changes by changing the brightness by 10 percent. The first figure shows a shift by +10% for each color and the second figure -10%.

Similar to the brightness gradients but the following saturation gradients show a change of the XYZ color 63.4249, 65.3661, 62.7002 by changing the saturation by 10% instead.

■ 63.4249, 65.3661,
62.7002

■ 63.4249, 65.3661,
62.7002

426.7451,
444.1064, 452.5586

■ 46.4450, 47.7580,
45.1593

108.8607,
112.5760, 110.3183

■ 32.8032, 33.6353,
31.2390

138.0472,
142.9467, 141.2325

■ 22.1342, 22.6136,
20.5209

172.0333,
178.3402, 177.4416

■ 14.0727, 14.3084,
12.5865

211.1844,
219.1412, 219.3640

■ 8.2533, 8.3355,
7.0170

255.8657,
265.7339, 267.4184

■ 4.3106, 4.3104,
3.3942

306.4427,

■ 1.8793, 1.8486,

318.5027, 322.0233

1.2992

363.2807,
377.8321, 383.5972

■ 0.5648, 0.5172,
0.0612

■ 0.0000, 0.0000,
0.0000

■ 63.4249, 65.3661,
62.7002

■ 63.4249, 65.3661,
62.7002

■ 58.0963, 58.5262,
49.1543

■ 69.3759, 72.8433,
78.3235

■ 53.3628, 52.2975,
37.5931

■ 75.9647, 80.9660,
96.1033

■ 49.2028, 46.6645,
27.9227

■ 81.5771, 89.0989,
107.5060

■ 45.5911, 41.6076,
20.0401

■ 84.2417, 94.4281,
108.3942

■ 42.5008, 37.1063,
13.8325

■ 39.9017, 33.1382,
9.1738

■ 37.7602, 29.6793,
5.9197

■ 36.0370, 26.7024,
3.8981

■ 34.8141, 24.4529,
2.8850

Harmonies

Analogous

The Analogous color harmony consists of three colors that are next to each other on the color wheel.



64.8236, 65.3661, 65.5233



63.4249, 65.3661, 62.7002



61.7024, 65.3661, 62.0954

Triad

The Triadic color harmony groups three colors that are evenly spaced from another and form a triangle on the color wheel.



63.4249, 65.3661, 62.7002



58.8724, 65.3661, 72.4027



64.1778, 65.3661, 79.0566

Complementary

The Complementary color scheme is a pair of colors which are on the opposite of each other on the color wheel.



63.4249, 65.3661, 62.7002



60.1513, 64.4192, 79.0764

Split Complementary

Split-complementary colors differ from the complementary color scheme. The scheme consists of three colors, the original color and two neighbors of the complement color.



62.5566, 65.3661, 81.0939



63.4249, 65.3661, 62.7002



59.5092, 65.3661, 77.1376

Square

The Square scheme is like the rectangle color scheme, but the four colors are evenly spaced on the color wheel.



63.4249, 65.3661, 62.7002



59.0951, 65.3661, 67.5487



60.8499, 65.3661, 80.3757



65.2640, 65.3661, 74.9238

Rectangle

The Rectangle color scheme consists of four colors that form a rectangle on the color wheel.



63.4249, 65.3661, 62.7002



60.6061, 65.3661, 63.0045



60.8499, 65.3661, 80.3757



63.6762, 65.3661, 80.0177

Sweetspot

The Sweet Spot groups the original color and five complimentary colors.



63.4267, 65.3690, 62.7016



92.4915, 96.8149, 102.0914



62.5310, 60.8390, 70.8458



19.6535, 20.5431, 21.4719



0.0000, 0.0000, 0.0000



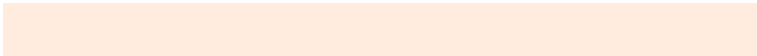
20.3446, 21.4041, 23.3091

Same Dimension

The Same Dimension uses a secret algorithm to generate beautiful new colors.



63.4267, 65.3690, 62.7016



84.5274, 86.7713, 81.2954



66.5697, 71.6550, 63.7493



14.2012, 14.6884, 14.3934



20.5785, 14.5948, 1.7325



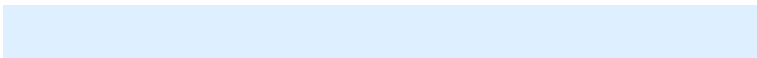
1.5145, 1.1878, 0.1494

Inverse Universe

The Inverse Universe completely reimagines the original color for something new.



60.1513, 64.4192, 79.0764



79.4088, 85.2869, 106.8845



57.1860, 58.4888, 78.0880



13.5854, 14.5098, 17.4723



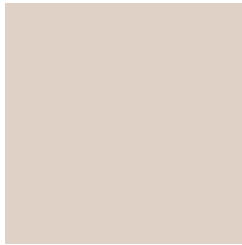
12.2464, 11.9624, 42.7119



0.9376, 1.0067, 2.9901

Previews

White Background



This preview shows how the XYZ color 63.4249, 65.3661, 62.7002 looks on a white background.

Color Contrast Check

Large Text (above 18pt) WCAG AA × Fail

Any Text WCAG AA × Fail

Large Text (above 18pt) WCAG AAA × Fail

Any Text WCAG AAA × Fail

Black Background



This preview shows how the XYZ color 63.4249, 65.3661, 62.7002 looks on a black background.

Color Contrast Check

Large Text (above 18pt) WCAG AA ✓ Pass

Any Text WCAG AA ✓ Pass

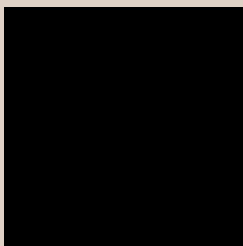
Large Text (above 18pt) WCAG AAA ✓ Pass

Any Text WCAG AAA ✓ Pass

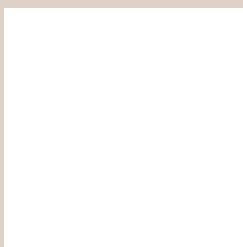
If you want to check with other color combinations, try the [Color Contrast Checker](#).

XYZ 63.4249, 65.3661, 62.7002

Background



This preview shows how black text looks on a background with the XYZ color 63.4249, 65.3661, 62.7002.



This preview shows how white text looks on a background with the XYZ color 63.4249, 65.3661,

Color Blindness Simulation

Color vision deficiency is a very complex topic, and I could not describe the different causes any better than Wikipedia does, so if you want to learn more, you should check out their [article about color blindness](#).

Dichromacy



Original Color

63.4249, 65.3661, 62.7002

Protanopia

62.5165, 65.6175, 63.4033

Deuteranopia

66.4937, 65.1421, 63.1019



Tritanopia

66.3802, 65.1053, 78.1752

Trichromacy



Original Color

63.4249, 65.3661, 62.7002

Protanomaly

62.8706, 65.4324, 63.3489

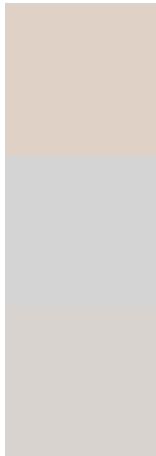
Deuteranomaly

65.3351, 65.2551, 63.1848

Tritanomaly

65.1329, 64.9543, 72.0553

Monochromacy



Original Color

63.4249, 65.3661, 62.7002

Achromatopsia

62.5785, 65.8375, 71.6970

Achromatomaly

62.8757, 65.6925, 68.3975

CSS Examples

Text

The CSS property to change the color of the text to XYZ 63.4249, 65.3661, 62.7002 is called "color". The color property can be set on classes, ids or directly on the HTML element.

This example shows how text in the color `rgb(223, 209, 198)` looks like.

```
.text, #text, p{  
    color:rgb(223, 209, 198)  
}
```

If you want to add a text shadow in that color use the text-shadow property, you can generate a text shadow directly with our [CSS Text Shadow Generator](#).

Here you see how black text with a 4 pixel rgb(223, 209, 198) colored shadow looks like.

```
.shadow{ text-shadow: 4px 4px 2px rgb(223, 209, 198) }
```

Border

The CSS property to change the border of an element to XYZ 63.4249, 65.3661, 62.7002 is called "border". The border property can be set on classes, ids or directly on the HTML element.

This example shows the color as border, it can be applied via the CSS property "border" or "border-color".

```
.border, #border, table{ border:4px solid rgb(223, 209, 198) }
```


If only the border color should be changed use the property `border-color`.

```
.border{ border-color:rgb(223, 209, 198) }
```

If you want to add a box shadow in that color use:

Here you see how a box with a 4 pixel `rgb(223, 209, 198)` colored shadow looks like.

```
.boxshadow{ -moz-box-shadow:4px 4px 4px  
4px rgb(223, 209, 198); -webkit-box-  
shadow:4px 4px 4px 4px rgb(223, 209, 198);  
box-shadow:4px 4px 4px 4px rgb(223, 209,  
198) }
```

Background

The CSS property to change the background color of an element to XYZ 63.4249, 65.3661, 62.7002 is called "background". The background property can be set on classes, ids or directly on the HTML element.

```
.background, #background, body{  
background: rgb(223, 209, 198) }
```

If only the background color should be changed can be used:

```
.background{ background-color: rgb(223,  
209, 198) }
```

This example shows the color as background, it is applied via the CSS property "background".

To optimize and compress your CSS code, you can use our [online CSS compressor and optimizer](#) based on csstidy. If you want to create a linear or radial gradient as background or border, check our [CSS Gradient Generator](#).

Hey! You found this booklet interesting? Support Converting Colors with the new Membership Option!

The pro membership hides all ads, plus gives you double the colors in the color bucket, and more awesome pro features!

[Learn more, Memberships starting at \\$2.50/m!](#)

**Follow me
on Twitter!**

@ConvertingColor