

Converting Colors

XYZ(63.5432, 62.9568, 72.6058)

Have a look what the booklet for
XYZ(63.5432, 62.9568, 72.6058)
contains.

XYZ(63.6177, 63.0965, 72.4442)	3
<i>Conversions</i>	4
<i>Details</i>	6
<i>Harmonies</i>	12
<i>Previews</i>	24
<i>Color Blindness Simulation</i>	28
<i>CSS Examples</i>	31

Color

**XYZ(63.6177, 63.0965,
72.4442)**

Conversions

Conversions Part 1

Format	Color
Hex	DECBD6
RGB	222, 203, 214
RGB Percent	87%, 80%, 84%
CMY	0.1294, 0.2039, 0.1608
CMYK	0.00, 0.09, 0.04, 0.13
HSL	325°, 22%, 83%
HSV	325°, 9%, 87%
XYZ	63.6177, 63.0965, 72.4442
YIQ	209.9350, 7.7930, 7.4490

Conversions

Conversions Part 2

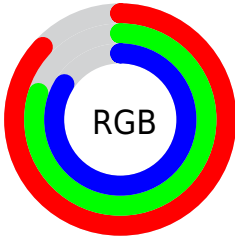
Format	Color
R _Y B	222, 203, 214
Decimal	14601174
CIE Lab	83.49, 8.52, -3.06
CIE LCh	83, 9.054, 340.245
Yxy	63.0965, 0.3194, 0.3168
Android (android.graphics.Color)	4292791254 (0xFFDECBD6)
YUV	209.9350, 2.0040, 10.5810
Hunter-Lab	79.4333, 3.9514, 1.5301

Details

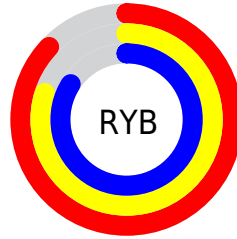
The XYZ color **63.6177, 63.0965, 72.4442** is a light color, and the websafe version is hex **CCCCCC**. A complement of this color would be **62.5101, 69.6438, 71.7792**, and the grayscale version is **61.2011, 64.3883, 70.1189**.

A 20% lighter version of the original color is **95.0500, 100.0000, 108.9000**, and **32.9418, 32.2136, 37.2825** is the 20% darker color. If you saturate the color by 10%, you get **57.5863, 52.8893, 64.7114**, and if you desaturate by 10%, it is **70.4719, 74.8380, 80.7910**.

Distribution



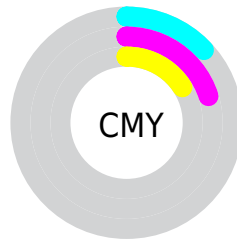
- Red (87%)
- Green (80%)
- Blue (84%)



- Red (87%)
- Yellow (80%)
- Blue (84%)



- Cyan (0%)
- Magenta (9%)
- Yellow (4%)
- Black (13%)



- Cyan (13%)
- Magenta (20%)
- Yellow (16%)

Brightness & Saturation Gradients

These gradients show how the XYZ color 63.6177, 63.0965, 72.4442 changes by changing the brightness by 10 percent. The first figure shows a shift by +10% for each color and the second figure -10%.

Similar to the brightness gradients but the following saturation gradients show a change of the XYZ color 63.6177, 63.0965, 72.4442 by changing the saturation by 10% instead.

63.6177, 63.0965,
72.4442

63.6177, 63.0965,
72.4442

427.4319,
435.9196, 488.1053

46.6016, 45.9193,
53.0326

109.1370,
109.3087, 124.4014

32.9275, 32.1821,
37.4409

138.3709,
139.1125, 157.7841

22.2299, 21.5006,
25.2506

172.4082,
173.8939, 196.6609

14.1434, 13.4904,
16.0431

211.6141,
214.0374, 241.4504

8.3029, 7.7671,
9.4000

256.3541,
259.9273, 292.5710

4.3428, 3.9463,
4.9026

306.9935,

1.8978, 1.6436,

311.9481, 350.4413

2.1325

363.8977,
370.4840, 415.4799

■ 0.5756, 0.3867,
0.6350

■ 0.0000, 0.0000,
0.0000

■ 63.6177, 63.0965,
72.4442

■ 63.6177, 63.0965,
72.4442

■ 57.5863, 52.8893,
64.7114

■ 70.4719, 74.8380,
80.7910

■ 52.3395, 44.1443,
57.5718

■ 78.1745, 88.1656,
89.7634

■ 47.8439, 36.7956,
51.0095

■ 81.9189, 93.4635,
97.7654

■ 44.0615, 30.7693,
45.0057

■ 83.3599, 94.0399,
105.3538

■ 40.9509, 25.9844,
39.5406

■ 83.9345, 94.2698,
108.3798

■ 38.4660, 22.3511,
34.5926

■ 36.5550, 19.7673,
30.1379

■ 35.1564, 18.1126,
26.1493

■ 34.1792, 17.2073,
22.5897

Harmonies

Analogous

The Analogous color harmony consists of three colors that are next to each other on the color wheel.



62.4590, 63.0965, 77.3437



63.6177, 63.0965, 72.4442



63.7874, 63.0965, 66.7846

Triad

The Triadic color harmony groups three colors that are evenly spaced from another and form a triangle on the color wheel.



63.6177, 63.0965, 72.4442



59.2983, 63.0965, 58.5428



57.1185, 63.0965, 75.9718

Complementary

The Complementary color scheme is a pair of colors which are on the opposite of each other on the color wheel.



63.6177, 63.0965, 72.4442



62.5101, 69.6438, 71.7792

Split Complementary

Split-complementary colors differ from the complementary color scheme. The scheme consists of three colors, the original color and two neighbors of the complement color.



56.3106, 63.0965, 70.6544



63.6177, 63.0965, 72.4442



57.5507, 63.0965, 60.7281

Square

The Square scheme is like the rectangle color scheme, but the four colors are evenly spaced on the color wheel.



63.6177, 63.0965, 72.4442



61.2644, 63.0965, 58.9634



56.4670, 63.0965, 65.0897



58.6966, 63.0965, 79.4565

Rectangle

The Rectangle color scheme consists of four colors that form a rectangle on the color wheel.



63.6177, 63.0965, 72.4442



63.3129, 63.0965, 63.3663



56.4670, 63.0965, 65.0897



56.7494, 63.0965, 74.3278

Sweetspot

The Sweet Spot groups the original color and five complimentary colors.



63.6195, 63.0992, 72.4456



92.1435, 95.0100, 105.3937



61.3833, 61.8254, 77.8063



19.5600, 20.0577, 22.3608



0.0000, 0.0000, 0.0000



20.3446, 21.4041, 23.3091

Same Dimension

The Same Dimension uses a secret algorithm to generate beautiful new colors.



63.6195, 63.0992, 72.4456



85.7667, 84.1233, 97.5131



62.4515, 62.6320, 66.2950



14.0382, 13.8329, 15.9714



20.2842, 10.1807, 13.4281



1.4504, 0.7234, 1.1647

Inverse Universe

The Inverse Universe completely reimagines the original color for something new.



63.6195, 63.0992, 72.4456



85.7667, 84.1233, 97.5131



63.7253, 70.1299, 78.1786



14.0382, 13.8329, 15.9714



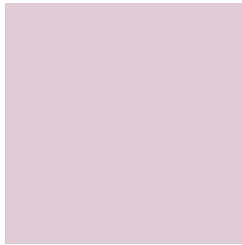
20.2842, 10.1807, 13.4281



1.4504, 0.7234, 1.1647

Previews

White Background



This preview shows how the XYZ color 63.6177, 63.0965, 72.4442 looks on a white background.

Color Contrast Check

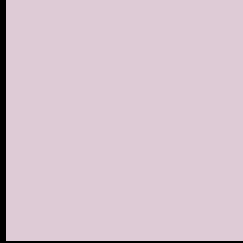
Large Text (above 18pt) WCAG AA × Fail

Any Text WCAG AA × Fail

Large Text (above 18pt) WCAG AAA × Fail

Any Text WCAG AAA × Fail

Black Background



This preview shows how the XYZ color 63.6177, 63.0965, 72.4442 looks on a black background.

Color Contrast Check

Large Text (above 18pt) WCAG AA ✓ Pass

Any Text WCAG AA ✓ Pass

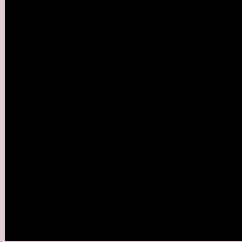
Large Text (above 18pt) WCAG AAA ✓ Pass

Any Text WCAG AAA ✓ Pass

If you want to check with other color combinations, try the [Color Contrast Checker](#).

XYZ 63.6177, 63.0965, 72.4442

Background



This preview shows how black text looks on a background with the XYZ color 63.6177, 63.0965, 72.4442.



This preview shows how white text looks on a background with the XYZ color 63.6177, 63.0965,

Color Blindness Simulation

Color vision deficiency is a very complex topic, and I could not describe the different causes any better than Wikipedia does, so if you want to learn more, you should check out their [article about color blindness](#).

Dichromacy



Original Color

63.6177, 63.0965, 72.4442

Protanopia

61.0020, 63.1388, 73.9376

Deuteranopia

64.3095, 63.1037, 72.4091



Tritanopia

64.2068, 62.9910, 75.1041

Trichromacy



Original Color

63.6177, 63.0965, 72.4442

Protanomaly

62.0686, 63.3451, 73.2454

Deuteranomaly

63.9986, 62.9434, 72.3945

Tritanomaly

64.0763, 62.9388, 74.4169

Monochromacy



Original Color

63.6177, 63.0965, 72.4442

Achromatopsia

61.2578, 64.4480, 70.1838

Achromatomaly

61.8023, 63.6249, 70.6515

CSS Examples

Text

The CSS property to change the color of the text to XYZ 63.6177, 63.0965, 72.4442 is called "color". The color property can be set on classes, ids or directly on the HTML element.

This example shows how text in the color rgb(222, 203, 214) looks like.

```
.text, #text, p{  
    color:rgb(222, 203, 214)  
}
```

If you want to add a text shadow in that color use the text-shadow property, you can generate a text shadow directly with our [CSS Text Shadow Generator](#).

Here you see how black text with a 4 pixel rgb(222, 203, 214) colored shadow looks like.

```
.shadow{ text-shadow: 4px 4px 2px rgb(222, 203, 214) }
```

Border

The CSS property to change the border of an element to XYZ 63.6177, 63.0965, 72.4442 is called "border". The border property can be set on classes, ids or directly on the HTML element.

This example shows the color as border, it can be applied via the CSS property "border" or "border-color".

```
.border, #border, table{ border:4px solid rgb(222, 203, 214) }
```


If only the border color should be changed use the property border-color.

```
.border{ border-color:rgb(222, 203, 214) }
```

If you want to add a box shadow in that color use:

Here you see how a box with a 4 pixel rgb(222, 203, 214) colored shadow looks like.

```
.boxshadow{ -moz-box-shadow:4px 4px 4px  
4px rgb(222, 203, 214); -webkit-box-  
shadow:4px 4px 4px 4px rgb(222, 203, 214);  
box-shadow:4px 4px 4px 4px rgb(222, 203,  
214) }
```

Background

The CSS property to change the background color of an element to XYZ 63.6177, 63.0965, 72.4442 is called "background". The background property can be set on classes, ids or directly on the HTML element.

```
.background, #background, body{  
background: rgb(222, 203, 214) }
```

If only the background color should be changed can be used:

```
.background{ background-color: rgb(222,  
203, 214) }
```

This example shows the color as background, it is applied via the CSS property "background".

To optimize and compress your CSS code, you can use our [online CSS compressor and optimizer](#) based on csstidy. If you want to create a linear or radial gradient as background or border, check our [CSS Gradient Generator](#).

Hey! You found this booklet interesting? Support Converting Colors with the new Membership Option!

The pro membership hides all ads, plus gives you double the colors in the color bucket, and more awesome pro features!

[Learn more, Memberships starting at \\$2.50/m!](#)

**Follow me
on Twitter!**

@ConvertingColor