

# Converting Colors

XYZ(63.5988, 61.7239, 61.4913)

Have a look what the booklet for  
XYZ(63.5988, 61.7239, 61.4913)  
contains.

<b>XYZ(63.5508, 61.5752, 61.3590)</b> .....	3
<b><i>Conversions</i></b> .....	4
<b><i>Details</i></b> .....	6
<b><i>Harmonies</i></b> .....	12
<b><i>Previews</i></b> .....	24
<b><i>Color Blindness Simulation</i></b> .....	28
<b><i>CSS Examples</i></b> .....	31

# Color

**XYZ(63.5508, 61.5752,  
61.3590)**

# Conversions

## Conversions Part 1

<b>Format</b>	<b>Color</b>
Hex	E8C6C5
RGB	232, 198, 197
RGB Percent	91%, 78%, 77%
CMY	0.0902, 0.2235, 0.2274
CMYK	0.00, 0.15, 0.15, 0.09
HSL	2°, 43%, 84%
HSV	2°, 15%, 91%
XYZ	63.5508, 61.5752, 61.3590
YIQ	208.0520, 20.5850, 6.8970

# Conversions

## Conversions Part 2

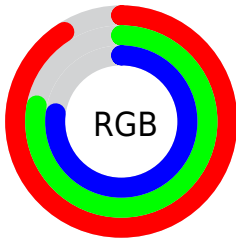
<b>Format</b>	<b>Color</b>
R <sub>Y</sub> B	232, 198, 197
Decimal	15255237
CIE Lab	82.69, 11.84, 4.95
CIE LCh	83, 12.836, 22.696
Yxy	61.5752, 0.3408, 0.3302
Android (android.graphics.Color)	4293445317 (0xFFE8C6C5)
YUV	208.0520, -5.4486, 21.0024
Hunter-Lab	78.4699, 7.2405, 8.5675

# Details

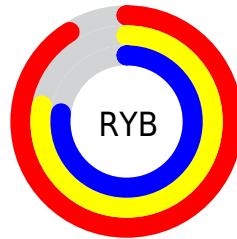
The XYZ color **63.5508, 61.5752, 61.3590** is a light color, and the websafe version is hex **FFCCCC**. A complement of this color would be **66.1668, 74.8465, 87.3039**, and the grayscale version is **60.0142, 63.1396, 68.7590**.

A 20% lighter version of the original color is **94.8894, 99.9358, 108.0543**, and **32.8357, 31.1598, 30.2704** is the 20% darker color. If you saturate the color by 10%, you get **56.3214, 51.0479, 46.8277**, and if you desaturate by 10%, it is **71.9590, 73.8042, 78.3031**.

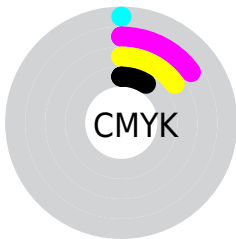
# Distribution



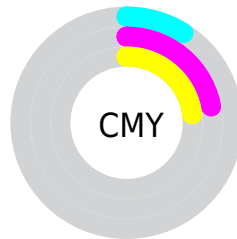
- Red (91%)
- Green (78%)
- Blue (77%)



- Red (91%)
- Yellow (78%)
- Blue (77%)



- Cyan (0%)
- Magenta (15%)
- Yellow (15%)
- Black (9%)



- Cyan (9%)
- Magenta (22%)
- Yellow (23%)

# Brightness & Saturation Gradients

These gradients show how the XYZ color 63.5508, 61.5752, 61.3590 changes by changing the brightness by 10 percent. The first figure shows a shift by +10% for each color and the second figure -10%.

Similar to the brightness gradients but the following saturation gradients show a change of the XYZ color 63.5508, 61.5752, 61.3590 by changing the saturation by 10% instead.



63.5508, 61.5752,  
61.3590

63.5508, 61.5752,  
61.3590

427.1937,  
430.3799, 447.5320

46.5473, 44.6895,  
44.0825

109.0411,  
107.1113, 108.3612

32.8843, 31.2130,  
30.3977

138.2586,  
136.5306, 138.9239

22.1967, 20.7611,  
19.8861

172.2781,  
170.8965, 174.7525

14.1189, 12.9495,  
12.1290

211.4650,  
210.5935, 216.2655

8.2857, 7.3938,  
6.7080

256.1847,  
256.0059, 263.8814

4.3316, 3.7095,  
3.2045

306.8025,

1.8914, 1.5125,

307.5182, 318.0188

1.2000

363.6837,  
365.5147, 379.0961

■ 0.5718, 0.2975,  
0.0000

■ 0.0000, 0.0000,  
0.0000

■ 63.5508, 61.5752,  
61.3590

■ 63.5508, 61.5752,  
61.3590

■ 56.3214, 51.0479,  
46.8277

■ 71.9590, 73.8042,  
78.3031

■ 50.2134, 42.1392,  
34.5958

■ 81.5901, 87.7969,  
97.7585

■ 45.1722, 34.7713,  
24.5467

■ 87.0889, 95.8959,  
108.5274

■ 41.1365, 28.8569,  
16.5521

■ 38.0390, 24.2997,  
10.4702

■ 35.8040, 20.9923,  
6.1413

■ 34.3442, 18.8104,  
3.3799

■ 33.5536, 17.6050,  
1.9585

■ 33.3512, 17.3004,  
1.5815

# Harmonies

## Analogous

The Analogous color harmony consists of three colors that are next to each other on the color wheel.



63.9396, 61.5752, 68.9927



63.5508, 61.5752, 61.3590



61.7955, 61.5752, 55.6849

# Triad

The Triadic color harmony groups three colors that are evenly spaced from another and form a triangle on the color wheel.



63.5508, 61.5752, 61.3590



54.4113, 61.5752, 58.2628



57.8543, 61.5752, 83.2502

# Complementary

The Complementary color scheme is a pair of colors which are on the opposite of each other on the color wheel.



63.5508, 61.5752, 61.3590



66.1668, 74.8465, 87.3039

# Split Complementary

Split-complementary colors differ from the complementary color scheme. The scheme consists of three colors, the original color and two neighbors of the complement color.



55.3727, 61.5752, 79.8536



63.5508, 61.5752, 61.3590



53.4258, 61.5752, 65.1341

# Square

The Square scheme is like the rectangle color scheme, but the four colors are evenly spaced on the color wheel.



63.5508, 61.5752, 61.3590



56.5048, 61.5752, 53.9976



53.7721, 61.5752, 73.0717



60.5936, 61.5752, 82.0409



# Rectangle

The Rectangle color scheme consists of four colors that form a rectangle on the color wheel.



63.5508, 61.5752, 61.3590



60.1155, 61.5752, 53.5761



53.7721, 61.5752, 73.0717



56.9635, 61.5752, 82.6007

# Sweetspot

The Sweet Spot groups the original color and five complimentary colors.



63.5525, 61.5780, 61.3603



89.2403, 91.5573, 97.1703



67.7283, 62.8822, 84.4785



18.9330, 19.3526, 20.4592



0.0000, 0.0000, 0.0000



20.3446, 21.4041, 23.3091



# Same Dimension

The Same Dimension uses a secret algorithm to generate beautiful new colors.



63.5525, 61.5780, 61.3603



75.9107, 72.1678, 70.3154



67.6790, 69.8310, 62.7358



14.4100, 14.4339, 14.9310



18.5306, 9.6354, 0.8831



1.3811, 0.7356, 0.0692



# Inverse Universe

The Inverse Universe completely reimagines the original color for something new.



66.1668, 74.8465, 87.3039



79.7140, 91.4724, 108.0623



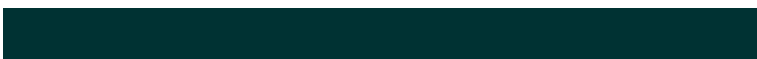
61.6176, 65.7482, 85.7875



14.7701, 16.2617, 18.5047



23.1023, 33.2667, 47.5867

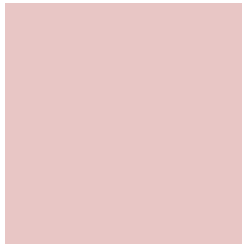


1.7184, 2.4808, 3.5202



# Previews

## White Background



This preview shows how the XYZ color 63.5508, 61.5752, 61.3590 looks on a white background.

## Color Contrast Check

Large Text (above 18pt) WCAG AA × Fail

Any Text WCAG AA × Fail

Large Text (above 18pt) WCAG AAA × Fail

Any Text WCAG AAA × Fail



# Black Background



This preview shows how the XYZ color 63.5508, 61.5752, 61.3590 looks on a black background.

## Color Contrast Check

Large Text (above 18pt) WCAG AA ✓ Pass

Any Text WCAG AA ✓ Pass

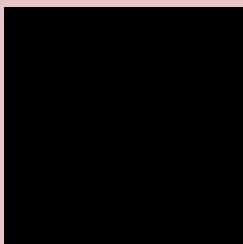
Large Text (above 18pt) WCAG AAA ✓ Pass

Any Text WCAG AAA ✓ Pass

If you want to check with other color combinations, try the [Color Contrast Checker](#).

# XYZ 63.5508, 61.5752, 61.3590

## Background



This preview shows how black text looks on a background with the XYZ color 63.5508, 61.5752, 61.3590.



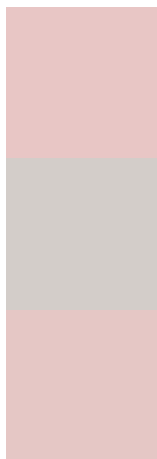
This preview shows how white text looks on a background with the XYZ color 63.5508, 61.5752,



# Color Blindness Simulation

Color vision deficiency is a very complex topic, and I could not describe the different causes any better than Wikipedia does, so if you want to learn more, you should check out their [article about color blindness](#).

## Dichromacy



### Original Color

63.5508, 61.5752, 61.3590

### Protanopia

59.2379, 61.7286, 64.0510

### Deuteranopia

62.8146, 61.5361, 61.3903



## Tritanopia

65.4295, 61.6754, 70.0841

# Trichromacy



## Original Color

63.5508, 61.5752, 61.3590

## Protanomaly

60.7593, 61.4713, 63.3064

## Deuteranomaly

63.1346, 61.7011, 61.4053

## Tritanomaly

64.7111, 61.7124, 66.8936

# Monochromacy



## Original Color

63.5508, 61.5752, 61.3590

## Achromatopsia

59.9535, 63.0757, 68.6895

## Achromatomaly

61.1072, 62.2971, 65.9306

# CSS Examples

## Text

The CSS property to change the color of the text to XYZ 63.5508, 61.5752, 61.3590 is called "color". The color property can be set on classes, ids or directly on the HTML element.

This example shows how text in the color rgb(232, 198, 197) looks like.

```
.text, #text, p{  
    color:rgb(232, 198, 197)  
}
```

If you want to add a text shadow in that color use the text-shadow property, you can generate a text shadow directly with our [CSS Text Shadow Generator](#).

Here you see how black text with a 4 pixel rgb(232, 198, 197) colored shadow looks like.

```
.shadow{ text-shadow: 4px 4px 2px rgb(232, 198, 197) }
```

## Border

The CSS property to change the border of an element to XYZ 63.5508, 61.5752, 61.3590 is called "border". The border property can be set on classes, ids or directly on the HTML element.

This example shows the color as border, it can be applied via the CSS property "border" or "border-color".

```
.border, #border, table{ border:4px solid rgb(232, 198, 197) }
```



If only the border color should be changed use the property `border-color`.

```
.border{ border-color:rgb(232, 198, 197) }
```

If you want to add a box shadow in that color use:

Here you see how a box with a 4 pixel `rgb(232, 198, 197)` colored shadow looks like.

```
.boxshadow{ -moz-box-shadow:4px 4px 4px  
4px rgb(232, 198, 197); -webkit-box-  
shadow:4px 4px 4px 4px rgb(232, 198, 197);  
box-shadow:4px 4px 4px 4px rgb(232, 198,  
197) }
```

# Background

The CSS property to change the background color of an element to XYZ 63.5508, 61.5752, 61.3590 is called "background". The background property can be set on classes, ids or directly on the HTML element.

```
.background, #background, body{  
background: rgb(232, 198, 197) }
```

If only the background color should be changed can be used:

```
.background{ background-color: rgb(232,  
198, 197) }
```

This example shows the color as background, it is applied via the CSS property "background".

To optimize and compress your CSS code, you can use our [online CSS compressor and optimizer](#) based on csstidy. If you want to create a linear or radial gradient as background or border, check our [CSS Gradient Generator](#).

Hey! You found this booklet interesting? Support Converting Colors with the new Membership Option!

The pro membership hides all ads, plus gives you double the colors in the color bucket, and more awesome pro features!

**[Learn more, Memberships starting at \\$2.50/m!](#)**

**Follow me  
on Twitter!**

@ConvertingColor