

Converting Colors

XYZ(63.6225, 62.0484, 68.2244)

Have a look what the booklet for
XYZ(63.6225, 62.0484, 68.2244)
contains.

XYZ(63.7180, 62.1935, 68.3208)	3
<i>Conversions</i>	4
<i>Details</i>	6
<i>Harmonies</i>	12
<i>Previews</i>	24
<i>Color Blindness Simulation</i>	28
<i>CSS Examples</i>	31

Color

**XYZ(63.7180, 62.1935,
68.3208)**

Conversions

Conversions Part 1

Format	Color
Hex	E3C8D0
RGB	227, 200, 208
RGB Percent	89%, 78%, 82%
CMY	0.1098, 0.2157, 0.1843
CMYK	0.00, 0.12, 0.08, 0.11
HSL	342°, 33%, 84%
HSV	342°, 12%, 89%
XYZ	63.7180, 62.1935, 68.3208
YIQ	208.9850, 13.5240, 8.2120

Conversions

Conversions Part 2

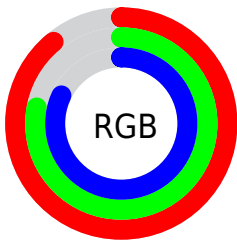
Format	Color
R _Y B	227, 200, 208
Decimal	14928080
CIE Lab	83.02, 10.81, -0.50
CIE LCh	83, 10.818, 357.325
Yxy	62.1935, 0.3281, 0.3202
Android (android.graphics.Color)	4293118160 (0xFFE3C8D0)
YUV	208.9850, -0.4856, 15.7992
Hunter-Lab	78.8629, 6.2108, 3.8396

Details

The XYZ color **63.7180, 62.1935, 68.3208** is a light color, and the websafe version is hex **FFCCCC**. A complement of this color would be **64.0771, 72.3336, 77.6058**, and the grayscale version is **60.5929, 63.7485, 69.4221**.

A 20% lighter version of the original color is **95.0500, 100.0000, 108.9000**, and **32.9062, 31.5488, 34.9270** is the 20% darker color. If you saturate the color by 10%, you get **56.9786, 51.7030, 56.8603**, and if you desaturate by 10%, it is **71.4395, 74.3298, 81.0871**.

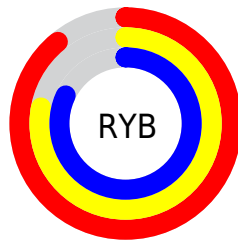
Distribution



Red (89%)

Green (78%)

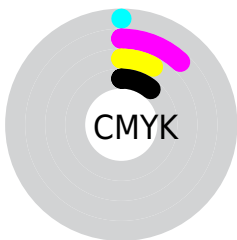
Blue (82%)



Red (89%)

Yellow (78%)

Blue (82%)

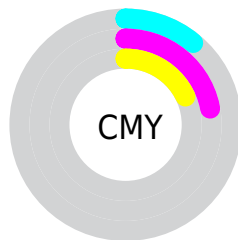


Cyan (0%)

Magenta (12%)

Yellow (8%)

Black (11%)



Cyan (11%)

Magenta (22%)

Yellow (18%)

Brightness & Saturation Gradients

These gradients show how the XYZ color 63.7180, 62.1935, 68.3208 changes by changing the brightness by 10 percent. The first figure shows a shift by +10% for each color and the second figure -10%.

Similar to the brightness gradients but the following saturation gradients show a change of the XYZ color 63.7180, 62.1935, 68.3208 by changing the saturation by 10% instead.

63.7180, 62.1935,
68.3208

63.7180, 62.1935,
68.3208

427.7890,
432.6366, 473.2607

46.6831, 45.1891,
49.6904

109.2807,
108.0051, 118.4695

32.9921, 31.6064,
34.7980

138.5393,
137.5811, 150.8249

22.2796, 21.0610,
23.2250

172.6031,
172.1165, 188.5925

14.1803, 13.1686,
14.5529

211.8376,
211.9955, 232.1907

8.3287, 7.5448,
8.3631

256.6081,
257.6026, 282.0380

4.3595, 3.8051,
4.2371

307.2799,

1.9075, 1.5651,

309.3222, 338.5531

1.7563

364.2184,
367.5388, 402.1545

■ 0.5812, 0.3339,
0.3989

■ 0.0000, 0.0000,
0.0000

■ 63.7180, 62.1935,
68.3208

■ 63.7180, 62.1935,
68.3208

■ 56.9786, 51.7030,
56.8603

■ 71.4395, 74.3298,
81.0871

■ 51.1759, 42.7791,
46.6595

■ 80.1755, 88.1701,
95.1952

■ 46.2688, 35.3484,
37.6752

■ 85.4889, 95.0711,
108.4525

■ 42.2108, 29.3287,
29.8603

■ 38.9513, 24.6292,
23.1643

■ 36.4339, 21.1489,
17.5330

■ 34.5945, 18.7718,
12.9066

■ 33.3568, 17.3589,
9.2189

■ 32.6992, 16.7392,
6.8552

Harmonies

Analogous

The Analogous color harmony consists of three colors that are next to each other on the color wheel.



62.9782, 62.1935, 74.9089



63.7180, 62.1935, 68.3208



63.1973, 62.1935, 61.9788

Triad

The Triadic color harmony groups three colors that are evenly spaced from another and form a triangle on the color wheel.



63.7180, 62.1935, 68.3208



57.0735, 62.1935, 56.9126



56.7193, 62.1935, 79.1430

Complementary

The Complementary color scheme is a pair of colors which are on the opposite of each other on the color wheel.



63.7180, 62.1935, 68.3208



64.0771, 72.3336, 77.6058

Split Complementary

Split-complementary colors differ from the complementary color scheme. The scheme consists of three colors, the original color and two neighbors of the complement color.



55.2087, 62.1935, 73.8013



63.7180, 62.1935, 68.3208



55.4094, 62.1935, 61.0029

Square

The Square scheme is like the rectangle color scheme, but the four colors are evenly spaced on the color wheel.



63.7180, 62.1935, 68.3208



59.3231, 62.1935, 55.6552



54.7355, 62.1935, 67.1191



58.9035, 62.1935, 81.4092

Rectangle

The Rectangle color scheme consists of four colors that form a rectangle on the color wheel.



63.7180, 62.1935, 68.3208



62.2127, 62.1935, 58.6873



54.7355, 62.1935, 67.1191



56.1181, 62.1935, 77.6310

Sweetspot

The Sweet Spot groups the original color and five complimentary colors.



63.7198, 62.1962, 68.3221



90.7475, 93.2101, 101.8700



63.7048, 61.9021, 81.2645



19.2556, 19.6861, 21.5282



0.0000, 0.0000, 0.0000



20.3446, 21.4041, 23.3091

Same Dimension

The Same Dimension uses a secret algorithm to generate beautiful new colors.



63.7198, 62.1962, 68.3221



80.9151, 77.7858, 85.5199



64.0331, 64.3579, 63.6943



14.5518, 14.4379, 15.8400



19.1147, 9.7801, 4.2330



1.4522, 0.7386, 0.5219

Inverse Universe

The Inverse Universe completely reimagines the original color for something new.



63.7198, 62.1962, 68.3221



80.9151, 77.7858, 85.5199



63.7018, 69.8576, 82.8003



14.5518, 14.4379, 15.8400



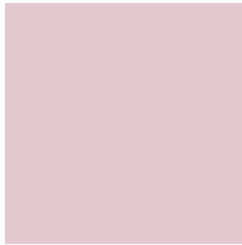
19.1147, 9.7801, 4.2330



1.4522, 0.7386, 0.5219

Previews

White Background



This preview shows how the XYZ color 63.7180, 62.1935, 68.3208 looks on a white background.

Color Contrast Check

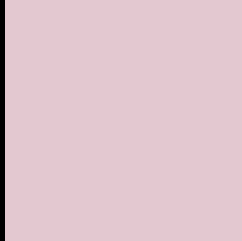
Large Text (above 18pt) WCAG AA × Fail

Any Text WCAG AA × Fail

Large Text (above 18pt) WCAG AAA × Fail

Any Text WCAG AAA × Fail

Black Background



This preview shows how the XYZ color 63.7180, 62.1935, 68.3208 looks on a black background.

Color Contrast Check

Large Text (above 18pt) WCAG AA ✓ Pass

Any Text WCAG AA ✓ Pass

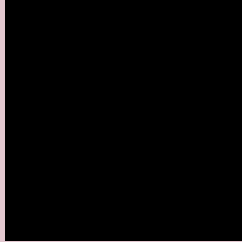
Large Text (above 18pt) WCAG AAA ✓ Pass

Any Text WCAG AAA ✓ Pass

If you want to check with other color combinations, try the [Color Contrast Checker](#).

XYZ 63.7180, 62.1935, 68.3208

Background



This preview shows how black text looks on a background with the XYZ color 63.7180, 62.1935, 68.3208.



This preview shows how white text looks on a background with the XYZ color 63.7180, 62.1935,

Color Blindness Simulation

Color vision deficiency is a very complex topic, and I could not describe the different causes any better than Wikipedia does, so if you want to learn more, you should check out their [article about color blindness](#).

Dichromacy



Original Color

63.7180, 62.1935, 68.3208

Protanopia

60.1237, 62.4011, 70.5038

Deuteranopia

63.4035, 62.0314, 68.3060



Tritanopia

64.6841, 62.2471, 72.8957

Trichromacy



Original Color

63.7180, 62.1935, 68.3208

Protanomaly

61.5446, 62.4378, 69.7807

Deuteranomaly

63.4035, 62.0314, 68.3060

Tritanomaly

64.3020, 62.0943, 70.8837

Monochromacy



Original Color

63.7180, 62.1935, 68.3208

Achromatopsia

60.6036, 63.7597, 69.4343

Achromatomaly

61.8988, 63.3450, 69.2860

CSS Examples

Text

The CSS property to change the color of the text to XYZ 63.7180, 62.1935, 68.3208 is called "color". The color property can be set on classes, ids or directly on the HTML element.

This example shows how text in the color `rgb(227, 200, 208)` looks like.

```
.text, #text, p{  
    color:rgb(227, 200, 208)  
}
```

If you want to add a text shadow in that color use the text-shadow property, you can generate a text shadow directly with our [CSS Text Shadow Generator](#).

Here you see how black text with a 4 pixel rgb(227, 200, 208) colored shadow looks like.

```
.shadow{ text-shadow: 4px 4px 2px rgb(227, 200, 208) }
```

Border

The CSS property to change the border of an element to XYZ 63.7180, 62.1935, 68.3208 is called "border". The border property can be set on classes, ids or directly on the HTML element.

This example shows the color as border, it can be applied via the CSS property "border" or "border-color".

```
.border, #border, table{ border:4px solid rgb(227, 200, 208) }
```


If only the border color should be changed use the property `border-color`.

```
.border{ border-color:rgb(227, 200, 208) }
```

If you want to add a box shadow in that color use:

Here you see how a box with a 4 pixel `rgb(227, 200, 208)` colored shadow looks like.

```
.boxshadow{ -moz-box-shadow:4px 4px 4px  
4px rgb(227, 200, 208); -webkit-box-  
shadow:4px 4px 4px 4px rgb(227, 200, 208);  
box-shadow:4px 4px 4px 4px rgb(227, 200,  
208) }
```

Background

The CSS property to change the background color of an element to XYZ 63.7180, 62.1935, 68.3208 is called "background". The background property can be set on classes, ids or directly on the HTML element.

```
.background, #background, body{  
background: rgb(227, 200, 208) }
```

If only the background color should be changed can be used:

```
.background{ background-color: rgb(227,  
200, 208) }
```

This example shows the color as background, it is applied via the CSS property "background".

To optimize and compress your CSS code, you can use our [online CSS compressor and optimizer](#) based on csstidy. If you want to create a linear or radial gradient as background or border, check our [CSS Gradient Generator](#).

Hey! You found this booklet interesting? Support Converting Colors with the new Membership Option!

The pro membership hides all ads, plus gives you double the colors in the color bucket, and more awesome pro features!

[Learn more, Memberships starting at \\$2.50/m!](#)

**Follow me
on Twitter!**

@ConvertingColor