

Converting Colors

XYZ(63.6343, 63.5839, 62.8265)

Have a look what the booklet for
XYZ(63.6343, 63.5839, 62.8265)
contains.

XYZ(63.5802, 63.6401, 62.9656)	3
<i>Conversions</i>	4
<i>Details</i>	6
<i>Harmonies</i>	12
<i>Previews</i>	24
<i>Color Blindness Simulation</i>	28
<i>CSS Examples</i>	31

Color

**XYZ(63.5802, 63.6401,
62.9656)**

Conversions

Conversions Part 1

Format	Color
Hex	E3CCC7
RGB	227, 204, 199
RGB Percent	89%, 80%, 78%
CMY	0.1098, 0.2000, 0.2196
CMYK	0.00, 0.10, 0.12, 0.11
HSL	11°, 33%, 84%
HSV	11°, 12%, 89%
XYZ	63.5802, 63.6401, 62.9656
YIQ	210.3070, 15.3130, 3.3210

Conversions

Conversions Part 2

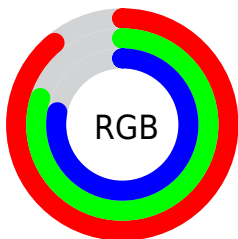
Format	Color
R_{YB}	227, 205, 199
Decimal	14929095
CIE _{Lab}	83.78, 7.21, 5.40
CIE _{LCh}	84, 9.008, 36.865
Yxy	63.6401, 0.3343, 0.3346
Android (android.graphics.Color)	4293119175 (0xFFE3CCC7)
YUV	210.3070, -5.5744, 14.6398
Hunter-Lab	79.7747, 2.6581, 9.0452

Details

The XYZ color **63.5802, 63.6401, 62.9656** is a light color, and the websafe version is hex **CCCCCC**. A complement of this color would be **63.5393, 69.9294, 82.8225**, and the grayscale version is **61.4901, 64.6924, 70.4500**.

A 20% lighter version of the original color is **95.0500, 100.0000, 108.9000**, and **32.8118, 32.5150, 31.3347** is the 20% darker color. If you saturate the color by 10%, you get **56.9700, 54.3272, 48.7144**, and if you desaturate by 10%, it is **71.1176, 74.1768, 79.4670**.

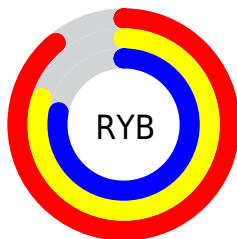
Distribution



Red (89%)

Green (80%)

Blue (78%)



Red (89%)

Yellow (80%)

Blue (78%)

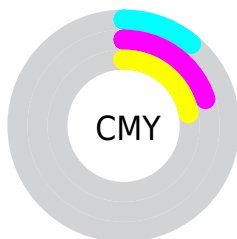


Cyan (0%)

Magenta (10%)

Yellow (12%)

Black (11%)



Cyan (11%)

Magenta (20%)

Yellow (22%)

Brightness & Saturation Gradients

These gradients show how the XYZ color 63.5802, 63.6401, 62.9656 changes by changing the brightness by 10 percent. The first figure shows a shift by +10% for each color and the second figure -10%.

Similar to the brightness gradients but the following saturation gradients show a change of the XYZ color 63.5802, 63.6401, 62.9656 by changing the saturation by 10% instead.

63.5802, 63.6401,
62.9656

63.5802, 63.6401,
62.9656

427.2984,
437.8888, 453.5491

46.5712, 46.3592,
45.3726

109.0833,
110.0925, 110.7050

32.9033, 32.5294,
31.4059

138.3080,
140.0327, 141.6884

22.2112, 21.7662,
20.6471

172.3353,
174.9616, 177.9724

14.1297, 13.6852,
12.6775

211.5306,
215.2635, 219.9754

8.2932, 7.9020,
7.0788

256.2592,
261.3228, 268.1160

4.3365, 4.0323,
3.4322

306.8864,

1.8942, 1.6917,

313.5238, 322.8129

1.3193

363.7777,
372.2510, 384.4844

■ 0.5735, 0.4183,
0.0776

■ 0.0000, 0.0000,
0.0000

■ 63.5802, 63.6401,
62.9656

■ 63.5802, 63.6401,
62.9656

■ 56.9700, 54.3272,
48.7144

■ 71.1176, 74.1768,
79.4670

■ 51.2457, 46.1854,
36.6118

■ 79.6108, 85.9707,
98.3062

■ 46.3706, 39.1706,
26.5543

■ 85.4888, 95.0710,
108.4525

■ 42.3036, 33.2327,
18.4285

■ 38.9999, 28.3178,
12.1094

■ 36.4103, 24.3673,
7.4578

■ 34.4792, 21.3163,
4.3137

■ 33.1427, 19.0918,
2.4852

■ 32.4569, 17.8872,
1.7419

Harmonies

Analogous

The Analogous color harmony consists of three colors that are next to each other on the color wheel.



64.3407, 63.6401, 68.0002



63.5802, 63.6401, 62.9656



61.9937, 63.6401, 59.7573

Triad

The Triadic color harmony groups three colors that are evenly spaced from another and form a triangle on the color wheel.



63.5802, 63.6401, 62.9656



57.0596, 63.6401, 65.1037



60.9435, 63.6401, 80.6725

Complementary

The Complementary color scheme is a pair of colors which are on the opposite of each other on the color wheel.



63.5802, 63.6401, 62.9656



63.5393, 69.9294, 82.8225

Split Complementary

Split-complementary colors differ from the complementary color scheme. The scheme consists of three colors, the original color and two neighbors of the complement color.



59.0069, 63.6401, 79.7933



63.5802, 63.6401, 62.9656



56.7922, 63.6401, 70.6026

Square

The Square scheme is like the rectangle color scheme, but the four colors are evenly spaced on the color wheel.



63.5802, 63.6401, 62.9656



58.2362, 63.6401, 60.9440



57.4977, 63.6401, 76.0312



62.7971, 63.6401, 78.3723

Rectangle

The Rectangle color scheme consists of four colors that form a rectangle on the color wheel.



63.5802, 63.6401, 62.9656



60.6961, 63.6401, 58.9823



57.4977, 63.6401, 76.0312



60.2804, 63.6401, 80.7408

Sweetspot

The Sweet Spot groups the original color and five complimentary colors.



63.5820, 63.6429, 62.9670



90.8365, 94.1315, 99.6078



65.3323, 62.4705, 77.9570



19.2780, 19.9181, 20.9579



0.0000, 0.0000, 0.0000



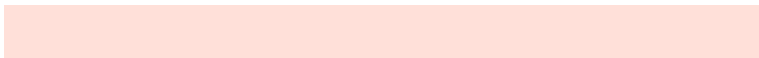
20.3446, 21.4041, 23.3091

Same Dimension

The Same Dimension uses a secret algorithm to generate beautiful new colors.



63.5820, 63.6429, 62.9670



80.2763, 79.3457, 76.5595



66.9731, 70.4253, 64.0973



14.5842, 14.7824, 14.9891



18.9889, 10.5519, 1.0359



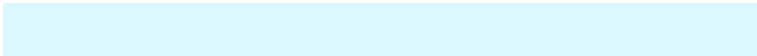
1.4642, 0.9017, 0.0969

Inverse Universe

The Inverse Universe completely reimagines the original color for something new.



63.5393, 69.9294, 82.8225



80.2089, 89.1693, 107.5917



60.0564, 62.9635, 81.6615



14.5769, 15.8752, 18.4403



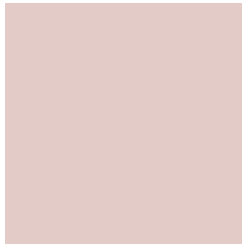
18.4578, 23.9776, 46.0385



1.4215, 1.8868, 3.4212

Previews

White Background



This preview shows how the XYZ color 63.5802, 63.6401, 62.9656 looks on a white background.

Color Contrast Check

Large Text (above 18pt) WCAG AA × Fail

Any Text WCAG AA × Fail

Large Text (above 18pt) WCAG AAA × Fail

Any Text WCAG AAA × Fail

Black Background



This preview shows how the XYZ color 63.5802, 63.6401, 62.9656 looks on a black background.

Color Contrast Check

Large Text (above 18pt) WCAG AA ✓ Pass

Any Text WCAG AA ✓ Pass

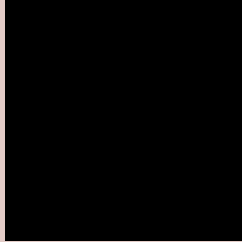
Large Text (above 18pt) WCAG AAA ✓ Pass

Any Text WCAG AAA ✓ Pass

If you want to check with other color combinations, try the [Color Contrast Checker](#).

XYZ 63.5802, 63.6401, 62.9656

Background



This preview shows how black text looks on a background with the XYZ color 63.5802, 63.6401, 62.9656.



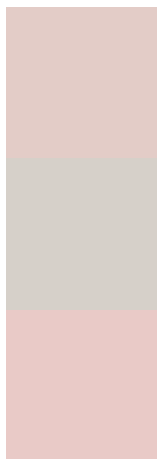
This preview shows how white text looks on a background with the XYZ color 63.5802, 63.6401,

62.9656.

Color Blindness Simulation

Color vision deficiency is a very complex topic, and I could not describe the different causes any better than Wikipedia does, so if you want to learn more, you should check out their [article about color blindness](#).

Dichromacy



Original Color

63.5802, 63.6401, 62.9656

Protanopia

60.8300, 63.6249, 64.3331

Deuteranopia

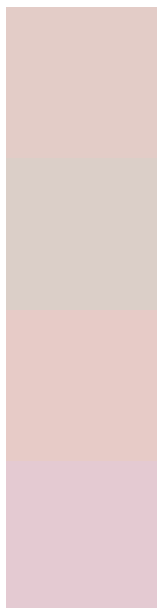
65.0336, 63.6882, 62.8982



Tritanopia

65.7241, 63.4411, 74.4270

Trichromacy



Original Color

63.5802, 63.6401, 62.9656

Protanomaly

61.9516, 63.8558, 63.7038

Deuteranomaly

64.6197, 63.8243, 62.9463

Tritanomaly

64.7483, 63.3882, 69.7953

Monochromacy



Original Color

63.5802, 63.6401, 62.9656

Achromatopsia

61.2578, 64.4480, 70.1838

Achromatomaly

62.0154, 64.1669, 67.5094

CSS Examples

Text

The CSS property to change the color of the text to XYZ 63.5802, 63.6401, 62.9656 is called "color". The color property can be set on classes, ids or directly on the HTML element.

This example shows how text in the color `rgb(227, 204, 199)` looks like.

```
.text, #text, p{  
    color:rgb(227, 204, 199)  
}
```

If you want to add a text shadow in that color use the text-shadow property, you can generate a text shadow directly with our [CSS Text Shadow Generator](#).

Here you see how black text with a 4 pixel rgb(227, 204, 199) colored shadow looks like.

```
.shadow{ text-shadow: 4px 4px 2px rgb(227, 204, 199) }
```

Border

The CSS property to change the border of an element to XYZ 63.5802, 63.6401, 62.9656 is called "border". The border property can be set on classes, ids or directly on the HTML element.

This example shows the color as border, it can be applied via the CSS property "border" or "border-color".

```
.border, #border, table{ border:4px solid rgb(227, 204, 199) }
```


If only the border color should be changed use the property `border-color`.

```
.border{ border-color:rgb(227, 204, 199) }
```

If you want to add a box shadow in that color use:

Here you see how a box with a 4 pixel `rgb(227, 204, 199)` colored shadow looks like.

```
.boxshadow{ -moz-box-shadow:4px 4px 4px 4px rgb(227, 204, 199); -webkit-box-shadow:4px 4px 4px 4px rgb(227, 204, 199); box-shadow:4px 4px 4px 4px rgb(227, 204, 199) }
```

Background

The CSS property to change the background color of an element to XYZ 63.5802, 63.6401, 62.9656 is called "background". The background property can be set on classes, ids or directly on the HTML element.

```
.background, #background, body{  
background: rgb(227, 204, 199) }
```

If only the background color should be changed can be used:

```
.background{ background-color: rgb(227,  
204, 199) }
```

This example shows the color as background, it is applied via the CSS property "background".

To optimize and compress your CSS code, you can use our [online CSS compressor and optimizer](#) based on csstidy. If you want to create a linear or radial gradient as background or border, check our [CSS Gradient Generator](#).

Hey! You found this booklet interesting? Support Converting Colors with the new Membership Option!

The pro membership hides all ads, plus gives you double the colors in the color bucket, and more awesome pro features!

[Learn more, Memberships starting at \\$2.50/m!](#)

**Follow me
on Twitter!**

@ConvertingColor