

Converting Colors

XYZ(63.7584, 63.9857, 62.7697)

Have a look what the booklet for
XYZ(63.7584, 63.9857, 62.7697)
contains.

XYZ(63.8187, 64.1171, 63.0451)	3
<i>Conversions</i>	4
<i>Details</i>	6
<i>Harmonies</i>	12
<i>Previews</i>	24
<i>Color Blindness Simulation</i>	28
<i>CSS Examples</i>	31

Color

**XYZ(63.8187, 64.1171,
63.0451)**

Conversions

Conversions Part 1

Format	Color
Hex	E3CDC7
RGB	227, 205, 199
RGB Percent	89%, 80%, 78%
CMY	0.1098, 0.1961, 0.2196
CMYK	0.00, 0.10, 0.12, 0.11
HSL	13°, 33%, 84%
HSV	13°, 12%, 89%
XYZ	63.8187, 64.1171, 63.0451
YIQ	210.8940, 15.0380, 2.7980

Conversions

Conversions Part 2

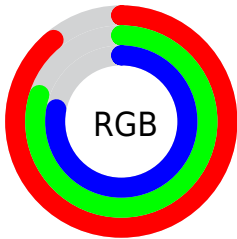
Format	Color
R_{YB}	227, 207, 199
Decimal	14929351
CIE _{Lab}	84.03, 6.68, 5.76
CIE _{LCh}	84, 8.824, 40.780
Yxy	64.1171, 0.3342, 0.3357
Android (android.graphics.Color)	4293119431 (0xFFE3CDC7)
YUV	210.8940, -5.8637, 14.1250
Hunter-Lab	80.0732, 2.1374, 9.3696

Details

The XYZ color **63.8187, 64.1171, 63.0451** is a light color, and the websafe version is hex **CCCCCC**. A complement of this color would be **63.2745, 69.3997, 82.7342**, and the grayscale version is **61.8790, 65.1015, 70.8955**.

A 20% lighter version of the original color is **95.0500, 100.0000, 108.9000**, and **32.9720, 32.8355, 31.3881** is the 20% darker color. If you saturate the color by 10%, you get **57.3523, 55.0917, 48.8418**, and if you desaturate by 10%, it is **71.1681, 74.2778, 79.4839**.

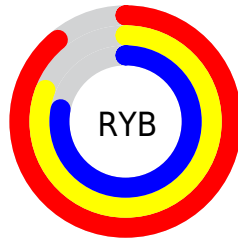
Distribution



Red (89%)

Green (80%)

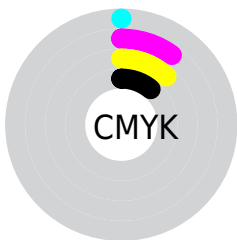
Blue (78%)



Red (89%)

Yellow (81%)

Blue (78%)

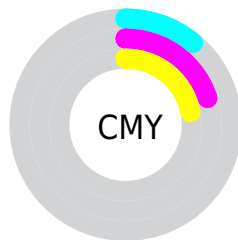


Cyan (0%)

Magenta (10%)

Yellow (12%)

Black (11%)



Cyan (11%)

Magenta (20%)

Yellow (22%)

Brightness & Saturation Gradients

These gradients show how the XYZ color 63.8187, 64.1171, 63.0451 changes by changing the brightness by 10 percent. The first figure shows a shift by +10% for each color and the second figure -10%.

Similar to the brightness gradients but the following saturation gradients show a change of the XYZ color 63.8187, 64.1171, 63.0451 by changing the saturation by 10% instead.

63.8187, 64.1171,
63.0451

63.8187, 64.1171,
63.0451

428.1472,
439.6124, 453.8456

46.7650, 46.7455,
45.4365

109.4250,
110.7796, 110.8208

33.0571, 32.8345,
31.4559

138.7083,
140.8392, 141.8249

22.3296, 21.9997,
20.6849

172.7988,
175.8971, 178.1313

14.2173, 13.8567,
12.7049

212.0619,
216.3375, 220.1584

8.3546, 8.0211,
7.0973

256.8629,
262.5448, 268.3249

4.3764, 4.1084,
3.4437

307.5673,

1.9172, 1.7344,

314.9035, 323.0492

1.3254

364.5402,
373.7979, 384.7499

■ 0.5868, 0.4458,
0.0825

■ 0.0000, 0.0000,
0.0000

■ 63.8187, 64.1171,
63.0451

■ 63.8187, 64.1171,
63.0451

■ 57.3523, 55.0917,
48.8418

■ 71.1681, 74.2778,
79.4839

■ 51.7299, 47.1538,
36.7732

■ 79.4269, 85.6027,
98.2449

■ 46.9175, 40.2643,
26.7366

■ 85.4888, 95.0710,
108.4525

■ 42.8767, 34.3788,
18.6195

■ 39.5659, 29.4497,
12.2981

■ 36.9392, 25.4252,
7.6342

■ 34.9453, 22.2485,
4.4691

■ 33.5247, 19.8558,
2.6125

■ 32.7637, 18.5007,
1.8442

Harmonies

Analogous

The Analogous color harmony consists of three colors that are next to each other on the color wheel.



64.6913, 64.1171, 67.8276



63.8187, 64.1171, 63.0451



62.1814, 64.1171, 60.1754

Triad

The Triadic color harmony groups three colors that are evenly spaced from another and form a triangle on the color wheel.



63.8187, 64.1171, 63.0451



57.4762, 64.1171, 66.3441



61.6438, 64.1171, 80.8769

Complementary

The Complementary color scheme is a pair of colors which are on the opposite of each other on the color wheel.



63.8187, 64.1171, 63.0451



63.2745, 69.3997, 82.7342

Split Complementary

Split-complementary colors differ from the complementary color scheme. The scheme consists of three colors, the original color and two neighbors of the complement color.



59.7179, 64.1171, 80.4275



63.8187, 64.1171, 63.0451



57.3393, 64.1171, 71.8360

Square

The Square scheme is like the rectangle color scheme, but the four colors are evenly spaced on the color wheel.



63.8187, 64.1171, 63.0451



58.5301, 64.1171, 62.0089



58.1519, 64.1171, 77.0479



63.4180, 64.1171, 78.2451

Rectangle

The Rectangle color scheme consists of four colors that form a rectangle on the color wheel.



63.8187, 64.1171, 63.0451



60.8905, 64.1171, 59.6370



58.1519, 64.1171, 77.0479



60.9923, 64.1171, 81.0846

Sweetspot

The Sweet Spot groups the original color and five complimentary colors.



63.8205, 64.1199, 63.0465



90.9478, 94.3541, 99.6449



65.2073, 62.4205, 77.2986



19.3060, 19.9743, 20.9673



0.0000, 0.0000, 0.0000



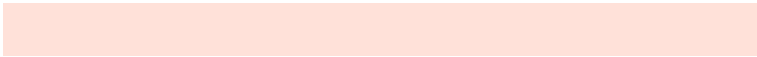
20.3446, 21.4041, 23.3091

Same Dimension

The Same Dimension uses a secret algorithm to generate beautiful new colors.



63.8205, 64.1199, 63.0465



80.6442, 80.0813, 76.6821



67.2154, 70.9098, 64.1781



14.6262, 14.8664, 15.0031



19.1770, 10.9282, 1.0986



1.4842, 0.9417, 0.1035

Inverse Universe

The Inverse Universe completely reimagines the original color for something new.



63.2745, 69.3997, 82.7342



79.7900, 88.3314, 107.4520



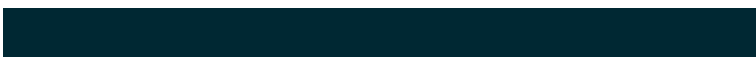
59.8290, 62.5088, 81.5858



14.5314, 15.7842, 18.4251



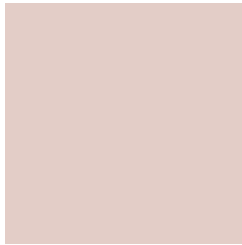
17.4970, 22.0560, 45.7182



1.3585, 1.7609, 3.4003

Previews

White Background



This preview shows how the XYZ color 63.8187, 64.1171, 63.0451 looks on a white background.

Color Contrast Check

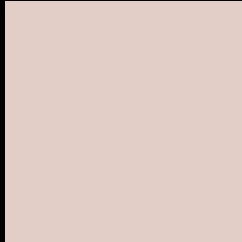
Large Text (above 18pt) WCAG AA × Fail

Any Text WCAG AA × Fail

Large Text (above 18pt) WCAG AAA × Fail

Any Text WCAG AAA × Fail

Black Background



This preview shows how the XYZ color 63.8187, 64.1171, 63.0451 looks on a black background.

Color Contrast Check

Large Text (above 18pt) WCAG AA ✓ Pass

Any Text WCAG AA ✓ Pass

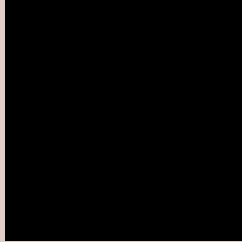
Large Text (above 18pt) WCAG AAA ✓ Pass

Any Text WCAG AAA ✓ Pass

If you want to check with other color combinations, try the [Color Contrast Checker](#).

XYZ 63.8187, 64.1171, 63.0451

Background



This preview shows how black text looks on a background with the XYZ color 63.8187, 64.1171, 63.0451.

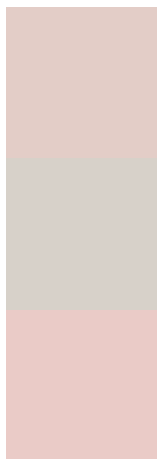


This preview shows how white text looks on a background with the XYZ color 63.8187, 64.1171,

Color Blindness Simulation

Color vision deficiency is a very complex topic, and I could not describe the different causes any better than Wikipedia does, so if you want to learn more, you should check out their [article about color blindness](#).

Dichromacy



Original Color

63.8187, 64.1171, 63.0451

Protanopia

61.3674, 64.2650, 64.4283

Deuteranopia

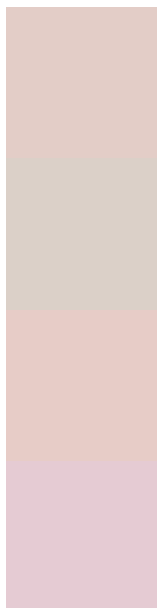
65.5964, 64.3278, 62.9920



Tritanopia

66.4085, 64.1260, 75.2071

Trichromacy



Original Color

63.8187, 64.1171, 63.0451

Protanomaly

62.1946, 64.3420, 63.7848

Deuteranomaly

64.8567, 64.2982, 63.0253

Tritanomaly

65.4269, 64.0730, 70.5470

Monochromacy



Original Color

63.8187, 64.1171, 63.0451

Achromatopsia

61.9161, 65.1406, 70.9381

Achromatomaly

62.6782, 64.8576, 68.2468

CSS Examples

Text

The CSS property to change the color of the text to XYZ 63.8187, 64.1171, 63.0451 is called "color". The color property can be set on classes, ids or directly on the HTML element.

This example shows how text in the color `rgb(227, 205, 199)` looks like.

```
.text, #text, p{  
    color:rgb(227, 205, 199)  
}
```

If you want to add a text shadow in that color use the text-shadow property, you can generate a text shadow directly with our [CSS Text Shadow Generator](#).

Here you see how black text with a 4 pixel rgb(227, 205, 199) colored shadow looks like.

```
.shadow{ text-shadow: 4px 4px 2px rgb(227, 205, 199) }
```

Border

The CSS property to change the border of an element to XYZ 63.8187, 64.1171, 63.0451 is called "border". The border property can be set on classes, ids or directly on the HTML element.

This example shows the color as border, it can be applied via the CSS property "border" or "border-color".

```
.border, #border, table{ border:4px solid rgb(227, 205, 199) }
```


If only the border color should be changed use the property `border-color`.

```
.border{ border-color:rgb(227, 205, 199) }
```

If you want to add a box shadow in that color use:

Here you see how a box with a 4 pixel `rgb(227, 205, 199)` colored shadow looks like.

```
.boxshadow{ -moz-box-shadow:4px 4px 4px 4px rgb(227, 205, 199); -webkit-box-shadow:4px 4px 4px 4px rgb(227, 205, 199); box-shadow:4px 4px 4px 4px rgb(227, 205, 199) }
```

Background

The CSS property to change the background color of an element to XYZ 63.8187, 64.1171, 63.0451 is called "background". The background property can be set on classes, ids or directly on the HTML element.

```
.background, #background, body{  
background: rgb(227, 205, 199) }
```

If only the background color should be changed can be used:

```
.background{ background-color: rgb(227,  
205, 199) }
```

This example shows the color as background, it is applied via the CSS property "background".

To optimize and compress your CSS code, you can use our [online CSS compressor and optimizer](#) based on csstidy. If you want to create a linear or radial gradient as background or border, check our [CSS Gradient Generator](#).

Hey! You found this booklet interesting? Support Converting Colors with the new Membership Option!

The pro membership hides all ads, plus gives you double the colors in the color bucket, and more awesome pro features!

[Learn more, Memberships starting at \\$2.50/m!](#)

**Follow me
on Twitter!**

@ConvertingColor