

Converting Colors

XYZ(63.7747, 62.3049, 57.3811)

Have a look what the booklet for
XYZ(63.7747, 62.3049, 57.3811)
contains.

XYZ(63.8802, 62.5187, 57.4157)	3
<i>Conversions</i>	4
<i>Details</i>	6
<i>Harmonies</i>	12
<i>Previews</i>	24
<i>Color Blindness Simulation</i>	28
<i>CSS Examples</i>	31

Color

**XYZ(63.8802, 62.5187,
57.4157)**

Conversions

Conversions Part 1

Format	Color
Hex	EAC8BE
RGB	234, 200, 190
RGB Percent	92%, 78%, 75%
CMY	0.0824, 0.2157, 0.2549
CMYK	0.00, 0.15, 0.19, 0.08
HSL	14°, 51%, 83%
HSV	14°, 19%, 92%
XYZ	63.8802, 62.5187, 57.4157
YIQ	209.0260, 23.4740, 4.0980

Conversions

Conversions Part 2

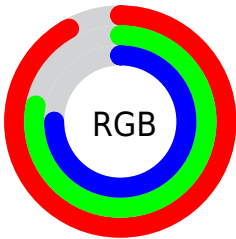
Format	Color
R_{YB}	234, 203, 190
Decimal	15386814
CIE _{Lab}	83.19, 10.43, 9.43
CIE _{LCh}	83, 14.068, 42.119
Yxy	62.5187, 0.3475, 0.3401
Android (android.graphics.Color)	4293576894 (0xFFEAC8BE)
YUV	209.0260, -9.3798, 21.9022
Hunter-Lab	79.0688, 5.8410, 12.2948

Details

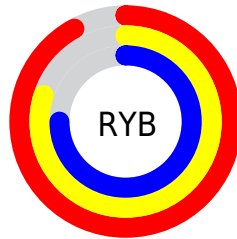
The XYZ color **63.8802, 62.5187, 57.4157** is a light color, and the websafe version is hex **FFCCCC**. A complement of this color would be **62.7416, 70.1972, 88.0848**, and the grayscale version is **60.6713, 63.8309, 69.5118**.

A 20% lighter version of the original color is **93.6346, 99.4338, 101.4464**, and **33.1543, 31.8289, 28.0631** is the 20% darker color. If you saturate the color by 10%, you get **57.5830, 53.6935, 43.6953**, and if you desaturate by 10%, it is **71.0867, 72.5041, 73.4664**.

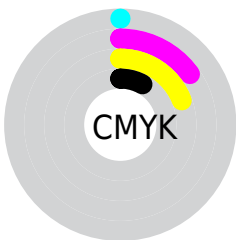
Distribution



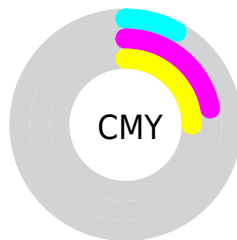
- Red (92%)
- Green (78%)
- Blue (75%)



- Red (92%)
- Yellow (80%)
- Blue (75%)



- Cyan (0%)
- Magenta (15%)
- Yellow (19%)
- Black (8%)





- Cyan (8%)
- Magenta (22%)
- Yellow (25%)

Brightness & Saturation Gradients

These gradients show how the XYZ color 63.8802, 62.5187, 57.4157 changes by changing the brightness by 10 percent. The first figure shows a shift by +10% for each color and the second figure -10%.


Similar to the brightness gradients but the following saturation gradients show a change of the XYZ color 63.8802, 62.5187, 57.4157 by changing the saturation by 10% instead.


 63.8802, 62.5187,
57.4157

 63.8802, 62.5187,
57.4157


428.3660,
433.8206, 432.5425

 46.8150, 45.4520,
40.9275


 109.5131,
108.4748, 102.5778

 33.0967, 31.8136,
27.9432


138.8115,
138.1330, 132.0889

 22.3602, 21.2191,
18.0442


172.9182,
172.7572, 166.7779

 14.2399, 13.2843,
10.8119

212.1988,
212.7316, 207.0635

 8.3705, 7.6246,
5.8279

257.0185,
258.4408, 253.3643

 4.3867, 3.8557,
2.6736

307.7427,

 1.9232, 1.5932,

310.2691, 306.0986

0.9301

364.7367,
368.6009, 365.6852

■ 0.5902, 0.3530,
0.0000

■ 0.0000, 0.0000,
0.0000

■ 63.8802, 62.5187,
57.4157

■ 63.8802, 62.5187,
57.4157

■ 57.5830, 53.6935,
43.6953

■ 71.0867, 72.5041,
73.4664

■ 52.1531, 45.9779,
32.1925

■ 79.2318, 83.6812,
91.9450

■ 47.5530, 39.3299,
22.7913

■ 87.5012, 95.7512,
108.4778

■ 43.7402, 33.7015,
15.3631

■ 87.7418, 96.2325,
108.5580

■ 40.6683, 29.0411,
9.7656

■ 38.2855, 25.2923,
5.8367

■ 36.5327, 22.3924,
3.3858

■ 35.3310, 20.2663,
2.1301

■ 35.2144, 20.0575,
2.0155

Harmonies

Analogous

The Analogous color harmony consists of three colors that are next to each other on the color wheel.



65.3437, 62.5187, 64.6060



63.8802, 62.5187, 57.4157



61.2415, 62.5187, 53.3035

Triad

The Triadic color harmony groups three colors that are evenly spaced from another and form a triangle on the color wheel.



63.8802, 62.5187, 57.4157



54.0127, 62.5187, 63.0433



60.6621, 62.5187, 85.8535

Complementary

The Complementary color scheme is a pair of colors which are on the opposite of each other on the color wheel.



63.8802, 62.5187, 57.4157



62.7416, 70.1972, 88.0848

Split Complementary

Split-complementary colors differ from the complementary color scheme. The scheme consists of three colors, the original color and two neighbors of the complement color.



57.6392, 62.5187, 85.3442



63.8802, 62.5187, 57.4157



53.8696, 62.5187, 71.6603

Square

The Square scheme is like the rectangle color scheme, but the four colors are evenly spaced on the color wheel.



63.8802, 62.5187, 57.4157



55.5743, 62.5187, 56.3562



55.1765, 62.5187, 79.9719



63.4436, 62.5187, 81.3090

Rectangle

The Rectangle color scheme consists of four colors that form a rectangle on the color wheel.



63.8802, 62.5187, 57.4157



59.2056, 62.5187, 52.6268



55.1765, 62.5187, 79.9719



59.6393, 62.5187, 86.2778

Sweetspot

The Sweet Spot groups the original color and five complimentary colors.



63.8819, 62.5215, 57.4170



89.0278, 91.7417, 95.2203



65.8637, 59.7273, 78.9109



18.9207, 19.4510, 20.0764



0.0000, 0.0000, 0.0000



20.3446, 21.4041, 23.3091

Same Dimension

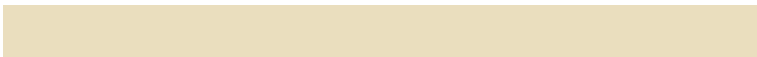
The Same Dimension uses a secret algorithm to generate beautiful new colors.



63.8819, 62.5215, 57.4170



74.2127, 71.1995, 62.2651



69.2240, 73.2057, 59.1977



15.3433, 15.6096, 15.7230



19.8665, 11.4272, 1.1586



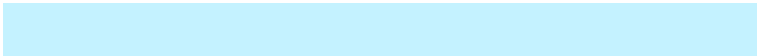
1.6309, 1.0391, 0.1146

Inverse Universe

The Inverse Universe completely reimagines the original color for something new.



62.7416, 70.1972, 88.0848



72.5585, 82.3075, 106.6704



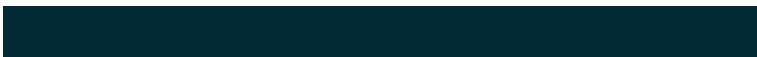
57.3174, 59.3489, 86.2768



15.2104, 16.5072, 19.3068



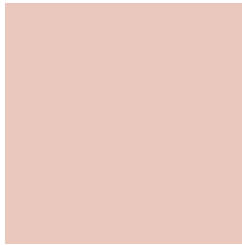
17.7067, 22.0605, 47.0678



1.4613, 1.8740, 3.7196

Previews

White Background



This preview shows how the XYZ color 63.8802, 62.5187, 57.4157 looks on a white background.

Color Contrast Check

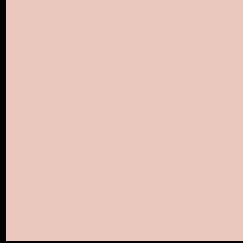
Large Text (above 18pt) WCAG AA × Fail

Any Text WCAG AA × Fail

Large Text (above 18pt) WCAG AAA × Fail

Any Text WCAG AAA × Fail

Black Background



This preview shows how the XYZ color 63.8802, 62.5187, 57.4157 looks on a black background.

Color Contrast Check

Large Text (above 18pt) WCAG AA ✓ Pass

Any Text WCAG AA ✓ Pass

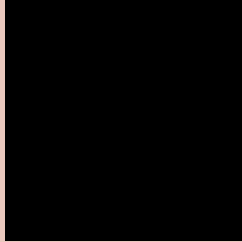
Large Text (above 18pt) WCAG AAA ✓ Pass

Any Text WCAG AAA ✓ Pass

If you want to check with other color combinations, try the [Color Contrast Checker](#).

XYZ 63.8802, 62.5187, 57.4157

Background



This preview shows how black text looks on a background with the XYZ color 63.8802, 62.5187, 57.4157.



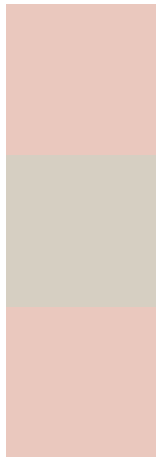
This preview shows how white text looks on a background with the XYZ color 63.8802, 62.5187,

57.4157.

Color Blindness Simulation

Color vision deficiency is a very complex topic, and I could not describe the different causes any better than Wikipedia does, so if you want to learn more, you should check out their [article about color blindness](#).

Dichromacy



Original Color

63.8802, 62.5187, 57.4157

Protanopia

59.7820, 62.8168, 60.0129

Deuteranopia

63.8802, 62.5187, 57.4157



Tritanopia

66.7750, 62.6905, 70.8684

Trichromacy



Original Color

63.8802, 62.5187, 57.4157

Protanomaly

61.0373, 62.4081, 59.2810

Deuteranomaly

63.8802, 62.5187, 57.4157

Tritanomaly

65.6852, 62.5807, 65.7440

Monochromacy



Original Color

63.8802, 62.5187, 57.4157

Achromatopsia

60.6036, 63.7597, 69.4343

Achromatomaly

61.6454, 63.3123, 64.8485

CSS Examples

Text

The CSS property to change the color of the text to XYZ 63.8802, 62.5187, 57.4157 is called "color". The color property can be set on classes, ids or directly on the HTML element.

This example shows how text in the color `rgb(234, 200, 190)` looks like.

```
.text, #text, p{  
    color:rgb(234, 200, 190)  
}
```

If you want to add a text shadow in that color use the text-shadow property, you can generate a text shadow directly with our [CSS Text Shadow Generator](#).

Here you see how black text with a 4 pixel rgb(234, 200, 190) colored shadow looks like.

```
.shadow{ text-shadow: 4px 4px 2px rgb(234, 200, 190) }
```

Border

The CSS property to change the border of an element to XYZ 63.8802, 62.5187, 57.4157 is called "border". The border property can be set on classes, ids or directly on the HTML element.

This example shows the color as border, it can be applied via the CSS property "border" or "border-color".

```
.border, #border, table{ border:4px solid rgb(234, 200, 190) }
```


If only the border color should be changed use the property border-color.

```
.border{ border-color:rgb(234, 200, 190) }
```

If you want to add a box shadow in that color use:

Here you see how a box with a 4 pixel rgb(234, 200, 190) colored shadow looks like.

```
.boxshadow{ -moz-box-shadow:4px 4px 4px  
4px rgb(234, 200, 190); -webkit-box-  
shadow:4px 4px 4px 4px rgb(234, 200, 190);  
box-shadow:4px 4px 4px 4px rgb(234, 200,  
190) }
```

Background

The CSS property to change the background color of an element to XYZ 63.8802, 62.5187, 57.4157 is called "background". The background property can be set on classes, ids or directly on the HTML element.

```
.background, #background, body{  
background: rgb(234, 200, 190) }
```

If only the background color should be changed can be used:

```
.background{ background-color: rgb(234,  
200, 190) }
```

This example shows the color as background, it is applied via the CSS property "background".

To optimize and compress your CSS code, you can use our [online CSS compressor and optimizer](#) based on csstidy. If you want to create a linear or radial gradient as background or border, check our [CSS Gradient Generator](#).

Hey! You found this booklet interesting? Support Converting Colors with the new Membership Option!

The pro membership hides all ads, plus gives you double the colors in the color bucket, and more awesome pro features!

[Learn more, Memberships starting at \\$2.50/m!](#)

**Follow me
on Twitter!**

@ConvertingColor