

Converting Colors

XYZ(63.8200, 63.5418, 57.0452)

Have a look what the booklet for
XYZ(63.8200, 63.5418, 57.0452)
contains.

XYZ(63.8200, 63.5418, 57.0452)	3
<i>Conversions</i>	4
<i>Details</i>	6
<i>Harmonies</i>	12
<i>Previews</i>	24
<i>Color Blindness Simulation</i>	28
<i>CSS Examples</i>	31

Color

**XYZ(63.8200, 63.5418,
57.0452)**

Conversions

Conversions Part 1

Format	Color
Hex	E8CBBD
RGB	232, 203, 189
RGB Percent	91%, 80%, 74%
CMY	0.0902, 0.2039, 0.2588
CMYK	0.00, 0.12, 0.19, 0.09
HSL	20°, 48%, 83%
HSV	20°, 19%, 91%
XYZ	63.8200, 63.5418, 57.0452
YIQ	210.0750, 21.7780, 1.7940

Conversions

Conversions Part 2

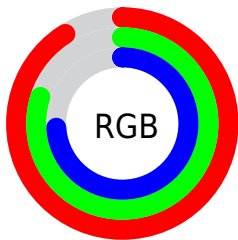
Format	Color
R _Y B	232, 210, 189
Decimal	15256509
CIE Lab	83.73, 7.98, 10.71
CIE LCh	84, 13.356, 53.321
Yxy	63.5418, 0.3461, 0.3446
Android (android.graphics.Color)	4293446589 (0xFFE8CBBB)
YUV	210.0750, -10.3900, 19.2282
Hunter-Lab	79.7131, 3.4129, 13.3694

Details

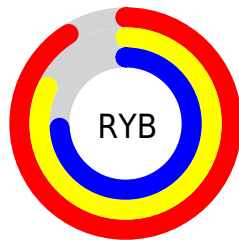
The XYZ color **63.8200, 63.5418, 57.0452** is a light color, and the websafe version is hex **FFCCCC**. A complement of this color would be **60.6228, 66.7864, 86.0405**, and the grayscale version is **61.3653, 64.5611, 70.3070**.

A 20% lighter version of the original color is **93.4814, 99.3726, 100.6400**, and **33.0959, 32.5026, 27.8218** is the 20% darker color. If you saturate the color by 10%, you get **57.9908, 55.5960, 43.6556**, and if you desaturate by 10%, it is **70.4284, 72.4001, 72.6834**.

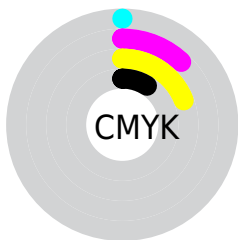
Distribution



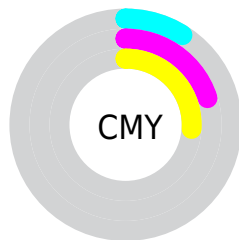
- Red (91%)
- Green (80%)
- Blue (74%)



- Red (91%)
- Yellow (82%)
- Blue (74%)



- Cyan (0%)
- Magenta (12%)
- Yellow (19%)
- Black (9%)





- Cyan (9%)
- Magenta (20%)
- Yellow (26%)

Brightness & Saturation Gradients


These gradients show how the XYZ color 63.8200, 63.5418, 57.0452 changes by changing the brightness by 10 percent. The first figure shows a shift by +10% for each color and the second figure -10%.


Similar to the brightness gradients but the following saturation gradients show a change of the XYZ color 63.8200, 63.5418, 57.0452 by changing the saturation by 10% instead.


 63.8200, 63.5418,
57.0452

 63.8200, 63.5418,
57.0452


428.1519,
437.5331, 431.1171

 46.7660, 46.2797,
40.6319


 109.4269,
109.9508, 102.0321

 33.0579, 32.4666,
27.7141


138.7104,
139.8664, 131.4429

 22.3303, 21.7181,
17.8731


172.8013,
174.7687, 166.0232

 14.2177, 13.6499,
10.6904

212.0648,
215.0420, 206.1916

 8.3550, 7.8776,
5.7475

256.8662,
261.0706, 252.3666

 4.3766, 4.0167,
2.6259

307.5710,

 1.9173, 1.6829,

313.2391, 304.9669

0.9058

364.5444,
371.9318, 364.4109

■ 0.5869, 0.4126,
0.0000

■ 0.0000, 0.0000,
0.0000

■ 63.8200, 63.5418,
57.0452

■ 63.8200, 63.5418,
57.0452

■ 57.9908, 55.5960,
43.6556

■ 70.4284, 72.4001,
72.6834

■ 52.9055, 48.5245,
32.4063

■ 77.8391, 82.1906,
90.6637

■ 48.5336, 42.2989,
23.1859

■ 85.4954, 92.7088,
107.9962

■ 44.8404, 36.8859,
15.8713

■ 87.0890, 95.8959,
108.5274

■ 41.7880, 32.2497,
10.3259

■ 39.3340, 28.3517,
6.3944

■ 37.4303, 25.1493,
3.8944

■ 36.0115, 22.5911,
2.5602

■ 35.8331, 22.2642,
2.4088

Harmonies

Analogous

The Analogous color harmony consists of three colors that are next to each other on the color wheel.



65.7129, 63.5418, 62.9981



63.8200, 63.5418, 57.0452



61.0517, 63.5418, 54.3771

Triad

The Triadic color harmony groups three colors that are evenly spaced from another and form a triangle on the color wheel.



63.8200, 63.5418, 57.0452



54.9742, 63.5418, 67.3279



62.6506, 63.5418, 85.0723

Complementary

The Complementary color scheme is a pair of colors which are on the opposite of each other on the color wheel.



63.8200, 63.5418, 57.0452



60.6228, 66.7864, 86.0405

Split Complementary

Split-complementary colors differ from the complementary color scheme. The scheme consists of three colors, the original color and two neighbors of the complement color.



59.7422, 63.5418, 86.4660



63.8200, 63.5418, 57.0452



55.3712, 63.5418, 75.7668

Square

The Square scheme is like the rectangle color scheme, but the four colors are evenly spaced on the color wheel.



63.8200, 63.5418, 57.0452



55.9914, 63.5418, 59.9958



57.0940, 63.5418, 82.9381



65.0227, 63.5418, 79.2703

Rectangle

The Rectangle color scheme consists of four colors that form a rectangle on the color wheel.



63.8200, 63.5418, 57.0452



59.1068, 63.5418, 54.6538



57.0940, 63.5418, 82.9381



61.7009, 63.5418, 86.0902

Sweetspot

The Sweet Spot groups the original color and five complimentary colors.



63.8217, 63.5447, 57.0465



89.4802, 92.6466, 95.3711



64.1822, 58.6339, 74.5284



19.0274, 19.6644, 20.1120



0.0000, 0.0000, 0.0000



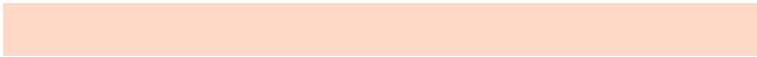
20.3446, 21.4041, 23.3091

Same Dimension

The Same Dimension uses a secret algorithm to generate beautiful new colors.



63.8217, 63.5447, 57.0465



76.3941, 75.0927, 64.4399



69.1517, 74.2047, 58.8232



14.7584, 15.1307, 15.0471



19.9949, 12.5639, 1.3712



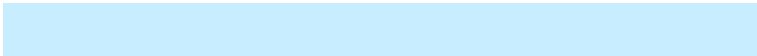
1.5597, 1.0927, 0.1287

Inverse Universe

The Inverse Universe completely reimagines the original color for something new.



60.6228, 66.7864, 86.0405



71.7825, 79.7601, 106.2196



55.4923, 56.5254, 84.3303



14.3911, 15.5036, 18.3783



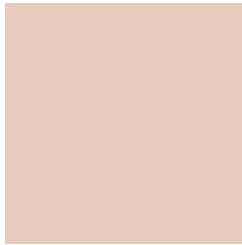
14.8467, 16.7556, 44.8348



1.1808, 1.4055, 3.3410

Previews

White Background



This preview shows how the XYZ color 63.8200, 63.5418, 57.0452 looks on a white background.

Color Contrast Check

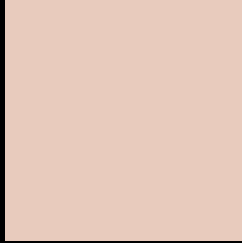
Large Text (above 18pt) WCAG AA × Fail

Any Text WCAG AA × Fail

Large Text (above 18pt) WCAG AAA × Fail

Any Text WCAG AAA × Fail

Black Background



This preview shows how the XYZ color 63.8200, 63.5418, 57.0452 looks on a black background.

Color Contrast Check

Large Text (above 18pt) WCAG AA ✓ Pass

Any Text WCAG AA ✓ Pass

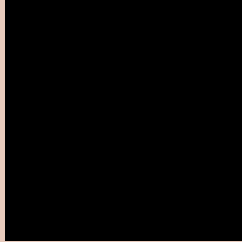
Large Text (above 18pt) WCAG AAA ✓ Pass

Any Text WCAG AAA ✓ Pass

If you want to check with other color combinations, try the [Color Contrast Checker](#).

XYZ 63.8200, 63.5418, 57.0452

Background



This preview shows how black text looks on a background with the XYZ color 63.8200, 63.5418, 57.0452.



This preview shows how white text looks on a background with the XYZ color 63.8200, 63.5418,

Color Blindness Simulation

Color vision deficiency is a very complex topic, and I could not describe the different causes any better than Wikipedia does, so if you want to learn more, you should check out their [article about color blindness](#).

Dichromacy



Original Color

63.8200, 63.5418, 57.0452

Protanopia

60.6856, 63.6692, 58.9601

Deuteranopia

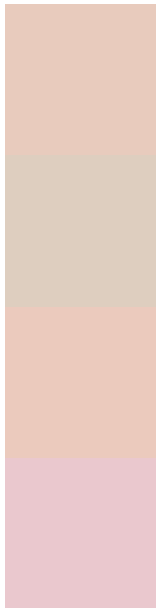
64.6640, 63.2803, 56.9503



Tritanopia

66.9501, 63.4153, 73.0017

Trichromacy



Original Color

63.8200, 63.5418, 57.0452

Protanomaly

61.5995, 63.4338, 58.2875

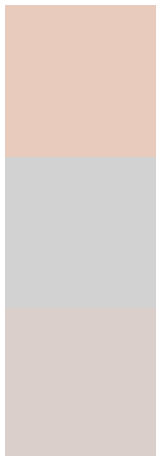
Deuteranomaly

64.5668, 63.5774, 57.0127

Tritanomaly

65.7265, 63.2572, 67.1382

Monochromacy



Original Color

63.8200, 63.5418, 57.0452

Achromatopsia

61.2578, 64.4480, 70.1838

Achromatomaly

61.8869, 63.7953, 64.9291

CSS Examples

Text

The CSS property to change the color of the text to XYZ 63.8200, 63.5418, 57.0452 is called "color". The color property can be set on classes, ids or directly on the HTML element.

This example shows how text in the color `rgb(232, 203, 189)` looks like.

```
.text, #text, p{  
    color:rgb(232, 203, 189)  
}
```

If you want to add a text shadow in that color use the text-shadow property, you can generate a text shadow directly with our [CSS Text Shadow Generator](#).

Here you see how black text with a 4 pixel rgb(232, 203, 189) colored shadow looks like.

```
.shadow{ text-shadow: 4px 4px 2px rgb(232, 203, 189) }
```

Border

The CSS property to change the border of an element to XYZ 63.8200, 63.5418, 57.0452 is called "border". The border property can be set on classes, ids or directly on the HTML element.

This example shows the color as border, it can be applied via the CSS property "border" or "border-color".

```
.border, #border, table{ border:4px solid rgb(232, 203, 189) }
```


If only the border color should be changed use the property `border-color`.

```
.border{ border-color:rgb(232, 203, 189) }
```

If you want to add a box shadow in that color use:

Here you see how a box with a 4 pixel `rgb(232, 203, 189)` colored shadow looks like.

```
.boxshadow{ -moz-box-shadow:4px 4px 4px 4px rgb(232, 203, 189); -webkit-box-shadow:4px 4px 4px 4px rgb(232, 203, 189); box-shadow:4px 4px 4px 4px rgb(232, 203, 189) }
```

Background

The CSS property to change the background color of an element to XYZ 63.8200, 63.5418, 57.0452 is called "background". The background property can be set on classes, ids or directly on the HTML element.

```
.background, #background, body{  
background: rgb(232, 203, 189) }
```

If only the background color should be changed can be used:

```
.background{ background-color: rgb(232,  
203, 189) }
```

This example shows the color as background, it is applied via the CSS property "background".

To optimize and compress your CSS code, you can use our [online CSS compressor and optimizer](#) based on csstidy. If you want to create a linear or radial gradient as background or border, check our [CSS Gradient Generator](#).

Hey! You found this booklet interesting? Support Converting Colors with the new Membership Option!

The pro membership hides all ads, plus gives you double the colors in the color bucket, and more awesome pro features!

[Learn more, Memberships starting at \\$2.50/m!](#)

**Follow me
on Twitter!**

@ConvertingColor