

Converting Colors

XYZ(63.8926, 65.5532, 65.1626)

Have a look what the booklet for
XYZ(63.8926, 65.5532, 65.1626)
contains.

XYZ(63.8926, 65.5532, 65.1626)	3
<i>Conversions</i>	4
<i>Details</i>	6
<i>Harmonies</i>	12
<i>Previews</i>	24
<i>Color Blindness Simulation</i>	28
<i>CSS Examples</i>	31

Color

**XYZ(63.8926, 65.5532,
65.1626)**

Conversions

Conversions Part 1

Format	Color
Hex	DFD1CA
RGB	223, 209, 202
RGB Percent	87%, 82%, 79%
CMY	0.1255, 0.1804, 0.2078
CMYK	0.00, 0.06, 0.09, 0.13
HSL	20°, 25%, 83%
HSV	20°, 9%, 87%
XYZ	63.8926, 65.5532, 65.1626
YIQ	212.3880, 10.5910, 0.7910

Conversions

Conversions Part 2

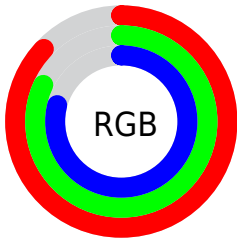
Format	Color
R _Y B	223, 213, 202
Decimal	14668234
CIE Lab	84.77, 3.66, 5.20
CIE LCh	85, 6.352, 54.872
Yxy	65.5532, 0.3283, 0.3368
Android (android.graphics.Color)	4292858314 (0xFFDFD1CA)
YUV	212.3880, -5.1213, 9.3067
Hunter-Lab	80.9649, -0.8273, 8.9574

Details

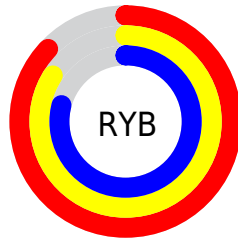
The XYZ color **63.8926, 65.5532, 65.1626** is a light color, and the websafe version is hex **CCCCCC**. A complement of this color would be **62.2321, 66.9948, 79.4642**, and the grayscale version is **62.8671, 66.1411, 72.0276**.

A 20% lighter version of the original color is **95.0500, 100.0000, 108.9000**, and **33.2151, 33.9056, 32.8108** is the 20% darker color. If you saturate the color by 10%, you get **57.9632, 57.6185, 51.0872**, and if you desaturate by 10%, it is **70.5474, 74.3267, 81.3639**.

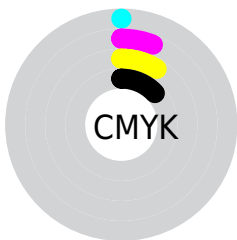
Distribution



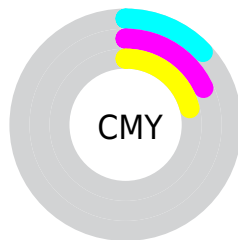
- Red (87%)
- Green (82%)
- Blue (79%)



- Red (87%)
- Yellow (84%)
- Blue (79%)



- Cyan (0%)
- Magenta (6%)
- Yellow (9%)
- Black (13%)



- Cyan (13%)
- Magenta (18%)
- Yellow (21%)

Brightness & Saturation Gradients

These gradients show how the XYZ color 63.8926, 65.5532, 65.1626 changes by changing the brightness by 10 percent. The first figure shows a shift by +10% for each color and the second figure -10%.

Similar to the brightness gradients but the following saturation gradients show a change of the XYZ color 63.8926, 65.5532, 65.1626 by changing the saturation by 10% instead.

■ 63.8926, 65.5532,
65.1626

■ 63.8926, 65.5532,
65.1626

428.4101,
444.7773, 461.6982

■ 46.8250, 47.9098,
47.1408

109.5308,
112.8448, 113.8991

■ 33.1047, 33.7555,
32.7918

138.8323,
143.2618, 145.4509

■ 22.3663, 22.7058,
21.6972

172.9423,
178.7055, 182.3496

■ 14.2444, 14.3764,
13.4384

212.2264,
219.5601, 225.0140

■ 8.3737, 8.3829,
7.5968

257.0499,
266.2103, 273.8625

■ 4.3888, 4.3409,
3.7540

307.7781,

■ 1.9244, 1.8661,

319.0403, 329.3137

1.4914

364.7763,
378.4344, 391.7861

■ 0.5909, 0.5278,
0.2115

■ 0.0000, 0.0000,
0.0000

■ 63.8926, 65.5532,
65.1626

■ 63.8926, 65.5532,
65.1626

■ 57.9632, 57.6185,
51.0872

■ 70.5474, 74.3267,
81.3639

■ 52.7283, 50.4890,
39.0444

■ 77.9465, 83.9542,
99.7703

■ 48.1625, 44.1411,
28.9407

■ 83.7945, 93.5335,
108.2451

■ 44.2368, 38.5471,
20.6729

■ 84.2418, 94.4282,
108.3942

■ 40.9199, 33.6774,
14.1287

■ 38.1775, 29.5003,
9.1830

■ 35.9713, 25.9813,
5.6935

■ 34.2576, 23.0827,
3.4923

■ 32.9715, 20.7563,
2.3059

Harmonies

Analogous

The Analogous color harmony consists of three colors that are next to each other on the color wheel.



64.8196, 65.5532, 68.1337



63.8926, 65.5532, 65.1626



62.5510, 65.5532, 63.8590

Triad

The Triadic color harmony groups three colors that are evenly spaced from another and form a triangle on the color wheel.



63.8926, 65.5532, 65.1626



59.6230, 65.5532, 70.6789



63.4632, 65.5532, 78.7175

Complementary

The Complementary color scheme is a pair of colors which are on the opposite of each other on the color wheel.



63.8926, 65.5532, 65.1626



62.2321, 66.9948, 79.4642

Split Complementary

Split-complementary colors differ from the complementary color scheme. The scheme consists of three colors, the original color and two neighbors of the complement color.



62.0623, 65.5532, 79.4615



63.8926, 65.5532, 65.1626



59.8590, 65.5532, 74.7201

Square

The Square scheme is like the rectangle color scheme, but the four colors are evenly spaced on the color wheel.



63.8926, 65.5532, 65.1626



60.0972, 65.5532, 66.9655



60.7466, 65.5532, 77.9729



64.5690, 65.5532, 75.9766

Rectangle

The Rectangle color scheme consists of four colors that form a rectangle on the color wheel.



63.8926, 65.5532, 65.1626



61.6073, 65.5532, 64.0737



60.7466, 65.5532, 77.9729



63.0106, 65.5532, 79.2137

Sweetspot

The Sweet Spot groups the original color and five complimentary colors.



63.8944, 65.5561, 65.1640



92.2376, 96.3070, 102.0068



63.9475, 62.8878, 73.7348



19.5851, 20.4062, 21.4491



0.0000, 0.0000, 0.0000



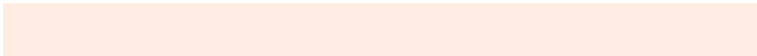
20.3446, 21.4041, 23.3091

Same Dimension

The Same Dimension uses a secret algorithm to generate beautiful new colors.



63.8944, 65.5561, 65.1640



85.1817, 86.9702, 84.9342



66.5551, 70.8775, 66.0509



14.0789, 14.4437, 14.3527



19.4410, 12.3198, 1.3533



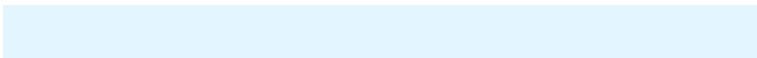
1.4279, 1.0147, 0.1206

Inverse Universe

The Inverse Universe completely reimagines the original color for something new.



62.2321, 66.9948, 79.4642



82.5605, 89.2383, 107.4810



59.6284, 61.7875, 78.5963



13.7113, 14.7618, 17.5143



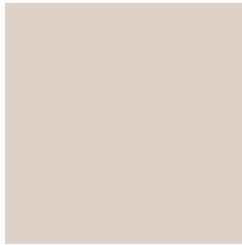
14.2239, 15.9173, 43.3710



1.0672, 1.2659, 3.0333

Previews

White Background



This preview shows how the XYZ color 63.8926, 65.5532, 65.1626 looks on a white background.

Color Contrast Check

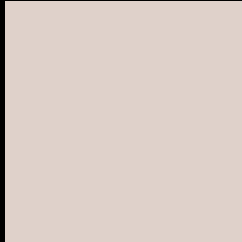
Large Text (above 18pt) WCAG AA × Fail

Any Text WCAG AA × Fail

Large Text (above 18pt) WCAG AAA × Fail

Any Text WCAG AAA × Fail

Black Background



This preview shows how the XYZ color 63.8926, 65.5532, 65.1626 looks on a black background.

Color Contrast Check

Large Text (above 18pt) WCAG AA ✓ Pass

Any Text WCAG AA ✓ Pass

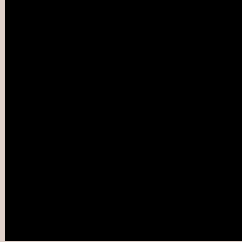
Large Text (above 18pt) WCAG AAA ✓ Pass

Any Text WCAG AAA ✓ Pass

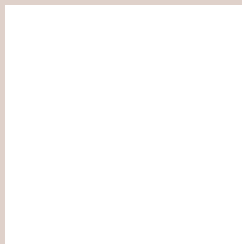
If you want to check with other color combinations, try the [Color Contrast Checker](#).

XYZ 63.8926, 65.5532, 65.1626

Background



This preview shows how black text looks on a background with the XYZ color 63.8926, 65.5532, 65.1626.

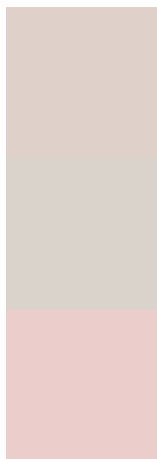


This preview shows how white text looks on a background with the XYZ color 63.8926, 65.5532,

Color Blindness Simulation

Color vision deficiency is a very complex topic, and I could not describe the different causes any better than Wikipedia does, so if you want to learn more, you should check out their [article about color blindness](#).

Dichromacy



Original Color

63.8926, 65.5532, 65.1626

Protanopia

62.6890, 65.6520, 65.8680

Deuteranopia

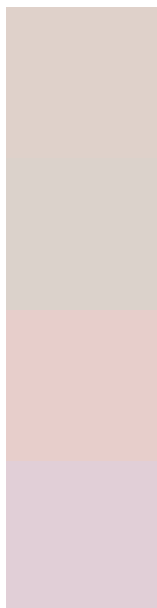
66.8718, 65.6366, 65.6445



Tritanopia

66.6202, 65.5853, 78.2552

Trichromacy



Original Color

63.8926, 65.5532, 65.1626

Protanomaly

63.0395, 65.4651, 65.8134

Deuteranomaly

65.8058, 65.4433, 65.6634

Tritanomaly

65.6299, 65.5395, 73.4813

Monochromacy



Original Color

63.8926, 65.5532, 65.1626

Achromatopsia

62.5785, 65.8375, 71.6970

Achromatomaly

62.9983, 65.7415, 69.0435

CSS Examples

Text

The CSS property to change the color of the text to XYZ 63.8926, 65.5532, 65.1626 is called "color". The color property can be set on classes, ids or directly on the HTML element.

This example shows how text in the color rgb(223, 209, 202) looks like.

```
.text, #text, p{  
    color:rgb(223, 209, 202)  
}
```

If you want to add a text shadow in that color use the text-shadow property, you can generate a text shadow directly with our [CSS Text Shadow Generator](#).

Here you see how black text with a 4 pixel rgb(223, 209, 202) colored shadow looks like.

```
.shadow{ text-shadow: 4px 4px 2px rgb(223, 209, 202) }
```

Border

The CSS property to change the border of an element to XYZ 63.8926, 65.5532, 65.1626 is called "border". The border property can be set on classes, ids or directly on the HTML element.

This example shows the color as border, it can be applied via the CSS property "border" or "border-color".

```
.border, #border, table{ border:4px solid rgb(223, 209, 202) }
```


If only the border color should be changed use the property `border-color`.

```
.border{ border-color:rgb(223, 209, 202) }
```

If you want to add a box shadow in that color use:

Here you see how a box with a 4 pixel `rgb(223, 209, 202)` colored shadow looks like.

```
.boxshadow{ -moz-box-shadow:4px 4px 4px  
4px rgb(223, 209, 202); -webkit-box-  
shadow:4px 4px 4px 4px rgb(223, 209, 202);  
box-shadow:4px 4px 4px 4px rgb(223, 209,  
202) }
```

Background

The CSS property to change the background color of an element to XYZ 63.8926, 65.5532, 65.1626 is called "background". The background property can be set on classes, ids or directly on the HTML element.

```
.background, #background, body{  
background: rgb(223, 209, 202) }
```

If only the background color should be changed can be used:

```
.background{ background-color: rgb(223,  
209, 202) }
```

This example shows the color as background, it is applied via the CSS property "background".

To optimize and compress your CSS code, you can use our [online CSS compressor and optimizer](#) based on csstidy. If you want to create a linear or radial gradient as background or border, check our [CSS Gradient Generator](#).

Hey! You found this booklet interesting? Support Converting Colors with the new Membership Option!

The pro membership hides all ads, plus gives you double the colors in the color bucket, and more awesome pro features!

[Learn more, Memberships starting at \\$2.50/m!](#)

**Follow me
on Twitter!**

@ConvertingColor