

Converting Colors

XYZ(63.9117, 63.3857, 64.4033)

Have a look what the booklet for
XYZ(63.9117, 63.3857, 64.4033)
contains.

XYZ(63.8935, 63.4229, 64.1326)	3
<i>Conversions</i>	4
<i>Details</i>	6
<i>Harmonies</i>	12
<i>Previews</i>	24
<i>Color Blindness Simulation</i>	28
<i>CSS Examples</i>	31

Color

**XYZ(63.8935, 63.4229,
64.1326)**

Conversions

Conversions Part 1

Format	Color
Hex	E4CBC9
RGB	228, 203, 201
RGB Percent	89%, 80%, 79%
CMY	0.1059, 0.2039, 0.2118
CMYK	0.00, 0.11, 0.12, 0.11
HSL	4°, 33%, 84%
HSV	4°, 12%, 89%
XYZ	63.8935, 63.4229, 64.1326
YIQ	210.2470, 15.5420, 4.6780

Conversions

Conversions Part 2

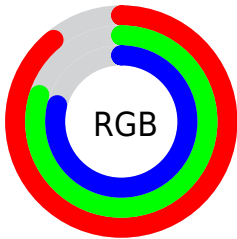
Format	Color
R _Y B	228, 203, 201
Decimal	14994377
CIE Lab	83.66, 8.41, 4.19
CIE LCh	84, 9.398, 26.447
Yxy	63.4229, 0.3337, 0.3313
Android (android.graphics.Color)	4293184457 (0xFFE4CBC9)
YUV	210.2470, -4.5588, 15.5694
Hunter-Lab	79.6385, 3.8421, 8.0009

Details

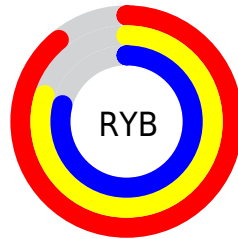
The XYZ color **63.8935, 63.4229, 64.1326** is a light color, and the websafe version is hex **CCCCCC**. A complement of this color would be **65.2871, 72.4103, 83.9352**, and the grayscale version is **61.4441, 64.6440, 70.3973**.

A 20% lighter version of the original color is **95.0500, 100.0000, 108.9000**, and **33.0272, 32.3721, 32.1115** is the 20% darker color. If you saturate the color by 10%, you get **56.7584, 53.1306, 49.4893**, and if you desaturate by 10%, it is **72.1090, 75.2374, 81.1017**.

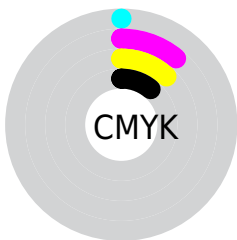
Distribution



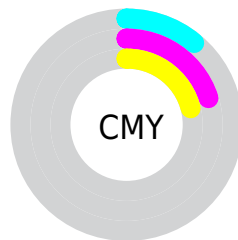
- Red (89%)
- Green (80%)
- Blue (79%)



- Red (89%)
- Yellow (80%)
- Blue (79%)



- Cyan (0%)
- Magenta (11%)
- Yellow (12%)
- Black (11%)



- Cyan (11%)
- Magenta (20%)
- Yellow (21%)

Brightness & Saturation Gradients

These gradients show how the XYZ color 63.8935, 63.4229, 64.1326 changes by changing the brightness by 10 percent. The first figure shows a shift by +10% for each color and the second figure -10%.

Similar to the brightness gradients but the following saturation gradients show a change of the XYZ color 63.8935, 63.4229, 64.1326 by changing the saturation by 10% instead.

63.8935, 63.4229,
64.1326

63.8935, 63.4229,
64.1326

428.4133,
437.1027, 457.8889

46.8258, 46.1834,
46.3112

109.5321,
109.7794, 112.4032

33.1053, 32.3906,
32.1410

138.8338,
139.6652, 143.6895

22.3668, 21.6600,
21.2035

172.9441,
174.5352, 180.3011

14.2447, 13.6073,
13.0802

212.2284,
214.7739, 222.6567

8.3739, 7.8480,
7.3524

257.0522,
260.7656, 271.1747

4.3889, 3.9979,
3.6017

307.7806,

1.9244, 1.6724,

312.8947, 326.2737

1.4095

364.7792,
371.5456, 388.3723

■ 0.5910, 0.4057,
0.1491

■ 0.0000, 0.0000,
0.0000

■ 63.8935, 63.4229,
64.1326

■ 63.8935, 63.4229,
64.1326

■ 56.7584, 53.1306,
49.4893

■ 72.1090, 75.2374,
81.1017

■ 50.6536, 44.2906,
37.0665

■ 81.4416, 88.6236,
100.4873

■ 45.5331, 36.8400,
26.7570

■ 85.8053, 95.2342,
108.4674

■ 41.3452, 30.7082,
18.4432

■ 38.0335, 25.8181,
11.9958

■ 35.5356, 22.0851,
7.2704

■ 33.7807, 19.4133,
4.1014

■ 32.6855, 17.6921,
2.2906

■ 32.1945, 16.8927,
1.5638

Harmonies

Analogous

The Analogous color harmony consists of three colors that are next to each other on the color wheel.



64.3169, 63.4229, 69.7613



63.8935, 63.4229, 64.1326



62.4947, 63.4229, 60.0384

Triad

The Triadic color harmony groups three colors that are evenly spaced from another and form a triangle on the color wheel.



63.8935, 63.4229, 64.1326



57.0444, 63.4229, 62.9819



60.0367, 63.4229, 80.9935

Complementary

The Complementary color scheme is a pair of colors which are on the opposite of each other on the color wheel.



63.8935, 63.4229, 64.1326



65.2871, 72.4103, 83.9352

Split Complementary

Split-complementary colors differ from the complementary color scheme. The scheme consists of three colors, the original color and two neighbors of the complement color.



58.1213, 63.4229, 78.9358



63.8935, 63.4229, 64.1326



56.4186, 63.4229, 68.3570

Square

The Square scheme is like the rectangle color scheme, but the four colors are evenly spaced on the color wheel.



63.8935, 63.4229, 64.1326



58.5367, 63.4229, 59.4011



56.8084, 63.4229, 74.2267



62.0607, 63.4229, 79.7059

Rectangle

The Rectangle color scheme consists of four colors that form a rectangle on the color wheel.



63.8935, 63.4229, 64.1326



61.2134, 63.4229, 58.6174



56.8084, 63.4229, 74.2267



59.3592, 63.4229, 80.6673

Sweetspot

The Sweet Spot groups the original color and five complimentary colors.



63.8953, 63.4257, 64.1339



90.5121, 93.4828, 99.4997



66.6373, 63.7701, 80.8930



19.1962, 19.7546, 20.9307



0.0000, 0.0000, 0.0000



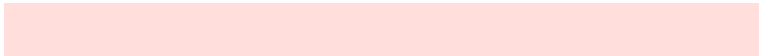
20.3446, 21.4041, 23.3091

Same Dimension

The Same Dimension uses a secret algorithm to generate beautiful new colors.



63.8953, 63.4257, 64.1339



80.1737, 78.6062, 78.1720



67.1712, 69.9775, 65.2259



14.4625, 14.5389, 14.9485



18.6222, 9.8185, 0.9137



1.4063, 0.7860, 0.0776

Inverse Universe

The Inverse Universe completely reimagines the original color for something new.



65.2871, 72.4103, 83.9352



82.2742, 92.1676, 108.0616



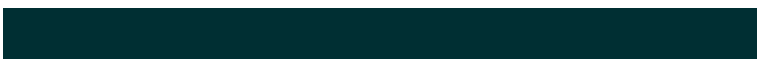
61.8107, 65.4576, 82.7764



14.7111, 16.1436, 18.4850



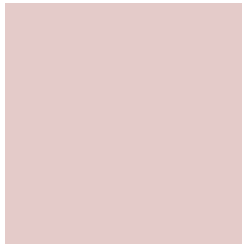
21.5866, 30.2354, 47.0814



1.6227, 2.2892, 3.4883

Previews

White Background



This preview shows how the XYZ color 63.8935, 63.4229, 64.1326 looks on a white background.

Color Contrast Check

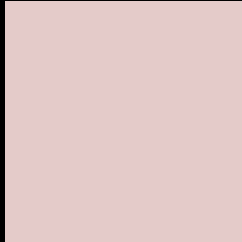
Large Text (above 18pt) WCAG AA × Fail

Any Text WCAG AA × Fail

Large Text (above 18pt) WCAG AAA × Fail

Any Text WCAG AAA × Fail

Black Background



This preview shows how the XYZ color 63.8935, 63.4229, 64.1326 looks on a black background.

Color Contrast Check

Large Text (above 18pt) WCAG AA ✓ Pass

Any Text WCAG AA ✓ Pass

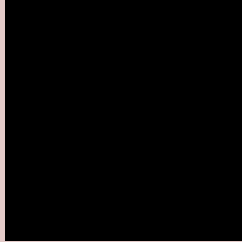
Large Text (above 18pt) WCAG AAA ✓ Pass

Any Text WCAG AAA ✓ Pass

If you want to check with other color combinations, try the [Color Contrast Checker](#).

XYZ 63.8935, 63.4229, 64.1326

Background



This preview shows how black text looks on a background with the XYZ color 63.8935, 63.4229, 64.1326.



This preview shows how white text looks on a background with the XYZ color 63.8935, 63.4229,

Color Blindness Simulation

Color vision deficiency is a very complex topic, and I could not describe the different causes any better than Wikipedia does, so if you want to learn more, you should check out their [article about color blindness](#).

Dichromacy



Original Color

63.8935, 63.4229, 64.1326

Protanopia

60.8955, 63.6175, 66.1966

Deuteranopia

64.9419, 63.6139, 64.1142



Tritanopia

65.9144, 63.5542, 73.7589

Trichromacy



Original Color

63.8935, 63.4229, 64.1326

Protanomaly

61.7642, 63.3598, 65.4743

Deuteranomaly

64.6181, 63.4470, 64.0991

Tritanomaly

65.1915, 63.6022, 70.4685

Monochromacy



Original Color

63.8935, 63.4229, 64.1326

Achromatopsia

61.2578, 64.4480, 70.1838

Achromatomaly

62.1906, 63.8824, 68.0842

CSS Examples

Text

The CSS property to change the color of the text to XYZ 63.8935, 63.4229, 64.1326 is called "color". The color property can be set on classes, ids or directly on the HTML element.

This example shows how text in the color `rgb(228, 203, 201)` looks like.

```
.text, #text, p{  
    color:rgb(228, 203, 201)  
}
```

If you want to add a text shadow in that color use the text-shadow property, you can generate a text shadow directly with our [CSS Text Shadow Generator](#).

Here you see how black text with a 4 pixel rgb(228, 203, 201) colored shadow looks like.

```
.shadow{ text-shadow: 4px 4px 2px rgb(228, 203, 201) }
```

Border

The CSS property to change the border of an element to XYZ 63.8935, 63.4229, 64.1326 is called "border". The border property can be set on classes, ids or directly on the HTML element.

This example shows the color as border, it can be applied via the CSS property "border" or "border-color".

```
.border, #border, table{ border:4px solid rgb(228, 203, 201) }
```


If only the border color should be changed use the property border-color.

```
.border{ border-color:rgb(228, 203, 201) }
```

If you want to add a box shadow in that color use:

Here you see how a box with a 4 pixel rgb(228, 203, 201) colored shadow looks like.

```
.boxshadow{ -moz-box-shadow:4px 4px 4px  
4px rgb(228, 203, 201); -webkit-box-  
shadow:4px 4px 4px 4px rgb(228, 203, 201);  
box-shadow:4px 4px 4px 4px rgb(228, 203,  
201) }
```

Background

The CSS property to change the background color of an element to XYZ 63.8935, 63.4229, 64.1326 is called "background". The background property can be set on classes, ids or directly on the HTML element.

```
.background, #background, body{  
background: rgb(228, 203, 201) }
```

If only the background color should be changed can be used:

```
.background{ background-color: rgb(228,  
203, 201) }
```

This example shows the color as background, it is applied via the CSS property "background".

To optimize and compress your CSS code, you can use our [online CSS compressor and optimizer](#) based on csstidy. If you want to create a linear or radial gradient as background or border, check our [CSS Gradient Generator](#).

Hey! You found this booklet interesting? Support Converting Colors with the new Membership Option!

The pro membership hides all ads, plus gives you double the colors in the color bucket, and more awesome pro features!

[Learn more, Memberships starting at \\$2.50/m!](#)

**Follow me
on Twitter!**

@ConvertingColor