

Converting Colors

XYZ(63.9776, 64.2979, 67.4421)

Have a look what the booklet for
XYZ(63.9776, 64.2979, 67.4421)
contains.

XYZ(63.9524, 64.4461, 67.4612)	3
<i>Conversions</i>	4
<i>Details</i>	6
<i>Harmonies</i>	12
<i>Previews</i>	24
<i>Color Blindness Simulation</i>	28
<i>CSS Examples</i>	31

Color

**XYZ(63.9524, 64.4461,
67.4612)**

Conversions

Conversions Part 1

Format	Color
Hex	E0CECE
RGB	224, 206, 206
RGB Percent	88%, 81%, 81%
CMY	0.1216, 0.1921, 0.1922
CMYK	0.00, 0.08, 0.08, 0.12
HSL	0°, 23%, 84%
HSV	0°, 8%, 88%
XYZ	63.9524, 64.4461, 67.4612
YIQ	211.3820, 10.7280, 3.8160

Conversions

Conversions Part 2

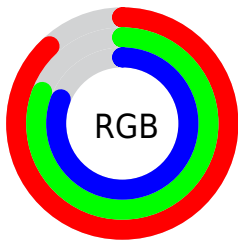
Format	Color
R_{YB}	224, 206, 206
Decimal	14733006
CIE _{Lab}	84.20, 6.25, 2.25
CIE _{LCh}	84, 6.644, 19.820
Yxy	64.4461, 0.3265, 0.3290
Android (android.graphics.Color)	4292923086 (0xFFE0CECE)
YUV	211.3820, -2.6533, 11.0660
Hunter-Lab	80.2783, 1.7120, 6.3710

Details

The XYZ color **63.9524, 64.4461, 67.4612** is a light color, and the websafe version is hex **CCCCCC**. A complement of this color would be **65.5637, 71.8139, 80.9279**, and the grayscale version is **62.1830, 65.4213, 71.2438**.

A 20% lighter version of the original color is **95.0500, 100.0000, 108.9000**, and **33.2579, 33.1585, 34.3531** is the 20% darker color. If you saturate the color by 10%, you get **56.4104, 53.4106, 52.4647**, and if you desaturate by 10%, it is **72.6541, 77.1788, 84.7591**.

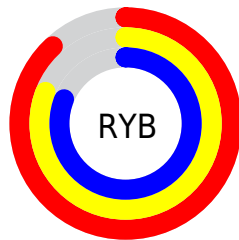
Distribution



Red (88%)

Green (81%)

Blue (81%)



Red (88%)

Yellow (81%)

Blue (81%)

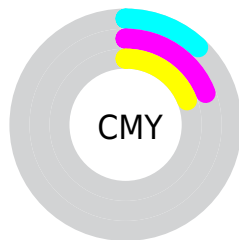


Cyan (0%)

Magenta (8%)

Yellow (8%)

Black (12%)



Cyan (12%)

Magenta (19%)

Yellow (19%)

Brightness & Saturation Gradients

These gradients show how the XYZ color 63.9524, 64.4461, 67.4612 changes by changing the brightness by 10 percent. The first figure shows a shift by +10% for each color and the second figure -10%.

Similar to the brightness gradients but the following saturation gradients show a change of the XYZ color 63.9524, 64.4461, 67.4612 by changing the saturation by 10% instead.

63.9524, 64.4461,
67.4612

63.9524, 64.4461,
67.4612

428.6227,
440.7988, 470.1308

46.8737, 47.0121,
48.9956

109.6165,
111.2531, 117.2279

33.1433, 33.0452,
34.2504

138.9326,
141.3950, 149.3661

22.3960, 22.1611,
22.8071

173.0585,
176.5415, 186.8989

14.2664, 13.9753,
14.2472

212.3595,
217.0772, 230.2448

8.3891, 8.1035,
8.1521

257.2011,
263.3863, 279.8224

4.3988, 4.1612,
4.1032

307.9486,

1.9301, 1.7642,

315.8534, 336.0503

1.6822

364.9673,
374.8628, 399.3469

■ 0.5943, 0.4647,
0.3485

■ 0.0000, 0.0000,
0.0000

■ 63.9524, 64.4461,
67.4612

■ 63.9524, 64.4461,
67.4612

■ 56.4104, 53.4106,
52.4647

■ 72.6541, 77.1788,
84.7591

■ 49.9740, 43.9925,
39.6688

■ 82.5558, 91.6671,
104.4454

■ 44.5930, 36.1186,
28.9712

■ 84.5509, 94.5875,
108.4086

■ 40.2110, 29.7064,
20.2601

■ 36.7665, 24.6660,
13.4131

■ 34.1913, 20.8975,
8.2943

■ 32.4078, 18.2875,
4.7497

■ 31.3247, 16.7023,
2.5977

■ 30.8133, 15.9537,
1.5817

Harmonies

Analogous

The Analogous color harmony consists of three colors that are next to each other on the color wheel.



64.0790, 64.4461, 71.6116



63.9524, 64.4461, 67.4612



63.0963, 64.4461, 64.1649

Triad

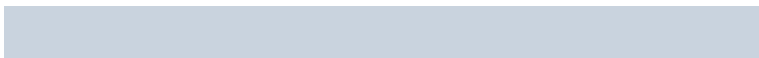
The Triadic color harmony groups three colors that are evenly spaced from another and form a triangle on the color wheel.



63.9524, 64.4461, 67.4612



59.1194, 64.4461, 65.0755



60.7558, 64.4461, 78.4455

Complementary

The Complementary color scheme is a pair of colors which are on the opposite of each other on the color wheel.



63.9524, 64.4461, 67.4612



65.5637, 71.8139, 80.9279

Split Complementary

Split-complementary colors differ from the complementary color scheme. The scheme consists of three colors, the original color and two neighbors of the complement color.



59.4481, 64.4461, 76.5404



63.9524, 64.4461, 67.4612



58.5134, 64.4461, 68.7495

Square

The Square scheme is like the rectangle color scheme, but the four colors are evenly spaced on the color wheel.



63.9524, 64.4461, 67.4612



60.3005, 64.4461, 62.8261



58.6328, 64.4461, 72.9521



62.2177, 64.4461, 78.0668

Rectangle

The Rectangle color scheme consists of four colors that form a rectangle on the color wheel.



63.9524, 64.4461, 67.4612



62.2345, 64.4461, 62.8423



58.6328, 64.4461, 72.9521



60.2840, 64.4461, 78.0481

Sweetspot

The Sweet Spot groups the original color and five complimentary colors.



63.9542, 64.4489, 67.4626



92.6345, 96.4656, 104.0976



66.2673, 65.3727, 79.6475



19.8529, 20.6846, 22.3315



0.0000, 0.0000, 0.0000



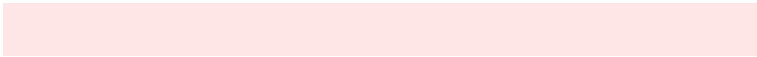
20.3446, 21.4041, 23.3091

Same Dimension

The Same Dimension uses a secret algorithm to generate beautiful new colors.



63.9542, 64.4489, 67.4626



83.6121, 83.2638, 86.1600



66.1824, 68.9054, 68.2053



13.7075, 13.7010, 14.2289



17.8936, 9.2251, 0.8375



1.2404, 0.6396, 0.0581

Inverse Universe

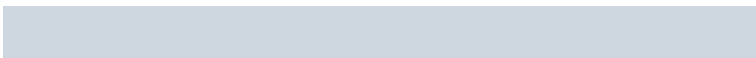
The Inverse Universe completely reimagines the original color for something new.



65.5637, 71.8139, 80.9279



86.2812, 95.4770, 108.4891



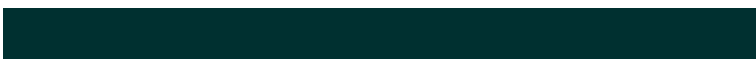
63.2095, 67.1055, 80.1431



14.1164, 15.5719, 17.6493



23.3399, 34.1493, 46.4097



1.6179, 2.3672, 3.2169

Previews

White Background



This preview shows how the XYZ color 63.9524, 64.4461, 67.4612 looks on a white background.

Color Contrast Check

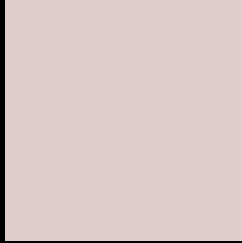
Large Text (above 18pt) WCAG AA × Fail

Any Text WCAG AA × Fail

Large Text (above 18pt) WCAG AAA × Fail

Any Text WCAG AAA × Fail

Black Background



This preview shows how the XYZ color 63.9524, 64.4461, 67.4612 looks on a black background.

Color Contrast Check

Large Text (above 18pt) WCAG AA ✓ Pass

Any Text WCAG AA ✓ Pass

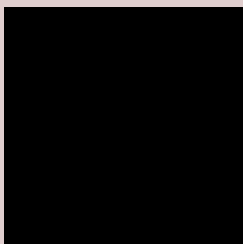
Large Text (above 18pt) WCAG AAA ✓ Pass

Any Text WCAG AAA ✓ Pass

If you want to check with other color combinations, try the [Color Contrast Checker](#).

XYZ 63.9524, 64.4461, 67.4612

Background



This preview shows how black text looks on a background with the XYZ color 63.9524, 64.4461, 67.4612.



This preview shows how white text looks on a background with the XYZ color 63.9524, 64.4461,

67.4612.

Color Blindness Simulation

Color vision deficiency is a very complex topic, and I could not describe the different causes any better than Wikipedia does, so if you want to learn more, you should check out their [article about color blindness](#).

Dichromacy



Original Color

63.9524, 64.4461, 67.4612

Protanopia

61.9172, 64.4511, 68.8514

Deuteranopia

65.8971, 64.3727, 67.9835



Tritanopia

65.8752, 64.5218, 76.6921

Trichromacy



Original Color

63.9524, 64.4461, 67.4612

Protanomaly

62.7318, 64.5222, 68.1792

Deuteranomaly

65.1684, 64.3487, 68.0173

Tritanomaly

65.1484, 64.5765, 73.3208

Monochromacy



Original Color

63.9524, 64.4461, 67.4612

Achromatopsia

61.9161, 65.1406, 70.9381

Achromatomaly

62.6280, 64.8033, 69.5290

CSS Examples

Text

The CSS property to change the color of the text to XYZ 63.9524, 64.4461, 67.4612 is called "color". The color property can be set on classes, ids or directly on the HTML element.

This example shows how text in the color `rgb(224, 206, 206)` looks like.

```
.text, #text, p{  
    color:rgb(224, 206, 206)  
}
```

If you want to add a text shadow in that color use the text-shadow property, you can generate a text shadow directly with our [CSS Text Shadow Generator](#).

Here you see how black text with a 4 pixel rgb(224, 206, 206) colored shadow looks like.

```
.shadow{ text-shadow: 4px 4px 2px rgb(224, 206, 206) }
```

Border

The CSS property to change the border of an element to XYZ 63.9524, 64.4461, 67.4612 is called "border". The border property can be set on classes, ids or directly on the HTML element.

This example shows the color as border, it can be applied via the CSS property "border" or "border-color".

```
.border, #border, table{ border:4px solid rgb(224, 206, 206) }
```


If only the border color should be changed use the property `border-color`.

```
.border{ border-color:rgb(224, 206, 206) }
```

If you want to add a box shadow in that color use:

Here you see how a box with a 4 pixel `rgb(224, 206, 206)` colored shadow looks like.

```
.boxshadow{ -moz-box-shadow:4px 4px 4px  
4px rgb(224, 206, 206); -webkit-box-  
shadow:4px 4px 4px 4px rgb(224, 206, 206);  
box-shadow:4px 4px 4px 4px rgb(224, 206,  
206) }
```

Background

The CSS property to change the background color of an element to XYZ 63.9524, 64.4461, 67.4612 is called "background". The background property can be set on classes, ids or directly on the HTML element.

```
.background, #background, body{  
background: rgb(224, 206, 206) }
```

If only the background color should be changed can be used:

```
.background{ background-color: rgb(224,  
206, 206) }
```

This example shows the color as background, it is applied via the CSS property "background".

To optimize and compress your CSS code, you can use our [online CSS compressor and optimizer](#) based on csstidy. If you want to create a linear or radial gradient as background or border, check our [CSS Gradient Generator](#).

Hey! You found this booklet interesting? Support Converting Colors with the new Membership Option!

The pro membership hides all ads, plus gives you double the colors in the color bucket, and more awesome pro features!

[Learn more, Memberships starting at \\$2.50/m!](#)

**Follow me
on Twitter!**

@ConvertingColor