

Converting Colors

XYZ(63.9976, 55.0770, 30.2800)

Have a look what the booklet for
XYZ(63.9976, 55.0770, 30.2800)
contains.

XYZ(60.7492, 53.2814, 30.0042)	3
<i>Conversions</i>	4
<i>Details</i>	6
<i>Harmonies</i>	12
<i>Previews</i>	24
<i>Color Blindness Simulation</i>	28
<i>CSS Examples</i>	31

Color

**XYZ(60.7492, 53.2814,
30.0042)**

Conversions

Conversions Part 1

Format	Color
Hex	FFAE87
RGB	255, 174, 135
RGB Percent	100%, 68%, 53%
CMY	0.0000, 0.3176, 0.4706
CMYK	0.00, 0.32, 0.47, 0.00
HSL	20°, 100%, 76%
HSV	20°, 47%, 100%
XYZ	60.7492, 53.2814, 30.0042
YIQ	193.7730, 60.7950, 5.0430

Conversions

Conversions Part 2

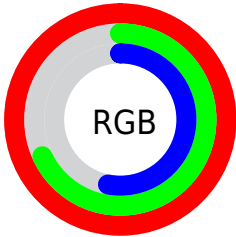
Format	Color
RYB	255, 193, 135
Decimal	16756359
CIELab	78.04, 25.35, 31.99
CIELCh	78, 40.816, 51.610
Yxy	53.2814, 0.4218, 0.3699
Android (android.graphics.Color)	4294946439 (0xFFFFAE87)
YUV	193.7730, -28.9751, 53.6961
Hunter-Lab	72.9941, 20.8166, 26.7247

Details

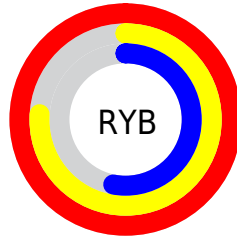
The XYZ color **60.7492, 53.2814, 30.0042** is a light color, and the websafe version is hex **FF9966**. A complement of this color would be **52.5963, 61.4798, 103.7020**, and the grayscale version is **51.2859, 53.9568, 58.7589**.

A 20% lighter version of the original color is **78.7221, 81.5278, 59.7314**, and **30.9827, 25.9327, 11.9669** is the 20% darker color. If you saturate the color by 10%, you get **56.0497, 46.4198, 20.6158**, and if you desaturate by 10%, it is **66.3074, 61.1724, 41.8009**.

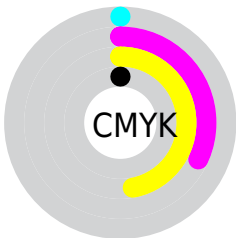
Distribution



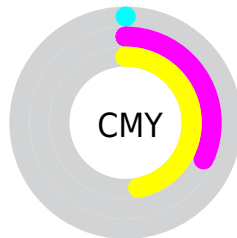
- Red (100%)
- Green (68%)
- Blue (53%)



- Red (100%)
- Yellow (76%)
- Blue (53%)



- Cyan (0%)
- Magenta (32%)
- Yellow (47%)
- Black (0%)




- Cyan (0%)
- Magenta (32%)
- Yellow (47%)

Brightness & Saturation Gradients


These gradients show how the XYZ color 60.7492, 53.2814, 30.0042 changes by changing the brightness by 10 percent. The first figure shows a shift by +10% for each color and the second figure -10%.


Similar to the brightness gradients but the following saturation gradients show a change of the XYZ color 60.7492, 53.2814, 30.0042 by changing the saturation by 10% instead.


 60.7492, 53.2814,
30.0042


 60.7492, 53.2814,
30.0042


417.1444,
399.3638, 316.1319


 44.2746, 38.0275,
19.5897


 105.0159, 95.0183,
60.7299

 31.0853, 26.0040,
11.9160

 133.5386,
122.2701, 81.8782

 20.8159, 16.8266,
6.5647


 166.8082,
154.2899, 107.4415

 13.1012, 10.1110,
3.1171

205.1898,
191.4622, 137.8383

 7.5758, 5.4726,
1.1547

249.0489,
234.1713, 173.4872

 3.8742, 2.5271,
0.0000

298.7508,

 1.6312, 0.8902,

282.8017, 214.8068

0.0000

354.6608,
337.7377, 262.2155

■ 0.4126, 0.0000,
0.0000

■ 0.0000, 0.0000,
0.0000

■ 60.7492, 53.2814,
30.0042

■ 60.7492, 53.2814,
30.0042

■ 56.0497, 46.4198,
20.6158

■ 66.3074, 61.1724,
41.8009

■ 52.1576, 40.5350,
13.4629

■ 72.7636, 70.1266,
56.1560

■ 49.0219, 35.5815,
8.3544

■ 80.1594, 80.1857,
73.2107

■ 46.5825, 31.5059,
5.0651

■ 88.5324, 91.3869,
93.0952

■ 44.7666, 28.2478,
3.3083

95.0498, 99.9999,
108.9000

■ 44.3245, 27.4292,
2.9582

Harmonies

Analogous

The Analogous color harmony consists of three colors that are next to each other on the color wheel.



66.2383, 53.2814, 43.3288



60.7492, 53.2814, 30.0042



52.9076, 53.2814, 24.5690

Triad

The Triadic color harmony groups three colors that are evenly spaced from another and form a triangle on the color wheel.



60.7492, 53.2814, 30.0042



36.9656, 53.2814, 51.8533



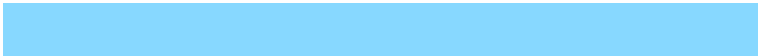
56.4879, 53.2814, 109.0245

Complementary

The Complementary color scheme is a pair of colors which are on the opposite of each other on the color wheel.



60.7492, 53.2814, 30.0042



52.5963, 61.4798, 103.7020

Split Complementary

Split-complementary colors differ from the complementary color scheme. The scheme consists of three colors, the original color and two neighbors of the complement color.



48.4427, 53.2814, 113.0483



60.7492, 53.2814, 30.0042



37.7095, 53.2814, 75.6918

Square

The Square scheme is like the rectangle color scheme, but the four colors are evenly spaced on the color wheel.



60.7492, 53.2814, 30.0042



39.5732, 53.2814, 34.8379



41.7237, 53.2814, 99.5758



63.6042, 53.2814, 89.6979

Rectangle

The Rectangle color scheme consists of four colors that form a rectangle on the color wheel.



60.7492, 53.2814, 30.0042



47.6257, 53.2814, 24.8108



41.7237, 53.2814, 99.5758



53.7838, 53.2814, 112.3829

Sweetspot

The Sweet Spot groups the original color and five complimentary colors.



60.7505, 53.2840, 30.0052



82.6149, 83.4885, 78.9857



62.4285, 43.5981, 70.7707



17.3102, 17.3689, 16.0282



0.0000, 0.0000, 0.0000



20.3446, 21.4041, 23.3091

Same Dimension

The Same Dimension uses a secret algorithm to generate beautiful new colors.



60.7505, 53.2840, 30.0052



56.5082, 47.0991, 21.5004



74.7520, 81.2870, 34.6724



18.4915, 18.9511, 18.8277



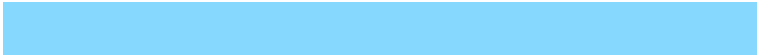
23.2804, 14.5721, 1.5857



2.3612, 1.6078, 0.1859

Inverse Universe

The Inverse Universe completely reimagines the original color for something new.



52.5963, 61.4798, 103.7020



47.4558, 56.0744, 102.9300



40.0991, 36.4854, 99.5363



18.0280, 19.4276, 23.0497



17.2929, 19.4953, 52.2861



1.7832, 2.0971, 5.1241

Previews

White Background



This preview shows how the XYZ color 60.7492, 53.2814, 30.0042 looks on a white background.

Color Contrast Check

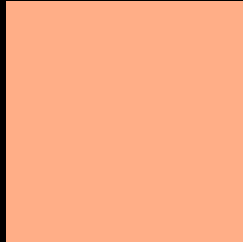
Large Text (above 18pt) WCAG AA × Fail

Any Text WCAG AA × Fail

Large Text (above 18pt) WCAG AAA × Fail

Any Text WCAG AAA × Fail

Black Background



This preview shows how the XYZ color 60.7492, 53.2814, 30.0042 looks on a black background.

Color Contrast Check

Large Text (above 18pt) WCAG AA ✓ Pass

Any Text WCAG AA ✓ Pass

Large Text (above 18pt) WCAG AAA ✓ Pass

Any Text WCAG AAA ✓ Pass

If you want to check with other color combinations, try the [Color Contrast Checker](#).

XYZ 60.7492, 53.2814, 30.0042

Background



This preview shows how black text looks on a background with the XYZ color 60.7492, 53.2814, 30.0042.



This preview shows how white text looks on a background with the XYZ color 60.7492, 53.2814,

Color Blindness Simulation

Color vision deficiency is a very complex topic, and I could not describe the different causes any better than Wikipedia does, so if you want to learn more, you should check out their [article about color blindness](#).

Dichromacy



Original Color

60.7492, 53.2814, 30.0042

Protanopia

49.7600, 53.3885, 33.6690

Deuteranopia

54.5376, 53.3803, 29.6193



Tritanopia

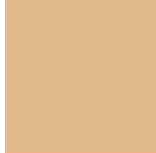
63.9552, 53.3456, 50.6420

Trichromacy



Original Color

60.7492, 53.2814, 30.0042



Protanomaly

53.0330, 52.8586, 32.2185



Deuteranomaly

56.7621, 53.2942, 29.8494



Tritanomaly

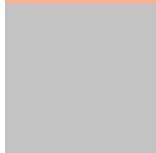
62.5038, 53.0662, 42.0704

Monochromacy



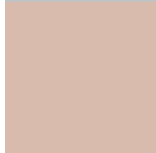
Original Color

60.7492, 53.2814, 30.0042



Achromatopsia

51.2775, 53.9479, 58.7493



Achromatomaly

53.6321, 53.1567, 46.9687

CSS Examples

Text

The CSS property to change the color of the text to XYZ 60.7492, 53.2814, 30.0042 is called "color". The color property can be set on classes, ids or directly on the HTML element.

This example shows how text in the color `rgb(255, 174, 135)` looks like.

```
.text, #text, p{  
    color:rgb(255, 174, 135)  
}
```

If you want to add a text shadow in that color use the text-shadow property, you can generate a text shadow directly with our [CSS Text Shadow Generator](#).

Here you see how black text with a 4 pixel rgb(255, 174, 135) colored shadow looks like.

```
.shadow{ text-shadow: 4px 4px 2px rgb(255, 174, 135) }
```

Border

The CSS property to change the border of an element to XYZ 60.7492, 53.2814, 30.0042 is called "border". The border property can be set on classes, ids or directly on the HTML element.

This example shows the color as border, it can be applied via the CSS property "border" or "border-color".

```
.border, #border, table{ border:4px solid rgb(255, 174, 135) }
```


If only the border color should be changed use the property border-color.

```
.border{ border-color:rgb(255, 174, 135) }
```

If you want to add a box shadow in that color use:

Here you see how a box with a 4 pixel rgb(255, 174, 135) colored shadow looks like.

```
.boxshadow{ -moz-box-shadow:4px 4px 4px  
4px rgb(255, 174, 135); -webkit-box-  
shadow:4px 4px 4px 4px rgb(255, 174, 135);  
box-shadow:4px 4px 4px 4px rgb(255, 174,  
135) }
```

Background

The CSS property to change the background color of an element to XYZ 60.7492, 53.2814, 30.0042 is called "background". The background property can be set on classes, ids or directly on the HTML element.

```
.background, #background, body{  
background: rgb(255, 174, 135) }
```

If only the background color should be changed can be used:

```
.background{ background-color: rgb(255,  
174, 135) }
```

This example shows the color as background, it is applied via the CSS property "background".

To optimize and compress your CSS code, you can use our [online CSS compressor and optimizer](#) based on csstidy. If you want to create a linear or radial gradient as background or border, check our [CSS Gradient Generator](#).

Hey! You found this booklet interesting? Support Converting Colors with the new Membership Option!

The pro membership hides all ads, plus gives you double the colors in the color bucket, and more awesome pro features!

[Learn more, Memberships starting at \\$2.50/m!](#)

**Follow me
on Twitter!**

@ConvertingColor