

Converting Colors

XYZ(64.0363, 63.5762, 66.1738)

Have a look what the booklet for
XYZ(64.0363, 63.5762, 66.1738)
contains.

XYZ(63.9336, 63.4024, 65.9950)	3
<i>Conversions</i>	4
<i>Details</i>	6
<i>Harmonies</i>	12
<i>Previews</i>	24
<i>Color Blindness Simulation</i>	28
<i>CSS Examples</i>	31

Color

**XYZ(63.9336, 63.4024,
65.9950)**

Conversions

Conversions Part 1

Format	Color
Hex	E3CBCC
RGB	227, 203, 204
RGB Percent	89%, 80%, 80%
CMY	0.1098, 0.2039, 0.2000
CMYK	0.00, 0.11, 0.10, 0.11
HSL	358°, 30%, 84%
HSV	358°, 11%, 89%
XYZ	63.9336, 63.4024, 65.9950
YIQ	210.2900, 13.9830, 5.3990

Conversions

Conversions Part 2

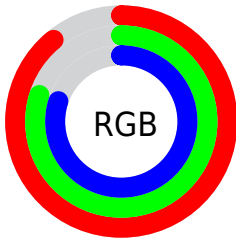
Format	Color
R _Y B	227, 203, 204
Decimal	14928844
CIE Lab	83.65, 8.55, 2.56
CIE LCh	84, 8.927, 16.662
Yxy	63.4024, 0.3307, 0.3279
Android (android.graphics.Color)	4293118924 (0xFFE3CBCC)
YUV	210.2900, -3.1010, 14.6547
Hunter-Lab	79.6256, 3.9777, 6.5974

Details

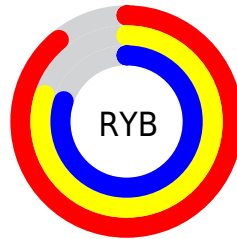
The XYZ color **63.9336, 63.4024, 65.9950** is a light color, and the websafe version is hex **CCCCCC**. A complement of this color would be **65.8276, 73.1273, 82.6006**, and the grayscale version is **61.4639, 64.6648, 70.4199**.

A 20% lighter version of the original color is **95.0500, 100.0000, 108.9000**, and **33.0471, 32.3548, 33.3575** is the 20% darker color. If you saturate the color by 10%, you get **56.5306, 52.4845, 51.5392**, and if you desaturate by 10%, it is **72.4897, 76.0415, 82.6353**.

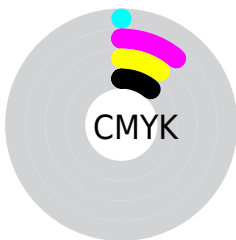
Distribution



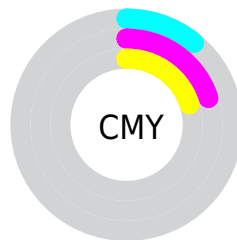
- Red (89%)
- Green (80%)
- Blue (80%)



- Red (89%)
- Yellow (80%)
- Blue (80%)



- Cyan (0%)
- Magenta (11%)
- Yellow (10%)
- Black (11%)



- Cyan (11%)
- Magenta (20%)
- Yellow (20%)

Brightness & Saturation Gradients

These gradients show how the XYZ color 63.9336, 63.4024, 65.9950 changes by changing the brightness by 10 percent. The first figure shows a shift by +10% for each color and the second figure -10%.

Similar to the brightness gradients but the following saturation gradients show a change of the XYZ color 63.9336, 63.4024, 65.9950 by changing the saturation by 10% instead.

63.9336, 63.4024,
65.9950

63.9336, 63.4024,
65.9950

428.5558,
437.0284, 464.7627

46.8584, 46.1668,
47.8119

109.5896,
109.7498, 115.1061

33.1312, 32.3775,
33.3190

138.9010,
139.6305, 146.8711

22.3867, 21.6500,
22.0978

173.0220,
174.4950, 184.0006

14.2595, 13.5999,
13.7298

212.3177,
214.7277, 226.9130

8.3843, 7.8430,
7.7964

257.1536,
260.7130, 276.0269

4.3957, 3.9946,
3.8790

307.8950,

1.9283, 1.6706,

312.8352, 331.7607

1.5592

364.9073,
371.4789, 394.5332

■ 0.5932, 0.4045,
0.2615

■ 0.0000, 0.0000,
0.0000

■ 63.9336, 63.4024,
65.9950

■ 63.9336, 63.4024,
65.9950

■ 56.5306, 52.4845,
51.5392

■ 72.4897, 76.0415,
82.6353

■ 50.2263, 43.2054,
39.1733

■ 82.2396, 90.4629,
101.5412

■ 44.9700, 35.4887,
28.8019

■ 85.4889, 95.0711,
108.4525

■ 40.7048, 29.2484,
20.3206

■ 37.3687, 24.3902,
13.6154

■ 34.8922, 20.8093,
8.5602

■ 33.1965, 18.3855,
5.0122

■ 32.1881, 16.9758,
2.8044

■ 31.7305, 16.3517,
1.7544

Harmonies

Analogous

The Analogous color harmony consists of three colors that are next to each other on the color wheel.



63.9923, 63.4024, 71.5467



63.9336, 63.4024, 65.9950



62.8776, 63.4024, 61.5004

Triad

The Triadic color harmony groups three colors that are evenly spaced from another and form a triangle on the color wheel.



63.9336, 63.4024, 65.9950



57.5706, 63.4024, 61.9099



59.3995, 63.4024, 80.0425

Complementary

The Complementary color scheme is a pair of colors which are on the opposite of each other on the color wheel.



63.9336, 63.4024, 65.9950



65.8276, 73.1273, 82.6006

Split Complementary

Split-complementary colors differ from the complementary color scheme. The scheme consists of three colors, the original color and two neighbors of the complement color.



57.7201, 63.4024, 77.1599



63.9336, 63.4024, 65.9950



56.6797, 63.4024, 66.5817

Square

The Square scheme is like the rectangle color scheme, but the four colors are evenly spaced on the color wheel.



63.9336, 63.4024, 65.9950



59.1912, 63.4024, 59.2306



56.7339, 63.4024, 72.1658



61.3458, 63.4024, 79.8644

Rectangle

The Rectangle color scheme consists of four colors that form a rectangle on the color wheel.



63.9336, 63.4024, 65.9950



61.7628, 63.4024, 59.6185



56.7339, 63.4024, 72.1658



58.7859, 63.4024, 79.3930

Sweetspot

The Sweet Spot groups the original color and five complimentary colors.



63.9354, 63.4052, 65.9964



91.4996, 94.7525, 102.0033



66.5242, 64.3972, 81.5975



19.3867, 19.9884, 21.4481



0.0000, 0.0000, 0.0000



20.3446, 21.4041, 23.3091

Same Dimension

The Same Dimension uses a secret algorithm to generate beautiful new colors.



63.9354, 63.4052, 65.9964



80.6712, 78.7628, 80.9229



66.4559, 68.6368, 66.2489



14.4011, 14.3776, 15.0467



18.5156, 9.5405, 1.0784



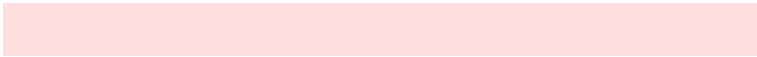
1.3768, 0.7084, 0.1250

Inverse Universe

The Inverse Universe completely reimagines the original color for something new.



63.9354, 63.4052, 65.9964



80.6712, 78.7628, 80.9229



63.1033, 67.4592, 82.3689



14.4011, 14.3776, 15.0467



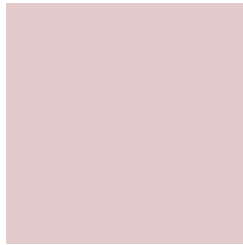
18.5156, 9.5405, 1.0784



1.3768, 0.7084, 0.1250

Previews

White Background



This preview shows how the XYZ color 63.9336, 63.4024, 65.9950 looks on a white background.

Color Contrast Check

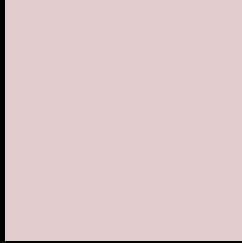
Large Text (above 18pt) WCAG AA × Fail

Any Text WCAG AA × Fail

Large Text (above 18pt) WCAG AAA × Fail

Any Text WCAG AAA × Fail

Black Background



This preview shows how the XYZ color 63.9336, 63.4024, 65.9950 looks on a black background.

Color Contrast Check

Large Text (above 18pt) WCAG AA ✓ Pass

Any Text WCAG AA ✓ Pass

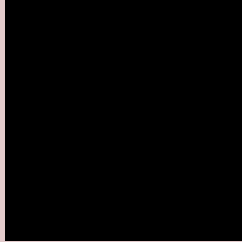
Large Text (above 18pt) WCAG AAA ✓ Pass

Any Text WCAG AAA ✓ Pass

If you want to check with other color combinations, try the [Color Contrast Checker](#).

XYZ 63.9336, 63.4024, 65.9950

Background



This preview shows how black text looks on a background with the XYZ color 63.9336, 63.4024, 65.9950.



This preview shows how white text looks on a background with the XYZ color 63.9336, 63.4024,

65.9950.

Color Blindness Simulation

Color vision deficiency is a very complex topic, and I could not describe the different causes any better than Wikipedia does, so if you want to learn more, you should check out their [article about color blindness](#).

Dichromacy



Original Color

63.9336, 63.4024, 65.9950

Protanopia

61.2589, 63.7629, 68.1103

Deuteranopia

64.6527, 63.4237, 65.9612



Tritanopia

65.7241, 63.4411, 74.4270

Trichromacy



Original Color

63.9336, 63.4024, 65.9950

Protanomaly

62.1253, 63.5043, 67.3757

Deuteranomaly

64.3327, 63.2587, 65.9462

Tritanomaly

64.9991, 63.4885, 71.1160

Monochromacy



Original Color

63.9336, 63.4024, 65.9950

Achromatopsia

61.2578, 64.4480, 70.1838

Achromatomaly

62.0169, 63.7786, 68.7164

CSS Examples

Text

The CSS property to change the color of the text to XYZ 63.9336, 63.4024, 65.9950 is called "color". The color property can be set on classes, ids or directly on the HTML element.

This example shows how text in the color rgb(227, 203, 204) looks like.

```
.text, #text, p{  
    color:rgb(227, 203, 204)  
}
```

If you want to add a text shadow in that color use the text-shadow property, you can generate a text shadow directly with our [CSS Text Shadow Generator](#).

Here you see how black text with a 4 pixel rgb(227, 203, 204) colored shadow looks like.

```
.shadow{ text-shadow: 4px 4px 2px rgb(227, 203, 204) }
```

Border

The CSS property to change the border of an element to XYZ 63.9336, 63.4024, 65.9950 is called "border". The border property can be set on classes, ids or directly on the HTML element.

This example shows the color as border, it can be applied via the CSS property "border" or "border-color".

```
.border, #border, table{ border:4px solid rgb(227, 203, 204) }
```


If only the border color should be changed use the property border-color.

```
.border{ border-color:rgb(227, 203, 204) }
```

If you want to add a box shadow in that color use:

Here you see how a box with a 4 pixel rgb(227, 203, 204) colored shadow looks like.

```
.boxshadow{ -moz-box-shadow:4px 4px 4px  
4px rgb(227, 203, 204); -webkit-box-  
shadow:4px 4px 4px 4px rgb(227, 203, 204);  
box-shadow:4px 4px 4px 4px rgb(227, 203,  
204) }
```

Background

The CSS property to change the background color of an element to XYZ 63.9336, 63.4024, 65.9950 is called "background". The background property can be set on classes, ids or directly on the HTML element.

```
.background, #background, body{  
background: rgb(227, 203, 204) }
```

If only the background color should be changed can be used:

```
.background{ background-color: rgb(227,  
203, 204) }
```

This example shows the color as background, it is applied via the CSS property "background".

To optimize and compress your CSS code, you can use our [online CSS compressor and optimizer](#) based on csstidy. If you want to create a linear or radial gradient as background or border, check our [CSS Gradient Generator](#).

Hey! You found this booklet interesting? Support Converting Colors with the new Membership Option!

The pro membership hides all ads, plus gives you double the colors in the color bucket, and more awesome pro features!

[Learn more, Memberships starting at \\$2.50/m!](#)

**Follow me
on Twitter!**

@ConvertingColor