

Converting Colors

XYZ(64.0990, 63.9210, 62.3858)

Have a look what the booklet for
XYZ(64.0990, 63.9210, 62.3858)
contains.

XYZ(64.0990, 63.9210, 62.3857)	3
<i>Conversions</i>	4
<i>Details</i>	6
<i>Harmonies</i>	12
<i>Previews</i>	24
<i>Color Blindness Simulation</i>	28
<i>CSS Examples</i>	31

Color

**XYZ(64.0990, 63.9210,
62.3857)**

Conversions

Conversions Part 1

Format	Color
Hex	E5CCC6
RGB	229, 204, 198
RGB Percent	90%, 80%, 78%
CMY	0.1020, 0.2000, 0.2235
CMYK	0.00, 0.11, 0.14, 0.10
HSL	12°, 37%, 84%
HSV	12°, 14%, 90%
XYZ	64.0990, 63.9210, 62.3857
YIQ	210.7910, 16.8260, 3.4340

Conversions

Conversions Part 2

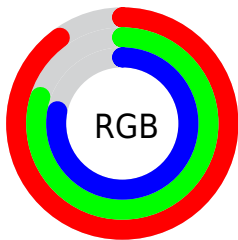
Format	Color
R _Y B	229, 205, 198
Decimal	15060166
CIE Lab	83.92, 7.76, 6.17
CIE LCh	84, 9.915, 38.484
Yxy	63.9210, 0.3366, 0.3357
Android (android.graphics.Color)	4293250246 (0xFFE5CCC6)
YUV	210.7910, -6.3060, 15.9693
Hunter-Lab	79.9506, 3.1957, 9.7013

Details

The XYZ color **64.0990, 63.9210, 62.3857** is a light color, and the websafe version is hex **CCCCCC**. A complement of this color would be **63.8188, 70.4367, 84.3613**, and the grayscale version is **61.8130, 65.0320, 70.8199**.

A 20% lighter version of the original color is **95.0500, 100.0000, 108.9000**, and **33.1740, 32.7105, 30.9509** is the 20% darker color. If you saturate the color by 10%, you get **57.5235, 54.6820, 48.1326**, and if you desaturate by 10%, it is **71.5977, 74.3661, 78.9184**.

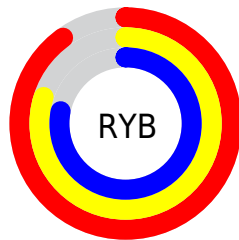
Distribution



Red (90%)

Green (80%)

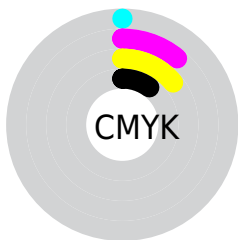
Blue (78%)



Red (90%)

Yellow (80%)

Blue (78%)

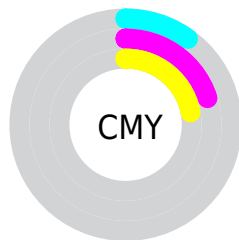


Cyan (0%)

Magenta (11%)

Yellow (14%)

Black (10%)



Cyan (10%)

Magenta (20%)

Yellow (22%)

Brightness & Saturation Gradients

These gradients show how the XYZ color 64.0990, 63.9210, 62.3857 changes by changing the brightness by 10 percent. The first figure shows a shift by +10% for each color and the second figure -10%.

Similar to the brightness gradients but the following saturation gradients show a change of the XYZ color 64.0990, 63.9210, 62.3857 by changing the saturation by 10% instead.

64.0990, 63.9210,
62.3857

64.0990, 63.9210,
62.3857

429.1436,
438.9043, 451.3830

46.9928, 46.5867,
44.9066

109.8264,
110.4972, 109.8598

33.2379, 32.7090,
31.0415

139.1784,
140.5078, 140.6919

22.4689, 21.9036,
20.3717

173.3431,
175.5127, 176.8120

14.3204, 13.7861,
12.4788

212.6857,
215.8962, 218.6388

8.4270, 7.9721,
6.9441

257.5718,
262.0427, 266.5908

4.4235, 4.0771,
3.3493

308.3665,

1.9444, 1.7168,

314.3366, 321.0864

1.2756

365.4354,
373.1624, 382.5443

■ 0.6024, 0.4345,
0.0417

■ 0.0000, 0.0000,
0.0000

■ 64.0990, 63.9210,
62.3857

■ 64.0990, 63.9210,
62.3857

■ 57.5235, 54.6820,
48.1326

■ 71.5977, 74.3661,
78.9184

■ 51.8301, 46.5972,
36.0547

■ 80.0484, 86.0498,
97.8204

■ 46.9820, 39.6234,
26.0459

■ 86.1233, 95.3981,
108.4822

■ 42.9380, 33.7116,
17.9892

■ 39.6533, 28.8088,
11.7561

■ 37.0784, 24.8578,
7.2025

■ 35.1578, 21.7949,
4.1623

■ 33.8264, 19.5485,
2.4349

■ 33.2273, 18.4860,
1.8169

Harmonies

Analogous

The Analogous color harmony consists of three colors that are next to each other on the color wheel.



65.0002, 63.9210, 67.8412



64.0990, 63.9210, 62.3857



62.3069, 63.9210, 59.0076

Triad

The Triadic color harmony groups three colors that are evenly spaced from another and form a triangle on the color wheel.



64.0990, 63.9210, 62.3857



56.9345, 63.9210, 65.2843



61.3762, 63.9210, 82.1737

Complementary

The Complementary color scheme is a pair of colors which are on the opposite of each other on the color wheel.



64.0990, 63.9210, 62.3857



63.8188, 70.4367, 84.3613

Split Complementary

Split-complementary colors differ from the complementary color scheme. The scheme consists of three colors, the original color and two neighbors of the complement color.



59.2291, 63.9210, 81.3877



64.0990, 63.9210, 62.3857



56.6988, 63.9210, 71.3871

Square

The Square scheme is like the rectangle color scheme, but the four colors are evenly spaced on the color wheel.



64.0990, 63.9210, 62.3857



58.1811, 63.9210, 60.6100



57.5294, 63.9210, 77.3482



63.4037, 63.9210, 79.4357

Rectangle

The Rectangle color scheme consists of four colors that form a rectangle on the color wheel.



64.0990, 63.9210, 62.3857



60.8660, 63.9210, 58.2644



57.5294, 63.9210, 77.3482



60.6441, 63.9210, 82.3160

Sweetspot

The Sweet Spot groups the original color and five complimentary colors.



64.1008, 63.9238, 62.3871



90.8831, 94.2247, 99.6233



65.8699, 62.3919, 78.6078



19.2897, 19.9416, 20.9618



0.0000, 0.0000, 0.0000



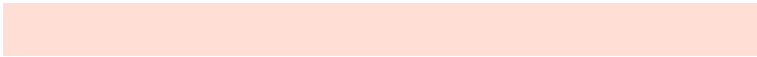
20.3446, 21.4041, 23.3091

Same Dimension

The Same Dimension uses a secret algorithm to generate beautiful new colors.



64.1008, 63.9238, 62.3871



79.5517, 78.4223, 74.6965



67.8862, 71.4947, 63.6489



14.6018, 14.8175, 14.9949



19.0636, 10.7013, 1.0608



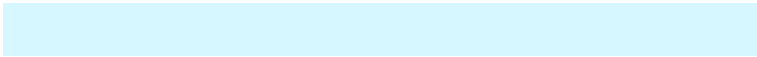
1.4725, 0.9182, 0.0996

Inverse Universe

The Inverse Universe completely reimagines the original color for something new.



63.8188, 70.4367, 84.3613



79.1306, 88.1275, 107.4474



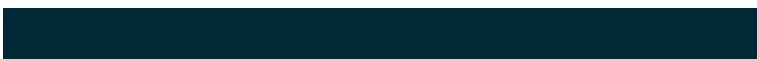
59.9436, 62.6862, 83.0696



14.5578, 15.8370, 18.4339



18.0484, 23.1588, 45.9020



1.3947, 1.8333, 3.4123

Previews

White Background



This preview shows how the XYZ color 64.0990, 63.9210, 62.3857 looks on a white background.

Color Contrast Check

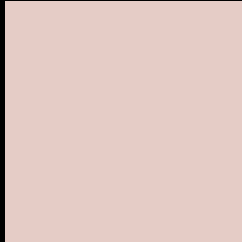
Large Text (above 18pt) WCAG AA × Fail

Any Text WCAG AA × Fail

Large Text (above 18pt) WCAG AAA × Fail

Any Text WCAG AAA × Fail

Black Background



This preview shows how the XYZ color 64.0990, 63.9210, 62.3857 looks on a black background.

Color Contrast Check

Large Text (above 18pt) WCAG AA ✓ Pass

Any Text WCAG AA ✓ Pass

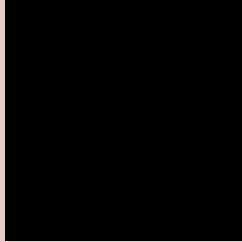
Large Text (above 18pt) WCAG AAA ✓ Pass

Any Text WCAG AAA ✓ Pass

If you want to check with other color combinations, try the [Color Contrast Checker](#).

XYZ 64.0990, 63.9210, 62.3857

Background



This preview shows how black text looks on a background with the XYZ color 64.0990, 63.9210, 62.3857.

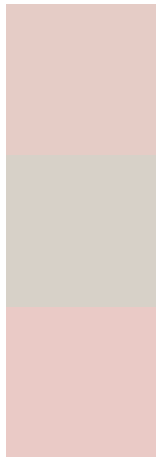


This preview shows how white text looks on a background with the XYZ color 64.0990, 63.9210,

Color Blindness Simulation

Color vision deficiency is a very complex topic, and I could not describe the different causes any better than Wikipedia does, so if you want to learn more, you should check out their [article about color blindness](#).

Dichromacy



Original Color

64.0990, 63.9210, 62.3857

Protanopia

61.2501, 64.2181, 63.8107

Deuteranopia

65.2453, 63.8107, 62.3040



Tritanopia

66.3660, 63.7720, 74.4570

Trichromacy



Original Color

64.0990, 63.9210, 62.3857

Protanomaly

62.1368, 63.9648, 63.1043

Deuteranomaly

64.8277, 63.9449, 62.3519

Tritanomaly

65.3865, 63.7172, 69.8252

Monochromacy



Original Color

64.0990, 63.9210, 62.3857

Achromatopsia

61.9161, 65.1406, 70.9381

Achromatomaly

62.6099, 64.4734, 67.5372

CSS Examples

Text

The CSS property to change the color of the text to XYZ 64.0990, 63.9210, 62.3857 is called "color". The color property can be set on classes, ids or directly on the HTML element.

This example shows how text in the color `rgb(229, 204, 198)` looks like.

```
.text, #text, p{  
    color:rgb(229, 204, 198)  
}
```

If you want to add a text shadow in that color use the text-shadow property, you can generate a text shadow directly with our [CSS Text Shadow Generator](#).

Here you see how black text with a 4 pixel rgb(229, 204, 198) colored shadow looks like.

```
.shadow{ text-shadow: 4px 4px 2px rgb(229, 204, 198) }
```

Border

The CSS property to change the border of an element to XYZ 64.0990, 63.9210, 62.3857 is called "border". The border property can be set on classes, ids or directly on the HTML element.

This example shows the color as border, it can be applied via the CSS property "border" or "border-color".

```
.border, #border, table{ border:4px solid rgb(229, 204, 198) }
```


If only the border color should be changed use the property `border-color`.

```
.border{ border-color:rgb(229, 204, 198) }
```

If you want to add a box shadow in that color use:

Here you see how a box with a 4 pixel `rgb(229, 204, 198)` colored shadow looks like.

```
.boxshadow{ -moz-box-shadow:4px 4px 4px 4px rgb(229, 204, 198); -webkit-box-shadow:4px 4px 4px 4px rgb(229, 204, 198); box-shadow:4px 4px 4px 4px rgb(229, 204, 198) }
```

Background

The CSS property to change the background color of an element to XYZ 64.0990, 63.9210, 62.3857 is called "background". The background property can be set on classes, ids or directly on the HTML element.

```
.background, #background, body{  
background: rgb(229, 204, 198) }
```

If only the background color should be changed can be used:

```
.background{ background-color: rgb(229,  
204, 198) }
```

This example shows the color as background, it is applied via the CSS property "background".

To optimize and compress your CSS code, you can use our [online CSS compressor and optimizer](#) based on csstidy. If you want to create a linear or radial gradient as background or border, check our [CSS Gradient Generator](#).

Hey! You found this booklet interesting? Support Converting Colors with the new Membership Option!

The pro membership hides all ads, plus gives you double the colors in the color bucket, and more awesome pro features!

[Learn more, Memberships starting at \\$2.50/m!](#)

**Follow me
on Twitter!**

@ConvertingColor