

# Converting Colors

XYZ(64.3204, 65.7600, 65.8028)

Have a look what the booklet for  
XYZ(64.3204, 65.7600, 65.8028)  
contains.

<b>XYZ(64.3204, 65.7600, 65.8028)</b> .....	3
<b><i>Conversions</i></b> .....	4
<b><i>Details</i></b> .....	6
<b><i>Harmonies</i></b> .....	12
<b><i>Previews</i></b> .....	24
<b><i>Color Blindness Simulation</i></b> .....	28
<b><i>CSS Examples</i></b> .....	31

# Color

**XYZ(64.3204, 65.7600,  
65.8028)**

# Conversions

## Conversions Part 1

Format	Color
Hex	E0D1CB
RGB	224, 209, 203
RGB Percent	88%, 82%, 80%
CMY	0.1216, 0.1804, 0.2039
CMYK	0.00, 0.07, 0.09, 0.12
HSL	17°, 25%, 84%
HSV	17°, 9%, 88%
XYZ	64.3204, 65.7600, 65.8028
YIQ	212.8010, 10.8660, 1.3140

# Conversions

## Conversions Part 2

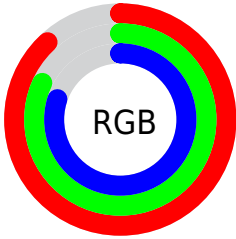
<b>Format</b>	<b>Color</b>
<b>R<sub>YB</sub></b>	224, 211, 203
Decimal	14733771
CIE <sub>Lab</sub>	84.87, 4.17, 4.83
CIE <sub>LCh</sub>	85, 6.382, 49.152
Yxy	65.7600, 0.3284, 0.3357
Android (android.graphics.Color)	4292923851 (0xFFE0D1CB)
YUV	212.8010, -4.8319, 9.8215
Hunter-Lab	81.0925, -0.3306, 8.6537

# Details

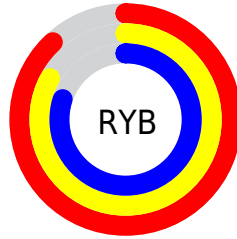
The XYZ color **64.3204, 65.7600, 65.8028** is a light color, and the websafe version is hex **CCCCCC**. A complement of this color would be **63.1543, 68.2199, 80.3609**, and the grayscale version is **63.1406, 66.4288, 72.3410**.

A 20% lighter version of the original color is **95.0500, 100.0000, 108.9000**, and **33.5083, 34.0476, 33.2395** is the 20% darker color. If you saturate the color by 10%, you get **58.1125, 57.3115, 51.5013**, and if you desaturate by 10%, it is **71.3118, 75.1567, 82.2699**.

# Distribution



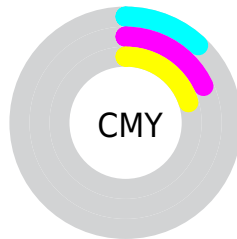
- Red (88%)
- Green (82%)
- Blue (80%)



- Red (88%)
- Yellow (83%)
- Blue (80%)



- Cyan (0%)
- Magenta (7%)
- Yellow (9%)
- Black (12%)



- Cyan (12%)
- Magenta (18%)
- Yellow (20%)

# Brightness & Saturation Gradients

These gradients show how the XYZ color 64.3204, 65.7600, 65.8028 changes by changing the brightness by 10 percent. The first figure shows a shift by +10% for each color and the second figure -10%.

Similar to the brightness gradients but the following saturation gradients show a change of the XYZ color 64.3204, 65.7600, 65.8028 by changing the saturation by 10% instead.



64.3204, 65.7600,  
65.8028

64.3204, 65.7600,  
65.8028

429.9297,  
445.5181, 464.0562

47.1729, 48.0776,  
47.6569

110.1434,  
113.1418, 114.8276

33.3809, 33.8883,  
33.1972

139.5496,  
143.6100, 146.5435

22.5790, 22.8078,  
22.0052

173.7727,  
179.1089, 183.6198

14.4019, 14.4517,  
13.6624

213.1781,  
220.0229, 226.4750

8.4843, 8.4355,  
7.7501

258.1311,  
266.7365, 275.5277

4.4608, 4.3748,  
3.8500

308.9972,

1.9660, 1.8854,

319.6339, 331.1965

1.5434

366.1416,  
379.0996, 393.8998

■ 0.6147, 0.5396,  
0.2500

■ 0.0000, 0.0000,  
0.0000

■ 64.3204, 65.7600,  
65.8028

■ 64.3204, 65.7600,  
65.8028

■ 58.1125, 57.3115,  
51.5013

■ 71.3118, 75.1567,  
82.2699

■ 52.6546, 49.7728,  
39.2706

■ 79.1077, 85.5212,  
100.9835

■ 47.9186, 43.1155,  
29.0151

■ 84.5508, 94.5874,  
108.4086

■ 43.8729, 37.3064,  
20.6299

■ 40.4829, 32.3103,  
14.0006

■ 37.7112, 28.0893,  
8.9997

■ 35.5158, 24.6022,  
5.4824

■ 33.8489, 21.8033,  
3.2777

■ 32.6412, 19.6361,  
2.1100

# Harmonies

## Analogous

The Analogous color harmony consists of three colors that are next to each other on the color wheel.



65.1391, 65.7600, 69.0464



64.3204, 65.7600, 65.8028



63.0223, 65.7600, 64.1356

# Triad

The Triadic color harmony groups three colors that are evenly spaced from another and form a triangle on the color wheel.



64.3204, 65.7600, 65.8028



59.8386, 65.7600, 70.1282



63.4102, 65.7600, 79.3087

# Complementary

The Complementary color scheme is a pair of colors which are on the opposite of each other on the color wheel.



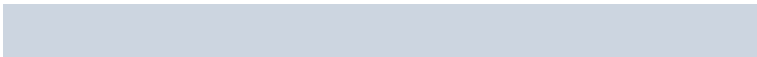
64.3204, 65.7600, 65.8028



63.1543, 68.2199, 80.3609

# Split Complementary

Split-complementary colors differ from the complementary color scheme. The scheme consists of three colors, the original color and two neighbors of the complement color.



61.9863, 65.7600, 79.6254



64.3204, 65.7600, 65.8028



59.9388, 65.7600, 74.2188

# Square

The Square scheme is like the rectangle color scheme, but the four colors are evenly spaced on the color wheel.



64.3204, 65.7600, 65.8028



60.4440, 65.7600, 66.5687



60.7200, 65.7600, 77.7311



64.6081, 65.7600, 76.8817



# Rectangle

The Rectangle color scheme consists of four colors that form a rectangle on the color wheel.



64.3204, 65.7600, 65.8028



62.0662, 65.7600, 64.0979



60.7200, 65.7600, 77.7311



62.9417, 65.7600, 79.6689

# Sweetspot

The Sweet Spot groups the original color and five complimentary colors.



64.3222, 65.7629, 65.8042



92.1245, 96.0810, 101.9691



64.7586, 63.6247, 75.2324



19.5546, 20.3454, 21.4390



0.0000, 0.0000, 0.0000



20.3446, 21.4041, 23.3091

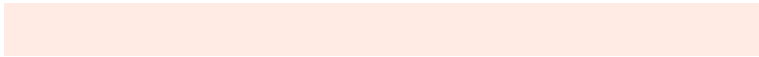


# Same Dimension

The Same Dimension uses a secret algorithm to generate beautiful new colors.



64.3222, 65.7629, 65.8042



84.7979, 86.2026, 84.8063



66.9698, 71.0580, 66.6867



14.0248, 14.3356, 14.3346



19.0469, 11.5317, 1.2220



1.3953, 0.9495, 0.1097

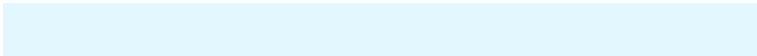


# Inverse Universe

The Inverse Universe completely reimagines the original color for something new.



63.1543, 68.2199, 80.3609



82.9675, 90.0522, 107.6167



60.5303, 62.9719, 79.4862



13.7682, 14.8755, 17.5333



15.2470, 17.9636, 43.7121

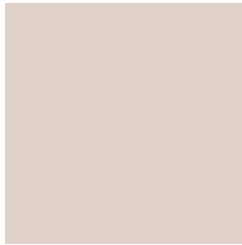


1.1321, 1.3957, 3.0550



# Previews

## White Background



This preview shows how the XYZ color 64.3204, 65.7600, 65.8028 looks on a white background.

## Color Contrast Check

Large Text (above 18pt) WCAG AA × Fail

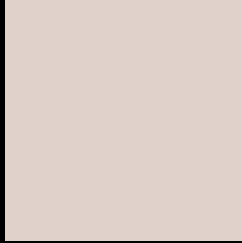
Any Text WCAG AA × Fail

Large Text (above 18pt) WCAG AAA × Fail

Any Text WCAG AAA × Fail



# Black Background



This preview shows how the XYZ color 64.3204, 65.7600, 65.8028 looks on a black background.

## Color Contrast Check

Large Text (above 18pt) WCAG AA ✓ Pass

Any Text WCAG AA ✓ Pass

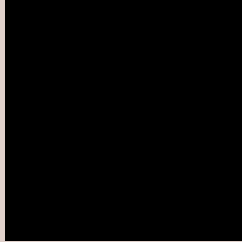
Large Text (above 18pt) WCAG AAA ✓ Pass

Any Text WCAG AAA ✓ Pass

If you want to check with other color combinations, try the [Color Contrast Checker](#).

# XYZ 64.3204, 65.7600, 65.8028

## Background



This preview shows how black text looks on a background with the XYZ color 64.3204, 65.7600, 65.8028.



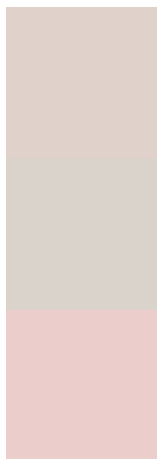
This preview shows how white text looks on a background with the XYZ color 64.3204, 65.7600,



# Color Blindness Simulation

Color vision deficiency is a very complex topic, and I could not describe the different causes any better than Wikipedia does, so if you want to learn more, you should check out their [article about color blindness](#).

## Dichromacy



### Original Color

64.3204, 65.7600, 65.8028

### Protanopia

63.1068, 65.8536, 66.5117

### Deuteranopia

66.9914, 65.6844, 66.2743



## Tritanopia

66.9347, 65.7474, 78.2699

# Trichromacy



## Original Color

64.3204, 65.7600, 65.8028

## Protanomaly

63.4609, 65.6685, 66.4573

## Deuteranomaly

65.9254, 65.4912, 66.2932

## Tritanomaly

65.9426, 65.7007, 73.4959

# Monochromacy



## Original Color

64.3204, 65.7600, 65.8028

## Achromatopsia

63.2451, 66.5387, 72.4607

## Achromatomaly

63.6674, 66.4421, 69.7906

# CSS Examples

## Text

The CSS property to change the color of the text to XYZ 64.3204, 65.7600, 65.8028 is called "color". The color property can be set on classes, ids or directly on the HTML element.

This example shows how text in the color rgb(224, 209, 203) looks like.

```
.text, #text, p{  
    color:rgb(224, 209, 203)  
}
```

If you want to add a text shadow in that color use the text-shadow property, you can generate a text shadow directly with our [CSS Text Shadow Generator](#).

Here you see how black text with a 4 pixel rgb(224, 209, 203) colored shadow looks like.

```
.shadow{ text-shadow: 4px 4px 2px rgb(224, 209, 203) }
```

## Border

The CSS property to change the border of an element to XYZ 64.3204, 65.7600, 65.8028 is called "border". The border property can be set on classes, ids or directly on the HTML element.

This example shows the color as border, it can be applied via the CSS property "border" or "border-color".

```
.border, #border, table{ border:4px solid rgb(224, 209, 203) }
```



If only the border color should be changed use the property border-color.

```
.border{ border-color:rgb(224, 209, 203) }
```

If you want to add a box shadow in that color use:

Here you see how a box with a 4 pixel rgb(224, 209, 203) colored shadow looks like.

```
.boxshadow{ -moz-box-shadow:4px 4px 4px  
4px rgb(224, 209, 203); -webkit-box-  
shadow:4px 4px 4px 4px rgb(224, 209, 203);  
box-shadow:4px 4px 4px 4px rgb(224, 209,  
203) }
```

# Background

The CSS property to change the background color of an element to XYZ 64.3204, 65.7600, 65.8028 is called "background". The background property can be set on classes, ids or directly on the HTML element.

```
.background, #background, body{  
background: rgb(224, 209, 203) }
```

If only the background color should be changed can be used:

```
.background{ background-color: rgb(224,  
209, 203) }
```

This example shows the color as background, it is applied via the CSS property "background".

To optimize and compress your CSS code, you can use our [online CSS compressor and optimizer](#) based on csstidy. If you want to create a linear or radial gradient as background or border, check our [CSS Gradient Generator](#).

Hey! You found this booklet interesting? Support Converting Colors with the new Membership Option!

The pro membership hides all ads, plus gives you double the colors in the color bucket, and more awesome pro features!

**[Learn more, Memberships starting at \\$2.50/m!](#)**

**Follow me  
on Twitter!**

@ConvertingColor