

Converting Colors

XYZ(64.3249, 64.0658, 70.8809)

Have a look what the booklet for
XYZ(64.3249, 64.0658, 70.8809)
contains.

XYZ(64.3297, 64.2131, 70.6318)	3
<i>Conversions</i>	4
<i>Details</i>	6
<i>Harmonies</i>	12
<i>Previews</i>	24
<i>Color Blindness Simulation</i>	28
<i>CSS Examples</i>	31

Color

**XYZ(64.3297, 64.2131,
70.6318)**

Conversions

Conversions Part 1

Format	Color
Hex	E0CDD3
RGB	224, 205, 211
RGB Percent	88%, 80%, 83%
CMY	0.1216, 0.1961, 0.1725
CMYK	0.00, 0.08, 0.06, 0.12
HSL	341°, 23%, 84%
HSV	341°, 8%, 88%
XYZ	64.3297, 64.2131, 70.6318
YIQ	211.3650, 9.3980, 5.8940

Conversions

Conversions Part 2

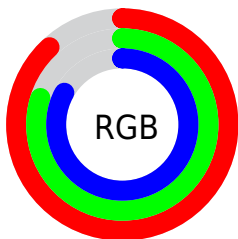
Format	Color
R_{YB}	224, 205, 211
Decimal	14732755
CIE Lab	84.08, 7.63, -0.59
CIE LCh	84, 7.654, 355.610
Yxy	64.2131, 0.3230, 0.3224
Android (android.graphics.Color)	4292922835 (0xFFE0CDD3)
YUV	211.3650, -0.1799, 11.0809
Hunter-Lab	80.1331, 3.0644, 3.8331

Details

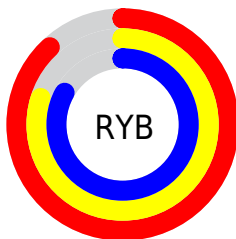
The XYZ color **64.3297, 64.2131, 70.6318** is a light color, and the websafe version is hex **CCCCCC**. A complement of this color would be **64.4899, 71.3542, 76.7071**, and the grayscale version is **62.1565, 65.3935, 71.2135**.

A 20% lighter version of the original color is **95.0500, 100.0000, 108.9000**, and **33.5146, 33.0026, 36.5020** is the 20% darker color. If you saturate the color by 10%, you get **57.5195, 53.5224, 59.3281**, and if you desaturate by 10%, it is **72.0939, 76.5169, 83.1593**.

Distribution



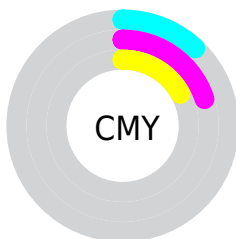
- Red (88%)
- Green (80%)
- Blue (83%)



- Red (88%)
- Yellow (80%)
- Blue (83%)



- Cyan (0%)
- Magenta (8%)
- Yellow (6%)
- Black (12%)



- Cyan (12%)
- Magenta (20%)
- Yellow (17%)

Brightness & Saturation Gradients

These gradients show how the XYZ color 64.3297, 64.2131, 70.6318 changes by changing the brightness by 10 percent. The first figure shows a shift by +10% for each color and the second figure -10%.

Similar to the brightness gradients but the following saturation gradients show a change of the XYZ color 64.3297, 64.2131, 70.6318 by changing the saturation by 10% instead.

64.3297, 64.2131,
70.6318

64.3297, 64.2131,
70.6318

429.9627,
439.9588, 481.6142

47.1804, 46.8233,
51.5618

110.1567,
110.9178, 121.7989

33.3869, 32.8960,
36.2761

139.5652,
141.0014, 154.7330

22.5836, 22.0468,
24.3561

173.7907,
176.0852, 193.1256

14.4054, 13.8913,
15.3834

213.1988,
216.5534, 237.3951

8.4867, 8.0451,
8.9393

258.1546,
262.7904, 287.9603

4.4623, 4.1238,
4.6053

309.0236,

1.9669, 1.7431,

315.1808, 345.2394

1.9630

366.1712,
374.1088, 409.6512

■ 0.6153, 0.4513,
0.5324

■ 0.0000, 0.0000,
0.0000

■ 64.3297, 64.2131,
70.6318

■ 64.3297, 64.2131,
70.6318

■ 57.5195, 53.5224,
59.3281

■ 72.0939, 76.5169,
83.1593

■ 51.6204, 44.3695,
49.2065

■ 80.8422, 90.4884,
96.9425

■ 46.5941, 36.6856,
40.2286

■ 84.5509, 94.5875,
108.4086

■ 42.3974, 30.3933,
32.3524

■ 38.9834, 25.4081,
25.5333

■ 36.3003, 21.6363,
19.7232

■ 34.2894, 18.9714,
14.8700

■ 32.8826, 17.2883,
10.9158

■ 31.9816, 16.4029,
7.7899

Harmonies

Analogous

The Analogous color harmony consists of three colors that are next to each other on the color wheel.



63.7532, 64.2131, 75.3055



64.3297, 64.2131, 70.6318



64.0095, 64.2131, 65.9719

Triad

The Triadic color harmony groups three colors that are evenly spaced from another and form a triangle on the color wheel.



64.3297, 64.2131, 70.6318



59.6390, 64.2131, 61.8577



59.2159, 64.2131, 77.8801

Complementary

The Complementary color scheme is a pair of colors which are on the opposite of each other on the color wheel.



64.3297, 64.2131, 70.6318



64.4899, 71.3542, 76.7071

Split Complementary

Split-complementary colors differ from the complementary color scheme. The scheme consists of three colors, the original color and two neighbors of the complement color.



58.1495, 64.2131, 74.0167



64.3297, 64.2131, 70.6318



58.3906, 64.2131, 64.7922

Square

The Square scheme is like the rectangle color scheme, but the four colors are evenly spaced on the color wheel.



64.3297, 64.2131, 70.6318



61.2817, 64.2131, 61.0440



57.8502, 64.2131, 69.2073



60.7843, 64.2131, 79.6110

Rectangle

The Rectangle color scheme consists of four colors that form a rectangle on the color wheel.



64.3297, 64.2131, 70.6318



63.3337, 64.2131, 63.4766



57.8502, 64.2131, 69.2073



58.7880, 64.2131, 76.7793

Sweetspot

The Sweet Spot groups the original color and five complimentary colors.



64.3315, 64.2159, 70.6332



91.8263, 94.8832, 103.7237



64.1966, 63.9503, 79.4821



19.4745, 20.0235, 21.9105



0.0000, 0.0000, 0.0000



20.3446, 21.4041, 23.3091

Same Dimension

The Same Dimension uses a secret algorithm to generate beautiful new colors.



64.3315, 64.2159, 70.6332



84.7643, 83.7223, 92.2344



64.4360, 65.6056, 67.0280



13.8846, 13.7715, 15.1624



18.5958, 9.5053, 4.5370



1.3286, 0.6747, 0.5232

Inverse Universe

The Inverse Universe completely reimagines the original color for something new.



64.3315, 64.2159, 70.6332



84.7643, 83.7223, 92.2344



64.3626, 69.8209, 80.6065



13.8846, 13.7715, 15.1624



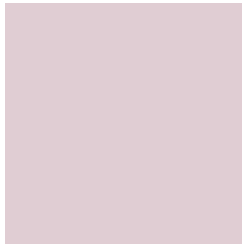
18.5958, 9.5053, 4.5370



1.3286, 0.6747, 0.5232

Previews

White Background



This preview shows how the XYZ color 64.3297, 64.2131, 70.6318 looks on a white background.

Color Contrast Check

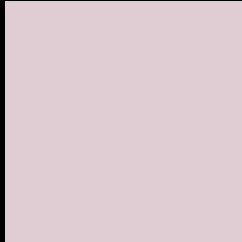
Large Text (above 18pt) WCAG AA × Fail

Any Text WCAG AA × Fail

Large Text (above 18pt) WCAG AAA × Fail

Any Text WCAG AAA × Fail

Black Background



This preview shows how the XYZ color 64.3297, 64.2131, 70.6318 looks on a black background.

Color Contrast Check

Large Text (above 18pt) WCAG AA ✓ Pass

Any Text WCAG AA ✓ Pass

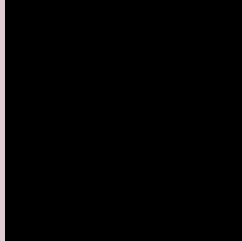
Large Text (above 18pt) WCAG AAA ✓ Pass

Any Text WCAG AAA ✓ Pass

If you want to check with other color combinations, try the [Color Contrast Checker](#).

XYZ 64.3297, 64.2131, 70.6318

Background



This preview shows how black text looks on a background with the XYZ color 64.3297, 64.2131, 70.6318.



This preview shows how white text looks on a background with the XYZ color 64.3297, 64.2131,

Color Blindness Simulation

Color vision deficiency is a very complex topic, and I could not describe the different causes any better than Wikipedia does, so if you want to learn more, you should check out their [article about color blindness](#).

Dichromacy



Original Color

64.3297, 64.2131, 70.6318

Protanopia

61.9621, 64.4021, 72.1159

Deuteranopia

65.4269, 64.0730, 70.5470



Tritanopia

65.5625, 64.3606, 76.6775

Trichromacy



Original Color

64.3297, 64.2131, 70.6318

Protanomaly

62.7584, 64.4641, 71.4225

Deuteranomaly

65.0293, 64.2198, 70.5963

Tritanomaly

65.1686, 64.2030, 74.6033

Monochromacy



Original Color

64.3297, 64.2131, 70.6318

Achromatopsia

61.9161, 65.1406, 70.9381

Achromatomaly

62.8772, 64.9030, 70.8416

CSS Examples

Text

The CSS property to change the color of the text to XYZ 64.3297, 64.2131, 70.6318 is called "color". The color property can be set on classes, ids or directly on the HTML element.

This example shows how text in the color rgb(224, 205, 211) looks like.

```
.text, #text, p{  
    color:rgb(224, 205, 211)  
}
```

If you want to add a text shadow in that color use the text-shadow property, you can generate a text shadow directly with our [CSS Text Shadow Generator](#).

Here you see how black text with a 4 pixel rgb(224, 205, 211) colored shadow looks like.

```
.shadow{ text-shadow: 4px 4px 2px rgb(224, 205, 211) }
```

Border

The CSS property to change the border of an element to XYZ 64.3297, 64.2131, 70.6318 is called "border". The border property can be set on classes, ids or directly on the HTML element.

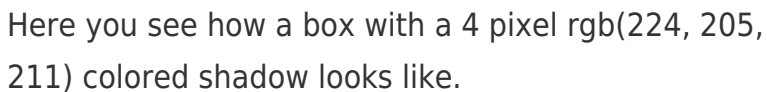
This example shows the color as border, it can be applied via the CSS property "border" or "border-color".

```
.border, #border, table{ border:4px solid rgb(224, 205, 211) }
```


If only the border color should be changed use the property `border-color`.

```
.border{ border-color:rgb(224, 205, 211) }
```

If you want to add a box shadow in that color use:



Here you see how a box with a 4 pixel `rgb(224, 205, 211)` colored shadow looks like.

```
.boxshadow{ -moz-box-shadow:4px 4px 4px 4px rgb(224, 205, 211); -webkit-box-shadow:4px 4px 4px 4px rgb(224, 205, 211); box-shadow:4px 4px 4px 4px rgb(224, 205, 211) }
```

Background

The CSS property to change the background color of an element to XYZ 64.3297, 64.2131, 70.6318 is called "background". The background property can be set on classes, ids or directly on the HTML element.

```
.background, #background, body{  
background: rgb(224, 205, 211) }
```

If only the background color should be changed can be used:

```
.background{ background-color: rgb(224,  
205, 211) }
```

This example shows the color as background, it is applied via the CSS property "background".

To optimize and compress your CSS code, you can use our [online CSS compressor and optimizer](#) based on csstidy. If you want to create a linear or radial gradient as background or border, check our [CSS Gradient Generator](#).

Hey! You found this booklet interesting? Support Converting Colors with the new Membership Option!

The pro membership hides all ads, plus gives you double the colors in the color bucket, and more awesome pro features!

[Learn more, Memberships starting at \\$2.50/m!](#)

**Follow me
on Twitter!**

@ConvertingColor