

# Converting Colors

XYZ(64.3584, 63.0063, 62.1955)

Have a look what the booklet for  
XYZ(64.3584, 63.0063, 62.1955)  
contains.

<b>XYZ(64.3584, 63.0063, 62.1955)</b> .....	3
<b><i>Conversions</i></b> .....	4
<b><i>Details</i></b> .....	6
<b><i>Harmonies</i></b> .....	12
<b><i>Previews</i></b> .....	24
<b><i>Color Blindness Simulation</i></b> .....	28
<b><i>CSS Examples</i></b> .....	31

# Color

**XYZ(64.3584, 63.0063,  
62.1955)**

# Conversions

## Conversions Part 1

Format	Color
Hex	E8C9C6
RGB	232, 201, 198
RGB Percent	91%, 79%, 78%
CMY	0.0902, 0.2117, 0.2235
CMYK	0.00, 0.13, 0.15, 0.09
HSL	5°, 43%, 84%
HSV	5°, 15%, 91%
XYZ	64.3584, 63.0063, 62.1955
YIQ	209.9270, 19.4390, 5.6390

# Conversions

## Conversions Part 2

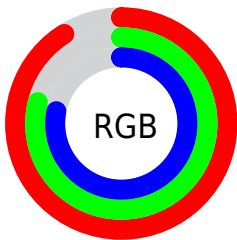
<b>Format</b>	<b>Color</b>
<b>R<sub>YB</sub></b>	232, 201, 198
Decimal	15256006
CIE <sub>Lab</sub>	83.45, 10.42, 5.51
CIE <sub>LCh</sub>	83, 11.786, 27.893
Yxy	63.0063, 0.3395, 0.3324
Android (android.graphics.Color)	4293446086 (0xFFE8C9C6)
YUV	209.9270, -5.8800, 19.3580
Hunter-Lab	79.3765, 5.8187, 9.1068

# Details

The XYZ color **64.3584, 63.0063, 62.1955** is a light color, and the websafe version is hex **FFCCCC**. A complement of this color would be **65.8731, 73.8690, 87.1308**, and the grayscale version is **61.2405, 64.4298, 70.1641**.

A 20% lighter version of the original color is **95.0500, 100.0000, 108.9000**, and **33.3723, 32.1112, 30.8247** is the 20% darker color. If you saturate the color by 10%, you get **57.2894, 52.8274, 47.6325**, and if you desaturate by 10%, it is **72.5197, 74.7125, 79.1463**.

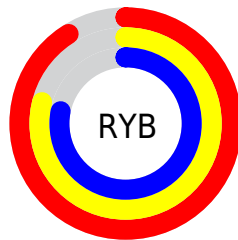
# Distribution



Red (91%)

Green (79%)

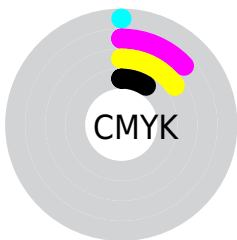
Blue (78%)



Red (91%)

Yellow (79%)

Blue (78%)

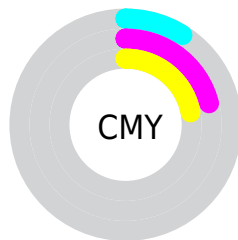


Cyan (0%)

Magenta (13%)

Yellow (15%)

Black (9%)



Cyan (9%)

Magenta (21%)

Yellow (22%)

# Brightness & Saturation Gradients

These gradients show how the XYZ color 64.3584, 63.0063, 62.1955 changes by changing the brightness by 10 percent. The first figure shows a shift by +10% for each color and the second figure -10%.

Similar to the brightness gradients but the following saturation gradients show a change of the XYZ color 64.3584, 63.0063, 62.1955 by changing the saturation by 10% instead.



64.3584, 63.0063,  
62.1955

64.3584, 63.0063,  
62.1955

430.0645,  
435.5924, 450.6712

47.2038, 45.8463,  
44.7539

110.1978,  
109.1786, 109.5824

33.4054, 32.1246,  
30.9221

139.6133,  
138.9597, 140.3647

22.5979, 21.4567,  
20.2815

173.8464,  
173.7166, 176.4310

14.4159, 13.4582,  
12.4138

213.2626,  
213.8337, 218.1998

8.4942, 7.7448,  
6.9002

258.2271,  
259.6955, 266.0897

4.4672, 3.9321,  
3.3222

309.1053,

1.9697, 1.6357,

311.6862, 320.5192

1.2614

366.2627,  
370.1904, 381.9069

0.6169, 0.3815,  
0.0299

0.0000, 0.0000,  
0.0000

64.3584, 63.0063,  
62.1955

64.3584, 63.0063,  
62.1955

57.2894, 52.8274,  
47.6325

72.5197, 74.7125,  
79.1463

51.2614, 44.1049,  
35.3462

81.8114, 87.9965,  
98.5812

46.2265, 36.7746,  
25.2226

87.0890, 95.8959,  
108.5274

42.1313, 30.7643,  
17.1364

■ 38.9172, 25.9955,  
10.9493

■ 36.5190, 22.3812,  
6.5059

■ 34.8624, 19.8229,  
3.6260

■ 33.8591, 18.2060,  
2.0904

■ 33.5380, 17.6740,  
1.6438

# Harmonies

## Analogous

The Analogous color harmony consists of three colors that are next to each other on the color wheel.



64.9589, 63.0063, 69.1247



64.3584, 63.0063, 62.1955



62.5496, 63.0063, 57.3041

# Triad

The Triadic color harmony groups three colors that are evenly spaced from another and form a triangle on the color wheel.



64.3584, 63.0063, 62.1955



55.7981, 63.0063, 61.3553



59.7041, 63.0063, 83.7339

# Complementary

The Complementary color scheme is a pair of colors which are on the opposite of each other on the color wheel.



64.3584, 63.0063, 62.1955



65.8731, 73.8690, 87.1308

# Split Complementary

Split-complementary colors differ from the complementary color scheme. The scheme consists of three colors, the original color and two neighbors of the complement color.



57.2983, 63.0063, 81.2977



64.3584, 63.0063, 62.1955



55.0836, 63.0063, 68.0843

# Square

The Square scheme is like the rectangle color scheme, but the four colors are evenly spaced on the color wheel.



64.3584, 63.0063, 62.1955



57.6043, 63.0063, 56.8439



55.6250, 63.0063, 75.4364



62.2263, 63.0063, 81.8816



# Rectangle

The Rectangle color scheme consists of four colors that form a rectangle on the color wheel.



64.3584, 63.0063, 62.1955



60.9277, 63.0063, 55.6797



55.6250, 63.0063, 75.4364



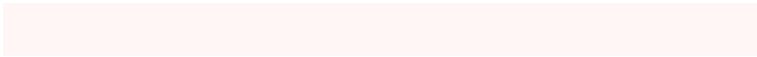
58.8555, 63.0063, 83.3859

# Sweetspot

The Sweet Spot groups the original color and five complimentary colors.



64.3601, 63.0091, 62.1968



90.5559, 93.5703, 99.5143



67.6397, 63.2113, 82.8875



19.2072, 19.7767, 20.9343



0.0000, 0.0000, 0.0000



20.3446, 21.4041, 23.3091



# Same Dimension

The Same Dimension uses a secret algorithm to generate beautiful new colors.



64.3601, 63.0091, 62.1968



76.5944, 73.5352, 70.5433



68.5007, 71.2902, 63.5770



14.4789, 14.5716, 14.9539



18.6570, 9.8881, 0.9253



1.4142, 0.8016, 0.0802

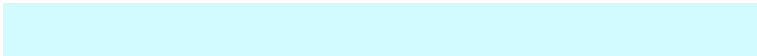


# Inverse Universe

The Inverse Universe completely reimagines the original color for something new.



65.8731, 73.8690, 87.1308



78.8526, 89.7496, 107.7752



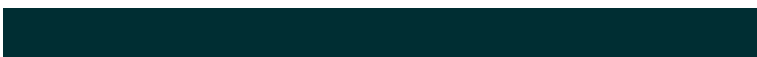
61.4402, 65.0032, 85.6532



14.6928, 16.1071, 18.4789



21.1352, 29.3325, 46.9310

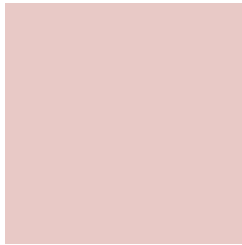


1.5939, 2.2318, 3.4787



# Previews

## White Background



This preview shows how the XYZ color 64.3584, 63.0063, 62.1955 looks on a white background.

## Color Contrast Check

Large Text (above 18pt) WCAG AA × Fail

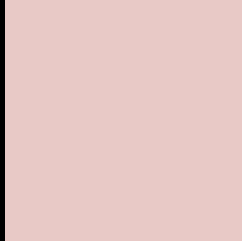
Any Text WCAG AA × Fail

Large Text (above 18pt) WCAG AAA × Fail

Any Text WCAG AAA × Fail



# Black Background



This preview shows how the XYZ color 64.3584, 63.0063, 62.1955 looks on a black background.

## Color Contrast Check

Large Text (above 18pt) WCAG AA ✓ Pass

Any Text WCAG AA ✓ Pass

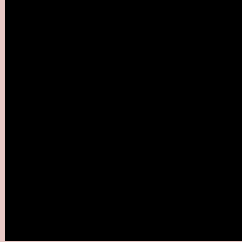
Large Text (above 18pt) WCAG AAA ✓ Pass

Any Text WCAG AAA ✓ Pass

If you want to check with other color combinations, try the [Color Contrast Checker](#).

# XYZ 64.3584, 63.0063, 62.1955

## Background



This preview shows how black text looks on a background with the XYZ color 64.3584, 63.0063, 62.1955.



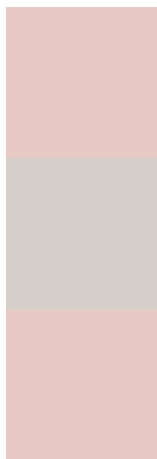
This preview shows how white text looks on a background with the XYZ color 64.3584, 63.0063,



# Color Blindness Simulation

Color vision deficiency is a very complex topic, and I could not describe the different causes any better than Wikipedia does, so if you want to learn more, you should check out their [article about color blindness](#).

## Dichromacy



### Original Color

64.3584, 63.0063, 62.1955

### Protanopia

60.2960, 62.9888, 64.2385

### Deuteranopia

64.3584, 63.0063, 62.1955



## Tritanopia

66.4927, 63.1943, 72.3115

# Trichromacy



## Original Color

64.3584, 63.0063, 62.1955

## Protanomaly

61.7718, 63.0484, 63.5574

## Deuteranomaly

64.3584, 63.0063, 62.1955

## Tritanomaly

65.6437, 63.1863, 68.4109

# Monochromacy



## Original Color

64.3584, 63.0063, 62.1955

## Achromatopsia

61.2578, 64.4480, 70.1838

## Achromatomaly

62.3668, 63.9873, 67.4562

# CSS Examples

## Text

The CSS property to change the color of the text to XYZ 64.3584, 63.0063, 62.1955 is called "color". The color property can be set on classes, ids or directly on the HTML element.

This example shows how text in the color `rgb(232, 201, 198)` looks like.

```
.text, #text, p{  
    color:rgb(232, 201, 198)  
}
```

If you want to add a text shadow in that color use the text-shadow property, you can generate a text shadow directly with our [CSS Text Shadow Generator](#).

Here you see how black text with a 4 pixel rgb(232, 201, 198) colored shadow looks like.

```
.shadow{ text-shadow: 4px 4px 2px rgb(232, 201, 198) }
```

## Border

The CSS property to change the border of an element to XYZ 64.3584, 63.0063, 62.1955 is called "border". The border property can be set on classes, ids or directly on the HTML element.

This example shows the color as border, it can be applied via the CSS property "border" or "border-color".

```
.border, #border, table{ border:4px solid rgb(232, 201, 198) }
```



If only the border color should be changed use the property `border-color`.

```
.border{ border-color:rgb(232, 201, 198) }
```

If you want to add a box shadow in that color use:

Here you see how a box with a 4 pixel `rgb(232, 201, 198)` colored shadow looks like.

```
.boxshadow{ -moz-box-shadow:4px 4px 4px  
4px rgb(232, 201, 198); -webkit-box-  
shadow:4px 4px 4px 4px rgb(232, 201, 198);  
box-shadow:4px 4px 4px 4px rgb(232, 201,  
198) }
```

# Background

The CSS property to change the background color of an element to XYZ 64.3584, 63.0063, 62.1955 is called "background". The background property can be set on classes, ids or directly on the HTML element.

```
.background, #background, body{  
background: rgb(232, 201, 198) }
```

If only the background color should be changed can be used:

```
.background{ background-color: rgb(232,  
201, 198) }
```

This example shows the color as background, it is applied via the CSS property "background".

To optimize and compress your CSS code, you can use our [online CSS compressor and optimizer](#) based on csstidy. If you want to create a linear or radial gradient as background or border, check our [CSS Gradient Generator](#).

Hey! You found this booklet interesting? Support Converting Colors with the new Membership Option!

The pro membership hides all ads, plus gives you double the colors in the color bucket, and more awesome pro features!

**[Learn more, Memberships starting at \\$2.50/m!](#)**

**Follow me  
on Twitter!**

@ConvertingColor