

Converting Colors

XYZ(64.3753, 61.6063, 52.9217)

Have a look what the booklet for
XYZ(64.3753, 61.6063, 52.9217)
contains.

XYZ(64.1186, 61.3825, 52.7246)	3
<i>Conversions</i>	4
<i>Details</i>	6
<i>Harmonies</i>	12
<i>Previews</i>	24
<i>Color Blindness Simulation</i>	28
<i>CSS Examples</i>	31

Color

**XYZ(64.1186, 61.3825,
52.7246)**

Conversions

Conversions Part 1

Format	Color
Hex	F0C4B6
RGB	240, 196, 182
RGB Percent	94%, 77%, 71%
CMY	0.0588, 0.2313, 0.2863
CMYK	0.00, 0.18, 0.24, 0.06
HSL	14°, 66%, 83%
HSV	14°, 24%, 94%
XYZ	64.1186, 61.3825, 52.7246
YIQ	207.5600, 30.7180, 4.9740

Conversions

Conversions Part 2

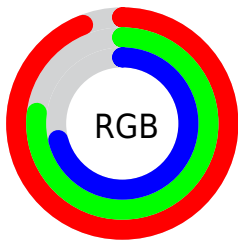
Format	Color
R _Y B	240, 200, 182
Decimal	15778998
CIE Lab	82.58, 13.58, 12.92
CIE LCh	83, 18.747, 43.560
Yxy	61.3825, 0.3598, 0.3444
Android (android.graphics.Color)	4293969078 (0xFFFF0C4B6)
YUV	207.5600, -12.6011, 28.4499
Hunter-Lab	78.3470, 8.9759, 14.9429

Details

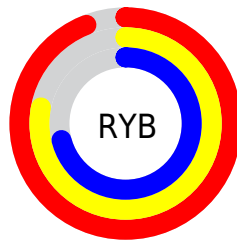
The XYZ color **64.1186, 61.3825, 52.7246** is a light color, and the websafe version is hex **FFCCCC**. A complement of this color would be **62.2153, 70.6272, 92.7917**, and the grayscale version is **59.7358, 62.8467, 68.4401**.

A 20% lighter version of the original color is **91.7979, 97.6836, 94.9055**, and **33.1639, 30.9983, 25.0042** is the 20% darker color. If you saturate the color by 10%, you get **57.9878, 52.7556, 39.4750**, and if you desaturate by 10%, it is **71.1761, 71.1816, 68.3816**.

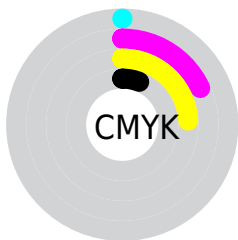
Distribution



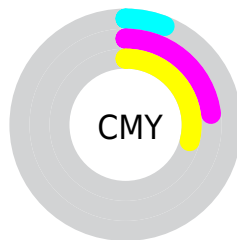
- Red (94%)
- Green (77%)
- Blue (71%)



- Red (94%)
- Yellow (78%)
- Blue (71%)



- Cyan (0%)
- Magenta (18%)
- Yellow (24%)
- Black (6%)



- Cyan (6%)
- Magenta (23%)
- Yellow (29%)

Brightness & Saturation Gradients

These gradients show how the XYZ color 64.1186, 61.3825, 52.7246 changes by changing the brightness by 10 percent. The first figure shows a shift by +10% for each color and the second figure -10%.

Similar to the brightness gradients but the following saturation gradients show a change of the XYZ color 64.1186, 61.3825, 52.7246 by changing the saturation by 10% instead.

64.1186, 61.3825,
52.7246

64.1186, 61.3825,
52.7246

429.2132,
429.6751, 414.2639

47.0088, 44.5339,
37.1967

109.8545,
106.8326, 95.6364

33.2506, 31.0905,
25.0629

139.2113,
136.2029, 123.8575

22.4786, 20.6678,
15.9045

173.3811,
170.5159, 157.1467

14.3276, 12.8814,
9.3030

212.7293,
210.1559, 195.9226

8.4321, 7.3469,
4.8398

257.6213,
255.5075, 240.6037

4.4268, 3.6800,
2.0965

308.4224,

1.9463, 1.4962,

306.9550, 291.6086

0.6137

365.4979,
364.8827, 349.3558

0.6035, 0.2861,
0.0000

0.0000, 0.0000,
0.0000

64.1186, 61.3825,
52.7246

64.1186, 61.3825,
52.7246

57.9878, 52.7556,
39.4750

71.1761, 71.1816,
68.3816

52.7394, 45.2483,
28.5089

79.1923, 82.1863,
86.5538

48.3325, 38.8164,
19.6972

88.2039, 94.4390,
107.3471

44.7211, 33.4093,
12.8960

89.7453, 97.2653,
108.6517

■ 41.8545, 28.9724,
7.9439

■ 39.6753, 25.4454,
4.6542

■ 38.1164, 22.7607,
2.7998

■ 37.4459, 21.5464,
2.1853

Harmonies

Analogous

The Analogous color harmony consists of three colors that are next to each other on the color wheel.



66.1753, 61.3825, 61.7830



64.1186, 61.3825, 52.7246



60.5550, 61.3825, 47.7893

Triad

The Triadic color harmony groups three colors that are evenly spaced from another and form a triangle on the color wheel.



64.1186, 61.3825, 52.7246



51.2451, 61.3825, 60.7698



60.1715, 61.3825, 90.7205

Complementary

The Complementary color scheme is a pair of colors which are on the opposite of each other on the color wheel.



64.1186, 61.3825, 52.7246



62.2153, 70.6272, 92.7917

Split Complementary

Split-complementary colors differ from the complementary color scheme. The scheme consists of three colors, the original color and two neighbors of the complement color.



56.1841, 61.3825, 90.3684



64.1186, 61.3825, 52.7246



51.1531, 61.3825, 72.1554

Square

The Square scheme is like the rectangle color scheme, but the four colors are evenly spaced on the color wheel.



64.1186, 61.3825, 52.7246



53.1812, 61.3825, 52.0565



52.9236, 61.3825, 83.2622



63.8268, 61.3825, 84.1754

Rectangle

The Rectangle color scheme consists of four colors that form a rectangle on the color wheel.



64.1186, 61.3825, 52.7246



57.8641, 61.3825, 47.1038



52.9236, 61.3825, 83.2622



58.8230, 61.3825, 91.4258

Sweetspot

The Sweet Spot groups the original color and five complimentary colors.



64.1202, 61.3853, 52.7259



88.1396, 90.5665, 93.0713



66.4553, 57.4986, 79.8840



18.7436, 19.2179, 19.6438



0.0000, 0.0000, 0.0000



20.3446, 21.4041, 23.3091

Same Dimension

The Same Dimension uses a secret algorithm to generate beautiful new colors.



64.1202, 61.3853, 52.7259



69.9874, 65.4018, 52.6780



71.1784, 75.5016, 55.0786



16.0827, 16.3785, 16.4634



20.5846, 11.9672, 1.2250



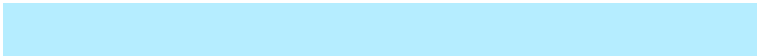
1.7875, 1.1456, 0.1269

Inverse Universe

The Inverse Universe completely reimagines the original color for something new.



62.2153, 70.6272, 92.7917



67.4437, 77.7017, 106.0510



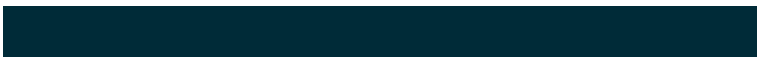
55.0927, 56.3819, 90.4175



15.9052, 17.2445, 20.2118



17.8814, 21.9870, 48.4293



1.5640, 1.9820, 4.0544

Previews

White Background



This preview shows how the XYZ color 64.1186, 61.3825, 52.7246 looks on a white background.

Color Contrast Check

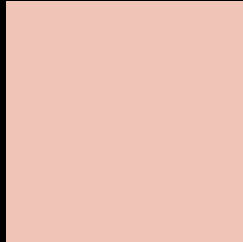
Large Text (above 18pt) WCAG AA × Fail

Any Text WCAG AA × Fail

Large Text (above 18pt) WCAG AAA × Fail

Any Text WCAG AAA × Fail

Black Background



This preview shows how the XYZ color 64.1186, 61.3825, 52.7246 looks on a black background.

Color Contrast Check

Large Text (above 18pt) WCAG AA ✓ Pass

Any Text WCAG AA ✓ Pass

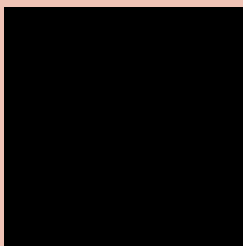
Large Text (above 18pt) WCAG AAA ✓ Pass

Any Text WCAG AAA ✓ Pass

If you want to check with other color combinations, try the [Color Contrast Checker](#).

XYZ 64.1186, 61.3825, 52.7246

Background



This preview shows how black text looks on a background with the XYZ color 64.1186, 61.3825, 52.7246.



This preview shows how white text looks on a background with the XYZ color 64.1186, 61.3825,

52.7246.

Color Blindness Simulation

Color vision deficiency is a very complex topic, and I could not describe the different causes any better than Wikipedia does, so if you want to learn more, you should check out their [article about color blindness](#).

Dichromacy



Original Color

64.1186, 61.3825, 52.7246

Protanopia

58.5325, 61.5466, 55.8084

Deuteranopia

62.5693, 61.2580, 52.7822



Tritanopia

67.0743, 61.2590, 67.3204

Trichromacy



Original Color

64.1186, 61.3825, 52.7246

Protanomaly

60.3089, 61.4318, 54.5778

Deuteranomaly

63.0018, 61.1428, 52.7371

Tritanomaly

65.8810, 61.0944, 61.7462

Monochromacy



Original Color

64.1186, 61.3825, 52.7246

Achromatopsia

59.9535, 63.0757, 68.6895

Achromatomaly

61.4169, 62.5249, 62.8643

CSS Examples

Text

The CSS property to change the color of the text to XYZ 64.1186, 61.3825, 52.7246 is called "color". The color property can be set on classes, ids or directly on the HTML element.

This example shows how text in the color `rgb(240, 196, 182)` looks like.

```
.text, #text, p{  
    color:rgb(240, 196, 182)  
}
```

If you want to add a text shadow in that color use the text-shadow property, you can generate a text shadow directly with our [CSS Text Shadow Generator](#).

Here you see how black text with a 4 pixel rgb(240, 196, 182) colored shadow looks like.

```
.shadow{ text-shadow: 4px 4px 2px rgb(240, 196, 182) }
```

Border

The CSS property to change the border of an element to XYZ 64.1186, 61.3825, 52.7246 is called "border". The border property can be set on classes, ids or directly on the HTML element.

This example shows the color as border, it can be applied via the CSS property "border" or "border-color".

```
.border, #border, table{ border:4px solid rgb(240, 196, 182) }
```


If only the border color should be changed use the property `border-color`.

```
.border{ border-color:rgb(240, 196, 182) }
```

If you want to add a box shadow in that color use:

Here you see how a box with a 4 pixel `rgb(240, 196, 182)` colored shadow looks like.

```
.boxshadow{ -moz-box-shadow:4px 4px 4px  
4px rgb(240, 196, 182); -webkit-box-  
shadow:4px 4px 4px 4px rgb(240, 196, 182);  
box-shadow:4px 4px 4px 4px rgb(240, 196,  
182) }
```

Background

The CSS property to change the background color of an element to XYZ 64.1186, 61.3825, 52.7246 is called "background". The background property can be set on classes, ids or directly on the HTML element.

```
.background, #background, body{  
background: rgb(240, 196, 182) }
```

If only the background color should be changed can be used:

```
.background{ background-color: rgb(240,  
196, 182) }
```

This example shows the color as background, it is applied via the CSS property "background".

To optimize and compress your CSS code, you can use our [online CSS compressor and optimizer](#) based on csstidy. If you want to create a linear or radial gradient as background or border, check our [CSS Gradient Generator](#).

Hey! You found this booklet interesting? Support Converting Colors with the new Membership Option!

The pro membership hides all ads, plus gives you double the colors in the color bucket, and more awesome pro features!

[Learn more, Memberships starting at \\$2.50/m!](#)

**Follow me
on Twitter!**

@ConvertingColor