

# Converting Colors

XYZ(64.3829, 65.2085, 63.3724)

Have a look what the booklet for  
XYZ(64.3829, 65.2085, 63.3724)  
contains.

<b>XYZ(64.3002, 65.0801, 63.2056)</b> .....	3
<b><i>Conversions</i></b> .....	4
<b><i>Details</i></b> .....	6
<b><i>Harmonies</i></b> .....	12
<b><i>Previews</i></b> .....	24
<b><i>Color Blindness Simulation</i></b> .....	28
<b><i>CSS Examples</i></b> .....	31

# **Color**

**XYZ(64.3002, 65.0801,  
63.2056)**

# Conversions

## Conversions Part 1

Format	Color
Hex	E3CFC7
RGB	227, 207, 199
RGB Percent	89%, 81%, 78%
CMY	0.1098, 0.1882, 0.2196
CMYK	0.00, 0.09, 0.12, 0.11
HSL	17°, 33%, 84%
HSV	17°, 12%, 89%
XYZ	64.3002, 65.0801, 63.2056
YIQ	212.0680, 14.4880, 1.7520

# Conversions

## Conversions Part 2

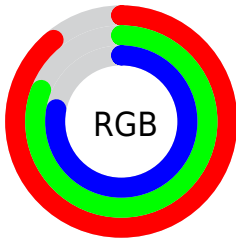
<b>Format</b>	<b>Color</b>
R <sub>Y</sub> B	227, 210, 199
Decimal	14929863
CIE Lab	84.52, 5.63, 6.48
CIE LCh	85, 8.586, 49.009
Yxy	65.0801, 0.3339, 0.3379
Android (android.graphics.Color)	4293119943 (0xFFE3CFC7)
YUV	212.0680, -6.4425, 13.0954
Hunter-Lab	80.6722, 1.0979, 10.0177

# Details

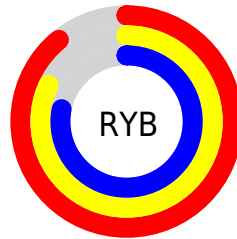
The XYZ color **64.3002, 65.0801, 63.2056** is a light color, and the websafe version is hex **CCCCCC**. A complement of this color would be **62.7496, 68.3498, 82.5593**, and the grayscale version is **62.6608, 65.9240, 71.7912**.

A 20% lighter version of the original color is **95.0500, 100.0000, 108.9000**, and **33.2967, 33.4847, 31.4963** is the 20% darker color. If you saturate the color by 10%, you get **58.1312, 56.6497, 49.1015**, and if you desaturate by 10%, it is **71.2693, 74.4801, 79.5176**.

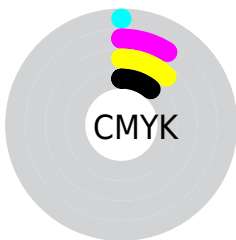
# Distribution



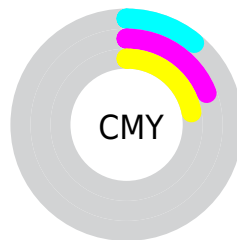
- Red (89%)
- Green (81%)
- Blue (78%)



- Red (89%)
- Yellow (82%)
- Blue (78%)



- Cyan (0%)
- Magenta (9%)
- Yellow (12%)
- Black (11%)




- Cyan (11%)
- Magenta (19%)
- Yellow (22%)


# Brightness & Saturation Gradients

These gradients show how the XYZ color 64.3002, 65.0801, 63.2056 changes by changing the brightness by 10 percent. The first figure shows a shift by +10% for each color and the second figure -10%.

Similar to the brightness gradients but the following saturation gradients show a change of the XYZ color 64.3002, 65.0801, 63.2056 by changing the saturation by 10% instead.




 64.3002, 65.0801,  
63.2056

 64.3002, 65.0801,  
63.2056


429.8580,  
443.0798, 454.4437

 47.1564, 47.5260,  
45.5655


110.1145,  
112.1650, 111.0545

 33.3678, 33.4517,  
31.5569


139.5157,  
142.4646, 142.1004

 22.5689, 22.4727,  
20.7613


173.7335,  
177.7816, 178.4520

 14.3945, 14.2046,  
12.7601

213.1332,  
218.5002, 220.5277

 8.4791, 8.2631,  
7.1348

258.0801,  
265.0050, 268.7462

 4.4574, 4.2638,  
3.4668

308.9397,

 1.9640, 1.8222,

317.6802, 323.5261

1.3376

366.0772,  
376.9103, 385.2857

■ 0.6136, 0.5009,  
0.0923

■ 0.0000, 0.0000,  
0.0000

■ 64.3002, 65.0801,  
63.2056

■ 64.3002, 65.0801,  
63.2056

■ 58.1312, 56.6497,  
49.1015

■ 71.2693, 74.4801,  
79.5176

■ 52.7275, 49.1490,  
37.1057

■ 79.0609, 84.8707,  
98.1229

■ 48.0594, 42.5481,  
27.1173

■ 85.4888, 95.0710,  
108.4525

■ 44.0934, 36.8122,  
19.0251

■ 40.7931, 31.9041,  
12.7072

■ 38.1184, 27.7835,  
8.0272

■ 36.0245, 24.4068,  
4.8288

■ 34.4594, 21.7251,  
2.9241

■ 33.5629, 20.0992,  
2.1106

# Harmonies

## Analogous

The Analogous color harmony consists of three colors that are next to each other on the color wheel.



65.3989, 65.0801, 67.4860



64.3002, 65.0801, 63.2056



62.5604, 65.0801, 61.0177

# Triad

The Triadic color harmony groups three colors that are evenly spaced from another and form a triangle on the color wheel.



64.3002, 65.0801, 63.2056



58.3167, 65.0801, 68.8722



63.0622, 65.0801, 81.2918

# Complementary

The Complementary color scheme is a pair of colors which are on the opposite of each other on the color wheel.



64.3002, 65.0801, 63.2056



62.7496, 68.3498, 82.5593

# Split Complementary

Split-complementary colors differ from the complementary color scheme. The scheme consists of three colors, the original color and two neighbors of the complement color.



61.1582, 65.0801, 81.7101



64.3002, 65.0801, 63.2056



58.4447, 65.0801, 74.3470

# Square

The Square scheme is like the rectangle color scheme, but the four colors are evenly spaced on the color wheel.



64.3002, 65.0801, 63.2056



59.1224, 65.0801, 64.1753



59.4759, 65.0801, 79.1112



64.6740, 65.0801, 77.9959



# Rectangle

The Rectangle color scheme consists of four colors that form a rectangle on the color wheel.



64.3002, 65.0801, 63.2056



61.2827, 65.0801, 60.9605



59.4759, 65.0801, 79.1112



62.4343, 65.0801, 81.7797

# Sweetspot

The Sweet Spot groups the original color and five complimentary colors.



64.3020, 65.0830, 63.2070



91.1710, 94.8005, 99.7193



64.8977, 62.2967, 75.6686



19.3624, 20.0869, 20.9860



0.0000, 0.0000, 0.0000



20.3446, 21.4041, 23.3091

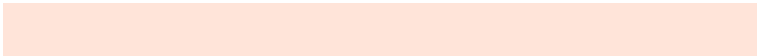


# Same Dimension

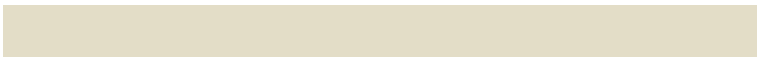
The Same Dimension uses a secret algorithm to generate beautiful new colors.



64.3020, 65.0830, 63.2070



81.3885, 81.5700, 76.9302



67.8269, 72.1329, 64.3820



14.7109, 15.0356, 15.0313



19.6600, 11.8942, 1.2596



1.5302, 1.0337, 0.1189

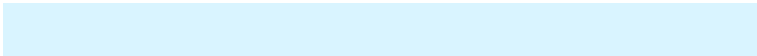


# Inverse Universe

The Inverse Universe completely reimagines the original color for something new.



62.7496, 68.3498, 82.5593



78.9615, 86.6743, 107.1758



59.2665, 61.3837, 81.3982



14.4411, 15.6036, 18.3950



15.7368, 18.5357, 45.1315

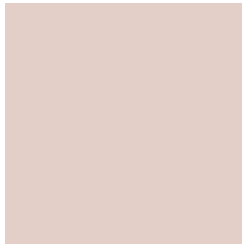


1.2412, 1.5264, 3.3612



# Previews

## White Background



This preview shows how the XYZ color 64.3002, 65.0801, 63.2056 looks on a white background.

## Color Contrast Check

Large Text (above 18pt) WCAG AA × Fail

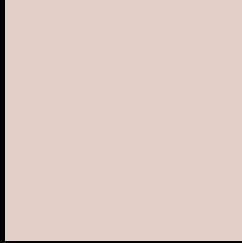
Any Text WCAG AA × Fail

Large Text (above 18pt) WCAG AAA × Fail

Any Text WCAG AAA × Fail



# Black Background



This preview shows how the XYZ color 64.3002, 65.0801, 63.2056 looks on a black background.

## Color Contrast Check

Large Text (above 18pt) WCAG AA ✓ Pass

Any Text WCAG AA ✓ Pass

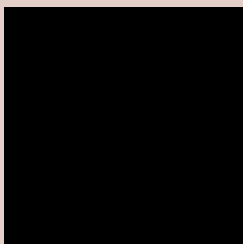
Large Text (above 18pt) WCAG AAA ✓ Pass

Any Text WCAG AAA ✓ Pass

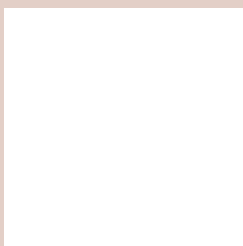
If you want to check with other color combinations, try the [Color Contrast Checker](#).

**XYZ 64.3002, 65.0801, 63.2056**

## **Background**



This preview shows how black text looks on a background with the XYZ color 64.3002, 65.0801, 63.2056.



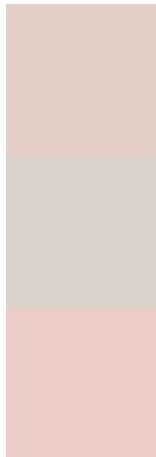
This preview shows how white text looks on a background with the XYZ color 64.3002, 65.0801,



# Color Blindness Simulation

Color vision deficiency is a very complex topic, and I could not describe the different causes any better than Wikipedia does, so if you want to learn more, you should check out their [article about color blindness](#).

## Dichromacy



### Original Color

64.3002, 65.0801, 63.2056

### Protanopia

62.2045, 65.0619, 64.5380

### Deuteranopia

66.6103, 65.1887, 63.7155



## Tritanopia

67.1443, 65.1760, 76.7515

# Trichromacy



## Original Color

64.3002, 65.0801, 63.2056

## Protanomaly

63.0446, 65.1432, 63.8947

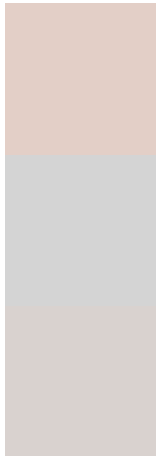
## Deuteranomaly

65.8609, 65.1564, 63.7488

## Tritanomaly

66.0281, 65.0741, 71.3679

# Monochromacy



## Original Color

64.3002, 65.0801, 63.2056

## Achromatopsia

62.5785, 65.8375, 71.6970

## Achromatomaly

62.9243, 65.3499, 68.3288

# CSS Examples

## Text

The CSS property to change the color of the text to XYZ 64.3002, 65.0801, 63.2056 is called "color". The color property can be set on classes, ids or directly on the HTML element.

This example shows how text in the color `rgb(227, 207, 199)` looks like.

```
.text, #text, p{  
    color:rgb(227, 207, 199)  
}
```

If you want to add a text shadow in that color use the text-shadow property, you can generate a text shadow directly with our [CSS Text Shadow Generator](#).

Here you see how black text with a 4 pixel rgb(227, 207, 199) colored shadow looks like.

```
.shadow{ text-shadow: 4px 4px 2px rgb(227, 207, 199) }
```

## Border

The CSS property to change the border of an element to XYZ 64.3002, 65.0801, 63.2056 is called "border". The border property can be set on classes, ids or directly on the HTML element.

This example shows the color as border, it can be applied via the CSS property "border" or "border-color".

```
.border, #border, table{ border:4px solid rgb(227, 207, 199) }
```



If only the border color should be changed use the property `border-color`.

```
.border{ border-color:rgb(227, 207, 199) }
```

If you want to add a box shadow in that color use:

Here you see how a box with a 4 pixel `rgb(227, 207, 199)` colored shadow looks like.

```
.boxshadow{ -moz-box-shadow:4px 4px 4px 4px rgb(227, 207, 199); -webkit-box-shadow:4px 4px 4px 4px rgb(227, 207, 199); box-shadow:4px 4px 4px 4px rgb(227, 207, 199) }
```

# Background

The CSS property to change the background color of an element to XYZ 64.3002, 65.0801, 63.2056 is called "background". The background property can be set on classes, ids or directly on the HTML element.

```
.background, #background, body{  
background: rgb(227, 207, 199) }
```

If only the background color should be changed can be used:

```
.background{ background-color: rgb(227,  
207, 199) }
```

This example shows the color as background, it is applied via the CSS property "background".

To optimize and compress your CSS code, you can use our [online CSS compressor and optimizer](#) based on csstidy. If you want to create a linear or radial gradient as background or border, check our [CSS Gradient Generator](#).

Hey! You found this booklet interesting? Support Converting Colors with the new Membership Option!

The pro membership hides all ads, plus gives you double the colors in the color bucket, and more awesome pro features!

**[Learn more, Memberships starting at \\$2.50/m!](#)**

**Follow me  
on Twitter!**

@ConvertingColor