

Converting Colors

XYZ(64.4324, 64.7836, 64.3737)

Have a look what the booklet for
XYZ(64.4324, 64.7836, 64.3737)
contains.

| | |
|--|----|
| XYZ(64.2925, 64.6906, 64.3563) | 3 |
| <i>Conversions</i> | 4 |
| <i>Details</i> | 6 |
| <i>Harmonies</i> | 12 |
| <i>Previews</i> | 24 |
| <i>Color Blindness Simulation</i> | 28 |
| <i>CSS Examples</i> | 31 |

Color

**XYZ(64.2925, 64.6906,
64.3563)**

Conversions

Conversions Part 1

| Format | Color |
|-------------|---------------------------|
| Hex | E3CEC9 |
| RGB | 227, 206, 201 |
| RGB Percent | 89%, 81%, 79% |
| CMY | 0.1098, 0.1921, 0.2118 |
| CMYK | 0.00, 0.09, 0.11, 0.11 |
| HSL | 12°, 32%, 84% |
| HSV | 12°, 11%, 89% |
| XYZ | 64.2925, 64.6906, 64.3563 |
| YIQ | 211.7090, 14.1210, 2.8970 |

Conversions

Conversions Part 2

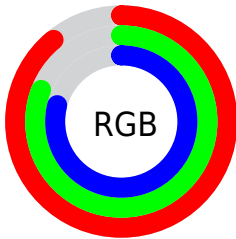
| Format | Color |
|-------------------------------------|-------------------------------|
| R _Y B | 227, 207, 201 |
| Decimal | 14929609 |
| CIE Lab | 84.32, 6.48, 5.13 |
| CIE LCh | 84, 8.264, 38.354 |
| Yxy | 64.6906, 0.3325, 0.3346 |
| Android (android.graphics.Color) | 4293119689 (0xFFE3CEC9) |
| YUV | 211.7090, -5.2795, 13.4102 |
| Hunter-Lab | 80.4305, 1.9316, 8.8605 |

Details

The XYZ color **64.2925, 64.6906, 64.3563** is a light color, and the websafe version is hex **CCCCCC**. A complement of this color would be **64.0735, 70.2047, 82.8476**, and the grayscale version is **62.4150, 65.6655, 71.5097**.

A 20% lighter version of the original color is **95.0500, 100.0000, 108.9000**, and **33.2893, 33.2210, 32.2615** is the 20% darker color. If you saturate the color by 10%, you get **57.6588, 55.3851, 49.9298**, and if you desaturate by 10%, it is **71.8392, 75.1891, 81.0356**.

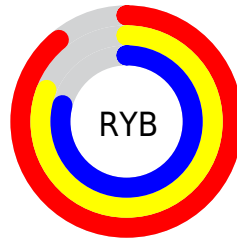
Distribution



Red (89%)

Green (81%)

Blue (79%)



Red (89%)

Yellow (81%)

Blue (79%)

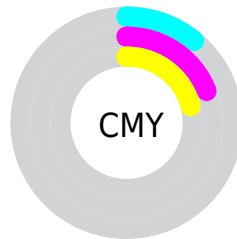


Cyan (0%)

Magenta (9%)

Yellow (11%)

Black (11%)



Cyan (11%)

Magenta (19%)

Yellow (21%)

Brightness & Saturation Gradients

These gradients show how the XYZ color 64.2925, 64.6906, 64.3563 changes by changing the brightness by 10 percent. The first figure shows a shift by +10% for each color and the second figure -10%.

Similar to the brightness gradients but the following saturation gradients show a change of the XYZ color 64.2925, 64.6906, 64.3563 by changing the saturation by 10% instead.

64.2925, 64.6906,
64.3563

64.2925, 64.6906,
64.3563

429.8306,
441.6793, 458.7179

47.1502, 47.2102,
46.4913

110.1035,
111.6049, 112.7283

33.3628, 33.2019,
32.2822

139.5028,
141.8077, 144.0724

22.5651, 22.2812,
21.3106

173.7186,
177.0200, 180.7466

14.3916, 14.0636,
13.1577

213.1161,
217.6263, 223.1694

8.4771, 8.1649,
7.4053

258.0607,
264.0110, 271.7594

4.4561, 4.2007,
3.6345

308.9177,

1.9632, 1.7864,

316.5585, 326.9351

1.4271

366.0526,
375.6531, 389.1151

■ 0.6132, 0.4787,
0.1627

■ 0.0000, 0.0000,
0.0000

■ 64.2925, 64.6906,
64.3563

■ 64.2925, 64.6906,
64.3563

■ 57.6588, 55.3851,
49.9298

■ 71.8392, 75.1891,
81.0356

■ 51.8978, 47.2218,
37.6552

■ 80.3264, 86.9120,
100.0544

■ 46.9743, 40.1590,
27.4302

■ 85.4888, 95.0710,
108.4525

■ 42.8483, 34.1492,
19.1424

■ 39.4766, 29.1412,
12.6687

■ 36.8119, 25.0797,
7.8715

■ 34.8009, 21.9035,
4.5936

■ 33.3822, 19.5442,
2.6472

■ 32.5680, 18.1094,
1.7789

Harmonies

Analogous

The Analogous color harmony consists of three colors that are next to each other on the color wheel.



65.0406, 64.6906, 68.9804



64.2925, 64.6906, 64.3563



62.7960, 64.6906, 61.4638

Triad

The Triadic color harmony groups three colors that are evenly spaced from another and form a triangle on the color wheel.



64.2925, 64.6906, 64.3563



58.2678, 64.6906, 66.7783



62.0001, 64.6906, 80.9053

Complementary

The Complementary color scheme is a pair of colors which are on the opposite of each other on the color wheel.



64.2925, 64.6906, 64.3563



64.0735, 70.2047, 82.8476

Split Complementary

Split-complementary colors differ from the complementary color scheme. The scheme consists of three colors, the original color and two neighbors of the complement color.



60.1953, 64.6906, 80.2438



64.2925, 64.6906, 64.3563



58.0643, 64.6906, 71.9141

Square

The Square scheme is like the rectangle color scheme, but the four colors are evenly spaced on the color wheel.



64.2925, 64.6906, 64.3563



59.3249, 64.6906, 62.8130



58.7633, 64.6906, 76.8893



63.7000, 64.6906, 78.6544

Rectangle

The Rectangle color scheme consists of four colors that form a rectangle on the color wheel.



64.2925, 64.6906, 64.3563



61.5878, 64.6906, 60.8197



58.7633, 64.6906, 76.8893



61.3853, 64.6906, 81.0183

Sweetspot

The Sweet Spot groups the original color and five complimentary colors.



64.2943, 64.6935, 64.3577



91.9034, 95.6386, 101.8954



65.7821, 63.3915, 78.0408



19.4951, 20.2264, 21.4191



0.0000, 0.0000, 0.0000



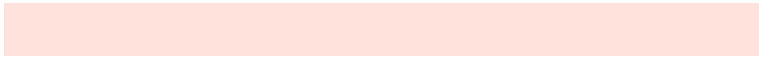
20.3446, 21.4041, 23.3091

Same Dimension

The Same Dimension uses a secret algorithm to generate beautiful new colors.



64.2943, 64.6935, 64.3577



81.3086, 80.8761, 78.5503



67.4926, 71.0901, 65.4238



14.6004, 14.8147, 14.9944



19.0573, 10.6887, 1.0587



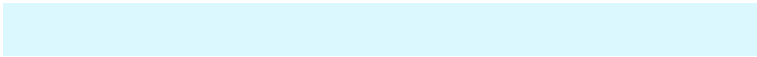
1.4718, 0.9169, 0.0994

Inverse Universe

The Inverse Universe completely reimagines the original color for something new.



64.0735, 70.2047, 82.8476



80.9608, 89.5407, 107.6237



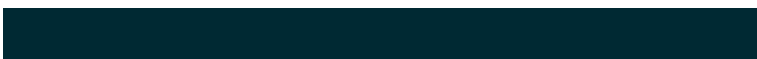
60.8111, 63.6800, 81.7601



14.5594, 15.8401, 18.4344



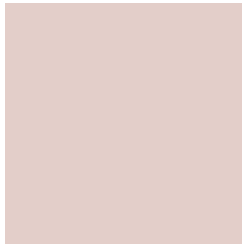
18.0813, 23.2247, 45.9130



1.3969, 1.8377, 3.4130

Previews

White Background



This preview shows how the XYZ color 64.2925, 64.6906, 64.3563 looks on a white background.

Color Contrast Check

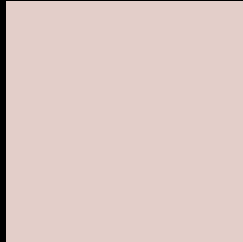
Large Text (above 18pt) WCAG AA × Fail

Any Text WCAG AA × Fail

Large Text (above 18pt) WCAG AAA × Fail

Any Text WCAG AAA × Fail

Black Background



This preview shows how the XYZ color 64.2925, 64.6906, 64.3563 looks on a black background.

Color Contrast Check

Large Text (above 18pt) WCAG AA ✓ Pass

Any Text WCAG AA ✓ Pass

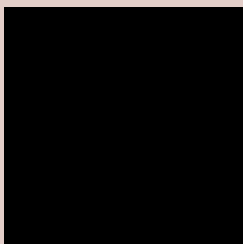
Large Text (above 18pt) WCAG AAA ✓ Pass

Any Text WCAG AAA ✓ Pass

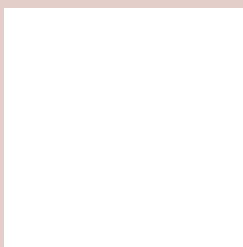
If you want to check with other color combinations, try the [Color Contrast Checker](#).

XYZ 64.2925, 64.6906, 64.3563

Background



This preview shows how black text looks on a background with the XYZ color 64.2925, 64.6906, 64.3563.



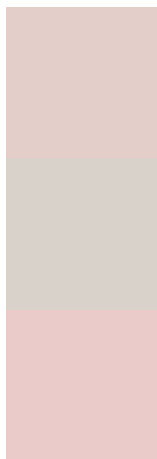
This preview shows how white text looks on a background with the XYZ color 64.2925, 64.6906,

64.3563.

Color Blindness Simulation

Color vision deficiency is a very complex topic, and I could not describe the different causes any better than Wikipedia does, so if you want to learn more, you should check out their [article about color blindness](#).

Dichromacy



Original Color

64.2925, 64.6906, 64.3563

Protanopia

62.1450, 65.0039, 65.7715

Deuteranopia

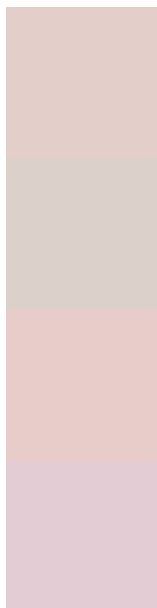
65.9483, 64.4686, 64.8449



Tritanopia

66.4552, 64.4844, 75.9620

Trichromacy



Original Color

64.2925, 64.6906, 64.3563

Protanomaly

62.9763, 65.0808, 65.1198

Deuteranomaly

65.2085, 64.4389, 64.8782

Tritanomaly

65.4714, 64.4332, 71.2735

Monochromacy



Original Color

64.2925, 64.6906, 64.3563

Achromatopsia

62.5785, 65.8375, 71.6970

Achromatomaly

63.0470, 65.3990, 68.9748

CSS Examples

Text

The CSS property to change the color of the text to XYZ 64.2925, 64.6906, 64.3563 is called "color". The color property can be set on classes, ids or directly on the HTML element.

This example shows how text in the color `rgb(227, 206, 201)` looks like.

```
.text, #text, p{  
    color:rgb(227, 206, 201)  
}
```

If you want to add a text shadow in that color use the text-shadow property, you can generate a text shadow directly with our [CSS Text Shadow Generator](#).

Here you see how black text with a 4 pixel rgb(227, 206, 201) colored shadow looks like.

```
.shadow{ text-shadow: 4px 4px 2px rgb(227, 206, 201) }
```

Border

The CSS property to change the border of an element to XYZ 64.2925, 64.6906, 64.3563 is called "border". The border property can be set on classes, ids or directly on the HTML element.

This example shows the color as border, it can be applied via the CSS property "border" or "border-color".

```
.border, #border, table{ border:4px solid rgb(227, 206, 201) }
```


If only the border color should be changed use the property `border-color`.

```
.border{ border-color:rgb(227, 206, 201) }
```

If you want to add a box shadow in that color use:

Here you see how a box with a 4 pixel `rgb(227, 206, 201)` colored shadow looks like.

```
.boxshadow{ -moz-box-shadow:4px 4px 4px  
4px rgb(227, 206, 201); -webkit-box-  
shadow:4px 4px 4px 4px rgb(227, 206, 201);  
box-shadow:4px 4px 4px 4px rgb(227, 206,  
201) }
```

Background

The CSS property to change the background color of an element to XYZ 64.2925, 64.6906, 64.3563 is called "background". The background property can be set on classes, ids or directly on the HTML element.

```
.background, #background, body{  
background: rgb(227, 206, 201) }
```

If only the background color should be changed can be used:

```
.background{ background-color: rgb(227,  
206, 201) }
```

This example shows the color as background, it is applied via the CSS property "background".

To optimize and compress your CSS code, you can use our [online CSS compressor and optimizer](#) based on csstidy. If you want to create a linear or radial gradient as background or border, check our [CSS Gradient Generator](#).

Hey! You found this booklet interesting? Support Converting Colors with the new Membership Option!

The pro membership hides all ads, plus gives you double the colors in the color bucket, and more awesome pro features!

[Learn more, Memberships starting at \\$2.50/m!](#)

**Follow me
on Twitter!**

@ConvertingColor