

Converting Colors

XYZ(64.4367, 55.9376, 45.7809)

Have a look what the booklet for
XYZ(64.4367, 55.9376, 45.7809)
contains.

XYZ(64.5111, 56.0411, 45.9450)	3
<i>Conversions</i>	4
<i>Details</i>	6
<i>Harmonies</i>	12
<i>Previews</i>	24
<i>Color Blindness Simulation</i>	28
<i>CSS Examples</i>	31

Color

**XYZ(64.5111, 56.0411,
45.9450)**

Conversions

Conversions Part 1

Format	Color
Hex	FFB2AB
RGB	255, 178, 171
RGB Percent	100%, 70%, 67%
CMY	0.0000, 0.3019, 0.3294
CMYK	0.00, 0.30, 0.33, 0.00
HSL	5°, 100%, 84%
HSV	5°, 33%, 100%
XYZ	64.5111, 56.0411, 45.9450
YIQ	200.2250, 48.1390, 14.1470

Conversions

Conversions Part 2

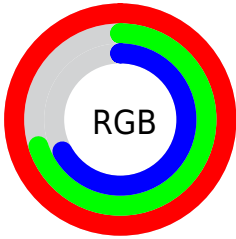
Format	Color
R _Y B	255, 179, 171
Decimal	16757419
CIE Lab	79.64, 27.18, 14.88
CIE LCh	80, 30.986, 28.701
Yxy	56.0411, 0.3875, 0.3366
Android (android.graphics.Color)	4294947499 (0xFFFFB2AB)
YUV	200.2250, -14.4079, 48.0377
Hunter-Lab	74.8606, 22.8163, 16.0137

Details

The XYZ color **64.5111, 56.0411, 45.9450** is a light color, and the websafe version is hex **FF9999**. A complement of this color would be **68.4107, 83.0097, 107.0246**, and the grayscale version is **55.1049, 57.9746, 63.1344**.

A 20% lighter version of the original color is **84.3903, 85.5966, 84.0255**, and **33.4283, 27.7349, 21.0443** is the 20% darker color. If you saturate the color by 10%, you get **58.0500, 46.6406, 32.9342**, and if you desaturate by 10%, it is **72.2363, 67.2191, 61.6916**.

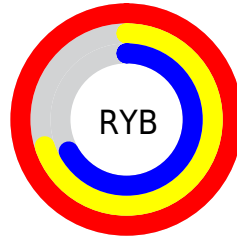
Distribution



Red (100%)

Green (70%)

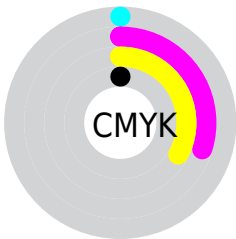
Blue (67%)



Red (100%)

Yellow (70%)

Blue (67%)

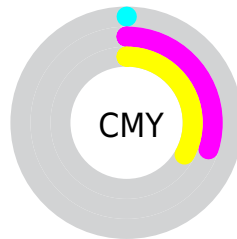


Cyan (0%)

Magenta (30%)

Yellow (33%)

Black (0%)



Cyan (0%)


Magenta (30%)


Yellow (33%)

Brightness & Saturation Gradients


These gradients show how the XYZ color 64.5111, 56.0411, 45.9450 changes by changing the brightness by 10 percent. The first figure shows a shift by +10% for each color and the second figure -10%.


Similar to the brightness gradients but the following saturation gradients show a change of the XYZ color 64.5111, 56.0411, 45.9450 by changing the saturation by 10% instead.

 64.5111, 56.0411,
45.9450

 64.5111, 56.0411,
45.9450


430.6060,
409.8464, 386.8586

 47.3280, 40.2359,
31.8541


 110.4163, 99.0647,
85.4701

 33.5040, 27.7225,
20.9862


139.8691,
127.0518, 111.7413

 22.6739, 18.1166,
12.9227


174.1425,
159.8684, 142.9098

 14.4723, 11.0337,
7.2453

213.6019,
197.8987, 179.3939

 8.5338, 6.0895,
3.5352

258.6125,
241.5273, 221.6124

 4.4930, 2.8996,
1.3740

309.5399,

 1.9847, 1.0795,

291.1385, 269.9836

0.1213

366.7493,
347.1168, 324.9262

■ 0.6253, 0.0000,
0.0000

■ 0.0000, 0.0000,
0.0000

■ 64.5111, 56.0411,
45.9450

■ 64.5111, 56.0411,
45.9450

■ 58.0500, 46.6406,
32.9342

■ 72.2363, 67.2191,
61.6916

■ 52.7815, 38.9186,
22.4999

■ 81.2836, 80.2512,
80.3141

■ 48.6336, 32.7784,
14.4716

■ 91.7124, 95.2192,
101.9473

■ 45.5245, 28.1103,
8.6569

95.0500, 100.0000,
108.9000

■ 43.3615, 24.7906,
4.8337

■ 42.0349, 22.6750,
2.7336

■ 41.5131, 21.8062,
2.0210

Harmonies

Analogous

The Analogous color harmony consists of three colors that are next to each other on the color wheel.



66.1989, 56.0411, 61.8024



64.5111, 56.0411, 45.9450



59.7523, 56.0411, 36.0926

Triad

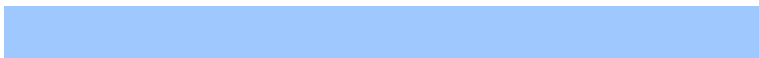
The Triadic color harmony groups three colors that are evenly spaced from another and form a triangle on the color wheel.



64.5111, 56.0411, 45.9450



43.6470, 56.0411, 44.8360



52.9935, 56.0411, 102.2764

Complementary

The Complementary color scheme is a pair of colors which are on the opposite of each other on the color wheel.



64.5111, 56.0411, 45.9450



68.4107, 83.0097, 107.0246

Split Complementary

Split-complementary colors differ from the complementary color scheme. The scheme consists of three colors, the original color and two neighbors of the complement color.



47.2658, 56.0411, 95.3855



64.5111, 56.0411, 45.9450



42.1367, 56.0411, 60.2427

Square

The Square scheme is like the rectangle color scheme, but the four colors are evenly spaced on the color wheel.



64.5111, 56.0411, 45.9450



47.7027, 56.0411, 35.5458



43.4090, 56.0411, 79.0752



59.2445, 56.0411, 96.4398

Rectangle

The Rectangle color scheme consists of four colors that form a rectangle on the color wheel.



64.5111, 56.0411, 45.9450



55.6536, 56.0411, 33.1203



43.4090, 56.0411, 79.0752



50.9464, 56.0411, 101.3508

Sweetspot

The Sweet Spot groups the original color and five complimentary colors.



64.5125, 56.0438, 45.9461



84.2044, 84.4484, 86.3574



72.7465, 57.1637, 96.0066



17.7212, 17.6416, 17.8588



0.0000, 0.0000, 0.0000



20.3446, 21.4041, 23.3091

Same Dimension

The Same Dimension uses a secret algorithm to generate beautiful new colors.



64.5125, 56.0438, 45.9461



59.8233, 49.2270, 36.4857



74.1842, 75.3870, 49.1700



18.1311, 18.2304, 18.7075



21.7333, 11.4779, 1.0700



2.1558, 1.1970, 0.1174

Inverse Universe

The Inverse Universe completely reimagines the original color for something new.



68.4107, 83.0097, 107.0246



64.2929, 80.2045, 106.7002



56.9164, 60.0211, 103.1932



18.4177, 20.2069, 23.1796



24.8200, 34.5496, 54.7952



2.4533, 3.4373, 5.3474

Previews

White Background



This preview shows how the XYZ color 64.5111, 56.0411, 45.9450 looks on a white background.

Color Contrast Check

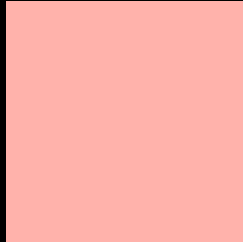
Large Text (above 18pt) WCAG AA × Fail

Any Text WCAG AA × Fail

Large Text (above 18pt) WCAG AAA × Fail

Any Text WCAG AAA × Fail

Black Background



This preview shows how the XYZ color 64.5111, 56.0411, 45.9450 looks on a black background.

Color Contrast Check

Large Text (above 18pt) WCAG AA ✓ Pass

Any Text WCAG AA ✓ Pass

Large Text (above 18pt) WCAG AAA ✓ Pass

Any Text WCAG AAA ✓ Pass

If you want to check with other color combinations, try the [Color Contrast Checker](#).

XYZ 64.5111, 56.0411, 45.9450

Background



This preview shows how black text looks on a background with the XYZ color 64.5111, 56.0411, 45.9450.



This preview shows how white text looks on a background with the XYZ color 64.5111, 56.0411,

45.9450.

Color Blindness Simulation

Color vision deficiency is a very complex topic, and I could not describe the different causes any better than Wikipedia does, so if you want to learn more, you should check out their [article about color blindness](#).

Dichromacy



Original Color

64.5111, 56.0411, 45.9450

Protanopia

53.4836, 56.2478, 51.7541

Deuteranopia

57.2534, 56.0224, 45.3319



Tritanopia

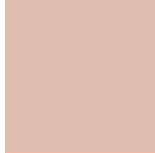
65.9506, 55.9848, 55.4743

Trichromacy



Original Color

64.5111, 56.0411, 45.9450



Protanomaly

56.7807, 55.6892, 49.3514



Deuteranomaly

59.7397, 56.0246, 45.6954



Tritanomaly

65.4056, 56.0817, 51.6336

Monochromacy



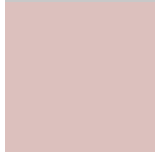
Original Color

64.5111, 56.0411, 45.9450



Achromatopsia

54.8990, 57.7580, 62.8985



Achromatomaly

57.5501, 56.5890, 56.0337

CSS Examples

Text

The CSS property to change the color of the text to XYZ 64.5111, 56.0411, 45.9450 is called "color". The color property can be set on classes, ids or directly on the HTML element.

This example shows how text in the color `rgb(255, 178, 171)` looks like.

```
.text, #text, p{  
    color:rgb(255, 178, 171)  
}
```

If you want to add a text shadow in that color use the text-shadow property, you can generate a text shadow directly with our [CSS Text Shadow Generator](#).

Here you see how black text with a 4 pixel rgb(255, 178, 171) colored shadow looks like.

```
.shadow{ text-shadow: 4px 4px 2px rgb(255, 178, 171) }
```

Border

The CSS property to change the border of an element to XYZ 64.5111, 56.0411, 45.9450 is called "border". The border property can be set on classes, ids or directly on the HTML element.

This example shows the color as border, it can be applied via the CSS property "border" or "border-color".

```
.border, #border, table{ border:4px solid rgb(255, 178, 171) }
```


If only the border color should be changed use the property `border-color`.

```
.border{ border-color:rgb(255, 178, 171) }
```

If you want to add a box shadow in that color use:

Here you see how a box with a 4 pixel `rgb(255, 178, 171)` colored shadow looks like.

```
.boxshadow{ -moz-box-shadow:4px 4px 4px  
4px rgb(255, 178, 171); -webkit-box-  
shadow:4px 4px 4px 4px rgb(255, 178, 171);  
box-shadow:4px 4px 4px 4px rgb(255, 178,  
171) }
```

Background

The CSS property to change the background color of an element to XYZ 64.5111, 56.0411, 45.9450 is called "background". The background property can be set on classes, ids or directly on the HTML element.

```
.background, #background, body{  
background: rgb(255, 178, 171) }
```

If only the background color should be changed can be used:

```
.background{ background-color: rgb(255,  
178, 171) }
```

This example shows the color as background, it is applied via the CSS property "background".

To optimize and compress your CSS code, you can use our [online CSS compressor and optimizer](#) based on csstidy. If you want to create a linear or radial gradient as background or border, check our [CSS Gradient Generator](#).

Hey! You found this booklet interesting? Support Converting Colors with the new Membership Option!

The pro membership hides all ads, plus gives you double the colors in the color bucket, and more awesome pro features!

[Learn more, Memberships starting at \\$2.50/m!](#)

**Follow me
on Twitter!**

@ConvertingColor