

Converting Colors

XYZ(64.4385, 64.8284, 67.8818)

Have a look what the booklet for
XYZ(64.4385, 64.8284, 67.8818)
contains.

XYZ(64.3851, 64.6552, 68.1177)	3
<i>Conversions</i>	4
<i>Details</i>	6
<i>Harmonies</i>	12
<i>Previews</i>	24
<i>Color Blindness Simulation</i>	28
<i>CSS Examples</i>	31

Color

**XYZ(64.3851, 64.6552,
68.1177)**

Conversions

Conversions Part 1

Format	Color
Hex	E1CECF
RGB	225, 206, 207
RGB Percent	88%, 81%, 81%
CMY	0.1176, 0.1921, 0.1882
CMYK	0.00, 0.08, 0.08, 0.12
HSL	357°, 24%, 85%
HSV	357°, 8%, 88%
XYZ	64.3851, 64.6552, 68.1177
YIQ	211.7950, 11.0030, 4.3390

Conversions

Conversions Part 2

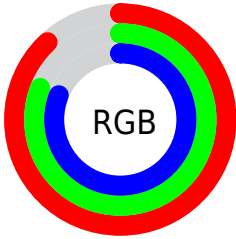
Format	Color
R _Y B	225, 206, 207
Decimal	14798543
CIE Lab	84.31, 6.77, 1.89
CIE LCh	84, 7.029, 15.584
Yxy	64.6552, 0.3266, 0.3279
Android (android.graphics.Color)	4292988623 (0xFFE1CECF)
YUV	211.7950, -2.3639, 11.5808
Hunter-Lab	80.4085, 2.2147, 6.0586

Details

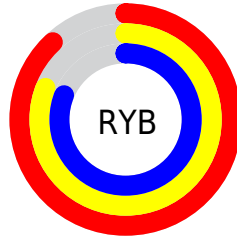
The XYZ color **64.3851, 64.6552, 68.1177** is a light color, and the websafe version is hex **CCCCCC**. A complement of this color would be **65.8358, 72.3556, 81.0207**, and the grayscale version is **62.4548, 65.7073, 71.5553**.

A 20% lighter version of the original color is **95.0500, 100.0000, 108.9000**, and **33.5556, 33.3024, 34.7964** is the 20% darker color. If you saturate the color by 10%, you get **56.9186, 53.6152, 53.6256**, and if you desaturate by 10%, it is **72.9827, 77.3924, 84.7249**.

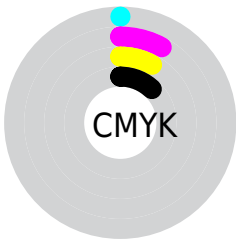
Distribution



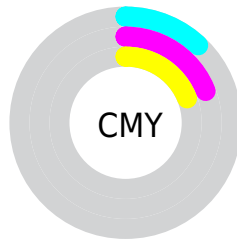
- Red (88%)
- Green (81%)
- Blue (81%)



- Red (88%)
- Yellow (81%)
- Blue (81%)



- Cyan (0%)
- Magenta (8%)
- Yellow (8%)
- Black (12%)



- Cyan (12%)
- Magenta (19%)
- Yellow (19%)

Brightness & Saturation Gradients

These gradients show how the XYZ color 64.3851, 64.6552, 68.1177 changes by changing the brightness by 10 percent. The first figure shows a shift by +10% for each color and the second figure -10%.

Similar to the brightness gradients but the following saturation gradients show a change of the XYZ color 64.3851, 64.6552, 68.1177 by changing the saturation by 10% instead.

64.3851, 64.6552,
68.1177

64.3851, 64.6552,
68.1177

430.1592,
441.5519, 472.5223

47.2255, 47.1815,
49.5262

110.2360,
111.5540, 118.1763

33.4226, 33.1792,
34.6685

139.6580,
141.7479, 150.4805

22.6112, 22.2638,
23.1262

173.8982,
176.9507, 188.1927

14.4258, 14.0508,
14.4805

213.3219,
217.5468, 231.7314

8.5011, 8.1560,
8.3131

258.2945,
263.9206, 281.5152

4.4717, 4.1950,
4.2053

309.1813,

1.9723, 1.7832,

316.4564, 337.9626

1.7386

366.3478,
375.5387, 401.4921

■ 0.6183, 0.4767,
0.3870

■ 0.0000, 0.0000,
0.0000

■ 64.3851, 64.6552,
68.1177

■ 64.3851, 64.6552,
68.1177

■ 56.9186, 53.6152,
53.6256

■ 72.9827, 77.3924,
84.7249

■ 50.5309, 44.1927,
41.1597

■ 82.7499, 91.8853,
103.5230

■ 45.1737, 36.3144,
30.6310

■ 84.8616, 94.7477,
108.4232

■ 40.7931, 29.8979,
21.9422

■ 37.3301, 24.8532,
14.9877

■ 34.7193, 21.0805,
9.6512

■ 32.8869, 18.4662,
5.8018

■ 31.7463, 16.8768,
3.2887

■ 31.1767, 16.1186,
1.9243

Harmonies

Analogous

The Analogous color harmony consists of three colors that are next to each other on the color wheel.



64.4014, 64.6552, 72.5571



64.3851, 64.6552, 68.1177



63.5743, 64.6552, 64.4440

Triad

The Triadic color harmony groups three colors that are evenly spaced from another and form a triangle on the color wheel.



64.3851, 64.6552, 68.1177



59.3369, 64.6552, 64.5607



60.7097, 64.6552, 79.0430

Complementary

The Complementary color scheme is a pair of colors which are on the opposite of each other on the color wheel.



64.3851, 64.6552, 68.1177



65.8358, 72.3556, 81.0207

Split Complementary

Split-complementary colors differ from the complementary color scheme. The scheme consists of three colors, the original color and two neighbors of the complement color.



59.3791, 64.6552, 76.7090



64.3851, 64.6552, 68.1177



58.5956, 64.6552, 68.2832

Square

The Square scheme is like the rectangle color scheme, but the four colors are evenly spaced on the color wheel.



64.3851, 64.6552, 68.1177



60.6512, 64.6552, 62.4503



58.6110, 64.6552, 72.7297



62.2615, 64.6552, 78.9941

Rectangle

The Rectangle color scheme consists of four colors that form a rectangle on the color wheel.



64.3851, 64.6552, 68.1177



62.7000, 64.6552, 62.8686



58.6110, 64.6552, 72.7297



60.2223, 64.6552, 78.5069

Sweetspot

The Sweet Spot groups the original color and five complimentary colors.



64.3869, 64.6580, 68.1191



91.5126, 94.7577, 102.0714



66.3216, 65.3865, 80.3601



19.3902, 19.9898, 21.4663



0.0000, 0.0000, 0.0000



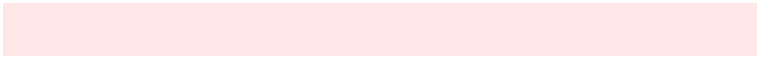
20.3446, 21.4041, 23.3091

Same Dimension

The Same Dimension uses a secret algorithm to generate beautiful new colors.



64.3869, 64.6580, 68.1191



83.7986, 83.3360, 87.1494



66.2994, 68.6773, 68.1577



13.7362, 13.7121, 14.3811



17.9437, 9.2445, 1.1035



1.2542, 0.6449, 0.1313

Inverse Universe

The Inverse Universe completely reimagines the original color for something new.



64.3869, 64.6580, 68.1191



83.7986, 83.3360, 87.1494



63.7994, 68.0659, 81.0102



13.7362, 13.7121, 14.3811



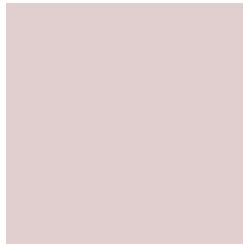
17.9437, 9.2445, 1.1035



1.2542, 0.6449, 0.1313

Previews

White Background



This preview shows how the XYZ color 64.3851, 64.6552, 68.1177 looks on a white background.

Color Contrast Check

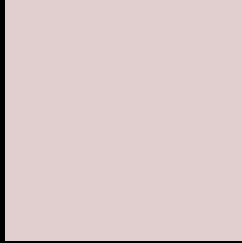
Large Text (above 18pt) WCAG AA × Fail

Any Text WCAG AA × Fail

Large Text (above 18pt) WCAG AAA × Fail

Any Text WCAG AAA × Fail

Black Background



This preview shows how the XYZ color 64.3851, 64.6552, 68.1177 looks on a black background.

Color Contrast Check

Large Text (above 18pt) WCAG AA ✓ Pass

Any Text WCAG AA ✓ Pass

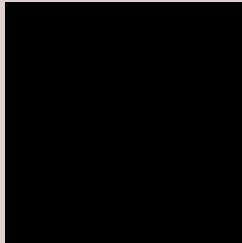
Large Text (above 18pt) WCAG AAA ✓ Pass

Any Text WCAG AAA ✓ Pass

If you want to check with other color combinations, try the [Color Contrast Checker](#).

XYZ 64.3851, 64.6552, 68.1177

Background



This preview shows how black text looks on a background with the XYZ color 64.3851, 64.6552, 68.1177.



This preview shows how white text looks on a background with the XYZ color 64.3851, 64.6552,

Color Blindness Simulation

Color vision deficiency is a very complex topic, and I could not describe the different causes any better than Wikipedia does, so if you want to learn more, you should check out their [article about color blindness](#).

Dichromacy



Original Color

64.3851, 64.6552, 68.1177

Protanopia

62.0406, 64.5005, 69.5016

Deuteranopia

66.1341, 64.8465, 68.0625



Tritanopia

66.1897, 64.6839, 76.7068

Trichromacy



Original Color

64.3851, 64.6552, 68.1177

Protanomaly

62.8545, 64.5712, 68.8252

Deuteranomaly

65.4069, 64.8257, 68.0968

Tritanomaly

65.4611, 64.7377, 73.3354

Monochromacy



Original Color

64.3851, 64.6552, 68.1177

Achromatopsia

62.5785, 65.8375, 71.6970

Achromatomaly

63.2947, 65.4980, 70.2792

CSS Examples

Text

The CSS property to change the color of the text to XYZ 64.3851, 64.6552, 68.1177 is called "color". The color property can be set on classes, ids or directly on the HTML element.

This example shows how text in the color `rgb(225, 206, 207)` looks like.

```
.text, #text, p{  
    color:rgb(225, 206, 207)  
}
```

If you want to add a text shadow in that color use the text-shadow property, you can generate a text shadow directly with our [CSS Text Shadow Generator](#).

Here you see how black text with a 4 pixel rgb(225, 206, 207) colored shadow looks like.

```
.shadow{ text-shadow: 4px 4px 2px rgb(225, 206, 207) }
```

Border

The CSS property to change the border of an element to XYZ 64.3851, 64.6552, 68.1177 is called "border". The border property can be set on classes, ids or directly on the HTML element.

This example shows the color as border, it can be applied via the CSS property "border" or "border-color".

```
.border, #border, table{ border:4px solid rgb(225, 206, 207) }
```


If only the border color should be changed use the property `border-color`.

```
.border{ border-color:rgb(225, 206, 207) }
```

If you want to add a box shadow in that color use:

Here you see how a box with a 4 pixel `rgb(225, 206, 207)` colored shadow looks like.

```
.boxshadow{ -moz-box-shadow:4px 4px 4px 4px rgb(225, 206, 207); -webkit-box-shadow:4px 4px 4px 4px rgb(225, 206, 207); box-shadow:4px 4px 4px 4px rgb(225, 206, 207) }
```

Background

The CSS property to change the background color of an element to XYZ 64.3851, 64.6552, 68.1177 is called "background". The background property can be set on classes, ids or directly on the HTML element.

```
.background, #background, body{  
background: rgb(225, 206, 207) }
```

If only the background color should be changed can be used:

```
.background{ background-color: rgb(225,  
206, 207) }
```

This example shows the color as background, it is applied via the CSS property "background".

To optimize and compress your CSS code, you can use our [online CSS compressor and optimizer](#) based on csstidy. If you want to create a linear or radial gradient as background or border, check our [CSS Gradient Generator](#).

Hey! You found this booklet interesting? Support Converting Colors with the new Membership Option!

The pro membership hides all ads, plus gives you double the colors in the color bucket, and more awesome pro features!

[Learn more, Memberships starting at \\$2.50/m!](#)

**Follow me
on Twitter!**

@ConvertingColor