

Converting Colors

XYZ(64.4973, 63.8181, 66.8385)

Have a look what the booklet for
XYZ(64.4973, 63.8181, 66.8385)
contains.

XYZ(64.3703, 63.6136, 66.6436)	3
<i>Conversions</i>	4
<i>Details</i>	6
<i>Harmonies</i>	12
<i>Previews</i>	24
<i>Color Blindness Simulation</i>	28
<i>CSS Examples</i>	31

Color

**XYZ(64.3703, 63.6136,
66.6436)**

Conversions

Conversions Part 1

Format	Color
Hex	E4CBCD
RGB	228, 203, 205
RGB Percent	89%, 80%, 80%
CMY	0.1059, 0.2039, 0.1961
CMYK	0.00, 0.11, 0.10, 0.11
HSL	355°, 32%, 85%
HSV	355°, 11%, 89%
XYZ	64.3703, 63.6136, 66.6436
YIQ	210.7030, 14.2580, 5.9220

Conversions

Conversions Part 2

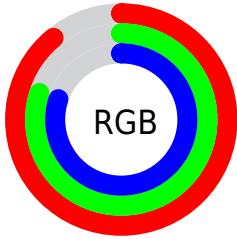
Format	Color
R_{YB}	228, 203, 205
Decimal	14994381
CIE _{Lab}	83.76, 9.07, 2.20
CIE _{LCh}	84, 9.333, 13.618
Yxy	63.6136, 0.3307, 0.3268
Android (android.graphics.Color)	4293184461 (0xFFE4CBCD)
YUV	210.7030, -2.8116, 15.1695
Hunter-Lab	79.7581, 4.4850, 6.2897

Details

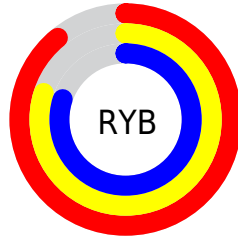
The XYZ color **64.3703, 63.6136, 66.6436** is a light color, and the websafe version is hex **CCCCCC**. A complement of this color would be **66.1019, 73.6759, 82.6920**, and the grayscale version is **61.7338, 64.9487, 70.7292**.

A 20% lighter version of the original color is **95.0500, 100.0000, 108.9000**, and **33.3466, 32.4999, 33.7937** is the 20% darker color. If you saturate the color by 10%, you get **57.0120, 52.6812, 52.5232**, and if you desaturate by 10%, it is **72.8636, 76.2711, 82.8192**.

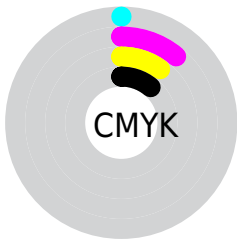
Distribution



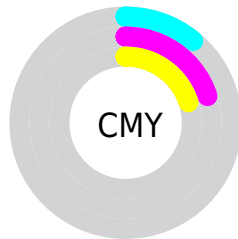
- Red (89%)
- Green (80%)
- Blue (80%)



- Red (89%)
- Yellow (80%)
- Blue (80%)



- Cyan (0%)
- Magenta (11%)
- Yellow (10%)
- Black (11%)



- Cyan (11%)
- Magenta (20%)
- Yellow (20%)

Brightness & Saturation Gradients

These gradients show how the XYZ color 64.3703, 63.6136, 66.6436 changes by changing the brightness by 10 percent. The first figure shows a shift by +10% for each color and the second figure -10%.

Similar to the brightness gradients but the following saturation gradients show a change of the XYZ color 64.3703, 63.6136, 66.6436 by changing the saturation by 10% instead.

64.3703, 63.6136,
66.6436

64.3703, 63.6136,
66.6436

430.1067,
437.7929, 467.1420

47.2135, 46.3378,
48.3353

110.2148,
110.0543, 116.0454

33.4131, 32.5125,
33.7306

139.6332,
139.9879, 147.9759

22.6038, 21.7532,
22.4110

173.8695,
174.9096, 185.2842

14.4203, 13.6757,
13.9580

213.2890,
215.2038, 228.3889

8.4972, 7.8954,
7.9531

258.2571,
261.2548, 277.7085

4.4692, 4.0281,
3.9776

309.1392,

1.9709, 1.6893,

313.4471, 333.6615

1.6131

366.3006,
372.1650, 396.6665

■ 0.6175, 0.4167,
0.3001

■ 0.0000, 0.0000,
0.0000

■ 64.3703, 63.6136,
66.6436

■ 64.3703, 63.6136,
66.6436

■ 57.0120, 52.6812,
52.5232

■ 72.8636, 76.2711,
82.8192

■ 50.7356, 43.3913,
40.3717

■ 82.5315, 90.7149,
101.1233

■ 45.4915, 35.6670,
30.1029

■ 85.8053, 95.2342,
108.4674

■ 41.2243, 29.4220,
21.6225

■ 37.8734, 24.5618,
14.8280

■ 35.3713, 20.9809,
9.6065

■ 33.6414, 18.5585,
5.8315

■ 32.5928, 17.1507,
3.3566

■ 32.1061, 16.5385,
2.0813

Harmonies

Analogous

The Analogous color harmony consists of three colors that are next to each other on the color wheel.



64.3191, 63.6136, 72.4934



64.3703, 63.6136, 66.6436



63.3580, 63.6136, 61.7740

Triad

The Triadic color harmony groups three colors that are evenly spaced from another and form a triangle on the color wheel.



64.3703, 63.6136, 66.6436



57.7875, 63.6136, 61.4183



59.3592, 63.6136, 80.6544

Complementary

The Complementary color scheme is a pair of colors which are on the opposite of each other on the color wheel.



64.3703, 63.6136, 66.6436



66.1019, 73.6759, 82.6920

Split Complementary

Split-complementary colors differ from the complementary color scheme. The scheme consists of three colors, the original color and two neighbors of the complement color.



57.6572, 63.6136, 77.3371



64.3703, 63.6136, 66.6436



56.7639, 63.6136, 66.1328

Square

The Square scheme is like the rectangle color scheme, but the four colors are evenly spaced on the color wheel.



64.3703, 63.6136, 66.6436



59.5406, 63.6136, 58.8741



56.7168, 63.6136, 71.9530



61.3945, 63.6136, 80.8104

Rectangle

The Rectangle color scheme consists of four colors that form a rectangle on the color wheel.



64.3703, 63.6136, 66.6436



62.2291, 63.6136, 59.6468



56.7168, 63.6136, 71.9530



58.7302, 63.6136, 79.8639

Sweetspot

The Sweet Spot groups the original color and five complimentary colors.



64.3721, 63.6164, 66.6450



91.5451, 94.7707, 102.2428



66.6993, 64.4714, 82.3284



19.3989, 19.9933, 21.5124



0.0000, 0.0000, 0.0000



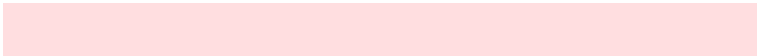
20.3446, 21.4041, 23.3091

Same Dimension

The Same Dimension uses a secret algorithm to generate beautiful new colors.



64.3721, 63.6164, 66.6450



80.8436, 78.8317, 81.8303



66.6755, 68.6064, 66.2314



14.4235, 14.3866, 15.1644



18.5560, 9.5566, 1.2912



1.3876, 0.7127, 0.1814

Inverse Universe

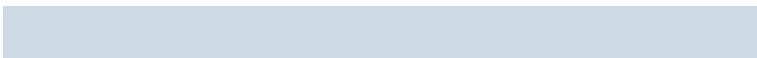
The Inverse Universe completely reimagines the original color for something new.



64.3721, 63.6164, 66.6450



80.8436, 78.8317, 81.8303



63.5980, 68.2272, 83.2168



14.4235, 14.3866, 15.1644



18.5560, 9.5566, 1.2912



1.3876, 0.7127, 0.1814

Previews

White Background



This preview shows how the XYZ color 64.3703, 63.6136, 66.6436 looks on a white background.

Color Contrast Check

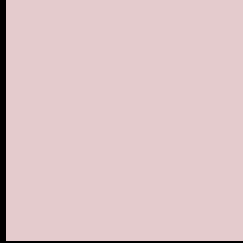
Large Text (above 18pt) WCAG AA × Fail

Any Text WCAG AA × Fail

Large Text (above 18pt) WCAG AAA × Fail

Any Text WCAG AAA × Fail

Black Background



This preview shows how the XYZ color 64.3703, 63.6136, 66.6436 looks on a black background.

Color Contrast Check

Large Text (above 18pt) WCAG AA ✓ Pass

Any Text WCAG AA ✓ Pass

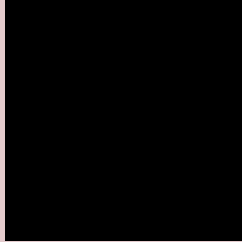
Large Text (above 18pt) WCAG AAA ✓ Pass

Any Text WCAG AAA ✓ Pass

If you want to check with other color combinations, try the [Color Contrast Checker](#).

XYZ 64.3703, 63.6136, 66.6436

Background



This preview shows how black text looks on a background with the XYZ color 64.3703, 63.6136, 66.6436.



This preview shows how white text looks on a background with the XYZ color 64.3703, 63.6136,

Color Blindness Simulation

Color vision deficiency is a very complex topic, and I could not describe the different causes any better than Wikipedia does, so if you want to learn more, you should check out their [article about color blindness](#).

Dichromacy



Original Color

64.3703, 63.6136, 66.6436

Protanopia

61.3816, 63.8120, 68.7563

Deuteranopia

64.7731, 63.4718, 66.5950



Tritanopia

66.0442, 63.6060, 74.4419

Trichromacy



Original Color

64.3703, 63.6136, 66.6436

Protanomaly

62.2472, 63.5530, 68.0177

Deuteranomaly

64.4531, 63.3069, 66.5800

Tritanomaly

65.4439, 63.7032, 71.7975

Monochromacy



Original Color

64.3703, 63.6136, 66.6436

Achromatopsia

61.9161, 65.1406, 70.9381

Achromatomaly

62.6798, 64.4669, 69.4614

CSS Examples

Text

The CSS property to change the color of the text to XYZ 64.3703, 63.6136, 66.6436 is called "color". The color property can be set on classes, ids or directly on the HTML element.

This example shows how text in the color rgb(228, 203, 205) looks like.

```
.text, #text, p{  
    color:rgb(228, 203, 205)  
}
```

If you want to add a text shadow in that color use the text-shadow property, you can generate a text shadow directly with our [CSS Text Shadow Generator](#).

Here you see how black text with a 4 pixel rgb(228, 203, 205) colored shadow looks like.

```
.shadow{ text-shadow: 4px 4px 2px rgb(228, 203, 205) }
```

Border

The CSS property to change the border of an element to XYZ 64.3703, 63.6136, 66.6436 is called "border". The border property can be set on classes, ids or directly on the HTML element.

This example shows the color as border, it can be applied via the CSS property "border" or "border-color".

```
.border, #border, table{ border:4px solid rgb(228, 203, 205) }
```


If only the border color should be changed use the property `border-color`.

```
.border{ border-color:rgb(228, 203, 205) }
```

If you want to add a box shadow in that color use:

Here you see how a box with a 4 pixel `rgb(228, 203, 205)` colored shadow looks like.

```
.boxshadow{ -moz-box-shadow:4px 4px 4px  
4px rgb(228, 203, 205); -webkit-box-  
shadow:4px 4px 4px 4px rgb(228, 203, 205);  
box-shadow:4px 4px 4px 4px rgb(228, 203,  
205) }
```

Background

The CSS property to change the background color of an element to XYZ 64.3703, 63.6136, 66.6436 is called "background". The background property can be set on classes, ids or directly on the HTML element.

```
.background, #background, body{  
background: rgb(228, 203, 205) }
```

If only the background color should be changed can be used:

```
.background{ background-color: rgb(228,  
203, 205) }
```

This example shows the color as background, it is applied via the CSS property "background".

To optimize and compress your CSS code, you can use our [online CSS compressor and optimizer](#) based on csstidy. If you want to create a linear or radial gradient as background or border, check our [CSS Gradient Generator](#).

Hey! You found this booklet interesting? Support Converting Colors with the new Membership Option!

The pro membership hides all ads, plus gives you double the colors in the color bucket, and more awesome pro features!

[Learn more, Memberships starting at \\$2.50/m!](#)

**Follow me
on Twitter!**

@ConvertingColor