

Converting Colors

XYZ(64.5010, 63.7052, 70.9518)

Have a look what the booklet for
XYZ(64.5010, 63.7052, 70.9518)
contains.

XYZ(64.6036, 63.6341, 71.1650)	3
<i>Conversions</i>	4
<i>Details</i>	6
<i>Harmonies</i>	12
<i>Previews</i>	24
<i>Color Blindness Simulation</i>	28
<i>CSS Examples</i>	31

Color

**XYZ(64.6036, 63.6341,
71.1650)**

Conversions

Conversions Part 1

Format	Color
Hex	E2CBD4
RGB	226, 203, 212
RGB Percent	89%, 80%, 83%
CMY	0.1137, 0.2039, 0.1686
CMYK	0.00, 0.10, 0.06, 0.11
HSL	337°, 28%, 84%
HSV	337°, 10%, 89%
XYZ	64.6036, 63.6341, 71.1650
YIQ	210.9030, 10.8190, 7.6750

Conversions

Conversions Part 2

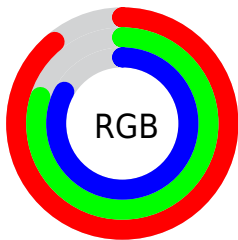
Format	Color
R _Y B	226, 203, 212
Decimal	14863316
CIE Lab	83.77, 9.55, -1.54
CIE LCh	84, 9.678, 350.840
Yxy	63.6341, 0.3240, 0.3191
Android (android.graphics.Color)	4293053396 (0xFFE2CBD4)
YUV	210.9030, 0.5408, 13.2401
Hunter-Lab	79.7710, 4.9614, 2.9461

Details

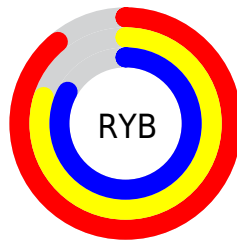
The XYZ color **64.6036, 63.6341, 71.1650** is a light color, and the websafe version is hex **CCCCCC**. A complement of this color would be **64.3518, 72.1005, 76.1742**, and the grayscale version is **61.8459, 65.0667, 70.8576**.

A 20% lighter version of the original color is **95.0500, 100.0000, 108.9000**, and **33.6278, 32.5871, 36.4159** is the 20% darker color. If you saturate the color by 10%, you get **57.9886, 53.0638, 60.7589**, and if you desaturate by 10%, it is **72.1481, 75.8252, 82.6122**.

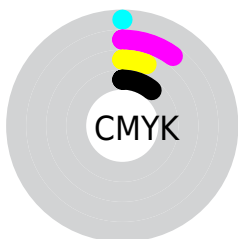
Distribution



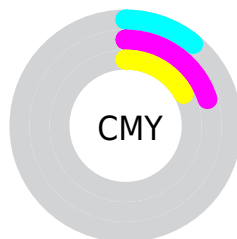
- Red (89%)
- Green (80%)
- Blue (83%)



- Red (89%)
- Yellow (80%)
- Blue (83%)



- Cyan (0%)
- Magenta (10%)
- Yellow (6%)
- Black (11%)



- Cyan (11%)
- Magenta (20%)
- Yellow (17%)

Brightness & Saturation Gradients

These gradients show how the XYZ color 64.6036, 63.6341, 71.1650 changes by changing the brightness by 10 percent. The first figure shows a shift by +10% for each color and the second figure -10%.

Similar to the brightness gradients but the following saturation gradients show a change of the XYZ color 64.6036, 63.6341, 71.1650 by changing the saturation by 10% instead.

64.6036, 63.6341,
71.1650

64.6036, 63.6341,
71.1650

430.9339,
437.8671, 483.5292

47.4032, 46.3544,
51.9942

110.5486,
110.0838, 122.5653

33.5638, 32.5256,
36.6182

140.0240,
140.0226, 155.6319

22.7200, 21.7632,
24.6186

174.3218,
174.9499, 194.1674

14.5065, 13.6830,
15.5767

213.8073,
215.2500, 238.5905

8.5578, 7.9005,
9.0740

258.8459,
261.3074, 289.3197

4.5087, 4.0314,
4.6920

309.8030,

1.9937, 1.6911,

313.5064, 346.7735

2.0122

367.0438,
372.2316, 411.3705

■ 0.6304, 0.4179,
0.5627

■ 0.0000, 0.0000,
0.0000

■ 64.6036, 63.6341,
71.1650

■ 64.6036, 63.6341,
71.1650

■ 57.9886, 53.0638,
60.7589

■ 72.1481, 75.8252,
82.6122

■ 52.2605, 44.0373,
51.3593

■ 80.6518, 89.6930,
95.1257

■ 47.3815, 36.4840,
42.9356

■ 84.8983, 94.7985,
106.9841

■ 43.3084, 30.3244,
35.4537

■ 85.1743, 94.9089,
108.4378

■ 39.9946, 25.4715,
28.8775

■ 37.3880, 21.8285,
23.1682

■ 35.4297, 19.2846,
18.2834

■ 34.0500, 17.7085,
14.1758

■ 33.1429, 16.8804,
10.8338

Harmonies

Analogous

The Analogous color harmony consists of three colors that are next to each other on the color wheel.



63.7039, 63.6341, 76.9367



64.6036, 63.6341, 71.1650



64.3791, 63.6341, 65.2092

Triad

The Triadic color harmony groups three colors that are evenly spaced from another and form a triangle on the color wheel.



64.6036, 63.6341, 71.1650



59.0413, 63.6341, 58.9225



57.9403, 63.6341, 78.7552

Complementary

The Complementary color scheme is a pair of colors which are on the opposite of each other on the color wheel.



64.6036, 63.6341, 71.1650



64.3518, 72.1005, 76.1742

Split Complementary

Split-complementary colors differ from the complementary color scheme. The scheme consists of three colors, the original color and two neighbors of the complement color.



56.7460, 63.6341, 73.5307



64.6036, 63.6341, 71.1650



57.3712, 63.6341, 62.1614

Square

The Square scheme is like the rectangle color scheme, but the four colors are evenly spaced on the color wheel.



64.6036, 63.6341, 71.1650



61.1346, 63.6341, 58.3713



56.5401, 63.6341, 67.4418



59.8346, 63.6341, 81.4845

Rectangle

The Rectangle color scheme consists of four colors that form a rectangle on the color wheel.



64.6036, 63.6341, 71.1650



63.6243, 63.6341, 61.9174



56.5401, 63.6341, 67.4418



57.4455, 63.6341, 77.2187

Sweetspot

The Sweet Spot groups the original color and five complimentary colors.



64.6054, 63.6369, 71.1664



91.9170, 94.9195, 104.2012



63.6415, 62.9270, 80.7441



19.4989, 20.0333, 22.0392



0.0000, 0.0000, 0.0000



20.3446, 21.4041, 23.3091

Same Dimension

The Same Dimension uses a secret algorithm to generate beautiful new colors.



64.6054, 63.6369, 71.1664



83.1976, 80.8643, 90.8631



64.0488, 64.2897, 65.5367



13.9281, 13.7889, 15.3918



18.9622, 9.6519, 6.4666



1.3574, 0.6862, 0.6749

Inverse Universe

The Inverse Universe completely reimagines the original color for something new.



64.6054, 63.6369, 71.1664



83.1976, 80.8643, 90.8631



64.9332, 71.3393, 82.2997



13.9281, 13.7889, 15.3918



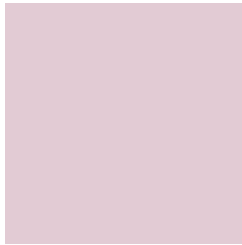
18.9622, 9.6519, 6.4666



1.3574, 0.6862, 0.6749

Previews

White Background



This preview shows how the XYZ color 64.6036, 63.6341, 71.1650 looks on a white background.

Color Contrast Check

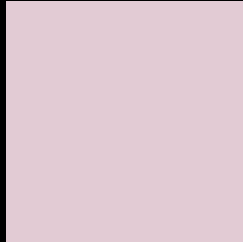
Large Text (above 18pt) WCAG AA × Fail

Any Text WCAG AA × Fail

Large Text (above 18pt) WCAG AAA × Fail

Any Text WCAG AAA × Fail

Black Background



This preview shows how the XYZ color 64.6036, 63.6341, 71.1650 looks on a black background.

Color Contrast Check

Large Text (above 18pt) WCAG AA ✓ Pass

Any Text WCAG AA ✓ Pass

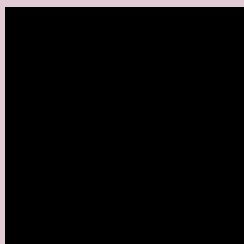
Large Text (above 18pt) WCAG AAA ✓ Pass

Any Text WCAG AAA ✓ Pass

If you want to check with other color combinations, try the [Color Contrast Checker](#).

XYZ 64.6036, 63.6341, 71.1650

Background



This preview shows how black text looks on a background with the XYZ color 64.6036, 63.6341, 71.1650.



This preview shows how white text looks on a background with the XYZ color 64.6036, 63.6341,

71.1650.

Color Blindness Simulation

Color vision deficiency is a very complex topic, and I could not describe the different causes any better than Wikipedia does, so if you want to learn more, you should check out their [article about color blindness](#).

Dichromacy



Original Color

64.6036, 63.6341, 71.1650

Protanopia

61.6856, 63.8669, 73.3663

Deuteranopia

64.9991, 63.4885, 71.1160



Tritanopia

65.4540, 63.6339, 75.1624

Trichromacy



Original Color

64.6036, 63.6341, 71.1650

Protanomaly

62.5278, 63.5966, 72.5981

Deuteranomaly

64.6827, 63.3254, 71.1012

Tritanomaly

65.1938, 63.5298, 73.7921

Monochromacy



Original Color

64.6036, 63.6341, 71.1650

Achromatopsia

61.9161, 65.1406, 70.9381

Achromatomaly

62.6326, 64.4138, 70.7600

CSS Examples

Text

The CSS property to change the color of the text to XYZ 64.6036, 63.6341, 71.1650 is called "color". The color property can be set on classes, ids or directly on the HTML element.

This example shows how text in the color `rgb(226, 203, 212)` looks like.

```
.text, #text, p{  
    color:rgb(226, 203, 212)  
}
```

If you want to add a text shadow in that color use the text-shadow property, you can generate a text shadow directly with our [CSS Text Shadow Generator](#).

Here you see how black text with a 4 pixel rgb(226, 203, 212) colored shadow looks like.

```
.shadow{ text-shadow: 4px 4px 2px rgb(226, 203, 212) }
```

Border

The CSS property to change the border of an element to XYZ 64.6036, 63.6341, 71.1650 is called "border". The border property can be set on classes, ids or directly on the HTML element.

This example shows the color as border, it can be applied via the CSS property "border" or "border-color".

```
.border, #border, table{ border:4px solid rgb(226, 203, 212) }
```


If only the border color should be changed use the property `border-color`.

```
.border{ border-color:rgb(226, 203, 212) }
```

If you want to add a box shadow in that color use:

Here you see how a box with a 4 pixel `rgb(226, 203, 212)` colored shadow looks like.

```
.boxshadow{ -moz-box-shadow:4px 4px 4px  
4px rgb(226, 203, 212); -webkit-box-  
shadow:4px 4px 4px 4px rgb(226, 203, 212);  
box-shadow:4px 4px 4px 4px rgb(226, 203,  
212) }
```

Background

The CSS property to change the background color of an element to XYZ 64.6036, 63.6341, 71.1650 is called "background". The background property can be set on classes, ids or directly on the HTML element.

```
.background, #background, body{  
background: rgb(226, 203, 212) }
```

If only the background color should be changed can be used:

```
.background{ background-color: rgb(226,  
203, 212) }
```

This example shows the color as background, it is applied via the CSS property "background".

To optimize and compress your CSS code, you can use our [online CSS compressor and optimizer](#) based on csstidy. If you want to create a linear or radial gradient as background or border, check our [CSS Gradient Generator](#).

Hey! You found this booklet interesting? Support Converting Colors with the new Membership Option!

The pro membership hides all ads, plus gives you double the colors in the color bucket, and more awesome pro features!

[Learn more, Memberships starting at \\$2.50/m!](#)

**Follow me
on Twitter!**

@ConvertingColor