

Converting Colors

XYZ(64.5249, 64.1091, 67.6946)

Have a look what the booklet for
XYZ(64.5249, 64.1091, 67.6946)
contains.

XYZ(64.5339, 64.0216, 67.9876)	3
<i>Conversions</i>	4
<i>Details</i>	6
<i>Harmonies</i>	12
<i>Previews</i>	24
<i>Color Blindness Simulation</i>	28
<i>CSS Examples</i>	31

Color

**XYZ(64.5339, 64.0216,
67.9876)**

Conversions

Conversions Part 1

Format	Color
Hex	E3CCCF
RGB	227, 204, 207
RGB Percent	89%, 80%, 81%
CMY	0.1098, 0.2000, 0.1882
CMYK	0.00, 0.10, 0.09, 0.11
HSL	352°, 29%, 85%
HSV	352°, 10%, 89%
XYZ	64.5339, 64.0216, 67.9876
YIQ	211.2190, 12.7450, 5.8090

Conversions

Conversions Part 2

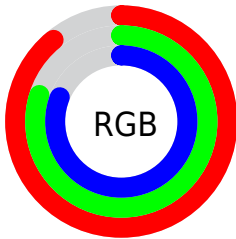
Format	Color
R _Y B	227, 204, 207
Decimal	14929103
CIE Lab	83.98, 8.53, 1.43
CIE LCh	84, 8.644, 9.525
Yxy	64.0216, 0.3283, 0.3257
Android (android.graphics.Color)	4293119183 (0xFFE3CCCF)
YUV	211.2190, -2.0800, 13.8399
Hunter-Lab	80.0135, 3.9433, 5.6306

Details

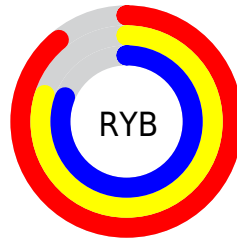
The XYZ color **64.5339, 64.0216, 67.9876** is a light color, and the websafe version is hex **CCCCCC**. A complement of this color would be **65.8279, 73.1590, 81.1762**, and the grayscale version is **62.0705, 65.3030, 71.1150**.

A 20% lighter version of the original color is **95.0500, 100.0000, 108.9000**, and **33.6694, 32.8833, 34.7095** is the 20% darker color. If you saturate the color by 10%, you get **57.2623, 53.1021, 54.3908**, and if you desaturate by 10%, it is **72.8973, 76.6402, 83.4389**.

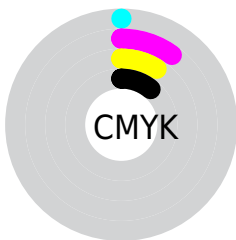
Distribution



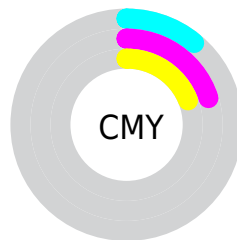
- Red (89%)
- Green (80%)
- Blue (81%)



- Red (89%)
- Yellow (80%)
- Blue (81%)



- Cyan (0%)
- Magenta (10%)
- Yellow (9%)
- Black (11%)



- Cyan (11%)
- Magenta (20%)
- Yellow (19%)

Brightness & Saturation Gradients

These gradients show how the XYZ color 64.5339, 64.0216, 67.9876 changes by changing the brightness by 10 percent. The first figure shows a shift by +10% for each color and the second figure -10%.

Similar to the brightness gradients but the following saturation gradients show a change of the XYZ color 64.5339, 64.0216, 67.9876 by changing the saturation by 10% instead.

64.5339, 64.0216,
67.9876

64.5339, 64.0216,
67.9876

430.6868,
439.2676, 472.0489

47.3465, 46.6682,
49.4210

110.4489,
110.6420, 117.9884

33.5188, 32.7734,
34.5856

139.9073,
140.6778, 150.2598

22.6853, 21.9529,
23.0629

174.1867,
175.7099, 187.9365

14.4807, 13.8223,
14.4342

213.6525,
216.1226, 231.4371

8.5397, 7.9972,
8.2811

258.6701,
262.3003, 281.1801

4.4969, 4.0931,
4.1850

309.6047,

1.9869, 1.7258,

314.6275, 337.5840

1.7274

366.8219,
373.4884, 401.0675

■ 0.6266, 0.4403,
0.3794

■ 0.0000, 0.0000,
0.0000

■ 64.5339, 64.0216,
67.9876

■ 64.5339, 64.0216,
67.9876

■ 57.2623, 53.1021,
54.3908

■ 72.8973, 76.6402,
83.4389

■ 51.0321, 43.8009,
42.5747

■ 82.3894, 91.0172,
100.8065

■ 45.7971, 36.0436,
32.4665

■ 85.4889, 95.0711,
108.4525

■ 41.5053, 29.7464,
23.9869

■ 38.1000, 24.8177,
17.0503

■ 35.5184, 21.1554,
11.5630

■ 33.6894, 18.6431,
7.4212

■ 32.5293, 17.1427,
4.5069

■ 31.9079, 16.4227,
2.6882

Harmonies

Analogous

The Analogous color harmony consists of three colors that are next to each other on the color wheel.



64.3460, 64.0216, 73.4418



64.5339, 64.0216, 67.9876



63.7191, 64.0216, 63.2451

Triad

The Triadic color harmony groups three colors that are evenly spaced from another and form a triangle on the color wheel.



64.5339, 64.0216, 67.9876



58.5498, 64.0216, 61.9282



59.5787, 64.0216, 80.0022

Complementary

The Complementary color scheme is a pair of colors which are on the opposite of each other on the color wheel.



64.5339, 64.0216, 67.9876



65.8279, 73.1590, 81.1762

Split Complementary

Split-complementary colors differ from the complementary color scheme. The scheme consists of three colors, the original color and two neighbors of the complement color.



58.0695, 64.0216, 76.5982



64.5339, 64.0216, 67.9876



57.4842, 64.0216, 66.1042

Square

The Square scheme is like the rectangle color scheme, but the four colors are evenly spaced on the color wheel.



64.5339, 64.0216, 67.9876



60.2467, 64.0216, 59.8690



57.3102, 64.0216, 71.4585



61.4586, 64.0216, 80.5713

Rectangle

The Rectangle color scheme consists of four colors that form a rectangle on the color wheel.



64.5339, 64.0216, 67.9876



62.7267, 64.0216, 61.0552



57.3102, 64.0216, 71.4585



59.0123, 64.0216, 79.1434

Sweetspot

The Sweet Spot groups the original color and five complimentary colors.



64.5357, 64.0244, 67.9890



91.6050, 94.7947, 102.5583



66.1797, 64.5713, 81.6493



19.4150, 19.9997, 21.5971



0.0000, 0.0000, 0.0000



20.3446, 21.4041, 23.3091

Same Dimension

The Same Dimension uses a secret algorithm to generate beautiful new colors.



64.5357, 64.0244, 67.9890



82.0607, 80.4095, 84.8762



66.2315, 67.9968, 66.7640



14.4530, 14.3984, 15.3201



18.6323, 9.5871, 1.6926



1.4016, 0.7184, 0.2556

Inverse Universe

The Inverse Universe completely reimagines the original color for something new.



64.5357, 64.0244, 67.9890



82.0607, 80.4095, 84.8762



63.9879, 68.8228, 82.5854



14.4530, 14.3984, 15.3201



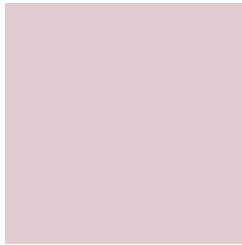
18.6323, 9.5871, 1.6926



1.4016, 0.7184, 0.2556

Previews

White Background



This preview shows how the XYZ color 64.5339, 64.0216, 67.9876 looks on a white background.

Color Contrast Check

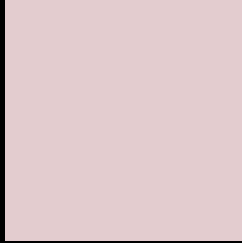
Large Text (above 18pt) WCAG AA × Fail

Any Text WCAG AA × Fail

Large Text (above 18pt) WCAG AAA × Fail

Any Text WCAG AAA × Fail

Black Background



This preview shows how the XYZ color 64.5339, 64.0216, 67.9876 looks on a black background.

Color Contrast Check

Large Text (above 18pt) WCAG AA ✓ Pass

Any Text WCAG AA ✓ Pass

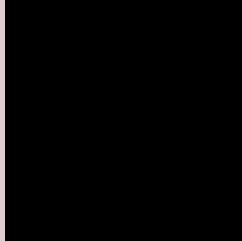
Large Text (above 18pt) WCAG AAA ✓ Pass

Any Text WCAG AAA ✓ Pass

If you want to check with other color combinations, try the [Color Contrast Checker](#).

XYZ 64.5339, 64.0216, 67.9876

Background



This preview shows how black text looks on a background with the XYZ color 64.5339, 64.0216, 67.9876.



This preview shows how white text looks on a background with the XYZ color 64.5339, 64.0216,

67.9876.

Color Blindness Simulation

Color vision deficiency is a very complex topic, and I could not describe the different causes any better than Wikipedia does, so if you want to learn more, you should check out their [article about color blindness](#).

Dichromacy



Original Color

64.5339, 64.0216, 67.9876

Protanopia

61.6293, 63.9110, 70.0606

Deuteranopia

65.2515, 64.0399, 67.9533



Tritanopia

66.0885, 63.9610, 75.1921

Trichromacy



Original Color

64.5339, 64.0216, 67.9876

Protanomaly

62.7349, 64.1345, 69.3943

Deuteranomaly

64.9315, 63.8749, 67.9383

Tritanomaly

65.4884, 64.0609, 72.5317

Monochromacy



Original Color

64.5339, 64.0216, 67.9876

Achromatopsia

61.9161, 65.1406, 70.9381

Achromatomaly

62.8040, 64.5166, 70.1156

CSS Examples

Text

The CSS property to change the color of the text to XYZ 64.5339, 64.0216, 67.9876 is called "color". The color property can be set on classes, ids or directly on the HTML element.

This example shows how text in the color `rgb(227, 204, 207)` looks like.

```
.text, #text, p{  
    color:rgb(227, 204, 207)  
}
```

If you want to add a text shadow in that color use the text-shadow property, you can generate a text shadow directly with our [CSS Text Shadow Generator](#).

Here you see how black text with a 4 pixel rgb(227, 204, 207) colored shadow looks like.

```
.shadow{ text-shadow: 4px 4px 2px rgb(227, 204, 207) }
```

Border

The CSS property to change the border of an element to XYZ 64.5339, 64.0216, 67.9876 is called "border". The border property can be set on classes, ids or directly on the HTML element.

This example shows the color as border, it can be applied via the CSS property "border" or "border-color".

```
.border, #border, table{ border:4px solid rgb(227, 204, 207) }
```


If only the border color should be changed use the property `border-color`.

```
.border{ border-color:rgb(227, 204, 207) }
```

If you want to add a box shadow in that color use:

Here you see how a box with a 4 pixel `rgb(227, 204, 207)` colored shadow looks like.

```
.boxshadow{ -moz-box-shadow:4px 4px 4px  
4px rgb(227, 204, 207); -webkit-box-  
shadow:4px 4px 4px 4px rgb(227, 204, 207);  
box-shadow:4px 4px 4px 4px rgb(227, 204,  
207) }
```

Background

The CSS property to change the background color of an element to XYZ 64.5339, 64.0216, 67.9876 is called "background". The background property can be set on classes, ids or directly on the HTML element.

```
.background, #background, body{  
background: rgb(227, 204, 207) }
```

If only the background color should be changed can be used:

```
.background{ background-color: rgb(227,  
204, 207) }
```

This example shows the color as background, it is applied via the CSS property "background".

To optimize and compress your CSS code, you can use our [online CSS compressor and optimizer](#) based on csstidy. If you want to create a linear or radial gradient as background or border, check our [CSS Gradient Generator](#).

Hey! You found this booklet interesting? Support Converting Colors with the new Membership Option!

The pro membership hides all ads, plus gives you double the colors in the color bucket, and more awesome pro features!

[Learn more, Memberships starting at \\$2.50/m!](#)

**Follow me
on Twitter!**

@ConvertingColor