

Converting Colors

XYZ(64.5342, 63.3751, 63.0376)

Have a look what the booklet for
XYZ(64.5342, 63.3751, 63.0376)
contains.

| | |
|--|----|
| XYZ(64.3843, 63.3535, 62.8679) | 3 |
| <i>Conversions</i> | 4 |
| <i>Details</i> | 6 |
| <i>Harmonies</i> | 12 |
| <i>Previews</i> | 24 |
| <i>Color Blindness Simulation</i> | 28 |
| <i>CSS Examples</i> | 31 |

Color

**XYZ(64.3843, 63.3535,
62.8679)**

Conversions

Conversions Part 1

| Format | Color |
|-------------|---------------------------|
| Hex | E7CAC7 |
| RGB | 231, 202, 199 |
| RGB Percent | 91%, 79%, 78% |
| CMY | 0.0941, 0.2078, 0.2196 |
| CMYK | 0.00, 0.13, 0.14, 0.09 |
| HSL | 6°, 40%, 84% |
| HSV | 6°, 14%, 91% |
| XYZ | 64.3843, 63.3535, 62.8679 |
| YIQ | 210.3290, 18.2470, 5.2150 |

Conversions

Conversions Part 2

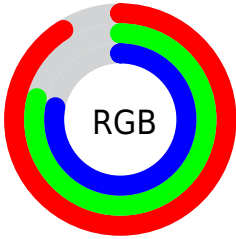
| Format | Color |
|-------------------------------------|-------------------------------|
| R _Y B | 231, 202, 199 |
| Decimal | 15190727 |
| CIE Lab | 83.63, 9.69, 5.23 |
| CIE LCh | 84, 11.012, 28.368 |
| Yxy | 63.3535, 0.3378, 0.3324 |
| Android (android.graphics.Color) | 4293380807 (0xFFE7CAC7) |
| YUV | 210.3290, -5.5852, 18.1285 |
| Hunter-Lab | 79.5949, 5.0975, 8.8863 |

Details

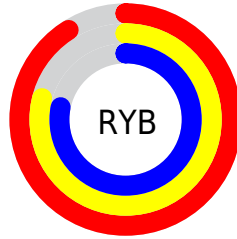
The XYZ color **64.3843, 63.3535, 62.8679** is a light color, and the websafe version is hex **FFCCCC**. A complement of this color would be **65.7200, 73.3968, 86.3050**, and the grayscale version is **61.5033, 64.7063, 70.4651**.

A 20% lighter version of the original color is **95.0500, 100.0000, 108.9000**, and **33.3799, 32.3381, 31.2706** is the 20% darker color. If you saturate the color by 10%, you get **57.3209, 53.1977, 48.2702**, and if you desaturate by 10%, it is **72.5245, 75.0101, 79.8346**.

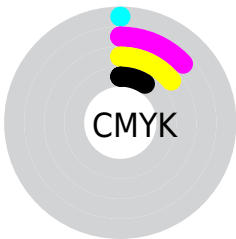
Distribution



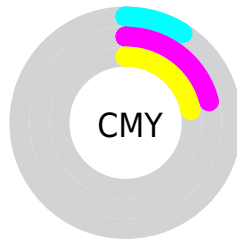
- Red (91%)
- Green (79%)
- Blue (78%)



- Red (91%)
- Yellow (79%)
- Blue (78%)



- Cyan (0%)
- Magenta (13%)
- Yellow (14%)
- Black (9%)



- Cyan (9%)
- Magenta (21%)
- Yellow (22%)

Brightness & Saturation Gradients

These gradients show how the XYZ color 64.3843, 63.3535, 62.8679 changes by changing the brightness by 10 percent. The first figure shows a shift by +10% for each color and the second figure -10%.

Similar to the brightness gradients but the following saturation gradients show a change of the XYZ color 64.3843, 63.3535, 62.8679 by changing the saturation by 10% instead.

64.3843, 63.3535,
62.8679

64.3843, 63.3535,
62.8679

430.1564,
436.8513, 453.1847

47.2248, 46.1272,
45.2940

110.2349,
109.6793, 110.5626

33.4221, 32.3462,
31.3445

139.6567,
139.5477, 141.5206

22.6108, 21.6261,
20.6006

173.8966,
174.3989, 177.7770

14.4255, 13.5824,
12.6440

213.3201,
214.6174, 219.7504

8.5009, 7.8308,
7.0560

258.2925,
260.5874, 267.8593

4.4716, 3.9869,
3.4182

309.1791,

1.9722, 1.6662,

312.6935, 322.5223

1.3119

366.3452,
371.3200, 384.1579

■ 0.6183, 0.4016,
0.0715

■ 0.0000, 0.0000,
0.0000

■ 64.3843, 63.3535,
62.8679

■ 64.3843, 63.3535,
62.8679

■ 57.3209, 53.1977,
48.2702

■ 72.5245, 75.0101,
79.8346

■ 51.2842, 44.4735,
35.9323

■ 81.7786, 88.2162,
99.2649

■ 46.2277, 37.1192,
25.7424

■ 86.7652, 95.7290,
108.5123

■ 42.0996, 31.0651,
17.5774

■ 38.8429, 26.2353,
11.3021

■ 36.3947, 22.5461,
6.7644

■ 34.6833, 19.9032,
3.7888

■ 33.6239, 18.1973,
2.1629

■ 33.2362, 17.5509,
1.6359

Harmonies

Analogous

The Analogous color harmony consists of three colors that are next to each other on the color wheel.



64.9657, 63.3535, 69.3598



64.3843, 63.3535, 62.8679



62.6779, 63.3535, 58.2909

Triad

The Triadic color harmony groups three colors that are evenly spaced from another and form a triangle on the color wheel.



64.3843, 63.3535, 62.8679



56.3570, 63.3535, 62.2547



60.0838, 63.3535, 83.1103

Complementary

The Complementary color scheme is a pair of colors which are on the opposite of each other on the color wheel.



64.3843, 63.3535, 62.8679



65.7200, 73.3968, 86.3050

Split Complementary

Split-complementary colors differ from the complementary color scheme. The scheme consists of three colors, the original color and two neighbors of the complement color.



57.8186, 63.3535, 80.9045



64.3843, 63.3535, 62.8679



55.7029, 63.3535, 68.6040

Square

The Square scheme is like the rectangle color scheme, but the four colors are evenly spaced on the color wheel.



64.3843, 63.3535, 62.8679



58.0414, 63.3535, 57.9538



56.2308, 63.3535, 75.4785



62.4435, 63.3535, 81.3255

Rectangle

The Rectangle color scheme consists of four colors that form a rectangle on the color wheel.



64.3843, 63.3535, 62.8679



61.1544, 63.3535, 56.7859



56.2308, 63.3535, 75.4785



59.2864, 63.3535, 82.8083

Sweetspot

The Sweet Spot groups the original color and five complimentary colors.



64.3861, 63.3563, 62.8692



90.5730, 93.6045, 99.5200



67.4290, 63.4566, 82.3367



19.2115, 19.7853, 20.9358



0.0000, 0.0000, 0.0000



20.3446, 21.4041, 23.3091

Same Dimension

The Same Dimension uses a secret algorithm to generate beautiful new colors.



64.3861, 63.3563, 62.8692



77.5637, 74.9640, 72.4376



68.2495, 71.0833, 64.1571



14.4853, 14.5844, 14.9561



18.6718, 9.9177, 0.9302



1.4172, 0.8077, 0.0812

Inverse Universe

The Inverse Universe completely reimagines the original color for something new.



65.7200, 73.3968, 86.3050



79.5760, 90.1159, 107.8077



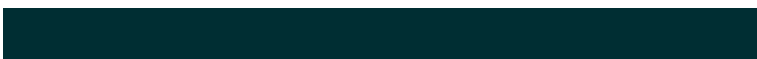
61.6047, 65.1663, 84.9333



14.6857, 16.0928, 18.4765



20.9612, 28.9845, 46.8730



1.5828, 2.2096, 3.4750

Previews

White Background



This preview shows how the XYZ color 64.3843, 63.3535, 62.8679 looks on a white background.

Color Contrast Check

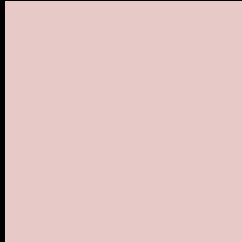
Large Text (above 18pt) WCAG AA × Fail

Any Text WCAG AA × Fail

Large Text (above 18pt) WCAG AAA × Fail

Any Text WCAG AAA × Fail

Black Background



This preview shows how the XYZ color 64.3843, 63.3535, 62.8679 looks on a black background.

Color Contrast Check

Large Text (above 18pt) WCAG AA ✓ Pass

Any Text WCAG AA ✓ Pass

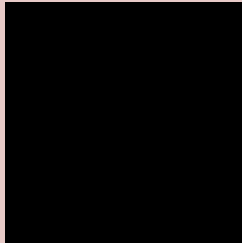
Large Text (above 18pt) WCAG AAA ✓ Pass

Any Text WCAG AAA ✓ Pass

If you want to check with other color combinations, try the [Color Contrast Checker](#).

XYZ 64.3843, 63.3535, 62.8679

Background



This preview shows how black text looks on a background with the XYZ color 64.3843, 63.3535, 62.8679.

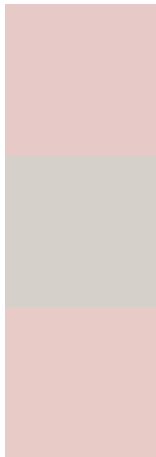


This preview shows how white text looks on a background with the XYZ color 64.3843, 63.3535,

Color Blindness Simulation

Color vision deficiency is a very complex topic, and I could not describe the different causes any better than Wikipedia does, so if you want to learn more, you should check out their [article about color blindness](#).

Dichromacy



Original Color

64.3843, 63.3535, 62.8679

Protanopia

60.9481, 63.6722, 64.9548

Deuteranopia

64.7080, 63.5204, 62.8830



Tritanopia

66.5243, 63.5385, 73.0479

Trichromacy



Original Color

64.3843, 63.3535, 62.8679

Protanomaly

62.1291, 63.5753, 64.2550

Deuteranomaly

64.7080, 63.5204, 62.8830

Tritanomaly

65.6740, 63.5325, 69.1232

Monochromacy



Original Color

64.3843, 63.3535, 62.8679

Achromatopsia

61.2578, 64.4480, 70.1838

Achromatomaly

62.3668, 63.9873, 67.4562

CSS Examples

Text

The CSS property to change the color of the text to XYZ 64.3843, 63.3535, 62.8679 is called "color". The color property can be set on classes, ids or directly on the HTML element.

This example shows how text in the color `rgb(231, 202, 199)` looks like.

```
.text, #text, p{  
    color:rgb(231, 202, 199)  
}
```

If you want to add a text shadow in that color use the text-shadow property, you can generate a text shadow directly with our [CSS Text Shadow Generator](#).

Here you see how black text with a 4 pixel rgb(231, 202, 199) colored shadow looks like.

```
.shadow{ text-shadow: 4px 4px 2px rgb(231, 202, 199) }
```

Border

The CSS property to change the border of an element to XYZ 64.3843, 63.3535, 62.8679 is called "border". The border property can be set on classes, ids or directly on the HTML element.

This example shows the color as border, it can be applied via the CSS property "border" or "border-color".

```
.border, #border, table{ border:4px solid rgb(231, 202, 199) }
```


If only the border color should be changed use the property border-color.

```
.border{ border-color:rgb(231, 202, 199) }
```

If you want to add a box shadow in that color use:

Here you see how a box with a 4 pixel rgb(231, 202, 199) colored shadow looks like.

```
.boxshadow{ -moz-box-shadow:4px 4px 4px  
4px rgb(231, 202, 199); -webkit-box-  
shadow:4px 4px 4px 4px rgb(231, 202, 199);  
box-shadow:4px 4px 4px 4px rgb(231, 202,  
199) }
```

Background

The CSS property to change the background color of an element to XYZ 64.3843, 63.3535, 62.8679 is called "background". The background property can be set on classes, ids or directly on the HTML element.

```
.background, #background, body{  
background: rgb(231, 202, 199) }
```

If only the background color should be changed can be used:

```
.background{ background-color: rgb(231,  
202, 199) }
```

This example shows the color as background, it is applied via the CSS property "background".

To optimize and compress your CSS code, you can use our [online CSS compressor and optimizer](#) based on csstidy. If you want to create a linear or radial gradient as background or border, check our [CSS Gradient Generator](#).

Hey! You found this booklet interesting? Support Converting Colors with the new Membership Option!

The pro membership hides all ads, plus gives you double the colors in the color bucket, and more awesome pro features!

[Learn more, Memberships starting at \\$2.50/m!](#)

**Follow me
on Twitter!**

@ConvertingColor