

Converting Colors

XYZ(64.6051, 62.1007, 50.6963)

Have a look what the booklet for
XYZ(64.6051, 62.1007, 50.6963)
contains.

XYZ(64.6201, 62.0241, 50.6855)	3
<i>Conversions</i>	4
<i>Details</i>	6
<i>Harmonies</i>	12
<i>Previews</i>	24
<i>Color Blindness Simulation</i>	28
<i>CSS Examples</i>	31

Color

**XYZ(64.6201, 62.0241,
50.6855)**

Conversions

Conversions Part 1

Format	Color
Hex	F2C5B2
RGB	242, 197, 178
RGB Percent	95%, 77%, 70%
CMY	0.0510, 0.2274, 0.3020
CMYK	0.00, 0.19, 0.26, 0.05
HSL	18°, 71%, 82%
HSV	18°, 26%, 95%
XYZ	64.6201, 62.0241, 50.6855
YIQ	208.2890, 32.9190, 3.6310

Conversions

Conversions Part 2

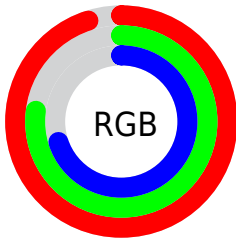
Format	Color
RYB	242, 205, 178
Decimal	15910322
CIELab	82.93, 13.25, 15.56
CIElCh	83, 20.437, 49.585
Yxy	62.0241, 0.3644, 0.3498
Android (android.graphics.Color)	4294100402 (0xFFFF2C5B2)
YUV	208.2890, -14.9325, 29.5645
Hunter-Lab	78.7554, 8.6403, 16.9708

Details

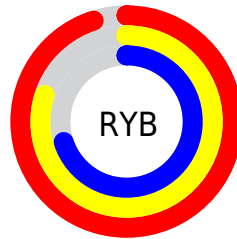
The XYZ color **64.6201, 62.0241, 50.6855** is a light color, and the websafe version is hex **FFCCCC**. A complement of this color would be **60.7741, 68.6492, 94.0522**, and the grayscale version is **60.2220, 63.3582, 68.9971**.

A 20% lighter version of the original color is **91.5331, 98.0841, 91.9497**, and **33.5317, 31.4399, 23.7032** is the 20% darker color. If you saturate the color by 10%, you get **58.7540, 53.8431, 37.7814**, and if you desaturate by 10%, it is **71.3542, 71.2543, 65.9950**.

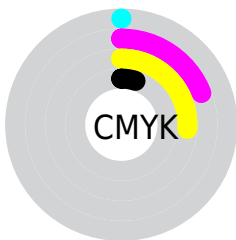
Distribution



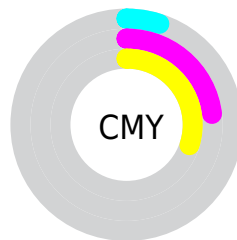
- Red (95%)
- Green (77%)
- Blue (70%)



- Red (95%)
- Yellow (80%)
- Blue (70%)



- Cyan (0%)
- Magenta (19%)
- Yellow (26%)
- Black (5%)





- Cyan (5%)
- Magenta (23%)
- Yellow (30%)

Brightness & Saturation Gradients


These gradients show how the XYZ color 64.6201, 62.0241, 50.6855 changes by changing the brightness by 10 percent. The first figure shows a shift by +10% for each color and the second figure -10%.


Similar to the brightness gradients but the following saturation gradients show a change of the XYZ color 64.6201, 62.0241, 50.6855 by changing the saturation by 10% instead.


 64.6201, 62.0241,
50.6855

 64.6201, 62.0241,
50.6855


430.9923,
432.0190, 406.1523

 47.4167, 45.0522,
35.5834


 110.5723,
107.7604, 92.5965

 33.5745, 31.4985,
23.8255


140.0517,
137.2935, 120.2424

 22.7282, 20.9788,
14.9932


174.3538,
171.7825, 152.9067

 14.5126, 13.1085,
8.6680

213.8440,
211.6117, 191.0078

 8.5621, 7.5033,
4.4315

258.8876,
257.1656, 234.9644

 4.5115, 3.7788,
1.8649

309.8499,

 1.9954, 1.5506,

308.8285, 285.1950

0.4703

367.0964,
366.9848, 342.1181

■ 0.6314, 0.3240,
0.0000

■ 0.0000, 0.0000,
0.0000

■ 64.6201, 62.0241,
50.6855

■ 64.6201, 62.0241,
50.6855

■ 58.7540, 53.8431,
37.7814

■ 71.3542, 71.2543,
65.9950

■ 53.7140, 46.6650,
27.1553

■ 78.9861, 81.5611,
83.8207

■ 49.4620, 40.4523,
18.6742

■ 87.5500, 92.9813,
104.2708

■ 45.9546, 35.1619,
12.1891

■ 90.4281, 97.6173,
108.6837

■ 43.1438, 30.7471,
7.5319

■ 40.9751, 27.1565,
4.5064

■ 39.3831, 24.3320,
2.8678

■ 38.9265, 23.4942,
2.4832

Harmonies

Analogous

The Analogous color harmony consists of three colors that are next to each other on the color wheel.



67.3042, 62.0241, 59.7187



64.6201, 62.0241, 50.6855



60.4977, 62.0241, 46.3607

Triad

The Triadic color harmony groups three colors that are evenly spaced from another and form a triangle on the color wheel.



64.6201, 62.0241, 50.6855



51.0020, 62.0241, 63.2395



61.8393, 62.0241, 93.0846

Complementary

The Complementary color scheme is a pair of colors which are on the opposite of each other on the color wheel.



64.6201, 62.0241, 50.6855



60.7741, 68.6492, 94.0522

Split Complementary

Split-complementary colors differ from the complementary color scheme. The scheme consists of three colors, the original color and two neighbors of the complement color.



57.4329, 62.0241, 94.3342



64.6201, 62.0241, 50.6855



51.3211, 62.0241, 76.0024

Square

The Square scheme is like the rectangle color scheme, but the four colors are evenly spaced on the color wheel.



64.6201, 62.0241, 50.6855



52.7309, 62.0241, 52.9859



53.6255, 62.0241, 87.7543



65.6442, 62.0241, 84.5268

Rectangle

The Rectangle color scheme consists of four colors that form a rectangle on the color wheel.



64.6201, 62.0241, 50.6855



57.5519, 62.0241, 46.3132



53.6255, 62.0241, 87.7543



60.3748, 62.0241, 94.4106

Sweetspot

The Sweet Spot groups the original color and five complimentary colors.



64.6217, 62.0270, 50.6868



87.5317, 89.9432, 91.0420



65.9754, 56.0934, 77.7766



18.4489, 18.8661, 18.8135



0.0000, 0.0000, 0.0000



20.3446, 21.4041, 23.3091

Same Dimension

The Same Dimension uses a secret algorithm to generate beautiful new colors.



64.6217, 62.0270, 50.6868



68.9315, 64.5123, 48.5574



72.4344, 77.6523, 53.2910



16.1553, 16.5238, 16.4877



21.0150, 12.8280, 1.3684



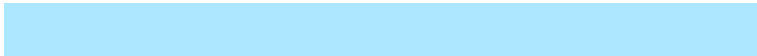
1.8317, 1.2340, 0.1417

Inverse Universe

The Inverse Universe completely reimagines the original color for something new.



60.7741, 68.6492, 94.0522



63.8835, 73.1725, 105.3644



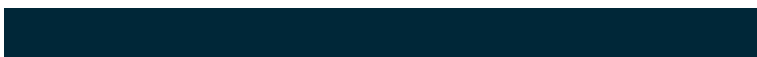
53.2082, 53.5173, 91.5302



15.8280, 17.0901, 20.1861



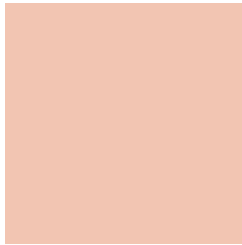
16.4707, 19.1656, 47.9591



1.4563, 1.7667, 4.0185

Previews

White Background



This preview shows how the XYZ color 64.6201, 62.0241, 50.6855 looks on a white background.

Color Contrast Check

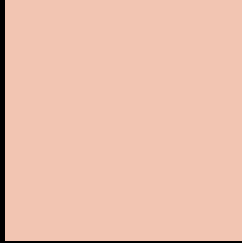
Large Text (above 18pt) WCAG AA × Fail

Any Text WCAG AA × Fail

Large Text (above 18pt) WCAG AAA × Fail

Any Text WCAG AAA × Fail

Black Background



This preview shows how the XYZ color 64.6201, 62.0241, 50.6855 looks on a black background.

Color Contrast Check

Large Text (above 18pt) WCAG AA ✓ Pass

Any Text WCAG AA ✓ Pass

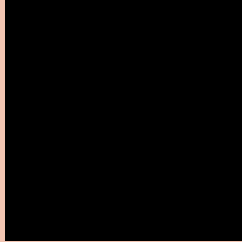
Large Text (above 18pt) WCAG AAA ✓ Pass

Any Text WCAG AAA ✓ Pass

If you want to check with other color combinations, try the [Color Contrast Checker](#).

XYZ 64.6201, 62.0241, 50.6855

Background



This preview shows how black text looks on a background with the XYZ color 64.6201, 62.0241, 50.6855.



This preview shows how white text looks on a background with the XYZ color 64.6201, 62.0241,

50.6855.

Color Blindness Simulation

Color vision deficiency is a very complex topic, and I could not describe the different causes any better than Wikipedia does, so if you want to learn more, you should check out their [article about color blindness](#).

Dichromacy



Original Color

64.6201, 62.0241, 50.6855

Protanopia

58.9375, 62.1604, 53.6916

Deuteranopia

63.3844, 62.0657, 50.7586



Tritanopia

68.1113, 62.1065, 68.0724

Trichromacy



Original Color

64.6201, 62.0241, 50.6855

Protanomaly

60.7478, 62.0556, 52.4922

Deuteranomaly

63.8266, 61.9532, 50.7136

Tritanomaly

66.6781, 61.8479, 61.2468

Monochromacy



Original Color

64.6201, 62.0241, 50.6855

Achromatopsia

59.9535, 63.0757, 68.6895

Achromatomaly

61.1861, 62.4326, 61.6492

CSS Examples

Text

The CSS property to change the color of the text to XYZ 64.6201, 62.0241, 50.6855 is called "color". The color property can be set on classes, ids or directly on the HTML element.

This example shows how text in the color `rgb(242, 197, 178)` looks like.

```
.text, #text, p{  
    color:rgb(242, 197, 178)  
}
```

If you want to add a text shadow in that color use the text-shadow property, you can generate a text shadow directly with our [CSS Text Shadow Generator](#).

Here you see how black text with a 4 pixel rgb(242, 197, 178) colored shadow looks like.

```
.shadow{ text-shadow: 4px 4px 2px rgb(242, 197, 178) }
```

Border

The CSS property to change the border of an element to XYZ 64.6201, 62.0241, 50.6855 is called "border". The border property can be set on classes, ids or directly on the HTML element.

This example shows the color as border, it can be applied via the CSS property "border" or "border-color".

```
.border, #border, table{ border:4px solid rgb(242, 197, 178) }
```


If only the border color should be changed use the property `border-color`.

```
.border{ border-color:rgb(242, 197, 178) }
```

If you want to add a box shadow in that color use:

Here you see how a box with a 4 pixel `rgb(242, 197, 178)` colored shadow looks like.

```
.boxshadow{ -moz-box-shadow:4px 4px 4px 4px rgb(242, 197, 178); -webkit-box-shadow:4px 4px 4px 4px rgb(242, 197, 178); box-shadow:4px 4px 4px 4px rgb(242, 197, 178) }
```

Background

The CSS property to change the background color of an element to XYZ 64.6201, 62.0241, 50.6855 is called "background". The background property can be set on classes, ids or directly on the HTML element.

```
.background, #background, body{  
background: rgb(242, 197, 178) }
```

If only the background color should be changed can be used:

```
.background{ background-color: rgb(242,  
197, 178) }
```

This example shows the color as background, it is applied via the CSS property "background".

To optimize and compress your CSS code, you can use our [online CSS compressor and optimizer](#) based on csstidy. If you want to create a linear or radial gradient as background or border, check our [CSS Gradient Generator](#).

Hey! You found this booklet interesting? Support Converting Colors with the new Membership Option!

The pro membership hides all ads, plus gives you double the colors in the color bucket, and more awesome pro features!

[Learn more, Memberships starting at \\$2.50/m!](#)

**Follow me
on Twitter!**

@ConvertingColor