

Converting Colors

XYZ(64.6107, 63.9022, 55.2035)

Have a look what the booklet for
XYZ(64.6107, 63.9022, 55.2035)
contains.

XYZ(64.8109, 64.0899, 55.4091)	3
<i>Conversions</i>	4
<i>Details</i>	6
<i>Harmonies</i>	12
<i>Previews</i>	24
<i>Color Blindness Simulation</i>	28
<i>CSS Examples</i>	31

Color

**XYZ(64.8109, 64.0899,
55.4091)**

Conversions

Conversions Part 1

Format	Color
Hex	ECCBBA
RGB	236, 203, 186
RGB Percent	93%, 80%, 73%
CMY	0.0745, 0.2039, 0.2706
CMYK	0.00, 0.14, 0.21, 0.07
HSL	20°, 57%, 83%
HSV	20°, 21%, 93%
XYZ	64.8109, 64.0899, 55.4091
YIQ	210.9290, 25.1250, 1.7090

Conversions

Conversions Part 2

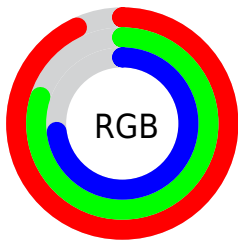
Format	Color
R _Y B	236, 212, 186
Decimal	15518650
CIE Lab	84.01, 9.00, 12.76
CIE LCh	84, 15.615, 54.805
Yxy	64.0899, 0.3516, 0.3477
Android (android.graphics.Color)	4293708730 (0xFFECCBBA)
YUV	210.9290, -12.2900, 21.9873
Hunter-Lab	80.0562, 4.4096, 15.0031

Details

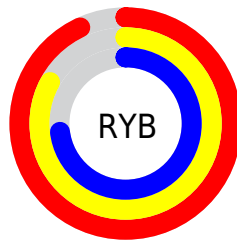
The XYZ color **64.8109, 64.0899, 55.4091** is a light color, and the websafe version is hex **FFCCCC**. A complement of this color would be **60.7210, 67.1565, 89.1194**, and the grayscale version is **61.9384, 65.1640, 70.9636**.

A 20% lighter version of the original color is **93.0270, 99.1908, 98.2471**, and **33.8035, 32.8916, 26.7574** is the 20% darker color. If you saturate the color by 10%, you get **59.0117, 56.1801, 42.1035**, and if you desaturate by 10%, it is **71.3975, 72.9102, 71.0229**.

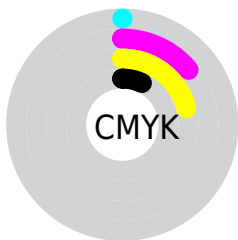
Distribution



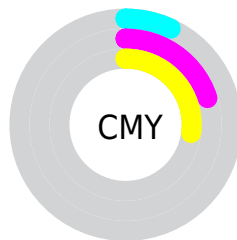
- Red (93%)
- Green (80%)
- Blue (73%)



- Red (93%)
- Yellow (83%)
- Blue (73%)



- Cyan (0%)
- Magenta (14%)
- Yellow (21%)
- Black (7%)





- Cyan (7%)
- Magenta (20%)
- Yellow (27%)

Brightness & Saturation Gradients


These gradients show how the XYZ color 64.8109, 64.0899, 55.4091 changes by changing the brightness by 10 percent. The first figure shows a shift by +10% for each color and the second figure -10%.


Similar to the brightness gradients but the following saturation gradients show a change of the XYZ color 64.8109, 64.0899, 55.4091 by changing the saturation by 10% instead.


 64.8109, 64.0899,
55.4091

 64.8109, 64.0899,
55.4091


431.6681,
439.5142, 424.7864

 47.5719, 46.7235,
39.3285


 110.8452,
110.7404, 99.6172

 33.6978, 32.8171,
26.7056


140.3711,
140.7933, 128.5819

 22.8233, 21.9864,
17.1218


174.7235,
175.8438, 162.6784

 14.5831, 13.8469,
10.1585

214.2675,
216.2763, 202.3252

 8.6117, 8.0143,
5.3972

259.3687,
262.4752, 247.9408

 4.5439, 4.1041,
2.4194

310.3922,

 2.0142, 1.7319,

314.8249, 299.9439

0.7970

367.7036,
373.7097, 358.7529

■ 0.6419, 0.4442,
0.0000

■ 0.0000, 0.0000,
0.0000

■ 64.8109, 64.0899,
55.4091

■ 64.8109, 64.0899,
55.4091

■ 59.0117, 56.1801,
42.1035

■ 71.3975, 72.9102,
71.0229

■ 53.9635, 49.1423,
30.9914

■ 78.7956, 82.6608,
89.0441

■ 49.6346, 42.9478,
21.9543

■ 86.7432, 93.2548,
108.0359

■ 45.9888, 37.5632,
14.8607

■ 88.4022, 96.5729,
108.5889

■ 42.9866, 32.9522,
9.5638

■ 40.5833, 29.0756,
5.8958

■ 38.7274, 25.8898,
3.6559

■ 37.4801, 23.6087,
2.5815

Harmonies

Analogous

The Analogous color harmony consists of three colors that are next to each other on the color wheel.



67.1240, 64.0899, 62.1280



64.8109, 64.0899, 55.4091



61.5168, 64.0899, 52.5548

Triad

The Triadic color harmony groups three colors that are evenly spaced from another and form a triangle on the color wheel.



64.8109, 64.0899, 55.4091



54.5582, 64.0899, 68.0806



63.7350, 64.0899, 88.4448

Complementary

The Complementary color scheme is a pair of colors which are on the opposite of each other on the color wheel.



64.8109, 64.0899, 55.4091



60.7210, 67.1565, 89.1194

Split Complementary

Split-complementary colors differ from the complementary color scheme. The scheme consists of three colors, the original color and two neighbors of the complement color.



60.3181, 64.0899, 90.4165



64.8109, 64.0899, 55.4091



55.1022, 64.0899, 78.0423

Square

The Square scheme is like the rectangle color scheme, but the four colors are evenly spaced on the color wheel.



64.8109, 64.0899, 55.4091



55.6647, 64.0899, 59.4170



57.1795, 64.0899, 86.4498



66.4866, 64.0899, 81.2896

Rectangle

The Rectangle color scheme consists of four colors that form a rectangle on the color wheel.



64.8109, 64.0899, 55.4091



59.2397, 64.0899, 53.0126



57.1795, 64.0899, 86.4498



62.6227, 64.0899, 89.7626

Sweetspot

The Sweet Spot groups the original color and five complimentary colors.



64.8126, 64.0928, 55.4104



89.5468, 92.7798, 95.3933



64.9817, 58.0835, 75.0350



19.0431, 19.6958, 20.1172



0.0000, 0.0000, 0.0000



20.3446, 21.4041, 23.3091

Same Dimension

The Same Dimension uses a secret algorithm to generate beautiful new colors.



64.8126, 64.0928, 55.4104



74.4484, 72.5863, 59.5213



71.1073, 76.6821, 57.5087



15.4842, 15.8914, 15.7700



20.7673, 13.2289, 1.4589



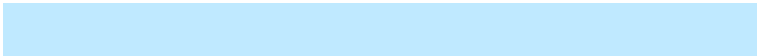
1.7170, 1.2114, 0.1433

Inverse Universe

The Inverse Universe completely reimagines the original color for something new.



60.7210, 67.1565, 89.1194



68.8281, 76.7875, 105.8016



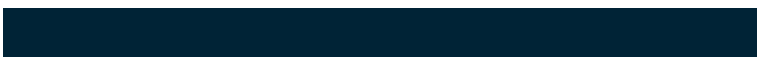
54.7569, 55.2282, 87.1313



15.0613, 16.2090, 19.2571



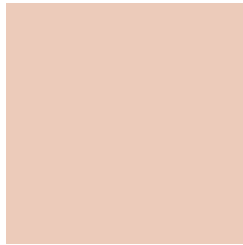
14.9993, 16.6456, 46.1653



1.2664, 1.4842, 3.6546

Previews

White Background



This preview shows how the XYZ color 64.8109, 64.0899, 55.4091 looks on a white background.

Color Contrast Check

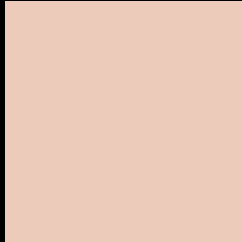
Large Text (above 18pt) WCAG AA × Fail

Any Text WCAG AA × Fail

Large Text (above 18pt) WCAG AAA × Fail

Any Text WCAG AAA × Fail

Black Background



This preview shows how the XYZ color 64.8109, 64.0899, 55.4091 looks on a black background.

Color Contrast Check

Large Text (above 18pt) WCAG AA ✓ Pass

Any Text WCAG AA ✓ Pass

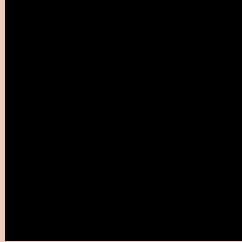
Large Text (above 18pt) WCAG AAA ✓ Pass

Any Text WCAG AAA ✓ Pass

If you want to check with other color combinations, try the [Color Contrast Checker](#).

XYZ 64.8109, 64.0899, 55.4091

Background



This preview shows how black text looks on a background with the XYZ color 64.8109, 64.0899, 55.4091.



This preview shows how white text looks on a background with the XYZ color 64.8109, 64.0899,

55.4091.

Color Blindness Simulation

Color vision deficiency is a very complex topic, and I could not describe the different causes any better than Wikipedia does, so if you want to learn more, you should check out their [article about color blindness](#).

Dichromacy



Original Color

64.8109, 64.0899, 55.4091

Protanopia

60.8992, 64.1805, 57.3225

Deuteranopia

65.2434, 63.9634, 55.3618



Tritanopia

68.1576, 64.0526, 72.3894

Trichromacy



Original Color

64.8109, 64.0899, 55.4091

Protanomaly

62.4413, 64.2640, 56.6901

Deuteranomaly

64.9085, 63.7908, 55.3462

Tritanomaly

66.8133, 63.8453, 65.9287

Monochromacy



Original Color

64.8109, 64.0899, 55.4091

Achromatopsia

61.9161, 65.1406, 70.9381

Achromatomaly

62.7317, 64.5917, 65.0382

CSS Examples

Text

The CSS property to change the color of the text to XYZ 64.8109, 64.0899, 55.4091 is called "color". The color property can be set on classes, ids or directly on the HTML element.

This example shows how text in the color `rgb(236, 203, 186)` looks like.

```
.text, #text, p{  
    color:rgb(236, 203, 186)  
}
```

If you want to add a text shadow in that color use the text-shadow property, you can generate a text shadow directly with our [CSS Text Shadow Generator](#).

Here you see how black text with a 4 pixel rgb(236, 203, 186) colored shadow looks like.

```
.shadow{ text-shadow: 4px 4px 2px rgb(236, 203, 186) }
```

Border

The CSS property to change the border of an element to XYZ 64.8109, 64.0899, 55.4091 is called "border". The border property can be set on classes, ids or directly on the HTML element.

This example shows the color as border, it can be applied via the CSS property "border" or "border-color".

```
.border, #border, table{ border:4px solid rgb(236, 203, 186) }
```


If only the border color should be changed use the property `border-color`.

```
.border{ border-color:rgb(236, 203, 186) }
```

If you want to add a box shadow in that color use:

Here you see how a box with a 4 pixel `rgb(236, 203, 186)` colored shadow looks like.

```
.boxshadow{ -moz-box-shadow:4px 4px 4px  
4px rgb(236, 203, 186); -webkit-box-  
shadow:4px 4px 4px 4px rgb(236, 203, 186);  
box-shadow:4px 4px 4px 4px rgb(236, 203,  
186) }
```

Background

The CSS property to change the background color of an element to XYZ 64.8109, 64.0899, 55.4091 is called "background". The background property can be set on classes, ids or directly on the HTML element.

```
.background, #background, body{  
background: rgb(236, 203, 186) }
```

If only the background color should be changed can be used:

```
.background{ background-color: rgb(236,  
203, 186) }
```

This example shows the color as background, it is applied via the CSS property "background".

To optimize and compress your CSS code, you can use our [online CSS compressor and optimizer](#) based on csstidy. If you want to create a linear or radial gradient as background or border, check our [CSS Gradient Generator](#).

Hey! You found this booklet interesting? Support Converting Colors with the new Membership Option!

The pro membership hides all ads, plus gives you double the colors in the color bucket, and more awesome pro features!

[Learn more, Memberships starting at \\$2.50/m!](#)

**Follow me
on Twitter!**

@ConvertingColor