

Converting Colors

XYZ(64.6160, 64.4150, 56.4914)

Have a look what the booklet for
XYZ(64.6160, 64.4150, 56.4914)
contains.

XYZ(64.6017, 64.3090, 56.5850)	3
<i>Conversions</i>	4
<i>Details</i>	6
<i>Harmonies</i>	12
<i>Previews</i>	24
<i>Color Blindness Simulation</i>	28
<i>CSS Examples</i>	31

Color

**XYZ(64.6017, 64.3090,
56.5850)**

Conversions

Conversions Part 1

Format	Color
Hex	EACCBC
RGB	234, 204, 188
RGB Percent	92%, 80%, 74%
CMY	0.0823, 0.2000, 0.2627
CMYK	0.00, 0.13, 0.20, 0.08
HSL	21°, 52%, 83%
HSV	21°, 20%, 92%
XYZ	64.6017, 64.3090, 56.5850
YIQ	211.1460, 23.0160, 1.3840

Conversions

Conversions Part 2

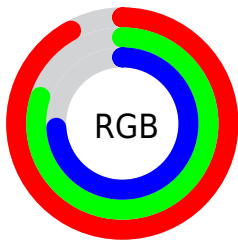
Format	Color
RYB	234, 213, 188
Decimal	15387836
CIELab	84.13, 8.04, 11.84
CIELCh	84, 14.305, 55.827
Yxy	64.3090, 0.3483, 0.3467
Android (android.graphics.Color)	4293577916 (0xFFEACCBC)
YUV	211.1460, -11.4110, 20.0430
Hunter-Lab	80.1929, 3.4583, 14.2993

Details

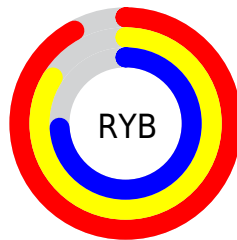
The XYZ color **64.6017, 64.3090, 56.5850** is a light color, and the websafe version is hex **FFCCCC**. A complement of this color would be **60.6614, 66.7732, 87.5338**, and the grayscale version is **62.0772, 65.3101, 71.1226**.

A 20% lighter version of the original color is **93.3291, 99.3117, 99.8380**, and **33.6396, 33.0269, 27.5235** is the 20% darker color. If you saturate the color by 10%, you get **58.8305, 56.4811, 43.2087**, and if you desaturate by 10%, it is **71.1408, 73.0170, 72.2366**.

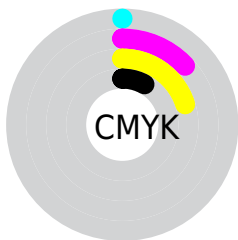
Distribution



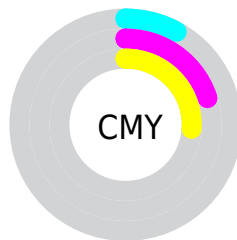
- Red (92%)
- Green (80%)
- Blue (74%)



- Red (92%)
- Yellow (84%)
- Blue (74%)



- Cyan (0%)
- Magenta (13%)
- Yellow (20%)
- Black (8%)




- Cyan (8%)
- Magenta (20%)
- Yellow (26%)

Brightness & Saturation Gradients

These gradients show how the XYZ color 64.6017, 64.3090, 56.5850 changes by changing the brightness by 10 percent. The first figure shows a shift by +10% for each color and the second figure -10%.


Similar to the brightness gradients but the following saturation gradients show a change of the XYZ color 64.6017, 64.3090, 56.5850 by changing the saturation by 10% instead.


 64.6017, 64.3090,
56.5850

 64.6017, 64.3090,
56.5850


430.9271,
440.3046, 429.3425

 47.4017, 46.9010,
40.2650

 110.5459,
111.0558, 101.3537

 33.5626, 32.9574,
27.4299


140.0209,
141.1634, 130.6395

 22.7191, 22.0938,
17.6610


174.3181,
176.2730, 165.0843

 14.5058, 13.9258,
10.5400

213.8031,
216.7690, 205.1067

 8.5573, 8.0691,
5.6482

258.8411,
263.0358, 251.1251

 4.5084, 4.1392,
2.5670

309.7976,

 1.9936, 1.7517,

315.4577, 303.5582

0.8754

367.0378,
374.4192, 362.8245

■ 0.6303, 0.4568,
0.0000

■ 0.0000, 0.0000,
0.0000

■ 64.6017, 64.3090,
56.5850

■ 64.6017, 64.3090,
56.5850

■ 58.8305, 56.4811,
43.2087

■ 71.1408, 73.0170,
72.2366

■ 53.7920, 49.4964,
31.9966

■ 78.4707, 82.6232,
90.2592

■ 49.4562, 43.3280,
22.8342

■ 86.0998, 92.9482,
108.0106

■ 45.7885, 37.9441,
15.5950

■ 87.7419, 96.2326,
108.5580

■ 42.7510, 33.3109,
10.1379

■ 40.3016, 29.3913,
6.3023

■ 38.3916, 26.1448,
3.8981

■ 36.9488, 23.5193,
2.6153

■ 36.9052, 23.4391,
2.5791

Harmonies

Analogous

The Analogous color harmony consists of three colors that are next to each other on the color wheel.



66.7595, 64.3090, 62.7088



64.6017, 64.3090, 56.5850



61.5672, 64.3090, 54.0562

Triad

The Triadic color harmony groups three colors that are evenly spaced from another and form a triangle on the color wheel.



64.6017, 64.3090, 56.5850



55.2601, 64.3090, 68.7624



63.8100, 64.3090, 86.8874

Complementary

The Complementary color scheme is a pair of colors which are on the opposite of each other on the color wheel.



64.6017, 64.3090, 56.5850



60.6614, 66.7732, 87.5338

Split Complementary

Split-complementary colors differ from the complementary color scheme. The scheme consists of three colors, the original color and two neighbors of the complement color.



60.6825, 64.3090, 88.8564



64.6017, 64.3090, 56.5850



55.8145, 64.3090, 77.8818

Square

The Square scheme is like the rectangle color scheme, but the four colors are evenly spaced on the color wheel.



64.6017, 64.3090, 56.5850



56.2319, 64.3090, 60.6922



57.7730, 64.3090, 85.4327



66.2915, 64.3090, 80.2611

Rectangle

The Rectangle color scheme consists of four colors that form a rectangle on the color wheel.



64.6017, 64.3090, 56.5850



59.4811, 64.3090, 54.5743



57.7730, 64.3090, 85.4327



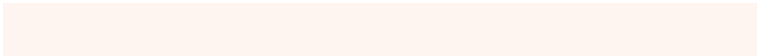
62.7964, 64.3090, 88.1390

Sweetspot

The Sweet Spot groups the original color and five complimentary colors.



64.6034, 64.3119, 56.5863



89.5831, 92.8523, 95.4054



64.6580, 58.5567, 74.6834



19.0517, 19.7129, 20.1201



0.0000, 0.0000, 0.0000



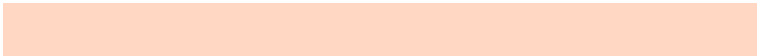
20.3446, 21.4041, 23.3091

Same Dimension

The Same Dimension uses a secret algorithm to generate beautiful new colors.



64.6034, 64.3119, 56.5863



75.2792, 73.7942, 61.1973



70.2966, 75.6981, 58.4841



15.4941, 15.9111, 15.7733



20.8448, 13.3838, 1.4847



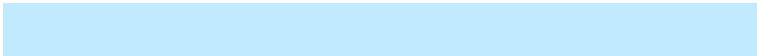
1.7240, 1.2252, 0.1456

Inverse Universe

The Inverse Universe completely reimagines the original color for something new.



60.6614, 66.7732, 87.5338



69.5864, 77.3420, 105.8686



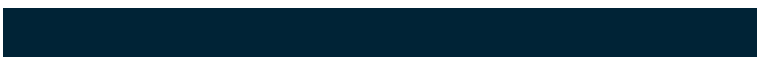
55.2560, 55.9624, 85.7320



15.0510, 16.1885, 19.2537



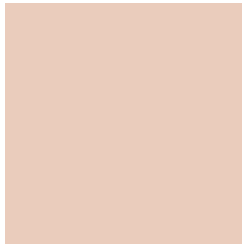
14.8310, 16.3090, 46.1092



1.2540, 1.4594, 3.6505

Previews

White Background



This preview shows how the XYZ color 64.6017, 64.3090, 56.5850 looks on a white background.

Color Contrast Check

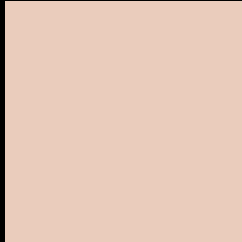
Large Text (above 18pt) WCAG AA × Fail

Any Text WCAG AA × Fail

Large Text (above 18pt) WCAG AAA × Fail

Any Text WCAG AAA × Fail

Black Background



This preview shows how the XYZ color 64.6017, 64.3090, 56.5850 looks on a black background.

Color Contrast Check

Large Text (above 18pt) WCAG AA ✓ Pass

Any Text WCAG AA ✓ Pass

Large Text (above 18pt) WCAG AAA ✓ Pass

Any Text WCAG AAA ✓ Pass

If you want to check with other color combinations, try the [Color Contrast Checker](#).

XYZ 64.6017, 64.3090, 56.5850

Background



This preview shows how black text looks on a background with the XYZ color 64.6017, 64.3090, 56.5850.



This preview shows how white text looks on a background with the XYZ color 64.6017, 64.3090,

Color Blindness Simulation

Color vision deficiency is a very complex topic, and I could not describe the different causes any better than Wikipedia does, so if you want to learn more, you should check out their [article about color blindness](#).

Dichromacy



Original Color

64.6017, 64.3090, 56.5850

Protanopia

61.1179, 64.2679, 58.4739

Deuteranopia

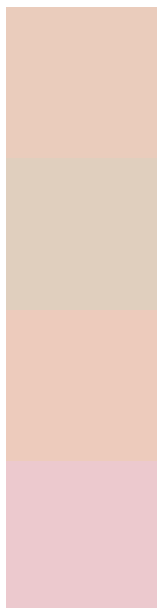
65.4575, 64.0490, 56.4897



Tritanopia

67.9740, 64.2709, 73.7887

Trichromacy



Original Color

64.6017, 64.3090, 56.5850

Protanomaly

62.3476, 64.1906, 57.8192

Deuteranomaly

65.3581, 64.3472, 56.5525

Tritanomaly

66.6193, 64.0624, 67.2466

Monochromacy



Original Color

64.6017, 64.3090, 56.5850

Achromatopsia

61.9161, 65.1406, 70.9381

Achromatomaly

62.5488, 64.4836, 65.6498

CSS Examples

Text

The CSS property to change the color of the text to XYZ 64.6017, 64.3090, 56.5850 is called "color". The color property can be set on classes, ids or directly on the HTML element.

This example shows how text in the color `rgb(234, 204, 188)` looks like.

```
.text, #text, p{  
    color:rgb(234, 204, 188)  
}
```

If you want to add a text shadow in that color use the text-shadow property, you can generate a text shadow directly with our [CSS Text Shadow Generator](#).

Here you see how black text with a 4 pixel rgb(234, 204, 188) colored shadow looks like.

```
.shadow{ text-shadow: 4px 4px 2px rgb(234, 204, 188) }
```

Border

The CSS property to change the border of an element to XYZ 64.6017, 64.3090, 56.5850 is called "border". The border property can be set on classes, ids or directly on the HTML element.

This example shows the color as border, it can be applied via the CSS property "border" or "border-color".

```
.border, #border, table{ border:4px solid rgb(234, 204, 188) }
```


If only the border color should be changed use the property `border-color`.

```
.border{ border-color:rgb(234, 204, 188) }
```

If you want to add a box shadow in that color use:

Here you see how a box with a 4 pixel `rgb(234, 204, 188)` colored shadow looks like.

```
.boxshadow{ -moz-box-shadow:4px 4px 4px  
4px rgb(234, 204, 188); -webkit-box-  
shadow:4px 4px 4px 4px rgb(234, 204, 188);  
box-shadow:4px 4px 4px 4px rgb(234, 204,  
188) }
```

Background

The CSS property to change the background color of an element to XYZ 64.6017, 64.3090, 56.5850 is called "background". The background property can be set on classes, ids or directly on the HTML element.

```
.background, #background, body{  
background: rgb(234, 204, 188) }
```

If only the background color should be changed can be used:

```
.background{ background-color: rgb(234,  
204, 188) }
```

This example shows the color as background, it is applied via the CSS property "background".

To optimize and compress your CSS code, you can use our [online CSS compressor and optimizer](#) based on csstidy. If you want to create a linear or radial gradient as background or border, check our [CSS Gradient Generator](#).

Hey! You found this booklet interesting? Support Converting Colors with the new Membership Option!

The pro membership hides all ads, plus gives you double the colors in the color bucket, and more awesome pro features!

[Learn more, Memberships starting at \\$2.50/m!](#)

**Follow me
on Twitter!**

@ConvertingColor