

Converting Colors

XYZ(64.6515, 64.5631, 62.6425)

Have a look what the booklet for
XYZ(64.6515, 64.5631, 62.6425)
contains.

XYZ(64.6575, 64.5629, 62.4801)	3
<i>Conversions</i>	4
<i>Details</i>	6
<i>Harmonies</i>	12
<i>Previews</i>	24
<i>Color Blindness Simulation</i>	28
<i>CSS Examples</i>	31

Color

**XYZ(64.6575, 64.5629,
62.4801)**

Conversions

Conversions Part 1

Format	Color
Hex	E6CDC6
RGB	230, 205, 198
RGB Percent	90%, 80%, 78%
CMY	0.0980, 0.1961, 0.2235
CMYK	0.00, 0.11, 0.14, 0.10
HSL	13°, 39%, 84%
HSV	13°, 14%, 90%
XYZ	64.6575, 64.5629, 62.4801
YIQ	211.6770, 17.1470, 3.1230

Conversions

Conversions Part 2

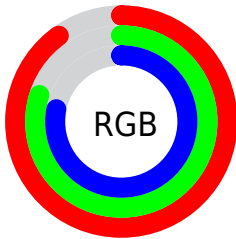
Format	Color
R _Y B	230, 207, 198
Decimal	15125958
CIE Lab	84.26, 7.59, 6.66
CIE LCh	84, 10.102, 41.255
Yxy	64.5629, 0.3373, 0.3368
Android (android.graphics.Color)	4293316038 (0xFFE6CDC6)
YUV	211.6770, -6.7428, 16.0693
Hunter-Lab	80.3510, 3.0224, 10.1425

Details

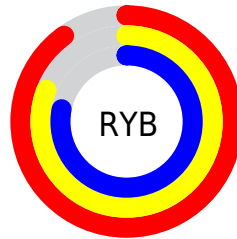
The XYZ color **64.6575, 64.5629, 62.4801** is a light color, and the websafe version is hex **CCCCCC**. A complement of this color would be **63.9589, 70.4927, 85.0990**, and the grayscale version is **62.4018, 65.6515, 71.4945**.

A 20% lighter version of the original color is **95.0500, 100.0000, 108.9000**, and **33.5562, 33.1455, 31.0147** is the 20% darker color. If you saturate the color by 10%, you get **58.1502, 55.4760, 48.2012**, and if you desaturate by 10%, it is **72.0648, 74.8037, 79.0480**.

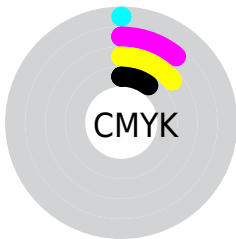
Distribution



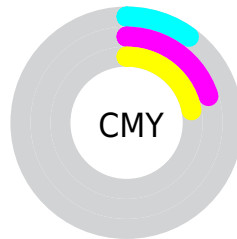
- Red (90%)
- Green (80%)
- Blue (78%)



- Red (90%)
- Yellow (81%)
- Blue (78%)



- Cyan (0%)
- Magenta (11%)
- Yellow (14%)
- Black (10%)



- Cyan (10%)
- Magenta (20%)
- Yellow (22%)

Brightness & Saturation Gradients

These gradients show how the XYZ color 64.6575, 64.5629, 62.4801 changes by changing the brightness by 10 percent. The first figure shows a shift by +10% for each color and the second figure -10%.

Similar to the brightness gradients but the following saturation gradients show a change of the XYZ color 64.6575, 64.5629, 62.4801 by changing the saturation by 10% instead.

64.6575, 64.5629,
62.4801

64.6575, 64.5629,
62.4801

431.1248,
441.2196, 451.7361

47.4471, 47.1067,
44.9824

110.6258,
111.4212, 109.9974

33.5987, 33.1200,
31.1008

140.1143,
141.5921, 140.8542

22.7469, 22.2184,
20.4165

174.4263,
176.7701, 177.0011

14.5264, 14.0175,
12.5111

213.9270,
217.3396, 218.8566

8.5718, 8.1328,
6.9660

258.9819,
263.6848, 266.8393

4.5178, 4.1801,
3.3627

309.9562,

1.9991, 1.7748,

316.1903, 321.3678

1.2827

367.2154,
375.2404, 382.8605

■ 0.6334, 0.4714,
0.0475

■ 0.0000, 0.0000,
0.0000

■ 64.6575, 64.5629,
62.4801

■ 64.6575, 64.5629,
62.4801

■ 58.1502, 55.4760,
48.2012

■ 72.0648, 74.8037,
79.0480

■ 52.5028, 47.4938,
36.1063

■ 80.3994, 86.2282,
97.9954

■ 47.6800, 40.5764,
26.0883

■ 86.4434, 95.5631,
108.4972

■ 43.6421, 34.6780,
18.0293

■ 40.3457, 29.7497,
11.7996

■ 37.7433, 25.7380,
7.2537

■ 35.7811, 22.5842,
4.2237

■ 34.3964, 20.2223,
2.5059

■ 33.7888, 19.1339,
1.9123

Harmonies

Analogous

The Analogous color harmony consists of three colors that are next to each other on the color wheel.



65.6833, 64.5629, 67.9198



64.6575, 64.5629, 62.4801



62.7584, 64.5629, 59.2610

Triad

The Triadic color harmony groups three colors that are evenly spaced from another and form a triangle on the color wheel.



64.6575, 64.5629, 62.4801



57.3795, 64.5629, 66.4114



62.2089, 64.5629, 83.0917

Complementary

The Complementary color scheme is a pair of colors which are on the opposite of each other on the color wheel.



64.6575, 64.5629, 62.4801



63.9589, 70.4927, 85.0990

Split Complementary

Split-complementary colors differ from the complementary color scheme. The scheme consists of three colors, the original color and two neighbors of the complement color.



59.9926, 64.5629, 82.6268



64.6575, 64.5629, 62.4801



57.2405, 64.5629, 72.7311

Square

The Square scheme is like the rectangle color scheme, but the four colors are evenly spaced on the color wheel.



64.6575, 64.5629, 62.4801



58.5709, 64.5629, 61.4337



58.1864, 64.5629, 78.7423



64.2468, 64.5629, 79.9765

Rectangle

The Rectangle color scheme consists of four colors that form a rectangle on the color wheel.



64.6575, 64.5629, 62.4801



61.2709, 64.5629, 58.6822



58.1864, 64.5629, 78.7423



61.4594, 64.5629, 83.3537

Sweetspot

The Sweet Spot groups the original color and five complimentary colors.



64.6593, 64.5658, 62.4815



90.9617, 94.3819, 99.6495



66.1562, 62.5433, 78.4451



19.3095, 19.9813, 20.9684



0.0000, 0.0000, 0.0000



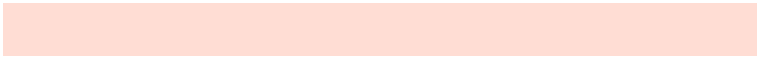
20.3446, 21.4041, 23.3091

Same Dimension

The Same Dimension uses a secret algorithm to generate beautiful new colors.



64.6593, 64.5658, 62.4815



78.9727, 77.7820, 72.9072



68.6657, 72.5786, 63.8169



14.6315, 14.8769, 15.0048



19.2029, 10.9800, 1.1072



1.4868, 0.9469, 0.1044

Inverse Universe

The Inverse Universe completely reimagines the original color for something new.



63.9589, 70.4927, 85.0990



77.9079, 86.7797, 107.2517



59.9014, 62.3777, 83.7465



14.5258, 15.7729, 18.4232



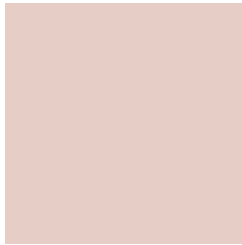
17.3810, 21.8241, 45.6796



1.3508, 1.7456, 3.3977

Previews

White Background



This preview shows how the XYZ color 64.6575, 64.5629, 62.4801 looks on a white background.

Color Contrast Check

Large Text (above 18pt) WCAG AA × Fail

Any Text WCAG AA × Fail

Large Text (above 18pt) WCAG AAA × Fail

Any Text WCAG AAA × Fail

Black Background



This preview shows how the XYZ color 64.6575, 64.5629, 62.4801 looks on a black background.

Color Contrast Check

Large Text (above 18pt) WCAG AA ✓ Pass

Any Text WCAG AA ✓ Pass

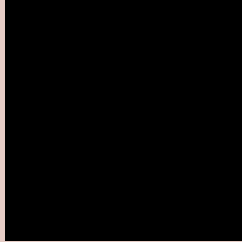
Large Text (above 18pt) WCAG AAA ✓ Pass

Any Text WCAG AAA ✓ Pass

If you want to check with other color combinations, try the [Color Contrast Checker](#).

XYZ 64.6575, 64.5629, 62.4801

Background



This preview shows how black text looks on a background with the XYZ color 64.6575, 64.5629, 62.4801.



This preview shows how white text looks on a background with the XYZ color 64.6575, 64.5629,

Color Blindness Simulation

Color vision deficiency is a very complex topic, and I could not describe the different causes any better than Wikipedia does, so if you want to learn more, you should check out their [article about color blindness](#).

Dichromacy



Original Color

64.6575, 64.5629, 62.4801

Protanopia

61.5447, 64.3700, 63.8245

Deuteranopia

65.8099, 64.4513, 62.3979



Tritanopia

67.3797, 64.6267, 75.2526

Trichromacy



Original Color

64.6575, 64.5629, 62.4801

Protanomaly

62.6835, 64.6074, 63.1995

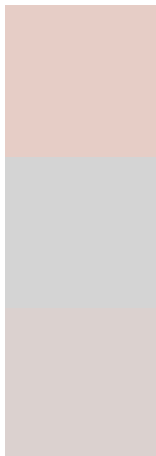
Deuteranomaly

65.3902, 64.5866, 62.4461

Tritanomaly

66.3925, 64.5708, 70.5922

Monochromacy



Original Color

64.6575, 64.5629, 62.4801

Achromatopsia

62.5785, 65.8375, 71.6970

Achromatomaly

63.2764, 65.1660, 68.2748

CSS Examples

Text

The CSS property to change the color of the text to XYZ 64.6575, 64.5629, 62.4801 is called "color". The color property can be set on classes, ids or directly on the HTML element.

This example shows how text in the color `rgb(230, 205, 198)` looks like.

```
.text, #text, p{  
    color:rgb(230, 205, 198)  
}
```

If you want to add a text shadow in that color use the text-shadow property, you can generate a text shadow directly with our [CSS Text Shadow Generator](#).

Here you see how black text with a 4 pixel rgb(230, 205, 198) colored shadow looks like.

```
.shadow{ text-shadow: 4px 4px 2px rgb(230, 205, 198) }
```

Border

The CSS property to change the border of an element to XYZ 64.6575, 64.5629, 62.4801 is called "border". The border property can be set on classes, ids or directly on the HTML element.

This example shows the color as border, it can be applied via the CSS property "border" or "border-color".

```
.border, #border, table{ border:4px solid rgb(230, 205, 198) }
```


If only the border color should be changed use the property border-color.

```
.border{ border-color:rgb(230, 205, 198) }
```

If you want to add a box shadow in that color use:

Here you see how a box with a 4 pixel rgb(230, 205, 198) colored shadow looks like.

```
.boxshadow{ -moz-box-shadow:4px 4px 4px  
4px rgb(230, 205, 198); -webkit-box-  
shadow:4px 4px 4px 4px rgb(230, 205, 198);  
box-shadow:4px 4px 4px 4px rgb(230, 205,  
198) }
```

Background

The CSS property to change the background color of an element to XYZ 64.6575, 64.5629, 62.4801 is called "background". The background property can be set on classes, ids or directly on the HTML element.

```
.background, #background, body{  
background: rgb(230, 205, 198) }
```

If only the background color should be changed can be used:

```
.background{ background-color: rgb(230,  
205, 198) }
```

This example shows the color as background, it is applied via the CSS property "background".

To optimize and compress your CSS code, you can use our [online CSS compressor and optimizer](#) based on csstidy. If you want to create a linear or radial gradient as background or border, check our [CSS Gradient Generator](#).

Hey! You found this booklet interesting? Support Converting Colors with the new Membership Option!

The pro membership hides all ads, plus gives you double the colors in the color bucket, and more awesome pro features!

[Learn more, Memberships starting at \\$2.50/m!](#)

**Follow me
on Twitter!**

@ConvertingColor