

Converting Colors

XYZ(64.7758, 63.8600, 65.4130)

Have a look what the booklet for
XYZ(64.7758, 63.8600, 65.4130)
contains.

| | |
|--|----|
| XYZ(64.7686, 63.8467, 65.4099) | 3 |
| <i>Conversions</i> | 4 |
| <i>Details</i> | 6 |
| <i>Harmonies</i> | 12 |
| <i>Previews</i> | 24 |
| <i>Color Blindness Simulation</i> | 28 |
| <i>CSS Examples</i> | 31 |

Color

**XYZ(64.7686, 63.8467,
65.4099)**

Conversions

Conversions Part 1

| Format | Color |
|-------------|---------------------------|
| Hex | E6CBCB |
| RGB | 230, 203, 203 |
| RGB Percent | 90%, 80%, 80% |
| CMY | 0.0980, 0.2039, 0.2039 |
| CMYK | 0.00, 0.12, 0.12, 0.10 |
| HSL | 0°, 35%, 85% |
| HSV | 0°, 12%, 90% |
| XYZ | 64.7686, 63.8467, 65.4099 |
| YIQ | 211.0730, 16.0920, 5.7240 |

Conversions

Conversions Part 2

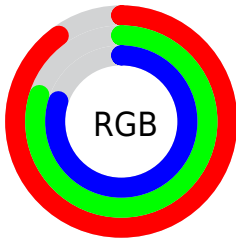
| Format | Color |
|-------------------------------------|-------------------------------|
| R _Y B | 230, 203, 203 |
| Decimal | 15125451 |
| CIE Lab | 83.89, 9.45, 3.46 |
| CIE LCh | 84, 10.064, 20.118 |
| Yxy | 63.8467, 0.3338, 0.3291 |
| Android (android.graphics.Color) | 4293315531 (0xFFE6CBCB) |
| YUV | 211.0730, -3.9800, 16.5990 |
| Hunter-Lab | 79.9041, 4.8561, 7.3978 |

Details

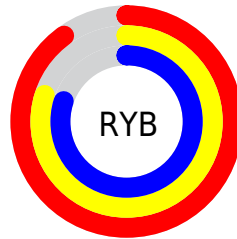
The XYZ color **64.7686, 63.8467, 65.4099** is a light color, and the websafe version is hex **FFCCCC**. A complement of this color would be **67.2080, 75.0019, 85.7982**, and the grayscale version is **61.9846, 65.2127, 71.0166**.

A 20% lighter version of the original color is **95.0500, 100.0000, 108.9000**, and **33.6278, 32.6635, 32.9661** is the 20% darker color. If you saturate the color by 10%, you get **57.1949, 52.7646, 50.3508**, and if you desaturate by 10%, it is **73.5581, 76.7081, 82.8819**.

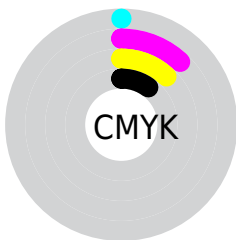
Distribution



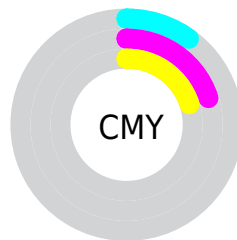
- Red (90%)
- Green (80%)
- Blue (80%)



- Red (90%)
- Yellow (80%)
- Blue (80%)



- Cyan (0%)
- Magenta (12%)
- Yellow (12%)
- Black (10%)



- Cyan (10%)
- Magenta (20%)
- Yellow (20%)

Brightness & Saturation Gradients

These gradients show how the XYZ color 64.7686, 63.8467, 65.4099 changes by changing the brightness by 10 percent. The first figure shows a shift by +10% for each color and the second figure -10%.

Similar to the brightness gradients but the following saturation gradients show a change of the XYZ color 64.7686, 63.8467, 65.4099 by changing the saturation by 10% instead.

64.7686, 63.8467,
65.4099

64.7686, 63.8467,
65.4099

431.5183,
438.6358, 462.6100

47.5375, 46.5265,
47.3401

110.7847,
110.3901, 114.2579

33.6705, 32.6615,
32.9483

140.3003,
140.3822, 145.8731

22.8023, 21.8673,
21.8161

174.6415,
175.3670, 182.8406

14.5674, 13.7594,
13.5248

214.1737,
215.7289, 225.5788

8.6007, 7.9535,
7.6559

259.2620,
261.8523, 274.5063

4.5367, 4.0652,
3.7910

310.2720,

2.0100, 1.7101,

314.1217, 330.0416

1.5114

367.5690,
372.9214, 392.6033

■ 0.6396, 0.4302,
0.2264

■ 0.0000, 0.0000,
0.0000

■ 64.7686, 63.8467,
65.4099

■ 64.7686, 63.8467,
65.4099

■ 57.1949, 52.7646,
50.3508

■ 73.5581, 76.7081,
82.8819

■ 50.7784, 43.3756,
37.5949

■ 83.6079, 91.4134,
102.8619

■ 45.4639, 35.5990,
27.0298

■ 86.4435, 95.5632,
108.4972

■ 41.1893, 29.3439,
18.5323

■ 37.8865, 24.5109,
11.9670

■ 35.4794, 20.9884,
7.1823

■ 33.8804, 18.6483,
4.0044

■ 32.9844, 17.3370,
2.2240

■ 32.6338, 16.8239,
1.5273

Harmonies

Analogous

The Analogous color harmony consists of three colors that are next to each other on the color wheel.



64.9741, 63.8467, 71.6308



64.7686, 63.8467, 65.4099



63.4541, 63.8467, 60.5790

Triad

The Triadic color harmony groups three colors that are evenly spaced from another and form a triangle on the color wheel.



64.7686, 63.8467, 65.4099



57.4770, 63.8467, 61.9927



59.9570, 63.8467, 82.2294

Complementary

The Complementary color scheme is a pair of colors which are on the opposite of each other on the color wheel.



64.7686, 63.8467, 65.4099



67.2080, 75.0019, 85.7982

Split Complementary

Split-complementary colors differ from the complementary color scheme. The scheme consists of three colors, the original color and two neighbors of the complement color.



57.9964, 63.8467, 79.2962



64.7686, 63.8467, 65.4099



56.5878, 63.8467, 67.4475

Square

The Square scheme is like the rectangle color scheme, but the four colors are evenly spaced on the color wheel.



64.7686, 63.8467, 65.4099



59.2324, 63.8467, 58.6908



56.7756, 63.8467, 73.7950



62.1599, 63.8467, 81.6015

Rectangle

The Rectangle color scheme consists of four colors that form a rectangle on the color wheel.



64.7686, 63.8467, 65.4099



62.1431, 63.8467, 58.6754



56.7756, 63.8467, 73.7950



59.2486, 63.8467, 81.6207

Sweetspot

The Sweet Spot groups the original color and five complimentary colors.



64.7704, 63.8495, 65.4113



90.2833, 93.0252, 99.4234



68.2728, 65.2490, 83.8596



19.1386, 19.6394, 20.9115



0.0000, 0.0000, 0.0000



20.3446, 21.4041, 23.3091

Same Dimension

The Same Dimension uses a secret algorithm to generate beautiful new colors.



64.7704, 63.8495, 65.4113



79.4770, 77.2128, 77.9398



68.0976, 70.5040, 66.5203



14.3772, 14.3684, 14.9201



18.4753, 9.5248, 0.8647



1.3653, 0.7040, 0.0639

Inverse Universe

The Inverse Universe completely reimagines the original color for something new.



67.2080, 75.0019, 85.7982



83.1120, 93.8432, 108.3408



63.5966, 67.7789, 84.5944



14.8073, 16.3360, 18.5171



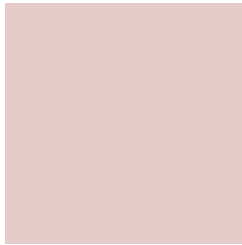
24.1008, 35.2638, 47.9195



1.7810, 2.6060, 3.5411

Previews

White Background



This preview shows how the XYZ color 64.7686, 63.8467, 65.4099 looks on a white background.

Color Contrast Check

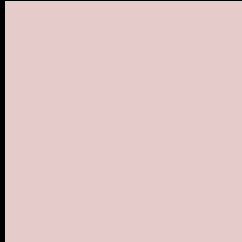
Large Text (above 18pt) WCAG AA × Fail

Any Text WCAG AA × Fail

Large Text (above 18pt) WCAG AAA × Fail

Any Text WCAG AAA × Fail

Black Background



This preview shows how the XYZ color 64.7686, 63.8467, 65.4099 looks on a black background.

Color Contrast Check

Large Text (above 18pt) WCAG AA ✓ Pass

Any Text WCAG AA ✓ Pass

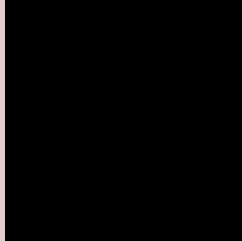
Large Text (above 18pt) WCAG AAA ✓ Pass

Any Text WCAG AAA ✓ Pass

If you want to check with other color combinations, try the [Color Contrast Checker](#).

XYZ 64.7686, 63.8467, 65.4099

Background



This preview shows how black text looks on a background with the XYZ color 64.7686, 63.8467, 65.4099.

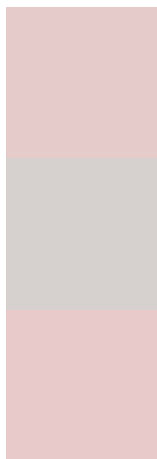


This preview shows how white text looks on a background with the XYZ color 64.7686, 63.8467,

Color Blindness Simulation

Color vision deficiency is a very complex topic, and I could not describe the different causes any better than Wikipedia does, so if you want to learn more, you should check out their [article about color blindness](#).

Dichromacy



Original Color

64.7686, 63.8467, 65.4099

Protanopia

61.4280, 63.8641, 67.4819

Deuteranopia

65.1787, 63.7087, 65.3616



Tritanopia

66.6897, 63.9388, 74.4721

Trichromacy



Original Color

64.7686, 63.8467, 65.4099

Protanomaly

62.6060, 63.7660, 66.7660

Deuteranomaly

64.8550, 63.5418, 65.3465

Tritanomaly

65.9592, 63.9834, 71.1610

Monochromacy



Original Color

64.7686, 63.8467, 65.4099

Achromatopsia

61.9161, 65.1406, 70.9381

Achromatomaly

62.8545, 64.5712, 68.8252

CSS Examples

Text

The CSS property to change the color of the text to XYZ 64.7686, 63.8467, 65.4099 is called "color". The color property can be set on classes, ids or directly on the HTML element.

This example shows how text in the color rgb(230, 203, 203) looks like.

```
.text, #text, p{  
    color:rgb(230, 203, 203)  
}
```

If you want to add a text shadow in that color use the text-shadow property, you can generate a text shadow directly with our [CSS Text Shadow Generator](#).

Here you see how black text with a 4 pixel rgb(230, 203, 203) colored shadow looks like.

```
.shadow{ text-shadow: 4px 4px 2px rgb(230, 203, 203) }
```

Border

The CSS property to change the border of an element to XYZ 64.7686, 63.8467, 65.4099 is called "border". The border property can be set on classes, ids or directly on the HTML element.

This example shows the color as border, it can be applied via the CSS property "border" or "border-color".

```
.border, #border, table{ border:4px solid rgb(230, 203, 203) }
```


If only the border color should be changed use the property `border-color`.

```
.border{ border-color:rgb(230, 203, 203) }
```

If you want to add a box shadow in that color use:

Here you see how a box with a 4 pixel `rgb(230, 203, 203)` colored shadow looks like.

```
.boxshadow{ -moz-box-shadow:4px 4px 4px  
4px rgb(230, 203, 203); -webkit-box-  
shadow:4px 4px 4px 4px rgb(230, 203, 203);  
box-shadow:4px 4px 4px 4px rgb(230, 203,  
203) }
```

Background

The CSS property to change the background color of an element to XYZ 64.7686, 63.8467, 65.4099 is called "background". The background property can be set on classes, ids or directly on the HTML element.

```
.background, #background, body{  
background: rgb(230, 203, 203) }
```

If only the background color should be changed can be used:

```
.background{ background-color: rgb(230,  
203, 203) }
```

This example shows the color as background, it is applied via the CSS property "background".

To optimize and compress your CSS code, you can use our [online CSS compressor and optimizer](#) based on csstidy. If you want to create a linear or radial gradient as background or border, check our [CSS Gradient Generator](#).

Hey! You found this booklet interesting? Support Converting Colors with the new Membership Option!

The pro membership hides all ads, plus gives you double the colors in the color bucket, and more awesome pro features!

[Learn more, Memberships starting at \\$2.50/m!](#)

**Follow me
on Twitter!**

@ConvertingColor