

Converting Colors

XYZ(64.8039, 63.4582, 60.3200)

Have a look what the booklet for
XYZ(64.8039, 63.4582, 60.3200)
contains.

XYZ(64.9025, 63.6736, 60.4993)	3
<i>Conversions</i>	4
<i>Details</i>	6
<i>Harmonies</i>	12
<i>Previews</i>	24
<i>Color Blindness Simulation</i>	28
<i>CSS Examples</i>	31

Color

**XYZ(64.9025, 63.6736,
60.4993)**

Conversions

Conversions Part 1

Format	Color
Hex	EACAC3
RGB	234, 202, 195
RGB Percent	92%, 79%, 76%
CMY	0.0824, 0.2078, 0.2353
CMYK	0.00, 0.14, 0.17, 0.08
HSL	11°, 48%, 84%
HSV	11°, 17%, 92%
XYZ	64.9025, 63.6736, 60.4993
YIQ	210.7700, 21.3190, 4.6070

Conversions

Conversions Part 2

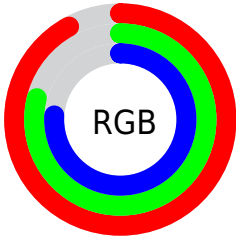
Format	Color
RYB	234, 204, 195
Decimal	15387331
CIELab	83.80, 10.14, 7.64
CIELCh	84, 12.697, 36.987
Yxy	63.6736, 0.3433, 0.3368
Android (android.graphics.Color)	4293577411 (0xFFEACAC3)
YUV	210.7700, -7.7746, 20.3727
Hunter-Lab	79.7957, 5.5419, 10.9047

Details

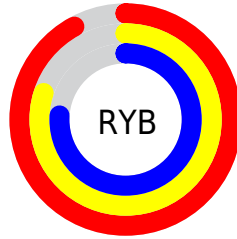
The XYZ color **64.9025, 63.6736, 60.4993** is a light color, and the websafe version is hex **FFCCCC**. A complement of this color would be **64.8255, 72.4791, 88.4155**, and the grayscale version is **61.8063, 65.0251, 70.8123**.

A 20% lighter version of the original color is **94.5707, 99.8083, 106.3760**, and **33.7577, 32.5679, 29.7063** is the 20% darker color. If you saturate the color by 10%, you get **58.2340, 54.2437, 46.2302**, and if you desaturate by 10%, it is **72.5495, 74.3958, 77.1416**.

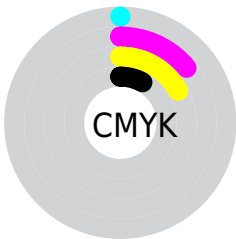
Distribution



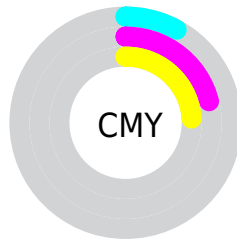
- Red (92%)
- Green (79%)
- Blue (76%)



- Red (92%)
- Yellow (80%)
- Blue (76%)



- Cyan (0%)
- Magenta (14%)
- Yellow (17%)
- Black (8%)



- Cyan (8%)
- Magenta (21%)
- Yellow (24%)

Brightness & Saturation Gradients

These gradients show how the XYZ color 64.9025, 63.6736, 60.4993 changes by changing the brightness by 10 percent. The first figure shows a shift by +10% for each color and the second figure -10%.

Similar to the brightness gradients but the following saturation gradients show a change of the XYZ color 64.9025, 63.6736, 60.4993 by changing the saturation by 10% instead.

64.9025, 63.6736,
60.4993

64.9025, 63.6736,
60.4993

431.9923,
438.0100, 444.2914

47.6464, 46.3864,
43.3933

110.9762,
110.1407, 107.1041

33.7571, 32.5508,
29.8601

140.5245,
140.0894, 137.4399

22.8690, 21.7826,
19.4813

174.9009,
175.0274, 173.0228

14.6170, 13.6972,
11.8382

214.4708,
215.3390, 214.2712

8.6356, 7.9104,
6.5124

259.5995,
261.4087, 261.6037

4.5595, 4.0377,
3.0853

310.6524,

2.0233, 1.6946,

313.6208, 315.4389

1.1384

367.9949,
372.3598, 376.1953

■ 0.6470, 0.4202,
0.0000

■ 0.0000, 0.0000,
0.0000

■ 64.9025, 63.6736,
60.4993

■ 64.9025, 63.6736,
60.4993

■ 58.2340, 54.2437,
46.2302

■ 72.5495, 74.3958,
77.1416

■ 52.4990, 46.0489,
34.2220

■ 81.2073, 86.4477,
96.2543

■ 47.6568, 39.0401,
24.3593

■ 87.7419, 96.2325,
108.5580

■ 43.6615, 33.1620,
16.5149

■ 40.4630, 28.3545,
10.5483

■ 38.0057, 24.5520,
6.3004

■ 36.2263, 21.6814,
3.5859

■ 35.0491, 19.6585,
2.1712

■ 34.7608, 19.1503,
1.8643

Harmonies

Analogous

The Analogous color harmony consists of three colors that are next to each other on the color wheel.



65.9968, 63.6736, 67.4794



64.9025, 63.6736, 60.4993



62.6393, 63.6736, 56.1403

Triad

The Triadic color harmony groups three colors that are evenly spaced from another and form a triangle on the color wheel.



64.9025, 63.6736, 60.4993



55.7198, 63.6736, 63.5007



61.1741, 63.6736, 85.7078

Complementary

The Complementary color scheme is a pair of colors which are on the opposite of each other on the color wheel.



64.9025, 63.6736, 60.4993



64.8255, 72.4791, 88.4155

Split Complementary

Split-complementary colors differ from the complementary color scheme. The scheme consists of three colors, the original color and two neighbors of the complement color.



58.4487, 63.6736, 84.4383



64.9025, 63.6736, 60.4993



55.3546, 63.6736, 71.2136

Square

The Square scheme is like the rectangle color scheme, but the four colors are evenly spaced on the color wheel.



64.9025, 63.6736, 60.4993



57.3524, 63.6736, 57.7780



56.3391, 63.6736, 78.9801



63.8018, 63.6736, 82.3269

Rectangle

The Rectangle color scheme consists of four colors that form a rectangle on the color wheel.



64.9025, 63.6736, 60.4993



60.8020, 63.6736, 55.1039



56.3391, 63.6736, 78.9801



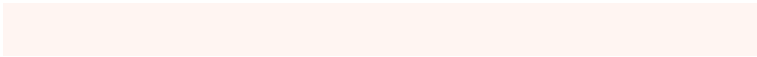
60.2386, 63.6736, 85.8146

Sweetspot

The Sweet Spot groups the original color and five complimentary colors.



64.9042, 63.6765, 60.5006



89.8180, 92.7126, 97.3628



67.3817, 62.0972, 81.4705



19.0727, 19.6322, 20.5058



0.0000, 0.0000, 0.0000



20.3446, 21.4041, 23.3091

Same Dimension

The Same Dimension uses a secret algorithm to generate beautiful new colors.



64.9042, 63.6765, 60.5006



75.9735, 73.2884, 67.2686



69.6391, 73.1461, 62.0789



15.2842, 15.4915, 15.7033



19.5983, 10.8909, 1.0692



1.6017, 0.9807, 0.1049

Inverse Universe

The Inverse Universe completely reimagines the original color for something new.



64.8255, 72.4791, 88.4155



75.8591, 85.8719, 107.1845



59.9136, 62.6552, 86.7782



15.2742, 16.6349, 19.3281



19.0194, 24.6859, 47.5054



1.5535, 2.0585, 3.7503

Previews

White Background



This preview shows how the XYZ color 64.9025, 63.6736, 60.4993 looks on a white background.

Color Contrast Check

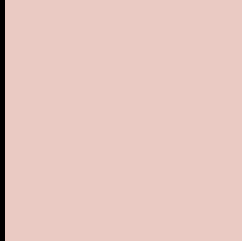
Large Text (above 18pt) WCAG AA × Fail

Any Text WCAG AA × Fail

Large Text (above 18pt) WCAG AAA × Fail

Any Text WCAG AAA × Fail

Black Background



This preview shows how the XYZ color 64.9025, 63.6736, 60.4993 looks on a black background.

Color Contrast Check

Large Text (above 18pt) WCAG AA ✓ Pass

Any Text WCAG AA ✓ Pass

Large Text (above 18pt) WCAG AAA ✓ Pass

Any Text WCAG AAA ✓ Pass

If you want to check with other color combinations, try the [Color Contrast Checker](#).

XYZ 64.9025, 63.6736, 60.4993

Background



This preview shows how black text looks on a background with the XYZ color 64.9025, 63.6736, 60.4993.

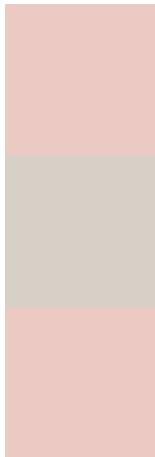


This preview shows how white text looks on a background with the XYZ color 64.9025, 63.6736,

Color Blindness Simulation

Color vision deficiency is a very complex topic, and I could not describe the different causes any better than Wikipedia does, so if you want to learn more, you should check out their [article about color blindness](#).

Dichromacy



Original Color

64.9025, 63.6736, 60.4993

Protanopia

60.7732, 63.6360, 62.5060

Deuteranopia

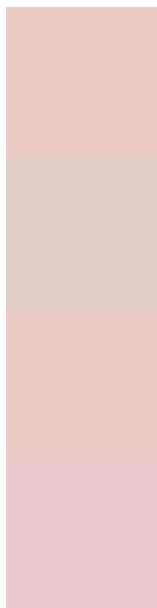
64.9025, 63.6736, 60.4993



Tritanopia

67.2812, 63.5860, 73.0172

Trichromacy



Original Color

64.9025, 63.6736, 60.4993

Protanomaly

62.2736, 63.7034, 61.8371

Deuteranomaly

64.9025, 63.6736, 60.4993

Tritanomaly

66.3004, 63.5248, 68.4416

Monochromacy



Original Color

64.9025, 63.6736, 60.4993

Achromatopsia

61.9161, 65.1406, 70.9381

Achromatomaly

62.7887, 64.5796, 66.9134

CSS Examples

Text

The CSS property to change the color of the text to XYZ 64.9025, 63.6736, 60.4993 is called "color". The color property can be set on classes, ids or directly on the HTML element.

This example shows how text in the color `rgb(234, 202, 195)` looks like.

```
.text, #text, p{  
    color:rgb(234, 202, 195)  
}
```

If you want to add a text shadow in that color use the text-shadow property, you can generate a text shadow directly with our [CSS Text Shadow Generator](#).

Here you see how black text with a 4 pixel rgb(234, 202, 195) colored shadow looks like.

```
.shadow{ text-shadow: 4px 4px 2px rgb(234, 202, 195) }
```

Border

The CSS property to change the border of an element to XYZ 64.9025, 63.6736, 60.4993 is called "border". The border property can be set on classes, ids or directly on the HTML element.

This example shows the color as border, it can be applied via the CSS property "border" or "border-color".

```
.border, #border, table{ border:4px solid rgb(234, 202, 195) }
```


If only the border color should be changed use the property `border-color`.

```
.border{ border-color:rgb(234, 202, 195) }
```

If you want to add a box shadow in that color use:

Here you see how a box with a 4 pixel `rgb(234, 202, 195)` colored shadow looks like.

```
.boxshadow{ -moz-box-shadow:4px 4px 4px 4px rgb(234, 202, 195); -webkit-box-shadow:4px 4px 4px 4px rgb(234, 202, 195); box-shadow:4px 4px 4px 4px rgb(234, 202, 195) }
```

Background

The CSS property to change the background color of an element to XYZ 64.9025, 63.6736, 60.4993 is called "background". The background property can be set on classes, ids or directly on the HTML element.

```
.background, #background, body{  
background: rgb(234, 202, 195) }
```

If only the background color should be changed can be used:

```
.background{ background-color: rgb(234,  
202, 195) }
```

This example shows the color as background, it is applied via the CSS property "background".

To optimize and compress your CSS code, you can use our [online CSS compressor and optimizer](#) based on csstidy. If you want to create a linear or radial gradient as background or border, check our [CSS Gradient Generator](#).

Hey! You found this booklet interesting? Support Converting Colors with the new Membership Option!

The pro membership hides all ads, plus gives you double the colors in the color bucket, and more awesome pro features!

[Learn more, Memberships starting at \\$2.50/m!](#)

**Follow me
on Twitter!**

@ConvertingColor