

Converting Colors

XYZ(64.8916, 63.7583, 63.2633)

Have a look what the booklet for
XYZ(64.8916, 63.7583, 63.2633)
contains.

XYZ(64.8246, 63.5670, 63.4966)	3
<i>Conversions</i>	4
<i>Details</i>	6
<i>Harmonies</i>	12
<i>Previews</i>	24
<i>Color Blindness Simulation</i>	28
<i>CSS Examples</i>	31

Color

**XYZ(64.8246, 63.5670,
63.4966)**

Conversions

Conversions Part 1

Format	Color
Hex	E8CAC8
RGB	232, 202, 200
RGB Percent	91%, 79%, 78%
CMY	0.0902, 0.2078, 0.2157
CMYK	0.00, 0.13, 0.14, 0.09
HSL	4°, 41%, 85%
HSV	4°, 14%, 91%
XYZ	64.8246, 63.5670, 63.4966
YIQ	210.7420, 18.5220, 5.7380

Conversions

Conversions Part 2

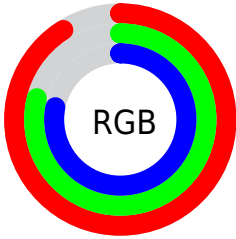
Format	Color
R _Y B	232, 202, 200
Decimal	15256264
CIE Lab	83.74, 10.21, 4.87
CIE LCh	84, 11.309, 25.515
Yxy	63.5670, 0.3378, 0.3313
Android (android.graphics.Color)	4293446344 (0xFFE8CAC8)
YUV	210.7420, -5.2958, 18.6433
Hunter-Lab	79.7289, 5.6061, 8.5913

Details

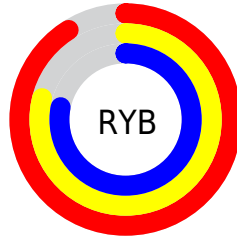
The XYZ color **64.8246, 63.5670, 63.4966** is a light color, and the websafe version is hex **FFCCCC**. A complement of this color would be **66.6814, 74.6977, 87.2483**, and the grayscale version is **61.7734, 64.9904, 70.7746**.

A 20% lighter version of the original color is **95.0500, 100.0000, 108.9000**, and **33.6827, 32.4852, 31.6891** is the 20% darker color. If you saturate the color by 10%, you get **57.5685, 53.0694, 48.7004**, and if you desaturate by 10%, it is **73.2147, 75.6730, 80.7021**.

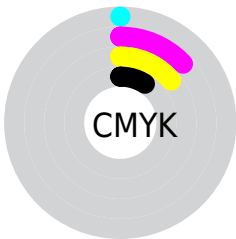
Distribution



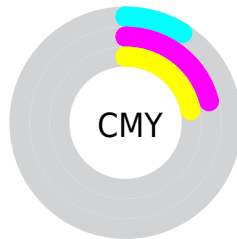
- Red (91%)
- Green (79%)
- Blue (78%)



- Red (91%)
- Yellow (79%)
- Blue (78%)



- Cyan (0%)
- Magenta (13%)
- Yellow (14%)
- Black (9%)



- Cyan (9%)
- Magenta (21%)
- Yellow (22%)

Brightness & Saturation Gradients

These gradients show how the XYZ color 64.8246, 63.5670, 63.4966 changes by changing the brightness by 10 percent. The first figure shows a shift by +10% for each color and the second figure -10%.

Similar to the brightness gradients but the following saturation gradients show a change of the XYZ color 64.8246, 63.5670, 63.4966 by changing the saturation by 10% instead.

64.8246, 63.5670,
63.4966

64.8246, 63.5670,
63.4966

431.7166,
437.6243, 455.5270

47.5830, 46.3001,
45.7995

110.8648,
109.9871, 111.4781

33.7067, 32.4827,
31.7401

140.3941,
139.9091, 142.5996

22.8302, 21.7304,
20.8999

174.7500,
174.8182, 179.0330

14.5882, 13.6590,
12.8603

214.2979,
215.0988, 221.1968

8.6153, 7.8839,
7.2028

259.4032,
261.1353, 269.5095

4.5462, 4.0207,
3.5089

310.4312,

2.0155, 1.6852,

313.3121, 324.3898

1.3600

367.7472,
372.0137, 386.2561

■ 0.6427, 0.4140,
0.1102

■ 0.0000, 0.0000,
0.0000

■ 64.8246, 63.5670,
63.4966

■ 64.8246, 63.5670,
63.4966

■ 57.5685, 53.0694,
48.7004

■ 73.2147, 75.6730,
80.7021

■ 51.3929, 44.1044,
36.2023

■ 82.7791, 89.4421,
100.4135

■ 46.2475, 36.6029,
25.8881

■ 87.0890, 95.8960,
108.5274

■ 42.0762, 30.4871,
17.6324

■ 38.8174, 25.6723,
11.2970

■ 36.4026, 22.0641,
6.7270

■ 34.7535, 19.5554,
3.7430

■ 33.7770, 18.0207,
2.1280

■ 33.4433, 17.4845,
1.6122

Harmonies

Analogous

The Analogous color harmony consists of three colors that are next to each other on the color wheel.



65.2978, 63.5670, 70.2870



64.8246, 63.5670, 63.4966



63.1586, 63.5670, 58.5569

Triad

The Triadic color harmony groups three colors that are evenly spaced from another and form a triangle on the color wheel.



64.8246, 63.5670, 63.4966



56.5729, 63.5670, 61.7663



60.0464, 63.5670, 83.7395

Complementary

The Complementary color scheme is a pair of colors which are on the opposite of each other on the color wheel.



64.8246, 63.5670, 63.4966



66.6814, 74.6977, 87.2483

Split Complementary

Split-complementary colors differ from the complementary color scheme. The scheme consists of three colors, the original color and two neighbors of the complement color.



57.7589, 63.5670, 81.0908



64.8246, 63.5670, 63.4966



55.7886, 63.5670, 68.1513

Square

The Square scheme is like the rectangle color scheme, but the four colors are evenly spaced on the color wheel.



64.8246, 63.5670, 63.4966



58.3878, 63.5670, 57.6068



56.2168, 63.5670, 75.2640



62.4958, 63.5670, 82.2833

Rectangle

The Rectangle color scheme consists of four colors that form a rectangle on the color wheel.



64.8246, 63.5670, 63.4966



61.6190, 63.5670, 56.8162



56.2168, 63.5670, 75.2640



59.2337, 63.5670, 83.2949

Sweetspot

The Sweet Spot groups the original color and five complimentary colors.



64.8264, 63.5698, 63.4979



90.4762, 93.4110, 99.4877



68.2730, 64.2009, 83.9521



19.1872, 19.7366, 20.9276



0.0000, 0.0000, 0.0000



20.3446, 21.4041, 23.3091

Same Dimension

The Same Dimension uses a secret algorithm to generate beautiful new colors.



64.8264, 63.5698, 63.4979



77.2186, 74.2739, 72.3226



68.6726, 71.2624, 64.7800



14.4491, 14.5121, 14.9440



18.5968, 9.7677, 0.9052



1.3999, 0.7731, 0.0754

Inverse Universe

The Inverse Universe completely reimagines the original color for something new.



66.6814, 74.6977, 87.2483



80.0006, 90.9650, 107.9493



62.5337, 66.4023, 85.8657



14.7261, 16.1736, 18.4900



21.9637, 30.9895, 47.2071



1.6466, 2.3371, 3.4963

Previews

White Background



This preview shows how the XYZ color 64.8246, 63.5670, 63.4966 looks on a white background.

Color Contrast Check

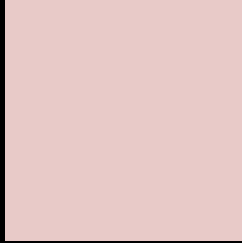
Large Text (above 18pt) WCAG AA × Fail

Any Text WCAG AA × Fail

Large Text (above 18pt) WCAG AAA × Fail

Any Text WCAG AAA × Fail

Black Background



This preview shows how the XYZ color 64.8246, 63.5670, 63.4966 looks on a black background.

Color Contrast Check

Large Text (above 18pt) WCAG AA ✓ Pass

Any Text WCAG AA ✓ Pass

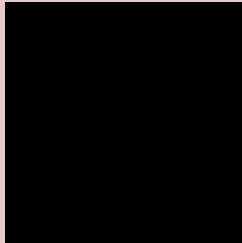
Large Text (above 18pt) WCAG AAA ✓ Pass

Any Text WCAG AAA ✓ Pass

If you want to check with other color combinations, try the [Color Contrast Checker](#).

XYZ 64.8246, 63.5670, 63.4966

Background



This preview shows how black text looks on a background with the XYZ color 64.8246, 63.5670, 63.4966.



This preview shows how white text looks on a background with the XYZ color 64.8246, 63.5670,

Color Blindness Simulation

Color vision deficiency is a very complex topic, and I could not describe the different causes any better than Wikipedia does, so if you want to learn more, you should check out their [article about color blindness](#).

Dichromacy



Original Color

64.8246, 63.5670, 63.4966

Protanopia

61.0669, 63.7197, 65.5805

Deuteranopia

64.8246, 63.5670, 63.4966



Tritanopia

66.8517, 63.7073, 73.0632

Trichromacy



Original Color

64.8246, 63.5670, 63.4966

Protanomaly

62.5508, 63.7790, 64.8909

Deuteranomaly

64.8246, 63.5670, 63.4966

Tritanomaly

66.1238, 63.7501, 69.7927

Monochromacy



Original Color

64.8246, 63.5670, 63.4966

Achromatopsia

61.9161, 65.1406, 70.9381

Achromatomaly

63.0318, 64.6768, 68.1932

CSS Examples

Text

The CSS property to change the color of the text to XYZ 64.8246, 63.5670, 63.4966 is called "color". The color property can be set on classes, ids or directly on the HTML element.

This example shows how text in the color `rgb(232, 202, 200)` looks like.

```
.text, #text, p{  
    color:rgb(232, 202, 200)  
}
```

If you want to add a text shadow in that color use the text-shadow property, you can generate a text shadow directly with our [CSS Text Shadow Generator](#).

Here you see how black text with a 4 pixel rgb(232, 202, 200) colored shadow looks like.

```
.shadow{ text-shadow: 4px 4px 2px rgb(232, 202, 200) }
```

Border

The CSS property to change the border of an element to XYZ 64.8246, 63.5670, 63.4966 is called "border". The border property can be set on classes, ids or directly on the HTML element.

This example shows the color as border, it can be applied via the CSS property "border" or "border-color".

```
.border, #border, table{ border:4px solid rgb(232, 202, 200) }
```


If only the border color should be changed use the property `border-color`.

```
.border{ border-color:rgb(232, 202, 200) }
```

If you want to add a box shadow in that color use:

Here you see how a box with a 4 pixel `rgb(232, 202, 200)` colored shadow looks like.

```
.boxshadow{ -moz-box-shadow:4px 4px 4px  
4px rgb(232, 202, 200); -webkit-box-  
shadow:4px 4px 4px 4px rgb(232, 202, 200);  
box-shadow:4px 4px 4px 4px rgb(232, 202,  
200) }
```

Background

The CSS property to change the background color of an element to XYZ 64.8246, 63.5670, 63.4966 is called "background". The background property can be set on classes, ids or directly on the HTML element.

```
.background, #background, body{  
background: rgb(232, 202, 200) }
```

If only the background color should be changed can be used:

```
.background{ background-color: rgb(232,  
202, 200) }
```

This example shows the color as background, it is applied via the CSS property "background".

To optimize and compress your CSS code, you can use our [online CSS compressor and optimizer](#) based on csstidy. If you want to create a linear or radial gradient as background or border, check our [CSS Gradient Generator](#).

Hey! You found this booklet interesting? Support Converting Colors with the new Membership Option!

The pro membership hides all ads, plus gives you double the colors in the color bucket, and more awesome pro features!

[Learn more, Memberships starting at \\$2.50/m!](#)

**Follow me
on Twitter!**

@ConvertingColor