

Converting Colors

XYZ(64.9032, 65.4055, 67.2337)

Have a look what the booklet for
XYZ(64.9032, 65.4055, 67.2337)
contains.

XYZ(64.6963, 65.2022, 66.9330)	3
<i>Conversions</i>	4
<i>Details</i>	6
<i>Harmonies</i>	12
<i>Previews</i>	24
<i>Color Blindness Simulation</i>	28
<i>CSS Examples</i>	31

Color

**XYZ(64.6963, 65.2022,
66.9330)**

Conversions

Conversions Part 1

Format	Color
Hex	E2CFCD
RGB	226, 207, 205
RGB Percent	89%, 81%, 80%
CMY	0.1137, 0.1882, 0.1961
CMYK	0.00, 0.08, 0.09, 0.11
HSL	6°, 27%, 85%
HSV	6°, 9%, 89%
XYZ	64.6963, 65.2022, 66.9330
YIQ	212.4530, 11.9660, 3.4060

Conversions

Conversions Part 2

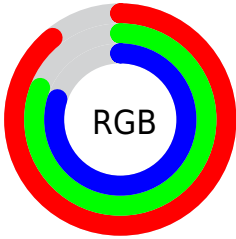
Format	Color
R_{YB}	226, 207, 205
Decimal	14864333
CIE _{Lab}	84.59, 6.26, 3.37
CIE _{LCh}	85, 7.111, 28.307
Yxy	65.2022, 0.3287, 0.3313
Android (android.graphics.Color)	4293054413 (0xFFE2CFCD)
YUV	212.4530, -3.6743, 11.8807
Hunter-Lab	80.7479, 1.7078, 7.3772

Details

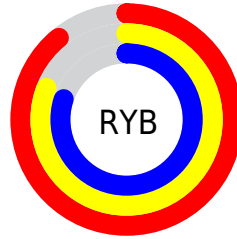
The XYZ color **64.6963, 65.2022, 66.9330** is a light color, and the websafe version is hex **CCCCCC**. A complement of this color would be **65.5597, 71.7800, 82.3518**, and the grayscale version is **62.9004, 66.1761, 72.0658**.

A 20% lighter version of the original color is **95.0500, 100.0000, 108.9000**, and **33.7717, 33.6748, 33.9981** is the 20% darker color. If you saturate the color by 10%, you get **57.5270, 54.9181, 52.0420**, and if you desaturate by 10%, it is **72.9047, 76.9322, 84.1160**.

Distribution



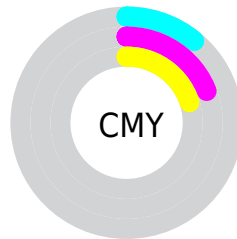
- Red (89%)
- Green (81%)
- Blue (80%)



- Red (89%)
- Yellow (81%)
- Blue (80%)



- Cyan (0%)
- Magenta (8%)
- Yellow (9%)
- Black (11%)



- Cyan (11%)
- Magenta (19%)
- Yellow (20%)

Brightness & Saturation Gradients

These gradients show how the XYZ color 64.6963, 65.2022, 66.9330 changes by changing the brightness by 10 percent. The first figure shows a shift by +10% for each color and the second figure -10%.

Similar to the brightness gradients but the following saturation gradients show a change of the XYZ color 64.6963, 65.2022, 66.9330 by changing the saturation by 10% instead.

64.6963, 65.2022,
66.9330

64.6963, 65.2022,
66.9330

431.2623,
443.5182, 468.2012

47.4786, 47.6251,
48.5689

110.6813,
112.3405, 116.4641

33.6237, 33.5301,
33.9145

140.1793,
142.6705, 148.4683

22.7662, 22.5328,
22.5511

174.5015,
178.0201, 185.8562

14.5407, 14.2489,
14.0602

214.0132,
218.7739, 229.0464

8.5819, 8.2940,
8.0233

259.0797,
265.3163, 278.4575

4.5244, 4.2836,
4.0219

310.0665,

2.0029, 1.8335,

318.0315, 334.5080

1.6374

367.3389,
377.3040, 397.6164

■ 0.6356, 0.5079,
0.3173

■ 0.0000, 0.0000,
0.0000

■ 64.6963, 65.2022,
66.9330

■ 64.6963, 65.2022,
66.9330

■ 57.5270, 54.9181,
52.0420

■ 72.9047, 76.9322,
84.1160

■ 51.3500, 46.0157,
39.3421

■ 82.1855, 90.1522,
103.6778

■ 46.1231, 38.4387,
28.7311

■ 85.1743, 94.9089,
108.4378

■ 41.7990, 32.1237,
20.0970

■ 38.3263, 27.0019,
13.3173

■ 35.6482, 22.9980,
8.2559

■ 33.7013, 20.0283,
4.7579

■ 32.4120, 17.9970,
2.6406

■ 31.6798, 16.7858,
1.6162

Harmonies

Analogous

The Analogous color harmony consists of three colors that are next to each other on the color wheel.



65.0709, 65.2022, 71.2524



64.6963, 65.2022, 66.9330



63.5885, 65.2022, 63.8198

Triad

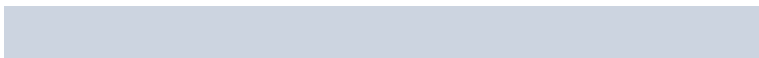
The Triadic color harmony groups three colors that are evenly spaced from another and form a triangle on the color wheel.



64.6963, 65.2022, 66.9330



59.4142, 65.2022, 66.5043



61.8827, 65.2022, 80.0858

Complementary

The Complementary color scheme is a pair of colors which are on the opposite of each other on the color wheel.



64.6963, 65.2022, 66.9330



65.5597, 71.7800, 82.3518

Split Complementary

Split-complementary colors differ from the complementary color scheme. The scheme consists of three colors, the original color and two neighbors of the complement color.



60.3845, 65.2022, 78.6869



64.6963, 65.2022, 66.9330



58.9745, 65.2022, 70.7365

Square

The Square scheme is like the rectangle color scheme, but the four colors are evenly spaced on the color wheel.



64.6963, 65.2022, 66.9330



60.5380, 65.2022, 63.5798



59.3267, 65.2022, 75.2163



63.4300, 65.2022, 78.9635

Rectangle

The Rectangle color scheme consists of four colors that form a rectangle on the color wheel.



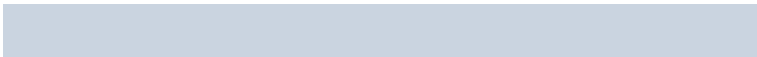
64.6963, 65.2022, 66.9330



62.5928, 65.2022, 62.7813



59.3267, 65.2022, 75.2163



61.3568, 65.2022, 79.8937

Sweetspot

The Sweet Spot groups the original color and five complimentary colors.



64.6981, 65.2051, 66.9344



91.6746, 95.1811, 101.8191



66.6846, 65.2277, 79.7752



19.4337, 20.1034, 21.3987



0.0000, 0.0000, 0.0000



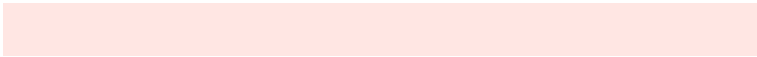
20.3446, 21.4041, 23.3091

Same Dimension

The Same Dimension uses a secret algorithm to generate beautiful new colors.



64.6981, 65.2051, 66.9344



83.2913, 83.1895, 84.3041



67.2616, 70.3321, 67.7889



13.8119, 13.9098, 14.2637



18.0904, 9.6187, 0.9031



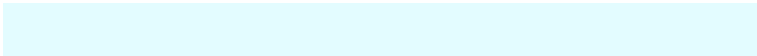
1.2904, 0.7397, 0.0748

Inverse Universe

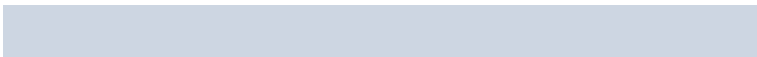
The Inverse Universe completely reimagines the original color for something new.



65.5597, 71.7800, 82.3518



84.6247, 93.3667, 108.1691



62.8885, 66.4377, 81.4614



13.9989, 15.3370, 17.6102



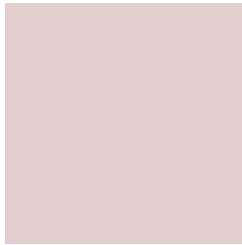
20.2569, 27.9834, 45.3821



1.4371, 2.0056, 3.1566

Previews

White Background



This preview shows how the XYZ color 64.6963, 65.2022, 66.9330 looks on a white background.

Color Contrast Check

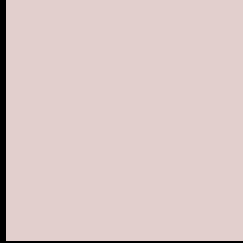
Large Text (above 18pt) WCAG AA × Fail

Any Text WCAG AA × Fail

Large Text (above 18pt) WCAG AAA × Fail

Any Text WCAG AAA × Fail

Black Background



This preview shows how the XYZ color 64.6963, 65.2022, 66.9330 looks on a black background.

Color Contrast Check

Large Text (above 18pt) WCAG AA ✓ Pass

Any Text WCAG AA ✓ Pass

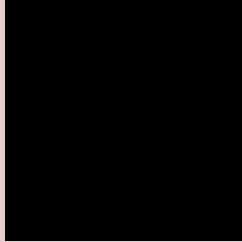
Large Text (above 18pt) WCAG AAA ✓ Pass

Any Text WCAG AAA ✓ Pass

If you want to check with other color combinations, try the [Color Contrast Checker](#).

XYZ 64.6963, 65.2022, 66.9330

Background



This preview shows how black text looks on a background with the XYZ color 64.6963, 65.2022, 66.9330.



This preview shows how white text looks on a background with the XYZ color 64.6963, 65.2022,

Color Blindness Simulation

Color vision deficiency is a very complex topic, and I could not describe the different causes any better than Wikipedia does, so if you want to learn more, you should check out their [article about color blindness](#).

Dichromacy



Original Color

64.6963, 65.2022, 66.9330

Protanopia

62.6280, 65.1971, 68.3149

Deuteranopia

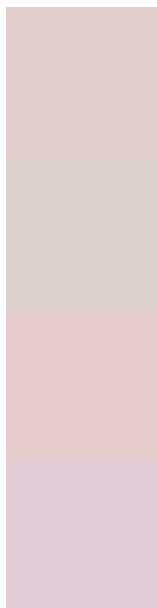
66.6651, 65.1344, 67.4511



Tritanopia

66.8774, 65.3771, 77.5008

Trichromacy



Original Color

64.6963, 65.2022, 66.9330

Protanomaly

63.4562, 65.2728, 67.6469

Deuteranomaly

65.9269, 65.1078, 67.4849

Tritanomaly

66.0156, 65.3798, 73.4301

Monochromacy



Original Color

64.6963, 65.2022, 66.9330

Achromatopsia

62.5785, 65.8375, 71.6970

Achromatomaly

63.1705, 65.4483, 69.6250

CSS Examples

Text

The CSS property to change the color of the text to XYZ 64.6963, 65.2022, 66.9330 is called "color". The color property can be set on classes, ids or directly on the HTML element.

This example shows how text in the color rgb(226, 207, 205) looks like.

```
.text, #text, p{  
    color:rgb(226, 207, 205)  
}
```

If you want to add a text shadow in that color use the text-shadow property, you can generate a text shadow directly with our [CSS Text Shadow Generator](#).

Here you see how black text with a 4 pixel rgb(226, 207, 205) colored shadow looks like.

```
.shadow{ text-shadow: 4px 4px 2px rgb(226, 207, 205) }
```

Border

The CSS property to change the border of an element to XYZ 64.6963, 65.2022, 66.9330 is called "border". The border property can be set on classes, ids or directly on the HTML element.

This example shows the color as border, it can be applied via the CSS property "border" or "border-color".

```
.border, #border, table{ border:4px solid rgb(226, 207, 205) }
```


If only the border color should be changed use the property `border-color`.

```
.border{ border-color:rgb(226, 207, 205) }
```

If you want to add a box shadow in that color use:

Here you see how a box with a 4 pixel `rgb(226, 207, 205)` colored shadow looks like.

```
.boxshadow{ -moz-box-shadow:4px 4px 4px  
4px rgb(226, 207, 205); -webkit-box-  
shadow:4px 4px 4px 4px rgb(226, 207, 205);  
box-shadow:4px 4px 4px 4px rgb(226, 207,  
205) }
```

Background

The CSS property to change the background color of an element to XYZ 64.6963, 65.2022, 66.9330 is called "background". The background property can be set on classes, ids or directly on the HTML element.

```
.background, #background, body{  
background: rgb(226, 207, 205) }
```

If only the background color should be changed can be used:

```
.background{ background-color: rgb(226,  
207, 205) }
```

This example shows the color as background, it is applied via the CSS property "background".

To optimize and compress your CSS code, you can use our [online CSS compressor and optimizer](#) based on csstidy. If you want to create a linear or radial gradient as background or border, check our [CSS Gradient Generator](#).

Hey! You found this booklet interesting? Support Converting Colors with the new Membership Option!

The pro membership hides all ads, plus gives you double the colors in the color bucket, and more awesome pro features!

[Learn more, Memberships starting at \\$2.50/m!](#)

**Follow me
on Twitter!**

@ConvertingColor