

Converting Colors

XYZ(64.9370, 65.2264, 71.4548)

Have a look what the booklet for
XYZ(64.9370, 65.2264, 71.4548)
contains.

XYZ(64.9370, 65.2264, 71.4548)	3
<i>Conversions</i>	4
<i>Details</i>	6
<i>Harmonies</i>	12
<i>Previews</i>	24
<i>Color Blindness Simulation</i>	28
<i>CSS Examples</i>	31

Color

**XYZ(64.9370, 65.2264,
71.4548)**

Conversions

Conversions Part 1

Format	Color
Hex	E0CFD4
RGB	224, 207, 212
RGB Percent	88%, 81%, 83%
CMY	0.1216, 0.1882, 0.1686
CMYK	0.00, 0.08, 0.05, 0.12
HSL	342°, 22%, 85%
HSV	342°, 8%, 88%
XYZ	64.9370, 65.2264, 71.4548
YIQ	212.6530, 8.5270, 5.1590

Conversions

Conversions Part 2

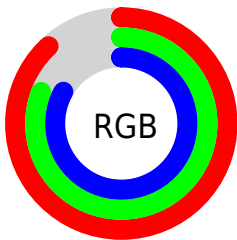
Format	Color
R_{YB}	224, 207, 212
Decimal	14733268
CIE Lab	84.60, 6.75, -0.35
CIE LCh	85, 6.761, 357.008
Yxy	65.2264, 0.3221, 0.3235
Android (android.graphics.Color)	4292923348 (0xFFE0CFD4)
YUV	212.6530, -0.3219, 9.9513
Hunter-Lab	80.7629, 2.1871, 4.0773

Details

The XYZ color **64.9370, 65.2264, 71.4548** is a light color, and the websafe version is hex **CCCCCC**. A complement of this color would be **65.1765, 71.6929, 77.4243**, and the grayscale version is **63.0138, 66.2954, 72.1957**.

A 20% lighter version of the original color is **95.0500, 100.0000, 108.9000**, and **33.8392, 33.6518, 36.6102** is the 20% darker color. If you saturate the color by 10%, you get **57.9924, 54.3744, 59.7745**, and if you desaturate by 10%, it is **72.8507, 77.7020, 84.4239**.

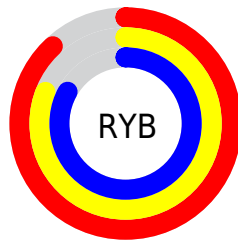
Distribution



Red (88%)

Green (81%)

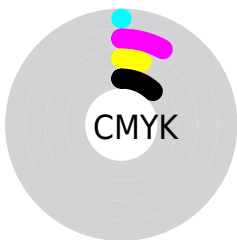
Blue (83%)



Red (88%)

Yellow (81%)

Blue (83%)

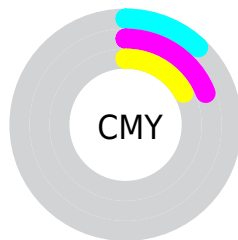


Cyan (0%)

Magenta (8%)

Yellow (5%)

Black (12%)



Cyan (12%)

Magenta (19%)

Yellow (17%)

Brightness & Saturation Gradients

These gradients show how the XYZ color 64.9370, 65.2264, 71.4548 changes by changing the brightness by 10 percent. The first figure shows a shift by +10% for each color and the second figure -10%.

Similar to the brightness gradients but the following saturation gradients show a change of the XYZ color 64.9370, 65.2264, 71.4548 by changing the saturation by 10% instead.

64.9370, 65.2264,
71.4548

64.9370, 65.2264,
71.4548

432.1143,
443.6051, 484.5682

47.6745, 47.6447,
52.2293

111.0255,
112.3753, 122.9816

33.7794, 33.5456,
36.8044

140.5822,
142.7112, 156.1200

22.8862, 22.5447,
24.7615

174.9677,
178.0674, 194.7331

14.6298, 14.2577,
15.6820

214.5473,
218.8282, 239.2394

8.6446, 8.3001,
9.1475

259.6864,
265.3779, 290.0576

4.5653, 4.2876,
4.7394

310.7504,

2.0267, 1.8357,

318.1011, 347.6060

2.0391

368.1046,
377.3820, 412.3034

■ 0.6489, 0.5093,
0.5792

■ 0.0000, 0.0000,
0.0000

■ 64.9370, 65.2264,
71.4548

■ 64.9370, 65.2264,
71.4548

■ 57.9924, 54.3744,
59.7745

■ 72.8507, 77.7020,
84.4239

■ 51.9734, 45.0709,
49.3386

■ 81.7636, 91.8556,
98.7159

■ 46.8416, 37.2471,
40.1062

■ 84.5509, 94.5875,
108.4087

■ 42.5535, 30.8262,
32.0324

■ 39.0620, 25.7241,
25.0696

■ 36.3149, 21.8477,
19.1665

■ 34.2537, 19.0916,
14.2673

■ 32.8103, 17.3323,
10.3106

■ 31.8945, 16.4028,
7.2239

Harmonies

Analogous

The Analogous color harmony consists of three colors that are next to each other on the color wheel.



64.4600, 65.2264, 75.6394



64.9370, 65.2264, 71.4548



64.6154, 65.2264, 67.3153

Triad

The Triadic color harmony groups three colors that are evenly spaced from another and form a triangle on the color wheel.



64.9370, 65.2264, 71.4548



60.6881, 65.2264, 63.8751



60.4301, 65.2264, 78.2166

Complementary

The Complementary color scheme is a pair of colors which are on the opposite of each other on the color wheel.



64.9370, 65.2264, 71.4548



65.1765, 71.6929, 77.4243

Split Complementary

Split-complementary colors differ from the complementary color scheme. The scheme consists of three colors, the original color and two neighbors of the complement color.



59.4478, 65.2264, 74.8591



64.9370, 65.2264, 71.4548



59.5951, 65.2264, 66.5935

Square

The Square scheme is like the rectangle color scheme, but the four colors are evenly spaced on the color wheel.



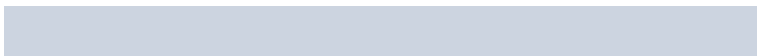
64.9370, 65.2264, 71.4548



62.1472, 65.2264, 63.0454



59.1447, 65.2264, 70.5879



61.8445, 65.2264, 79.6412

Rectangle

The Rectangle color scheme consists of four colors that form a rectangle on the color wheel.



64.9370, 65.2264, 71.4548



63.9942, 65.2264, 65.1173



59.1447, 65.2264, 70.5879



60.0393, 65.2264, 77.2701

Sweetspot

The Sweet Spot groups the original color and five complimentary colors.



64.9388, 65.2292, 71.4562



92.8701, 96.5593, 105.3401



64.9529, 65.0550, 79.6555



19.9009, 20.7037, 22.5845



0.0000, 0.0000, 0.0000



20.3446, 21.4041, 23.3091

Same Dimension

The Same Dimension uses a secret algorithm to generate beautiful new colors.



64.9388, 65.2292, 71.4562



85.6606, 85.2214, 93.4384



65.1506, 66.6459, 68.4650



13.8722, 13.7665, 15.0970



18.5068, 9.4697, 4.0686



1.3212, 0.6717, 0.4842

Inverse Universe

The Inverse Universe completely reimagines the original color for something new.



64.9388, 65.2292, 71.4562



85.6606, 85.2214, 93.4384



64.9399, 70.1511, 80.6398



13.8722, 13.7665, 15.0970



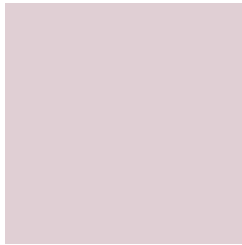
18.5068, 9.4697, 4.0686



1.3212, 0.6717, 0.4842

Previews

White Background



This preview shows how the XYZ color 64.9370, 65.2264, 71.4548 looks on a white background.

Color Contrast Check

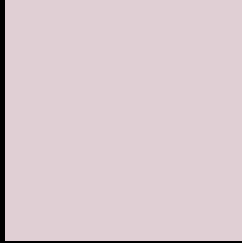
Large Text (above 18pt) WCAG AA × Fail

Any Text WCAG AA × Fail

Large Text (above 18pt) WCAG AAA × Fail

Any Text WCAG AAA × Fail

Black Background



This preview shows how the XYZ color 64.9370, 65.2264, 71.4548 looks on a black background.

Color Contrast Check

Large Text (above 18pt) WCAG AA ✓ Pass

Any Text WCAG AA ✓ Pass

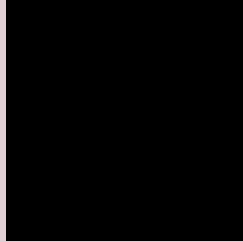
Large Text (above 18pt) WCAG AAA ✓ Pass

Any Text WCAG AAA ✓ Pass

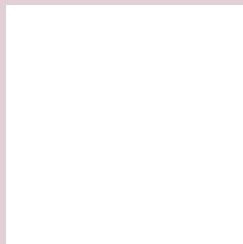
If you want to check with other color combinations, try the [Color Contrast Checker](#).

XYZ 64.9370, 65.2264, 71.4548

Background



This preview shows how black text looks on a background with the XYZ color 64.9370, 65.2264, 71.4548.



This preview shows how white text looks on a background with the XYZ color 64.9370, 65.2264,

71.4548.

Color Blindness Simulation

Color vision deficiency is a very complex topic, and I could not describe the different causes any better than Wikipedia does, so if you want to learn more, you should check out their [article about color blindness](#).

Dichromacy



Original Color

64.9370, 65.2264, 71.4548

Protanopia

62.9157, 65.2444, 72.8957

Deuteranopia

66.6700, 65.4050, 71.3979



Tritanopia

66.0675, 64.9441, 78.1606

Trichromacy



Original Color

64.9370, 65.2264, 71.4548

Protanomaly

63.7241, 65.3105, 72.1983

Deuteranomaly

65.9499, 65.3901, 71.4330

Tritanomaly

65.7775, 65.2121, 75.4500

Monochromacy



Original Color

64.9370, 65.2264, 71.4548

Achromatopsia

63.2451, 66.5387, 72.4607

Achromatomaly

63.9198, 66.1443, 72.3490

CSS Examples

Text

The CSS property to change the color of the text to XYZ 64.9370, 65.2264, 71.4548 is called "color". The color property can be set on classes, ids or directly on the HTML element.

This example shows how text in the color rgb(224, 207, 212) looks like.

```
.text, #text, p{  
    color:rgb(224, 207, 212)  
}
```

If you want to add a text shadow in that color use the text-shadow property, you can generate a text shadow directly with our [CSS Text Shadow Generator](#).

Here you see how black text with a 4 pixel rgb(224, 207, 212) colored shadow looks like.

```
.shadow{ text-shadow: 4px 4px 2px rgb(224, 207, 212) }
```

Border

The CSS property to change the border of an element to XYZ 64.9370, 65.2264, 71.4548 is called "border". The border property can be set on classes, ids or directly on the HTML element.

This example shows the color as border, it can be applied via the CSS property "border" or "border-color".

```
.border, #border, table{ border:4px solid rgb(224, 207, 212) }
```


If only the border color should be changed use the property `border-color`.

```
.border{ border-color:rgb(224, 207, 212) }
```

If you want to add a box shadow in that color use:

Here you see how a box with a 4 pixel `rgb(224, 207, 212)` colored shadow looks like.

```
.boxshadow{ -moz-box-shadow:4px 4px 4px  
4px rgb(224, 207, 212); -webkit-box-  
shadow:4px 4px 4px 4px rgb(224, 207, 212);  
box-shadow:4px 4px 4px 4px rgb(224, 207,  
212) }
```

Background

The CSS property to change the background color of an element to XYZ 64.9370, 65.2264, 71.4548 is called "background". The background property can be set on classes, ids or directly on the HTML element.

```
.background, #background, body{  
background: rgb(224, 207, 212) }
```

If only the background color should be changed can be used:

```
.background{ background-color: rgb(224,  
207, 212) }
```

This example shows the color as background, it is applied via the CSS property "background".

To optimize and compress your CSS code, you can use our [online CSS compressor and optimizer](#) based on csstidy. If you want to create a linear or radial gradient as background or border, check our [CSS Gradient Generator](#).

Hey! You found this booklet interesting? Support Converting Colors with the new Membership Option!

The pro membership hides all ads, plus gives you double the colors in the color bucket, and more awesome pro features!

[Learn more, Memberships starting at \\$2.50/m!](#)

**Follow me
on Twitter!**

@ConvertingColor