

Converting Colors

XYZ(64.9988, 65.6778, 61.2846)

Have a look what the booklet for
XYZ(64.9988, 65.6778, 61.2846)
contains.

XYZ(65.1528, 65.9203, 61.5145)	3
<i>Conversions</i>	4
<i>Details</i>	6
<i>Harmonies</i>	12
<i>Previews</i>	24
<i>Color Blindness Simulation</i>	28
<i>CSS Examples</i>	31

Color

**XYZ(65.1528, 65.9203,
61.5145)**

Conversions

Conversions Part 1

Format	Color
Hex	E6D0C4
RGB	230, 208, 196
RGB Percent	90%, 82%, 77%
CMY	0.0980, 0.1843, 0.2314
CMYK	0.00, 0.10, 0.15, 0.10
HSL	21°, 40%, 84%
HSV	21°, 15%, 90%
XYZ	65.1528, 65.9203, 61.5145
YIQ	213.2100, 16.9640, 0.9320

Conversions

Conversions Part 2

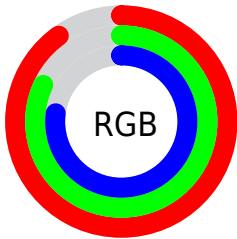
Format	Color
R _{YB}	230, 215, 196
Decimal	15126724
CIE Lab	84.96, 5.71, 8.72
CIE LCh	85, 10.426, 56.812
Yxy	65.9203, 0.3383, 0.3423
Android (android.graphics.Color)	4293316804 (0xFFE6D0C4)
YUV	213.2100, -8.4845, 14.7248
Hunter-Lab	81.1913, 1.1543, 11.9129

Details

The XYZ color **65.1528, 65.9203, 61.5145** is a light color, and the websafe version is hex **CCCCCC**. A complement of this color would be **62.1189, 67.5902, 84.6356**, and the grayscale version is **63.4349, 66.7385, 72.6782**.

A 20% lighter version of the original color is **94.7296, 99.8718, 107.2129**, and **33.8936, 34.0629, 30.3796** is the 20% darker color. If you saturate the color by 10%, you get **59.2742, 58.0361, 47.6139**, and if you desaturate by 10%, it is **71.7767, 74.6516, 77.6451**.

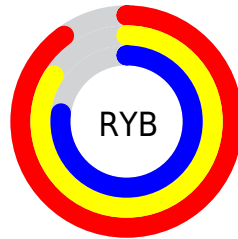
Distribution



Red (90%)

Green (82%)

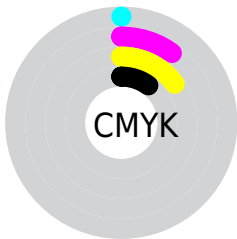
Blue (77%)



Red (90%)

Yellow (84%)

Blue (77%)

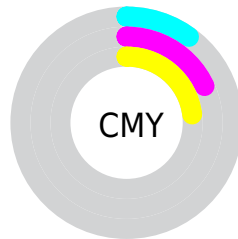


Cyan (0%)

Magenta (10%)

Yellow (15%)

Black (10%)



Cyan (10%)

Magenta (18%)

Yellow (23%)

Brightness & Saturation Gradients

These gradients show how the XYZ color 65.1528, 65.9203, 61.5145 changes by changing the brightness by 10 percent. The first figure shows a shift by +10% for each color and the second figure -10%.

Similar to the brightness gradients but the following saturation gradients show a change of the XYZ color 65.1528, 65.9203, 61.5145 by changing the saturation by 10% instead.

65.1528, 65.9203,
61.5145

65.1528, 65.9203,
61.5145

432.8774,
446.0918, 448.1166

47.8501, 48.2077,
44.2073

111.3340,
113.3719, 108.5883

33.9190, 33.9914,
30.4951

140.9433,
143.8798, 139.1920

22.9940, 22.8870,
19.9595

175.3854,
179.4215, 175.0649

14.7097, 14.5101,
12.1818

215.0259,
220.3814, 216.6255

8.7009, 8.4763,
6.7436

260.2299,
267.1440, 264.2925

4.6022, 4.4012,
3.2262

311.3630,

2.0481, 1.9004,

320.0937, 318.4843

1.2113

368.7903,
379.6148, 379.6195

■ 0.6608, 0.5486,
0.0000

■ 0.0000, 0.0000,
0.0000

■ 65.1528, 65.9203,
61.5145

■ 65.1528, 65.9203,
61.5145

■ 59.2742, 58.0361,
47.6139

■ 71.7767, 74.6516,
77.6451

■ 54.1081, 50.9643,
35.8400

■ 79.1666, 84.2460,
96.0943

■ 49.6268, 44.6806,
26.0877

■ 85.6963, 94.0690,
108.2482

■ 45.7988, 39.1559,
18.2410

■ 86.4434, 95.5631,
108.4972

■ 42.5897, 34.3595,
12.1721

■ 39.9618, 30.2580,
7.7373

■ 37.8720, 26.8149,
4.7699

■ 36.2697, 23.9895,
3.0667

■ 35.5912, 22.7388,
2.5132

Harmonies

Analogous

The Analogous color harmony consists of three colors that are next to each other on the color wheel.



66.7610, 65.9203, 66.1142



65.1528, 65.9203, 61.5145



62.9060, 65.9203, 59.6534

Triad

The Triadic color harmony groups three colors that are evenly spaced from another and form a triangle on the color wheel.



65.1528, 65.9203, 61.5145



58.2656, 65.9203, 71.0612



64.7086, 65.9203, 83.9130

Complementary

The Complementary color scheme is a pair of colors which are on the opposite of each other on the color wheel.



65.1528, 65.9203, 61.5145



62.1189, 67.5902, 84.6356

Split Complementary

Split-complementary colors differ from the complementary color scheme. The scheme consists of three colors, the original color and two neighbors of the complement color.



62.4052, 65.9203, 85.4388



65.1528, 65.9203, 61.5145



58.7214, 65.9203, 77.7522

Square

The Square scheme is like the rectangle color scheme, but the four colors are evenly spaced on the color wheel.



65.1528, 65.9203, 61.5145



58.9616, 65.9203, 64.9452



60.2224, 65.9203, 83.1196



66.5001, 65.9203, 79.0697

Rectangle

The Rectangle color scheme consists of four colors that form a rectangle on the color wheel.



65.1528, 65.9203, 61.5145



61.3617, 65.9203, 60.1243



60.2224, 65.9203, 83.1196



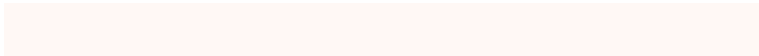
63.9669, 65.9203, 84.8434

Sweetspot

The Sweet Spot groups the original color and five complimentary colors.



65.1546, 65.9232, 61.5159



91.3818, 95.2222, 99.7896



65.0417, 61.3709, 74.8167



19.4156, 20.1934, 21.0038



0.0000, 0.0000, 0.0000



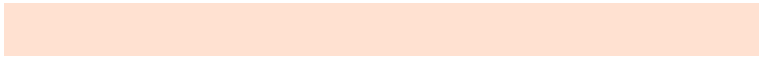
20.3446, 21.4041, 23.3091

Same Dimension

The Same Dimension uses a secret algorithm to generate beautiful new colors.



65.1546, 65.9232, 61.5159



79.7690, 79.8845, 71.6015



69.4957, 74.6055, 62.9629



14.7912, 15.1963, 15.0581



20.2538, 13.0818, 1.4576



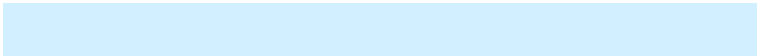
1.5817, 1.1366, 0.1360

Inverse Universe

The Inverse Universe completely reimagines the original color for something new.



62.1189, 67.5902, 84.6356



75.1790, 82.4023, 106.5506



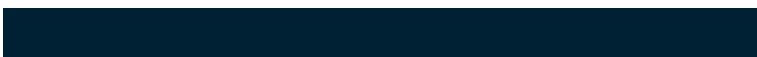
57.9587, 59.2698, 83.2489



14.3569, 15.4351, 18.3669



14.2714, 15.6049, 44.6430



1.1412, 1.3264, 3.3278

Previews

White Background



This preview shows how the XYZ color 65.1528, 65.9203, 61.5145 looks on a white background.

Color Contrast Check

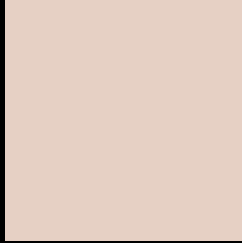
Large Text (above 18pt) WCAG AA × Fail

Any Text WCAG AA × Fail

Large Text (above 18pt) WCAG AAA × Fail

Any Text WCAG AAA × Fail

Black Background



This preview shows how the XYZ color 65.1528, 65.9203, 61.5145 looks on a black background.

Color Contrast Check

Large Text (above 18pt) WCAG AA ✓ Pass

Any Text WCAG AA ✓ Pass

Large Text (above 18pt) WCAG AAA ✓ Pass

Any Text WCAG AAA ✓ Pass

If you want to check with other color combinations, try the [Color Contrast Checker](#).

XYZ 65.1528, 65.9203, 61.5145

Background



This preview shows how black text looks on a background with the XYZ color 65.1528, 65.9203, 61.5145.



This preview shows how white text looks on a background with the XYZ color 65.1528, 65.9203,

61.5145.

Color Blindness Simulation

Color vision deficiency is a very complex topic, and I could not describe the different causes any better than Wikipedia does, so if you want to learn more, you should check out their [article about color blindness](#).

Dichromacy



Original Color

65.1528, 65.9203, 61.5145

Protanopia

62.7007, 65.7258, 62.8077

Deuteranopia

67.5060, 66.0446, 62.0133



Tritanopia

68.1154, 65.6767, 76.7969

Trichromacy



Original Color

65.1528, 65.9203, 61.5145

Protanomaly

63.5561, 65.8124, 62.1766

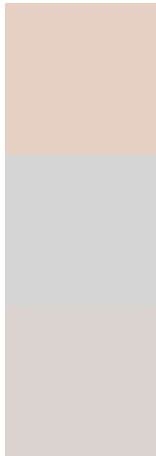
Deuteranomaly

66.7414, 66.0067, 62.0462

Tritanomaly

66.8679, 65.5216, 70.7506

Monochromacy



Original Color

65.1528, 65.9203, 61.5145

Achromatopsia

63.2451, 66.5387, 72.4607

Achromatomaly

63.7702, 66.1536, 68.4394

CSS Examples

Text

The CSS property to change the color of the text to XYZ 65.1528, 65.9203, 61.5145 is called "color". The color property can be set on classes, ids or directly on the HTML element.

This example shows how text in the color `rgb(230, 208, 196)` looks like.

```
.text, #text, p{  
    color:rgb(230, 208, 196)  
}
```

If you want to add a text shadow in that color use the text-shadow property, you can generate a text shadow directly with our [CSS Text Shadow Generator](#).

Here you see how black text with a 4 pixel rgb(230, 208, 196) colored shadow looks like.

```
.shadow{ text-shadow: 4px 4px 2px rgb(230, 208, 196) }
```

Border

The CSS property to change the border of an element to XYZ 65.1528, 65.9203, 61.5145 is called "border". The border property can be set on classes, ids or directly on the HTML element.

This example shows the color as border, it can be applied via the CSS property "border" or "border-color".

```
.border, #border, table{ border:4px solid rgb(230, 208, 196) }
```


If only the border color should be changed use the property `border-color`.

```
.border{ border-color:rgb(230, 208, 196) }
```

If you want to add a box shadow in that color use:

Here you see how a box with a 4 pixel `rgb(230, 208, 196)` colored shadow looks like.

```
.boxshadow{ -moz-box-shadow:4px 4px 4px  
4px rgb(230, 208, 196); -webkit-box-  
shadow:4px 4px 4px 4px rgb(230, 208, 196);  
box-shadow:4px 4px 4px 4px rgb(230, 208,  
196) }
```

Background

The CSS property to change the background color of an element to XYZ 65.1528, 65.9203, 61.5145 is called "background". The background property can be set on classes, ids or directly on the HTML element.

```
.background, #background, body{  
background: rgb(230, 208, 196) }
```

If only the background color should be changed can be used:

```
.background{ background-color: rgb(230,  
208, 196) }
```

This example shows the color as background, it is applied via the CSS property "background".

To optimize and compress your CSS code, you can use our [online CSS compressor and optimizer](#) based on csstidy. If you want to create a linear or radial gradient as background or border, check our [CSS Gradient Generator](#).

Hey! You found this booklet interesting? Support Converting Colors with the new Membership Option!

The pro membership hides all ads, plus gives you double the colors in the color bucket, and more awesome pro features!

[Learn more, Memberships starting at \\$2.50/m!](#)

**Follow me
on Twitter!**

@ConvertingColor