

Converting Colors

XYZ(65.0146, 64.7916, 61.6686)

Have a look what the booklet for
XYZ(65.0146, 64.7916, 61.6686)
contains.

XYZ(65.1881, 64.8497, 61.9048)	3
<i>Conversions</i>	4
<i>Details</i>	6
<i>Harmonies</i>	12
<i>Previews</i>	24
<i>Color Blindness Simulation</i>	28
<i>CSS Examples</i>	31

Color

**XYZ(65.1881, 64.8497,
61.9048)**

Conversions

Conversions Part 1

Format	Color
Hex	E8CDC5
RGB	232, 205, 197
RGB Percent	91%, 80%, 77%
CMY	0.0902, 0.1961, 0.2274
CMYK	0.00, 0.12, 0.15, 0.09
HSL	14°, 43%, 84%
HSV	14°, 15%, 91%
XYZ	65.1881, 64.8497, 61.9048
YIQ	212.1610, 18.6600, 3.2360

Conversions

Conversions Part 2

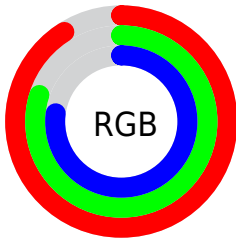
Format	Color
R_{YB}	232, 207, 197
Decimal	15257029
CIE _{Lab}	84.41, 8.16, 7.43
CIE _{LCh}	84, 11.031, 42.331
Yxy	64.8497, 0.3396, 0.3379
Android (android.graphics.Color)	4293447109 (0xFFE8CDC5)
YUV	212.1610, -7.4744, 17.3988
Hunter-Lab	80.5293, 3.5686, 10.7929

Details

The XYZ color **65.1881, 64.8497, 61.9048** is a light color, and the websafe version is hex **FFCCCC**. A complement of this color would be **64.2467, 71.0063, 86.6640**, and the grayscale version is **62.7273, 65.9940, 71.8675**.

A 20% lighter version of the original color is **94.8894, 99.9358, 108.0543**, and **33.9290, 33.3465, 30.6349** is the 20% darker color. If you saturate the color by 10%, you get **58.6936, 55.7921, 47.6185**, and if you desaturate by 10%, it is **72.5849, 75.0559, 78.5118**.

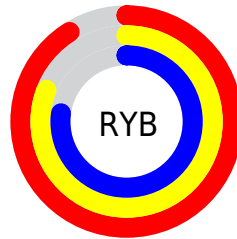
Distribution



Red (91%)

Green (80%)

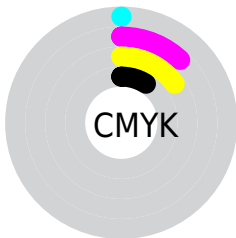
Blue (77%)



Red (91%)

Yellow (81%)

Blue (77%)

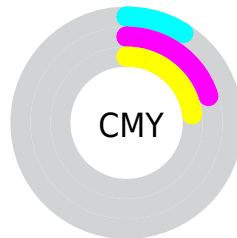


Cyan (0%)

Magenta (12%)

Yellow (15%)

Black (9%)



Cyan (9%)

Magenta (20%)

Yellow (23%)

Brightness & Saturation Gradients

These gradients show how the XYZ color 65.1881, 64.8497, 61.9048 changes by changing the brightness by 10 percent. The first figure shows a shift by +10% for each color and the second figure -10%.

Similar to the brightness gradients but the following saturation gradients show a change of the XYZ color 65.1881, 64.8497, 61.9048 by changing the saturation by 10% instead.

65.1881, 64.8497,
61.9048

65.1881, 64.8497,
61.9048

433.0021,
442.2517, 449.5818

47.8789, 47.3392,
44.5205

111.3844,
111.8337, 109.1582

33.9418, 33.3039,
30.7397

141.0023,
142.0761, 139.8643

23.0116, 22.3594,
20.1439

175.4537,
177.3312, 175.8482

14.7228, 14.1212,
12.3146

215.1041,
217.9834, 217.5283

8.7101, 8.2050,
6.8332

260.3188,
264.4172, 265.3232

4.6082, 4.2264,
3.2811

311.4631,

2.0516, 1.8010,

317.0169, 319.6513

1.2399

368.9024,
376.1669, 380.9314

■ 0.6627, 0.4878,
0.0118

■ 0.0000, 0.0000,
0.0000

■ 65.1881, 64.8497,
61.9048

■ 65.1881, 64.8497,
61.9048

■ 58.6936, 55.7921,
47.6185

■ 72.5849, 75.0559,
78.5118

■ 53.0609, 47.8341,
35.5450

■ 80.9118, 86.4402,
97.5325

■ 48.2546, 40.9360,
25.5742

■ 87.0890, 95.8959,
108.5274

■ 44.2342, 35.0521,
17.5847

■ 40.9560, 30.1337,
11.4426

■ 38.3717, 26.1275,
6.9972

■ 36.4265, 22.9750,
4.0740

■ 35.0563, 20.6101,
2.4594

■ 34.5547, 19.7074,
1.9827

Harmonies

Analogous

The Analogous color harmony consists of three colors that are next to each other on the color wheel.



66.3578, 64.8497, 67.7666



65.1881, 64.8497, 61.9048



63.0793, 64.8497, 58.5138

Triad

The Triadic color harmony groups three colors that are evenly spaced from another and form a triangle on the color wheel.



65.1881, 64.8497, 61.9048



57.2550, 64.8497, 66.5921



62.6497, 64.8497, 84.6352

Complementary

The Complementary color scheme is a pair of colors which are on the opposite of each other on the color wheel.



65.1881, 64.8497, 61.9048



64.2467, 71.0063, 86.6640

Split Complementary

Split-complementary colors differ from the complementary color scheme. The scheme consists of three colors, the original color and two neighbors of the complement color.



60.2182, 64.8497, 84.2686



65.1881, 64.8497, 61.9048



57.1469, 64.8497, 73.5324

Square

The Square scheme is like the rectangle color scheme, but the four colors are evenly spaced on the color wheel.



65.1881, 64.8497, 61.9048



58.5179, 64.8497, 61.0941



58.2186, 64.8497, 80.0959



64.8664, 64.8497, 81.0666

Rectangle

The Rectangle color scheme consists of four colors that form a rectangle on the color wheel.



65.1881, 64.8497, 61.9048



61.4462, 64.8497, 57.9636



58.2186, 64.8497, 80.0959



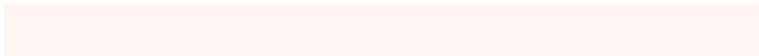
61.8296, 64.8497, 84.9744

Sweetspot

The Sweet Spot groups the original color and five complimentary colors.



65.1899, 64.8526, 61.9062



90.0072, 93.0911, 97.4259



66.7568, 62.4937, 79.3624



19.1186, 19.7239, 20.5210



0.0000, 0.0000, 0.0000



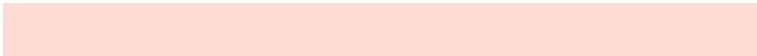
20.3446, 21.4041, 23.3091

Same Dimension

The Same Dimension uses a secret algorithm to generate beautiful new colors.



65.1899, 64.8526, 61.9062



78.2486, 76.8436, 71.0947



69.5009, 73.4746, 63.3432



14.6431, 14.9000, 15.0087



19.2618, 11.0978, 1.1269



1.4927, 0.9587, 0.1064

Inverse Universe

The Inverse Universe completely reimagines the original color for something new.



64.2467, 71.0063, 86.6640



76.8750, 85.7943, 107.1160



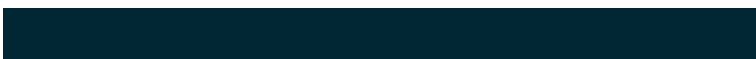
59.8849, 62.2827, 85.2100



14.5133, 15.7480, 18.4191



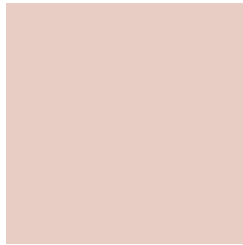
17.1285, 21.3192, 45.5954



1.3342, 1.7123, 3.3921

Previews

White Background



This preview shows how the XYZ color 65.1881, 64.8497, 61.9048 looks on a white background.

Color Contrast Check

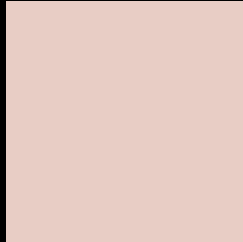
Large Text (above 18pt) WCAG AA × Fail

Any Text WCAG AA × Fail

Large Text (above 18pt) WCAG AAA × Fail

Any Text WCAG AAA × Fail

Black Background



This preview shows how the XYZ color 65.1881, 64.8497, 61.9048 looks on a black background.

Color Contrast Check

Large Text (above 18pt) WCAG AA ✓ Pass

Any Text WCAG AA ✓ Pass

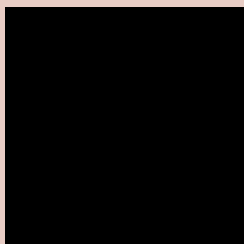
Large Text (above 18pt) WCAG AAA ✓ Pass

Any Text WCAG AAA ✓ Pass

If you want to check with other color combinations, try the [Color Contrast Checker](#).

XYZ 65.1881, 64.8497, 61.9048

Background



This preview shows how black text looks on a background with the XYZ color 65.1881, 64.8497, 61.9048.



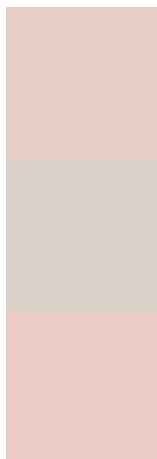
This preview shows how white text looks on a background with the XYZ color 65.1881, 64.8497,

61.9048.

Color Blindness Simulation

Color vision deficiency is a very complex topic, and I could not describe the different causes any better than Wikipedia does, so if you want to learn more, you should check out their [article about color blindness](#).

Dichromacy



Original Color

65.1881, 64.8497, 61.9048

Protanopia

62.0872, 65.0150, 63.9204

Deuteranopia

66.0261, 64.5760, 61.8078



Tritanopia

68.0364, 64.9652, 75.2833

Trichromacy



Original Color

65.1881, 64.8497, 61.9048

Protanomaly

62.9889, 64.7649, 63.2138

Deuteranomaly

65.9319, 64.8791, 61.8713

Tritanomaly

66.9205, 64.8574, 69.9644

Monochromacy



Original Color

65.1881, 64.8497, 61.9048

Achromatopsia

62.5785, 65.8375, 71.6970

Achromatomaly

63.2764, 65.1660, 68.2748

CSS Examples

Text

The CSS property to change the color of the text to XYZ 65.1881, 64.8497, 61.9048 is called "color". The color property can be set on classes, ids or directly on the HTML element.

This example shows how text in the color `rgb(232, 205, 197)` looks like.

```
.text, #text, p{  
    color:rgb(232, 205, 197)  
}
```

If you want to add a text shadow in that color use the text-shadow property, you can generate a text shadow directly with our [CSS Text Shadow Generator](#).

Here you see how black text with a 4 pixel rgb(232, 205, 197) colored shadow looks like.

```
.shadow{ text-shadow: 4px 4px 2px rgb(232, 205, 197) }
```

Border

The CSS property to change the border of an element to XYZ 65.1881, 64.8497, 61.9048 is called "border". The border property can be set on classes, ids or directly on the HTML element.

This example shows the color as border, it can be applied via the CSS property "border" or "border-color".

```
.border, #border, table{ border:4px solid rgb(232, 205, 197) }
```


If only the border color should be changed use the property `border-color`.

```
.border{ border-color:rgb(232, 205, 197) }
```

If you want to add a box shadow in that color use:

Here you see how a box with a 4 pixel `rgb(232, 205, 197)` colored shadow looks like.

```
.boxshadow{ -moz-box-shadow:4px 4px 4px  
4px rgb(232, 205, 197); -webkit-box-  
shadow:4px 4px 4px 4px rgb(232, 205, 197);  
box-shadow:4px 4px 4px 4px rgb(232, 205,  
197) }
```

Background

The CSS property to change the background color of an element to XYZ 65.1881, 64.8497, 61.9048 is called "background". The background property can be set on classes, ids or directly on the HTML element.

```
.background, #background, body{  
background: rgb(232, 205, 197) }
```

If only the background color should be changed can be used:

```
.background{ background-color: rgb(232,  
205, 197) }
```

This example shows the color as background, it is applied via the CSS property "background".

To optimize and compress your CSS code, you can use our [online CSS compressor and optimizer](#) based on csstidy. If you want to create a linear or radial gradient as background or border, check our [CSS Gradient Generator](#).

Hey! You found this booklet interesting? Support Converting Colors with the new Membership Option!

The pro membership hides all ads, plus gives you double the colors in the color bucket, and more awesome pro features!

[Learn more, Memberships starting at \\$2.50/m!](#)

**Follow me
on Twitter!**

@ConvertingColor