

Converting Colors

XYZ(65.0726, 65.2843, 72.1333)

Have a look what the booklet for
XYZ(65.0726, 65.2843, 72.1333)
contains.

XYZ(65.0635, 65.2770, 72.1213)	3
<i>Conversions</i>	4
<i>Details</i>	6
<i>Harmonies</i>	12
<i>Previews</i>	24
<i>Color Blindness Simulation</i>	28
<i>CSS Examples</i>	31

Color

**XYZ(65.0635, 65.2770,
72.1213)**

Conversions

Conversions Part 1

Format	Color
Hex	E0CFD5
RGB	224, 207, 213
RGB Percent	88%, 81%, 84%
CMY	0.1216, 0.1882, 0.1647
CMYK	0.00, 0.08, 0.05, 0.12
HSL	339°, 22%, 85%
HSV	339°, 8%, 88%
XYZ	65.0635, 65.2770, 72.1213
YIQ	212.7670, 8.2060, 5.4700

Conversions

Conversions Part 2

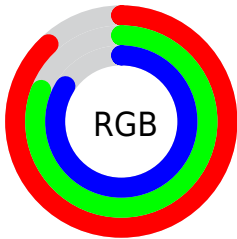
Format	Color
R _Y B	224, 207, 213
Decimal	14733269
CIE Lab	84.63, 6.93, -0.85
CIE LCh	85, 6.977, 353.029
Yxy	65.2770, 0.3214, 0.3224
Android (android.graphics.Color)	4292923349 (0xFFE0CFD5)
YUV	212.7670, 0.1149, 9.8513
Hunter-Lab	80.7942, 2.3561, 3.6304

Details

The XYZ color **65.0635, 65.2770, 72.1213** is a light color, and the websafe version is hex **CCCCCC**. A complement of this color would be **65.0451, 71.6403, 76.7328**, and the grayscale version is **63.0871, 66.3726, 72.2797**.

A 20% lighter version of the original color is **95.0500, 100.0000, 108.9000**, and **33.9250, 33.6861, 37.0618** is the 20% darker color. If you saturate the color by 10%, you get **58.2586, 54.4809, 61.1768**, and if you desaturate by 10%, it is **72.8065, 77.6843, 84.1918**.

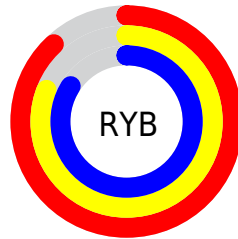
Distribution



Red (88%)

Green (81%)

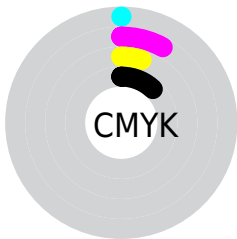
Blue (84%)



Red (88%)

Yellow (81%)

Blue (84%)

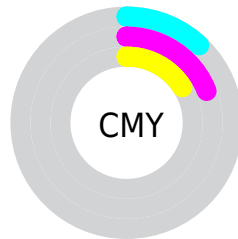


Cyan (0%)

Magenta (8%)

Yellow (5%)

Black (12%)



Cyan (12%)

Magenta (19%)

Yellow (16%)

Brightness & Saturation Gradients

These gradients show how the XYZ color 65.0635, 65.2770, 72.1213 changes by changing the brightness by 10 percent. The first figure shows a shift by +10% for each color and the second figure -10%.

Similar to the brightness gradients but the following saturation gradients show a change of the XYZ color 65.0635, 65.2770, 72.1213 by changing the saturation by 10% instead.

65.0635, 65.2770,
72.1213

65.0635, 65.2770,
72.1213

432.5617,
443.7867, 486.9526

47.7775, 47.6857,
52.7703

111.2063,
112.4480, 123.9383

33.8612, 33.5781,
37.2330

140.7939,
142.7965, 157.2414

22.9494, 22.5697,
25.0907

175.2126,
178.1662, 196.0323

14.6766, 14.2761,
15.9250

214.8279,
218.9416, 240.7295

8.6776, 8.3129,
9.3173

260.0051,
265.5069, 291.7516

4.5869, 4.2958,
4.8491

311.1096,

2.0392, 1.8404,

318.2466, 349.5171

2.1018

368.5067,
377.5451, 414.4446

■ 0.6559, 0.5122,
0.6169

■ 0.0000, 0.0000,
0.0000

■ 65.0635, 65.2770,
72.1213

■ 65.0635, 65.2770,
72.1213

■ 58.2586, 54.4809,
61.1768

■ 72.8065, 77.6843,
84.1918

■ 52.3497, 45.2214,
51.3206

■ 81.5166, 91.7568,
97.4158

■ 47.2998, 37.4304,
42.5192

■ 84.5508, 94.5875,
108.4086

■ 43.0668, 31.0316,
34.7355

■ 39.6051, 25.9414,
27.9302

■ 36.8645, 22.0676,
22.0611

■ 34.7882, 19.3054,
17.0823

■ 33.3102, 17.5322,
12.9433

■ 32.3426, 16.5820,
9.5839

Harmonies

Analogous

The Analogous color harmony consists of three colors that are next to each other on the color wheel.



64.4668, 65.2770, 76.3583



65.0635, 65.2770, 72.1213



64.8403, 65.2770, 67.7735

Triad

The Triadic color harmony groups three colors that are evenly spaced from another and form a triangle on the color wheel.



65.0635, 65.2770, 72.1213



60.8799, 65.2770, 63.4725



60.2605, 65.2770, 78.1489

Complementary

The Complementary color scheme is a pair of colors which are on the opposite of each other on the color wheel.



65.0635, 65.2770, 72.1213



65.0451, 71.6403, 76.7328

Split Complementary

Split-complementary colors differ from the complementary color scheme. The scheme consists of three colors, the original color and two neighbors of the complement color.



59.3289, 65.2770, 74.4831



65.0635, 65.2770, 72.1213



59.6823, 65.2770, 66.0423

Square

The Square scheme is like the rectangle color scheme, but the four colors are evenly spaced on the color wheel.



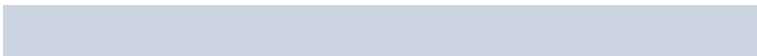
65.0635, 65.2770, 72.1213



62.4079, 65.2770, 62.8993



59.1191, 65.2770, 70.0400



61.6812, 65.2770, 79.9313

Rectangle

The Rectangle color scheme consists of four colors that form a rectangle on the color wheel.



65.0635, 65.2770, 72.1213



64.2584, 65.2770, 65.3834



59.1191, 65.2770, 70.0400



59.8808, 65.2770, 77.0888

Sweetspot

The Sweet Spot groups the original color and five complimentary colors.



65.0654, 65.2798, 72.1227



92.9176, 96.5783, 105.5900



64.6133, 64.8800, 79.6394



19.9105, 20.7076, 22.6354



0.0000, 0.0000, 0.0000



20.3446, 21.4041, 23.3091

Same Dimension

The Same Dimension uses a secret algorithm to generate beautiful new colors.



65.0654, 65.2798, 72.1227



85.8607, 85.3014, 94.4919



64.8711, 66.0869, 68.3718



13.9059, 13.7800, 15.2749



18.7648, 9.5729, 5.4270



1.3422, 0.6801, 0.5947

Inverse Universe

The Inverse Universe completely reimagines the original color for something new.



65.0654, 65.2798, 72.1227



85.8607, 85.3014, 94.4919



65.2393, 70.7499, 80.7395



13.9059, 13.7800, 15.2749



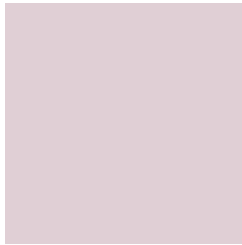
18.7648, 9.5729, 5.4270



1.3422, 0.6801, 0.5947

Previews

White Background



This preview shows how the XYZ color 65.0635, 65.2770, 72.1213 looks on a white background.

Color Contrast Check

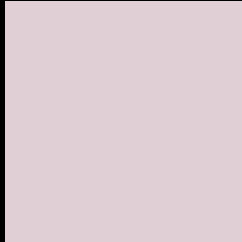
Large Text (above 18pt) WCAG AA × Fail

Any Text WCAG AA × Fail

Large Text (above 18pt) WCAG AAA × Fail

Any Text WCAG AAA × Fail

Black Background



This preview shows how the XYZ color 65.0635, 65.2770, 72.1213 looks on a black background.

Color Contrast Check

Large Text (above 18pt) WCAG AA ✓ Pass

Any Text WCAG AA ✓ Pass

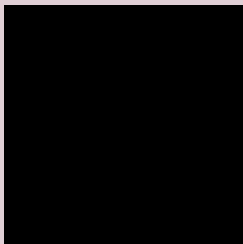
Large Text (above 18pt) WCAG AAA ✓ Pass

Any Text WCAG AAA ✓ Pass

If you want to check with other color combinations, try the [Color Contrast Checker](#).

XYZ 65.0635, 65.2770, 72.1213

Background



This preview shows how black text looks on a background with the XYZ color 65.0635, 65.2770, 72.1213.

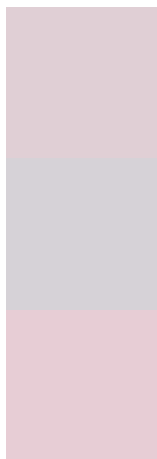


This preview shows how white text looks on a background with the XYZ color 65.0635, 65.2770,

Color Blindness Simulation

Color vision deficiency is a very complex topic, and I could not describe the different causes any better than Wikipedia does, so if you want to learn more, you should check out their [article about color blindness](#).

Dichromacy



Original Color

65.0635, 65.2770, 72.1213

Protanopia

63.0439, 65.2956, 73.5705

Deuteranopia

66.7966, 65.4557, 72.0644



Tritanopia

66.3075, 65.4241, 78.2406

Trichromacy



Original Color

65.0635, 65.2770, 72.1213

Protanomaly

63.8515, 65.3614, 72.8690

Deuteranomaly

66.0765, 65.4407, 72.0995

Tritanomaly

65.9088, 65.2646, 76.1414

Monochromacy



Original Color

65.0635, 65.2770, 72.1213

Achromatopsia

63.2451, 66.5387, 72.4607

Achromatomaly

63.9198, 66.1443, 72.3490

CSS Examples

Text

The CSS property to change the color of the text to XYZ 65.0635, 65.2770, 72.1213 is called "color". The color property can be set on classes, ids or directly on the HTML element.

This example shows how text in the color rgb(224, 207, 213) looks like.

```
.text, #text, p{  
    color:rgb(224, 207, 213)  
}
```

If you want to add a text shadow in that color use the text-shadow property, you can generate a text shadow directly with our [CSS Text Shadow Generator](#).

Here you see how black text with a 4 pixel rgb(224, 207, 213) colored shadow looks like.

```
.shadow{ text-shadow: 4px 4px 2px rgb(224, 207, 213) }
```

Border

The CSS property to change the border of an element to XYZ 65.0635, 65.2770, 72.1213 is called "border". The border property can be set on classes, ids or directly on the HTML element.

This example shows the color as border, it can be applied via the CSS property "border" or "border-color".

```
.border, #border, table{ border:4px solid rgb(224, 207, 213) }
```


If only the border color should be changed use the property `border-color`.

```
.border{ border-color:rgb(224, 207, 213) }
```

If you want to add a box shadow in that color use:

Here you see how a box with a 4 pixel `rgb(224, 207, 213)` colored shadow looks like.

```
.boxshadow{ -moz-box-shadow:4px 4px 4px  
4px rgb(224, 207, 213); -webkit-box-  
shadow:4px 4px 4px 4px rgb(224, 207, 213);  
box-shadow:4px 4px 4px 4px rgb(224, 207,  
213) }
```

Background

The CSS property to change the background color of an element to XYZ 65.0635, 65.2770, 72.1213 is called "background". The background property can be set on classes, ids or directly on the HTML element.

```
.background, #background, body{  
background: rgb(224, 207, 213) }
```

If only the background color should be changed can be used:

```
.background{ background-color: rgb(224,  
207, 213) }
```

This example shows the color as background, it is applied via the CSS property "background".

To optimize and compress your CSS code, you can use our [online CSS compressor and optimizer](#) based on csstidy. If you want to create a linear or radial gradient as background or border, check our [CSS Gradient Generator](#).

Hey! You found this booklet interesting? Support Converting Colors with the new Membership Option!

The pro membership hides all ads, plus gives you double the colors in the color bucket, and more awesome pro features!

[Learn more, Memberships starting at \\$2.50/m!](#)

**Follow me
on Twitter!**

@ConvertingColor