

Converting Colors

XYZ(65.1357, 64.4730, 69.2299)

Have a look what the booklet for
XYZ(65.1357, 64.4730, 69.2299)
contains.

XYZ(65.0964, 64.2832, 69.2985)	3
<i>Conversions</i>	4
<i>Details</i>	6
<i>Harmonies</i>	12
<i>Previews</i>	24
<i>Color Blindness Simulation</i>	28
<i>CSS Examples</i>	31

Color

**XYZ(65.0964, 64.2832,
69.2985)**

Conversions

Conversions Part 1

Format	Color
Hex	E4CCD1
RGB	228, 204, 209
RGB Percent	89%, 80%, 82%
CMY	0.1059, 0.2000, 0.1804
CMYK	0.00, 0.11, 0.08, 0.11
HSL	348°, 31%, 85%
HSV	348°, 11%, 89%
XYZ	65.0964, 64.2832, 69.2985
YIQ	211.7460, 12.6990, 6.6430

Conversions

Conversions Part 2

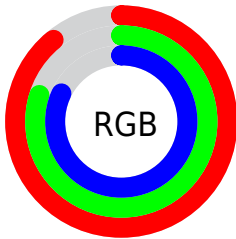
Format	Color
R _Y B	228, 204, 209
Decimal	14994641
CIE Lab	84.11, 9.21, 0.57
CIE LCh	84, 9.230, 3.560
Yxy	64.2832, 0.3276, 0.3236
Android (android.graphics.Color)	4293184721 (0xFFE4CCD1)
YUV	211.7460, -1.3538, 14.2548
Hunter-Lab	80.1768, 4.6166, 4.8782

Details

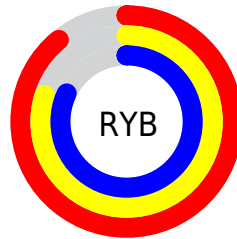
The XYZ color **65.0964, 64.2832, 69.2985** is a light color, and the websafe version is hex **CCCCCC**. A complement of this color would be **65.9670, 73.6535, 80.5555**, and the grayscale version is **62.4150, 65.6654, 71.5097**.

A 20% lighter version of the original color is **95.0500, 100.0000, 108.9000**, and **33.8360, 32.9499, 35.5870** is the 20% darker color. If you saturate the color by 10%, you get **57.9592, 53.3848, 56.5098**, and if you desaturate by 10%, it is **73.2838, 76.8751, 83.6884**.

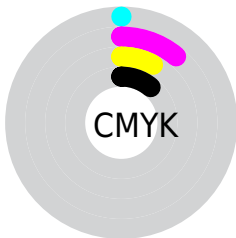
Distribution



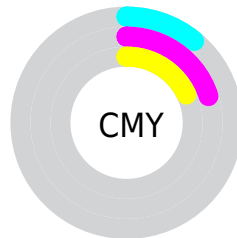
- Red (89%)
- Green (80%)
- Blue (82%)



- Red (89%)
- Yellow (80%)
- Blue (82%)



- Cyan (0%)
- Magenta (11%)
- Yellow (8%)
- Black (11%)



- Cyan (11%)
- Magenta (20%)
- Yellow (18%)

Brightness & Saturation Gradients

These gradients show how the XYZ color 65.0964, 64.2832, 69.2985 changes by changing the brightness by 10 percent. The first figure shows a shift by +10% for each color and the second figure -10%.

Similar to the brightness gradients but the following saturation gradients show a change of the XYZ color 65.0964, 64.2832, 69.2985 by changing the saturation by 10% instead.

65.0964, 64.2832,
69.2985

65.0964, 64.2832,
69.2985

432.6780,
440.2116, 476.8055

47.8042, 46.8801,
50.4816

111.2534,
111.0187, 119.8795

33.8825, 32.9409,
35.4223

140.8489,
141.1199, 152.4807

22.9658, 22.0812,
23.7022

175.2763,
176.2225, 190.5138

14.6888, 13.9165,
14.9027

214.9008,
216.7110, 234.3972

8.6862, 8.0626,
8.6053

260.0879,
262.9698, 284.5495

4.5925, 4.1351,
4.3914

311.2029,

2.0425, 1.7494,

315.3832, 341.3893

1.8424

368.6112,
374.3357, 405.3351

■ 0.6577, 0.4553,
0.4557

■ 0.0000, 0.0000,
0.0000

■ 65.0964, 64.2832,
69.2985

■ 65.0964, 64.2832,
69.2985

■ 57.9592, 53.3848,
56.5098

■ 73.2838, 76.8751,
83.6884

■ 51.8240, 44.0994,
45.2625

■ 82.5563, 91.2197,
99.7284

■ 46.6470, 36.3527,
35.4990

■ 85.8052, 95.2342,
108.4674

■ 42.3789, 30.0610,
27.1563

■ 38.9657, 25.1329,
20.1670

■ 36.3480, 21.4662,
14.4581

■ 34.4581, 18.9446,
9.9493

■ 33.2165, 17.4297,
6.5504

■ 32.5179, 16.7032,
4.2494

Harmonies

Analogous

The Analogous color harmony consists of three colors that are next to each other on the color wheel.



64.6774, 64.2832, 75.1129



65.0964, 64.2832, 69.2985



64.4249, 64.2832, 63.9680

Triad

The Triadic color harmony groups three colors that are evenly spaced from another and form a triangle on the color wheel.



65.0964, 64.2832, 69.2985



58.9574, 64.2832, 61.0477



59.3702, 64.2832, 80.5364

Complementary

The Complementary color scheme is a pair of colors which are on the opposite of each other on the color wheel.



65.0964, 64.2832, 69.2985



65.9670, 73.6535, 80.5555

Split Complementary

Split-complementary colors differ from the complementary color scheme. The scheme consists of three colors, the original color and two neighbors of the complement color.



57.8901, 64.2832, 76.3859



65.0964, 64.2832, 69.2985



57.6555, 64.2832, 65.1121

Square

The Square scheme is like the rectangle color scheme, but the four colors are evenly spaced on the color wheel.



65.0964, 64.2832, 69.2985



60.8561, 64.2832, 59.3743



57.2692, 64.2832, 70.6931



61.3431, 64.2832, 81.8088

Rectangle

The Rectangle color scheme consists of four colors that form a rectangle on the color wheel.



65.0964, 64.2832, 69.2985



63.4577, 64.2832, 61.3435



57.2692, 64.2832, 70.6931



58.8000, 64.2832, 79.4206

Sweetspot

The Sweet Spot groups the original color and five complimentary colors.



65.0982, 64.2860, 69.2999



91.6978, 94.8318, 103.0471



65.9684, 64.4464, 82.3620



19.4399, 20.0097, 21.7285



0.0000, 0.0000, 0.0000



20.3446, 21.4041, 23.3091

Same Dimension

The Same Dimension uses a secret algorithm to generate beautiful new colors.



65.0982, 64.2860, 69.2999



81.4297, 79.0662, 84.9166



66.1407, 67.3454, 66.6432



14.4991, 14.4168, 15.5628



18.8115, 9.6588, 2.6366



1.4235, 0.7271, 0.3705

Inverse Universe

The Inverse Universe completely reimagines the original color for something new.



65.0982, 64.2860, 69.2999



81.4297, 79.0662, 84.9166



64.8170, 70.2595, 83.5448



14.4991, 14.4168, 15.5628



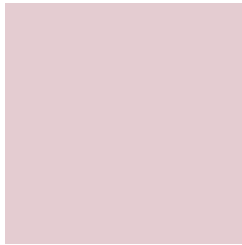
18.8115, 9.6588, 2.6366



1.4235, 0.7271, 0.3705

Previews

White Background



This preview shows how the XYZ color 65.0964, 64.2832, 69.2985 looks on a white background.

Color Contrast Check

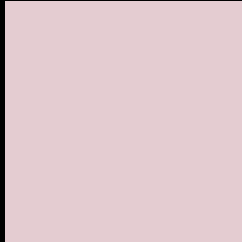
Large Text (above 18pt) WCAG AA × Fail

Any Text WCAG AA × Fail

Large Text (above 18pt) WCAG AAA × Fail

Any Text WCAG AAA × Fail

Black Background



This preview shows how the XYZ color 65.0964, 64.2832, 69.2985 looks on a black background.

Color Contrast Check

Large Text (above 18pt) WCAG AA ✓ Pass

Any Text WCAG AA ✓ Pass

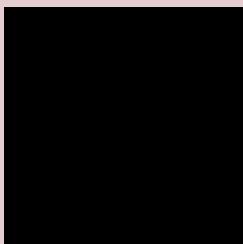
Large Text (above 18pt) WCAG AAA ✓ Pass

Any Text WCAG AAA ✓ Pass

If you want to check with other color combinations, try the [Color Contrast Checker](#).

XYZ 65.0964, 64.2832, 69.2985

Background



This preview shows how black text looks on a background with the XYZ color 65.0964, 64.2832, 69.2985.



This preview shows how white text looks on a background with the XYZ color 65.0964, 64.2832,

69.2985.

Color Blindness Simulation

Color vision deficiency is a very complex topic, and I could not describe the different causes any better than Wikipedia does, so if you want to learn more, you should check out their [article about color blindness](#).

Dichromacy



Original Color

65.0964, 64.2832, 69.2985

Protanopia

62.1247, 64.5005, 71.4629

Deuteranopia

65.4977, 64.1383, 69.2494



Tritanopia

66.3239, 64.4318, 75.2706

Trichromacy



Original Color

65.0964, 64.2832, 69.2985

Protanomaly

62.9841, 64.2342, 70.7068

Deuteranomaly

65.1777, 63.9733, 69.2345

Tritanomaly

65.9348, 64.2762, 73.2214

Monochromacy



Original Color

65.0964, 64.2832, 69.2985

Achromatopsia

62.5785, 65.8375, 71.6970

Achromatomaly

63.4718, 65.2095, 70.8694

CSS Examples

Text

The CSS property to change the color of the text to XYZ 65.0964, 64.2832, 69.2985 is called "color". The color property can be set on classes, ids or directly on the HTML element.

This example shows how text in the color rgb(228, 204, 209) looks like.

```
.text, #text, p{  
    color:rgb(228, 204, 209)  
}
```

If you want to add a text shadow in that color use the text-shadow property, you can generate a text shadow directly with our [CSS Text Shadow Generator](#).

Here you see how black text with a 4 pixel rgb(228, 204, 209) colored shadow looks like.

```
.shadow{ text-shadow: 4px 4px 2px rgb(228, 204, 209) }
```

Border

The CSS property to change the border of an element to XYZ 65.0964, 64.2832, 69.2985 is called "border". The border property can be set on classes, ids or directly on the HTML element.

This example shows the color as border, it can be applied via the CSS property "border" or "border-color".

```
.border, #border, table{ border:4px solid rgb(228, 204, 209) }
```


If only the border color should be changed use the property `border-color`.

```
.border{ border-color:rgb(228, 204, 209) }
```

If you want to add a box shadow in that color use:

Here you see how a box with a 4 pixel `rgb(228, 204, 209)` colored shadow looks like.

```
.boxshadow{ -moz-box-shadow:4px 4px 4px  
4px rgb(228, 204, 209); -webkit-box-  
shadow:4px 4px 4px 4px rgb(228, 204, 209);  
box-shadow:4px 4px 4px 4px rgb(228, 204,  
209) }
```

Background

The CSS property to change the background color of an element to XYZ 65.0964, 64.2832, 69.2985 is called "background". The background property can be set on classes, ids or directly on the HTML element.

```
.background, #background, body{  
background: rgb(228, 204, 209) }
```

If only the background color should be changed can be used:

```
.background{ background-color: rgb(228,  
204, 209) }
```

This example shows the color as background, it is applied via the CSS property "background".

To optimize and compress your CSS code, you can use our [online CSS compressor and optimizer](#) based on csstidy. If you want to create a linear or radial gradient as background or border, check our [CSS Gradient Generator](#).

Hey! You found this booklet interesting? Support Converting Colors with the new Membership Option!

The pro membership hides all ads, plus gives you double the colors in the color bucket, and more awesome pro features!

[Learn more, Memberships starting at \\$2.50/m!](#)

**Follow me
on Twitter!**

@ConvertingColor