

Converting Colors

XYZ(65.1976, 65.1266, 64.4718)

Have a look what the booklet for
XYZ(65.1976, 65.1266, 64.4718)
contains.

XYZ(65.2470, 65.1827, 64.4010)	3
<i>Conversions</i>	4
<i>Details</i>	6
<i>Harmonies</i>	12
<i>Previews</i>	24
<i>Color Blindness Simulation</i>	28
<i>CSS Examples</i>	31

Color

**XYZ(65.2470, 65.1827,
64.4010)**

Conversions

Conversions Part 1

Format	Color
Hex	E6CEC9
RGB	230, 206, 201
RGB Percent	90%, 81%, 79%
CMY	0.0980, 0.1921, 0.2118
CMYK	0.00, 0.10, 0.13, 0.10
HSL	10°, 37%, 85%
HSV	10°, 13%, 90%
XYZ	65.2470, 65.1827, 64.4010
YIQ	212.6060, 15.9090, 3.5330

Conversions

Conversions Part 2

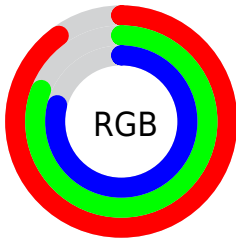
Format	Color
R _Y B	230, 207, 201
Decimal	15126217
CIE Lab	84.58, 7.55, 5.53
CIE LCh	85, 9.355, 36.211
Yxy	65.1827, 0.3349, 0.3346
Android (android.graphics.Color)	4293316297 (0xFFE6CEC9)
YUV	212.6060, -5.7218, 15.2545
Hunter-Lab	80.7358, 2.9679, 9.2209

Details

The XYZ color **65.2470, 65.1827, 64.4010** is a light color, and the websafe version is hex **CCCCCC**. A complement of this color would be **65.2950, 71.9794, 85.3153**, and the grayscale version is **63.0138, 66.2954, 72.1957**.

A 20% lighter version of the original color is **95.0500, 100.0000, 108.9000**, and **33.9503, 33.5617, 32.2925** is the 20% darker color. If you saturate the color by 10%, you get **58.4343, 55.5674, 49.7660**, and if you desaturate by 10%, it is **73.0232, 76.0753, 81.3574**.

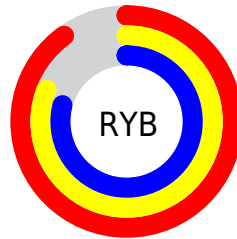
Distribution



Red (90%)

Green (81%)

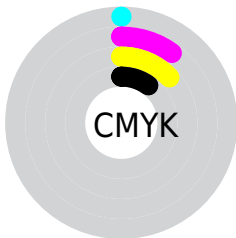
Blue (79%)



Red (90%)

Yellow (81%)

Blue (79%)

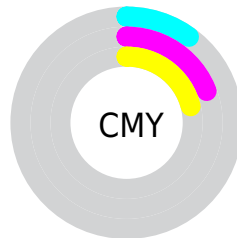


Cyan (0%)

Magenta (10%)

Yellow (13%)

Black (10%)



Cyan (10%)

Magenta (19%)

Yellow (21%)

Brightness & Saturation Gradients

These gradients show how the XYZ color 65.2470, 65.1827, 64.4010 changes by changing the brightness by 10 percent. The first figure shows a shift by +10% for each color and the second figure -10%.

Similar to the brightness gradients but the following saturation gradients show a change of the XYZ color 65.2470, 65.1827, 64.4010 by changing the saturation by 10% instead.

65.2470, 65.1827,
64.4010

65.2470, 65.1827,
64.4010

433.2102,
443.4482, 458.8834

47.9268, 47.6092,
46.5273

111.4686,
112.3125, 112.7933

33.9800, 33.5175,
32.3104

141.1008,
142.6376, 144.1489

23.0410, 22.5232,
21.3319

175.5677,
177.9820, 180.8355

14.7447, 14.2418,
13.1733

215.2346,
218.7302, 223.2718

8.7255, 8.2891,
7.4158

260.4670,
265.2666, 271.8762

4.6183, 4.2805,
3.6411

311.6302,

2.0575, 1.8317,

317.9754, 327.0672

1.4306

369.0895,
377.2411, 389.2634

■ 0.6660, 0.5068,
0.1654

■ 0.0000, 0.0000,
0.0000

■ 65.2470, 65.1827,
64.4010

■ 65.2470, 65.1827,
64.4010

■ 58.4343, 55.5674,
49.7660

■ 73.0232, 76.0753,
81.3574

■ 52.5421, 47.1742,
37.3472

■ 81.7932, 88.2808,
100.7260

■ 47.5319, 39.9563,
27.0374

■ 86.4433, 95.5631,
108.4972

■ 43.3606, 33.8610,
18.7188

■ 39.9812, 28.8313,
12.2621

■ 37.3421, 24.8050,
7.5225

■ 35.3850, 21.7136,
4.3337

■ 34.0424, 19.4794,
2.4960

■ 33.3817, 18.3199,
1.7767

Harmonies

Analogous

The Analogous color harmony consists of three colors that are next to each other on the color wheel.



66.0276, 65.1827, 69.7374



65.2470, 65.1827, 64.4010



63.5862, 65.1827, 60.9725

Triad

The Triadic color harmony groups three colors that are evenly spaced from another and form a triangle on the color wheel.



65.2470, 65.1827, 64.4010



58.3561, 65.1827, 66.4396



62.3891, 65.1827, 83.0155

Complementary

The Complementary color scheme is a pair of colors which are on the opposite of each other on the color wheel.



65.2470, 65.1827, 64.4010



65.2950, 71.9794, 85.3153

Split Complementary

Split-complementary colors differ from the complementary color scheme. The scheme consists of three colors, the original color and two neighbors of the complement color.



60.3504, 65.1827, 82.0110



65.2470, 65.1827, 64.4010



58.0518, 65.1827, 72.2229

Square

The Square scheme is like the rectangle color scheme, but the four colors are evenly spaced on the color wheel.



65.2470, 65.1827, 64.4010



59.6149, 65.1827, 62.1024



58.7741, 65.1827, 77.9773



64.3540, 65.1827, 80.6502

Rectangle

The Rectangle color scheme consists of four colors that form a rectangle on the color wheel.



65.2470, 65.1827, 64.4010



62.2196, 65.1827, 60.1172



58.7741, 65.1827, 77.9773



61.6895, 65.1827, 83.0625

Sweetspot

The Sweet Spot groups the original color and five complimentary colors.



65.2488, 65.1856, 64.4024



90.8173, 94.0932, 99.6014



67.1338, 64.0425, 80.1771



19.2731, 19.9085, 20.9563



0.0000, 0.0000, 0.0000



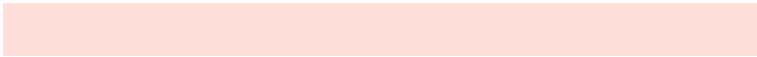
20.3446, 21.4041, 23.3091

Same Dimension

The Same Dimension uses a secret algorithm to generate beautiful new colors.



65.2488, 65.1856, 64.4024



80.2133, 79.2197, 76.5385



68.8571, 72.4022, 65.6052



14.5770, 14.7679, 14.9867



18.9599, 10.4939, 1.0262



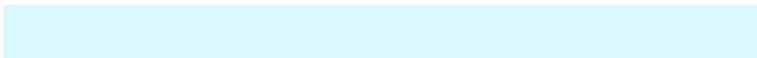
1.4608, 0.8949, 0.0957

Inverse Universe

The Inverse Universe completely reimagines the original color for something new.



65.2950, 71.9794, 85.3153



80.2813, 89.3141, 107.6158



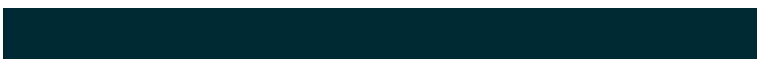
61.5827, 64.5546, 84.0779



14.5847, 15.8909, 18.4429



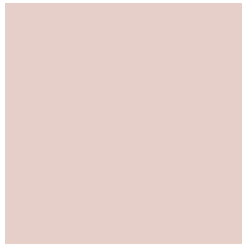
18.6287, 24.3194, 46.0955



1.4326, 1.9091, 3.4250

Previews

White Background



This preview shows how the XYZ color 65.2470, 65.1827, 64.4010 looks on a white background.

Color Contrast Check

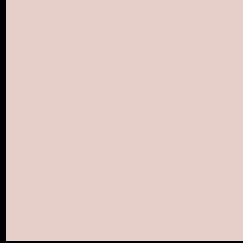
Large Text (above 18pt) WCAG AA × Fail

Any Text WCAG AA × Fail

Large Text (above 18pt) WCAG AAA × Fail

Any Text WCAG AAA × Fail

Black Background



This preview shows how the XYZ color 65.2470, 65.1827, 64.4010 looks on a black background.

Color Contrast Check

Large Text (above 18pt) WCAG AA ✓ Pass

Any Text WCAG AA ✓ Pass

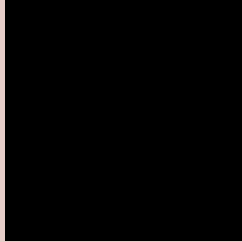
Large Text (above 18pt) WCAG AAA ✓ Pass

Any Text WCAG AAA ✓ Pass

If you want to check with other color combinations, try the [Color Contrast Checker](#).

XYZ 65.2470, 65.1827, 64.4010

Background



This preview shows how black text looks on a background with the XYZ color 65.2470, 65.1827, 64.4010.

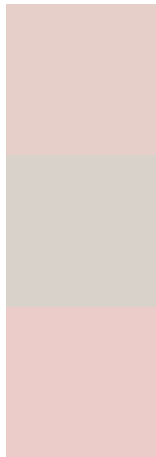


This preview shows how white text looks on a background with the XYZ color 65.2470, 65.1827, 64.4010.

Color Blindness Simulation

Color vision deficiency is a very complex topic, and I could not describe the different causes any better than Wikipedia does, so if you want to learn more, you should check out their [article about color blindness](#).

Dichromacy



Original Color

65.2470, 65.1827, 64.4010

Protanopia

62.4414, 65.1567, 65.7854

Deuteranopia

66.3964, 65.0649, 64.3177



Tritanopia

67.4208, 64.9822, 76.0072

Trichromacy



Original Color

65.2470, 65.1827, 64.4010

Protanomaly

63.5853, 65.3948, 65.1483

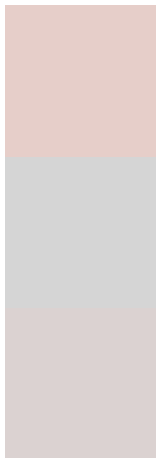
Deuteranomaly

65.9782, 65.2033, 64.3664

Tritanomaly

66.4315, 64.9281, 71.3184

Monochromacy



Original Color

65.2470, 65.1827, 64.4010

Achromatopsia

63.2451, 66.5387, 72.4607

Achromatomaly

63.7686, 65.7567, 69.6529

CSS Examples

Text

The CSS property to change the color of the text to XYZ 65.2470, 65.1827, 64.4010 is called "color". The color property can be set on classes, ids or directly on the HTML element.

This example shows how text in the color `rgb(230, 206, 201)` looks like.

```
.text, #text, p{  
    color:rgb(230, 206, 201)  
}
```

If you want to add a text shadow in that color use the text-shadow property, you can generate a text shadow directly with our [CSS Text Shadow Generator](#).

Here you see how black text with a 4 pixel rgb(230, 206, 201) colored shadow looks like.

```
.shadow{ text-shadow: 4px 4px 2px rgb(230, 206, 201) }
```

Border

The CSS property to change the border of an element to XYZ 65.2470, 65.1827, 64.4010 is called "border". The border property can be set on classes, ids or directly on the HTML element.

This example shows the color as border, it can be applied via the CSS property "border" or "border-color".

```
.border, #border, table{ border:4px solid rgb(230, 206, 201) }
```


If only the border color should be changed use the property border-color.

```
.border{ border-color:rgb(230, 206, 201) }
```

If you want to add a box shadow in that color use:

Here you see how a box with a 4 pixel rgb(230, 206, 201) colored shadow looks like.

```
.boxshadow{ -moz-box-shadow:4px 4px 4px  
4px rgb(230, 206, 201); -webkit-box-  
shadow:4px 4px 4px 4px rgb(230, 206, 201);  
box-shadow:4px 4px 4px 4px rgb(230, 206,  
201) }
```

Background

The CSS property to change the background color of an element to XYZ 65.2470, 65.1827, 64.4010 is called "background". The background property can be set on classes, ids or directly on the HTML element.

```
.background, #background, body{  
background: rgb(230, 206, 201) }
```

If only the background color should be changed can be used:

```
.background{ background-color: rgb(230,  
206, 201) }
```

This example shows the color as background, it is applied via the CSS property "background".

To optimize and compress your CSS code, you can use our [online CSS compressor and optimizer](#) based on csstidy. If you want to create a linear or radial gradient as background or border, check our [CSS Gradient Generator](#).

Hey! You found this booklet interesting? Support Converting Colors with the new Membership Option!

The pro membership hides all ads, plus gives you double the colors in the color bucket, and more awesome pro features!

[Learn more, Memberships starting at \\$2.50/m!](#)

**Follow me
on Twitter!**

@ConvertingColor