

Converting Colors

XYZ(65.2270, 63.8797, 58.7614)

Have a look what the booklet for
XYZ(65.2270, 63.8797, 58.7614)
contains.

XYZ(65.2270, 63.8797, 58.7614)	3
<i>Conversions</i>	4
<i>Details</i>	6
<i>Harmonies</i>	12
<i>Previews</i>	24
<i>Color Blindness Simulation</i>	28
<i>CSS Examples</i>	31

Color

**XYZ(65.2270, 63.8797,
58.7614)**

Conversions

Conversions Part 1

Format	Color
Hex	ECCAC0
RGB	236, 202, 192
RGB Percent	93%, 79%, 75%
CMY	0.0745, 0.2078, 0.2471
CMYK	0.00, 0.14, 0.19, 0.07
HSL	14°, 54%, 84%
HSV	14°, 19%, 93%
XYZ	65.2270, 63.8797, 58.7614
YIQ	211.0260, 23.4740, 4.0980

Conversions

Conversions Part 2

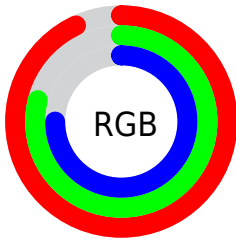
Format	Color
R _Y B	236, 205, 192
Decimal	15518400
CIE Lab	83.90, 10.41, 9.41
CIE LCh	84, 14.037, 42.121
Yxy	63.8797, 0.3472, 0.3400
Android (android.graphics.Color)	4293708480 (0xFFECCAC0)
YUV	211.0260, -9.3798, 21.9022
Hunter-Lab	79.9248, 5.8064, 12.3568

Details

The XYZ color **65.2270, 63.8797, 58.7614** is a light color, and the websafe version is hex **FFCCCC**. A complement of this color would be **64.0744, 71.6535, 89.8107**, and the grayscale version is **61.9846, 65.2127, 71.0166**.

A 20% lighter version of the original color is **93.9433, 99.5573, 103.0721**, and **34.0725, 32.7472, 28.9511** is the 20% darker color. If you saturate the color by 10%, you get **58.7907, 54.8613, 44.7329**, and if you desaturate by 10%, it is **72.5916, 74.0826, 75.1694**.

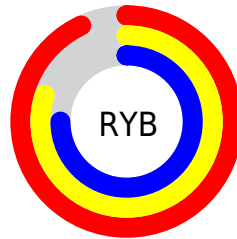
Distribution



Red (93%)

Green (79%)

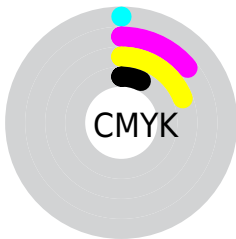
Blue (75%)



Red (93%)

Yellow (80%)

Blue (75%)

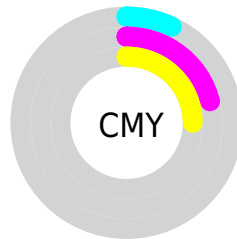


Cyan (0%)

Magenta (14%)

Yellow (19%)

Black (7%)



Cyan (7%)


Magenta (21%)


Yellow (25%)

Brightness & Saturation Gradients


These gradients show how the XYZ color 65.2270, 63.8797, 58.7614 changes by changing the brightness by 10 percent. The first figure shows a shift by +10% for each color and the second figure -10%.


Similar to the brightness gradients but the following saturation gradients show a change of the XYZ color 65.2270, 63.8797, 58.7614 by changing the saturation by 10% instead.

 65.2270, 63.8797,
58.7614

 65.2270, 63.8797,
58.7614


433.1396,
438.7551, 437.6944

 47.9106, 46.5532,
42.0023

 111.4400,
110.4377, 104.5565

 33.9670, 32.6826,
28.7775


141.0674,
140.4380, 134.4296

 23.0310, 21.8834,
18.6685

175.5290,
175.4317, 169.5112

 14.7372, 13.7713,
11.2566

215.1903,
215.8032, 210.2197

 8.7203, 7.9617,
6.1234

260.4167,
261.9369, 256.9738

 4.6148, 4.0705,
2.8502

311.5734,

 2.0555, 1.7131,

314.2172, 310.1919

1.0187

369.0260,
373.0284, 370.2925

■ 0.6649, 0.4321,
0.0000

■ 0.0000, 0.0000,
0.0000

■ 65.2270, 63.8797,
58.7614

■ 65.2270, 63.8797,
58.7614

■ 58.7907, 54.8613,
44.7329

■ 72.5916, 74.0826,
75.1694

■ 53.2401, 46.9759,
32.9691

■ 80.9147, 85.5022,
94.0566

■ 48.5368, 40.1804,
23.3514

■ 88.4022, 96.5730,
108.5889

■ 44.6375, 34.4262,
15.7491

■ 41.4949, 29.6605,
10.0168

■ 39.0561, 25.8257,
5.9896

■ 37.2612, 22.8580,
3.4730

■ 36.0304, 20.6813,
2.1848

■ 35.8957, 20.4398,
2.0534

Harmonies

Analogous

The Analogous color harmony consists of three colors that are next to each other on the color wheel.



66.7077, 63.8797, 66.0444



65.2270, 63.8797, 58.7614



62.5569, 63.8797, 54.5937

Triad

The Triadic color harmony groups three colors that are evenly spaced from another and form a triangle on the color wheel.



65.2270, 63.8797, 58.7614



55.2386, 63.8797, 64.4633



61.9710, 63.8797, 87.5390

Complementary

The Complementary color scheme is a pair of colors which are on the opposite of each other on the color wheel.



65.2270, 63.8797, 58.7614



64.0744, 71.6535, 89.8107

Split Complementary

Split-complementary colors differ from the complementary color scheme. The scheme consists of three colors, the original color and two neighbors of the complement color.



58.9111, 63.8797, 87.0247



65.2270, 63.8797, 58.7614



55.0938, 63.8797, 73.1861

Square

The Square scheme is like the rectangle color scheme, but the four colors are evenly spaced on the color wheel.



65.2270, 63.8797, 58.7614



56.8200, 63.8797, 57.6886



56.4174, 63.8797, 81.5935



64.7856, 63.8797, 82.9444

Rectangle

The Rectangle color scheme consists of four colors that form a rectangle on the color wheel.



65.2270, 63.8797, 58.7614



60.4963, 63.8797, 53.9078



56.4174, 63.8797, 81.5935



60.9358, 63.8797, 87.9681

Sweetspot

The Sweet Spot groups the original color and five complimentary colors.



65.2287, 63.8826, 58.7627



89.0278, 91.7417, 95.2203



67.2339, 61.0496, 80.5284



18.9207, 19.4510, 20.0764



0.0000, 0.0000, 0.0000



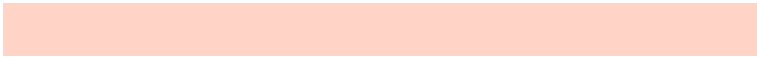
20.3446, 21.4041, 23.3091

Same Dimension

The Same Dimension uses a secret algorithm to generate beautiful new colors.



65.2287, 63.8826, 58.7627



74.9947, 72.2939, 63.9734



70.6375, 74.7000, 60.5656



15.3433, 15.6096, 15.7230



19.8665, 11.4272, 1.1586



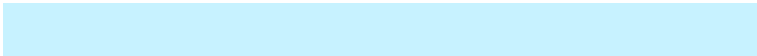
1.6309, 1.0391, 0.1146

Inverse Universe

The Inverse Universe completely reimagines the original color for something new.



64.0744, 71.6535, 89.8107



73.4016, 82.9982, 106.7593



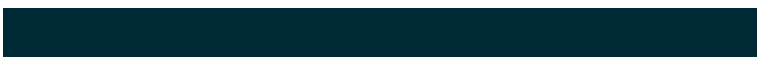
58.5833, 60.6714, 87.9803



15.2104, 16.5072, 19.3068



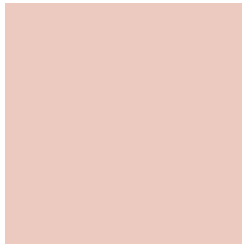
17.7067, 22.0605, 47.0678



1.4613, 1.8740, 3.7196

Previews

White Background



This preview shows how the XYZ color 65.2270, 63.8797, 58.7614 looks on a white background.

Color Contrast Check

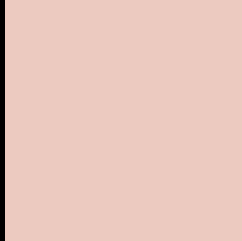
Large Text (above 18pt) WCAG AA × Fail

Any Text WCAG AA × Fail

Large Text (above 18pt) WCAG AAA × Fail

Any Text WCAG AAA × Fail

Black Background



This preview shows how the XYZ color 65.2270, 63.8797, 58.7614 looks on a black background.

Color Contrast Check

Large Text (above 18pt) WCAG AA ✓ Pass

Any Text WCAG AA ✓ Pass

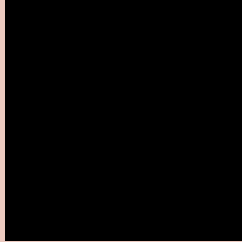
Large Text (above 18pt) WCAG AAA ✓ Pass

Any Text WCAG AAA ✓ Pass

If you want to check with other color combinations, try the [Color Contrast Checker](#).

XYZ 65.2270, 63.8797, 58.7614

Background



This preview shows how black text looks on a background with the XYZ color 65.2270, 63.8797, 58.7614.



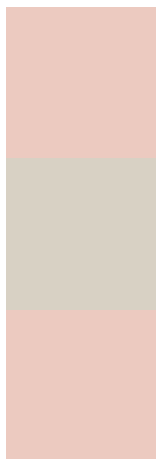
This preview shows how white text looks on a background with the XYZ color 65.2270, 63.8797,

58.7614.

Color Blindness Simulation

Color vision deficiency is a very complex topic, and I could not describe the different causes any better than Wikipedia does, so if you want to learn more, you should check out their [article about color blindness](#).

Dichromacy



Original Color

65.2270, 63.8797, 58.7614

Protanopia

61.0832, 64.1854, 61.3941

Deuteranopia

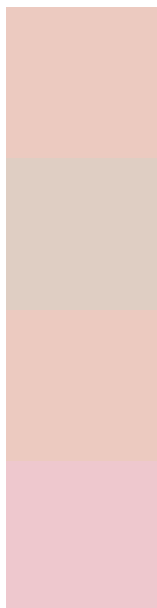
65.2270, 63.8797, 58.7614



Tritanopia

68.1576, 64.0526, 72.3894

Trichromacy



Original Color

65.2270, 63.8797, 58.7614

Protanomaly

62.3531, 63.7707, 60.6524

Deuteranomaly

65.2270, 63.8797, 58.7614

Tritanomaly

67.0548, 63.9419, 67.2004

Monochromacy



Original Color

65.2270, 63.8797, 58.7614

Achromatopsia

61.9161, 65.1406, 70.9381

Achromatomaly

62.9702, 64.6870, 66.2937

CSS Examples

Text

The CSS property to change the color of the text to XYZ 65.2270, 63.8797, 58.7614 is called "color". The color property can be set on classes, ids or directly on the HTML element.

This example shows how text in the color rgb(236, 202, 192) looks like.

```
.text, #text, p{  
    color:rgb(236, 202, 192)  
}
```

If you want to add a text shadow in that color use the text-shadow property, you can generate a text shadow directly with our [CSS Text Shadow Generator](#).

Here you see how black text with a 4 pixel rgb(236, 202, 192) colored shadow looks like.

```
.shadow{ text-shadow: 4px 4px 2px rgb(236, 202, 192) }
```

Border

The CSS property to change the border of an element to XYZ 65.2270, 63.8797, 58.7614 is called "border". The border property can be set on classes, ids or directly on the HTML element.

This example shows the color as border, it can be applied via the CSS property "border" or "border-color".

```
.border, #border, table{ border:4px solid rgb(236, 202, 192) }
```


If only the border color should be changed use the property `border-color`.

```
.border{ border-color:rgb(236, 202, 192) }
```

If you want to add a box shadow in that color use:

Here you see how a box with a 4 pixel `rgb(236, 202, 192)` colored shadow looks like.

```
.boxshadow{ -moz-box-shadow:4px 4px 4px  
4px rgb(236, 202, 192); -webkit-box-  
shadow:4px 4px 4px 4px rgb(236, 202, 192);  
box-shadow:4px 4px 4px 4px rgb(236, 202,  
192) }
```

Background

The CSS property to change the background color of an element to XYZ 65.2270, 63.8797, 58.7614 is called "background". The background property can be set on classes, ids or directly on the HTML element.

```
.background, #background, body{  
background: rgb(236, 202, 192) }
```

If only the background color should be changed can be used:

```
.background{ background-color: rgb(236,  
202, 192) }
```

This example shows the color as background, it is applied via the CSS property "background".

To optimize and compress your CSS code, you can use our [online CSS compressor and optimizer](#) based on csstidy. If you want to create a linear or radial gradient as background or border, check our [CSS Gradient Generator](#).

Hey! You found this booklet interesting? Support Converting Colors with the new Membership Option!

The pro membership hides all ads, plus gives you double the colors in the color bucket, and more awesome pro features!

[Learn more, Memberships starting at \\$2.50/m!](#)

**Follow me
on Twitter!**

@ConvertingColor