

Converting Colors

XYZ(65.2809, 66.0572, 63.6547)

Have a look what the booklet for
XYZ(65.2809, 66.0572, 63.6547)
contains.

XYZ(65.2943, 65.9399, 63.9299)	3
<i>Conversions</i>	4
<i>Details</i>	6
<i>Harmonies</i>	12
<i>Previews</i>	24
<i>Color Blindness Simulation</i>	28
<i>CSS Examples</i>	31

Color

**XYZ(65.2943, 65.9399,
63.9299)**

Conversions

Conversions Part 1

Format	Color
Hex	E5D0C8
RGB	229, 208, 200
RGB Percent	90%, 82%, 78%
CMY	0.1020, 0.1843, 0.2157
CMYK	0.00, 0.09, 0.13, 0.10
HSL	17°, 36%, 84%
HSV	17°, 13%, 90%
XYZ	65.2943, 65.9399, 63.9299
YIQ	213.3670, 15.0840, 1.9640

Conversions

Conversions Part 2

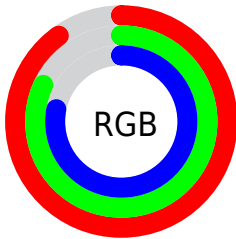
Format	Color
R _Y B	229, 211, 200
Decimal	15061192
CIE Lab	84.97, 5.98, 6.61
CIE LCh	85, 8.912, 47.835
Yxy	65.9399, 0.3346, 0.3379
Android (android.graphics.Color)	4293251272 (0xFFE5D0C8)
YUV	213.3670, -6.5899, 13.7101
Hunter-Lab	81.2034, 1.4230, 10.1645

Details

The XYZ color **65.2943, 65.9399, 63.9299** is a light color, and the websafe version is hex **CCCCCC**. A complement of this color would be **63.8184, 69.6480, 84.2092**, and the grayscale version is **63.5287, 66.8372, 72.7857**.

A 20% lighter version of the original color is **95.0500, 100.0000, 108.9000**, and **33.9775, 34.0708, 31.9796** is the 20% darker color. If you saturate the color by 10%, you get **58.9832, 57.2842, 49.5962**, and if you desaturate by 10%, it is **72.4326, 75.6069, 80.5185**.

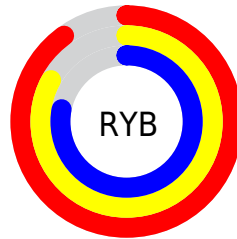
Distribution



Red (90%)

Green (82%)

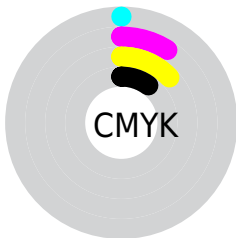
Blue (78%)



Red (90%)

Yellow (83%)

Blue (78%)

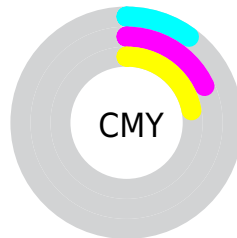


Cyan (0%)

Magenta (9%)

Yellow (13%)

Black (10%)



Cyan (10%)

Magenta (18%)

Yellow (22%)

Brightness & Saturation Gradients

These gradients show how the XYZ color 65.2943, 65.9399, 63.9299 changes by changing the brightness by 10 percent. The first figure shows a shift by +10% for each color and the second figure -10%.

Similar to the brightness gradients but the following saturation gradients show a change of the XYZ color 65.2943, 65.9399, 63.9299 by changing the saturation by 10% instead.

65.2943, 65.9399,
63.9299

65.2943, 65.9399,
63.9299

433.3773,
446.1619, 457.1370

47.9653, 48.2236,
46.1481

111.5362,
113.4001, 112.1085

34.0106, 34.0040,
32.0132

141.1799,
143.9127, 143.3423

23.0647, 22.8967,
21.1067

175.6592,
179.4597, 179.8972

14.7622, 14.5172,
13.0100

215.3394,
220.4252, 222.1918

8.7379, 8.4813,
7.3046

260.5860,
267.1939, 270.6445

4.6264, 4.4044,
3.5720

311.7643,

2.0622, 1.9023,

320.1499, 325.6739

1.3936

369.2396,
379.6778, 387.6985

■ 0.6686, 0.5497,
0.1367

■ 0.0000, 0.0000,
0.0000

■ 65.2943, 65.9399,
63.9299

■ 65.2943, 65.9399,
63.9299

■ 58.9832, 57.2842,
49.5962

■ 72.4326, 75.6069,
80.5185

■ 53.4630, 49.5982,
37.4155

■ 80.4215, 86.3079,
99.4497

■ 48.7030, 42.8500,
27.2839

■ 86.1234, 95.3982,
108.4822

■ 44.6681, 37.0026,
19.0875

■ 41.3204, 32.0166,
12.7011

■ 38.6179, 27.8495,
7.9845

■ 36.5140, 24.4548,
4.7767

■ 34.9542, 21.7804,
2.8839

■ 34.1023, 20.2360,
2.1085

Harmonies

Analogous

The Analogous color harmony consists of three colors that are next to each other on the color wheel.



66.4112, 65.9399, 68.4726



65.2943, 65.9399, 63.9299



63.4888, 65.9399, 61.5480

Triad

The Triadic color harmony groups three colors that are evenly spaced from another and form a triangle on the color wheel.



65.2943, 65.9399, 63.9299



58.9847, 65.9399, 69.4985



63.8606, 65.9399, 82.8148

Complementary

The Complementary color scheme is a pair of colors which are on the opposite of each other on the color wheel.



65.2943, 65.9399, 63.9299



63.8184, 69.6480, 84.2092

Split Complementary

Split-complementary colors differ from the complementary color scheme. The scheme consists of three colors, the original color and two neighbors of the complement color.



61.8660, 65.9399, 83.1257



65.2943, 65.9399, 63.9299



59.0795, 65.9399, 75.2280

Square

The Square scheme is like the rectangle color scheme, but the four colors are evenly spaced on the color wheel.



65.2943, 65.9399, 63.9299



59.8630, 65.9399, 64.6464



60.1246, 65.9399, 80.2851



65.5715, 65.9399, 79.4571

Rectangle

The Rectangle color scheme consists of four colors that form a rectangle on the color wheel.



65.2943, 65.9399, 63.9299



62.1505, 65.9399, 61.4175



60.1246, 65.9399, 80.2851



63.2002, 65.9399, 83.2853

Sweetspot

The Sweet Spot groups the original color and five complimentary colors.



65.2961, 65.9428, 63.9313



91.1401, 94.7388, 99.7090



66.0549, 63.2022, 77.3115



19.3546, 20.0713, 20.9834



0.0000, 0.0000, 0.0000



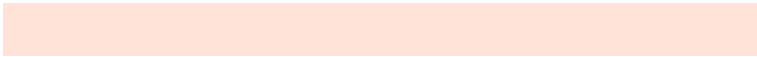
20.3446, 21.4041, 23.3091

Same Dimension

The Same Dimension uses a secret algorithm to generate beautiful new colors.



65.2961, 65.9428, 63.9313



81.2851, 81.3632, 76.8958



68.9225, 73.1955, 65.1401



14.6991, 15.0122, 15.0274



19.5846, 11.7433, 1.2345



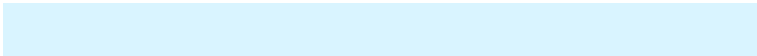
1.5233, 1.0199, 0.1166

Inverse Universe

The Inverse Universe completely reimagines the original color for something new.



63.8184, 69.6480, 84.2092



79.0751, 86.9016, 107.2137



60.2195, 62.4501, 83.0095



14.4535, 15.6284, 18.3991



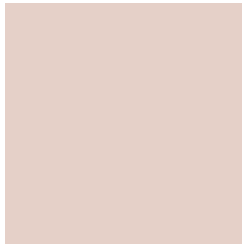
15.9671, 18.9964, 45.2083



1.2567, 1.5574, 3.3663

Previews

White Background



This preview shows how the XYZ color 65.2943, 65.9399, 63.9299 looks on a white background.

Color Contrast Check

Large Text (above 18pt) WCAG AA × Fail

Any Text WCAG AA × Fail

Large Text (above 18pt) WCAG AAA × Fail

Any Text WCAG AAA × Fail

Black Background



This preview shows how the XYZ color 65.2943, 65.9399, 63.9299 looks on a black background.

Color Contrast Check

Large Text (above 18pt) WCAG AA ✓ Pass

Any Text WCAG AA ✓ Pass

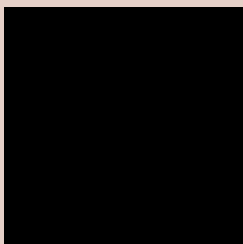
Large Text (above 18pt) WCAG AAA ✓ Pass

Any Text WCAG AAA ✓ Pass

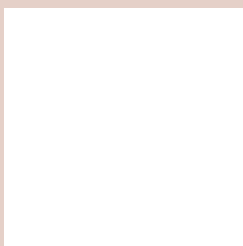
If you want to check with other color combinations, try the [Color Contrast Checker](#).

XYZ 65.2943, 65.9399, 63.9299

Background



This preview shows how black text looks on a background with the XYZ color 65.2943, 65.9399, 63.9299.



This preview shows how white text looks on a background with the XYZ color 65.2943, 65.9399, 63.9299.

63.9299.

Color Blindness Simulation

Color vision deficiency is a very complex topic, and I could not describe the different causes any better than Wikipedia does, so if you want to learn more, you should check out their [article about color blindness](#).

Dichromacy



Original Color

65.2943, 65.9399, 63.9299

Protanopia

62.8684, 65.7582, 65.2562

Deuteranopia

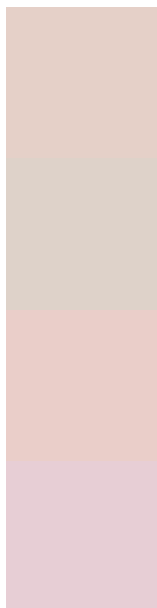
67.2990, 65.8842, 64.4282



Tritanopia

68.1612, 66.0389, 77.5609

Trichromacy



Original Color

65.2943, 65.9399, 63.9299

Protanomaly

63.7134, 65.8398, 64.6086

Deuteranomaly

66.5456, 65.8521, 64.4617

Tritanomaly

67.0365, 65.9356, 72.1444

Monochromacy



Original Color

65.2943, 65.9399, 63.9299

Achromatopsia

63.2451, 66.5387, 72.4607

Achromatomaly

63.8928, 66.2027, 69.0854

CSS Examples

Text

The CSS property to change the color of the text to XYZ 65.2943, 65.9399, 63.9299 is called "color". The color property can be set on classes, ids or directly on the HTML element.

This example shows how text in the color `rgb(229, 208, 200)` looks like.

```
.text, #text, p{  
    color:rgb(229, 208, 200)  
}
```

If you want to add a text shadow in that color use the text-shadow property, you can generate a text shadow directly with our [CSS Text Shadow Generator](#).

Here you see how black text with a 4 pixel rgb(229, 208, 200) colored shadow looks like.

```
.shadow{ text-shadow: 4px 4px 2px rgb(229, 208, 200) }
```

Border

The CSS property to change the border of an element to XYZ 65.2943, 65.9399, 63.9299 is called "border". The border property can be set on classes, ids or directly on the HTML element.

This example shows the color as border, it can be applied via the CSS property "border" or "border-color".

```
.border, #border, table{ border:4px solid rgb(229, 208, 200) }
```


If only the border color should be changed use the property `border-color`.

```
.border{ border-color:rgb(229, 208, 200) }
```

If you want to add a box shadow in that color use:

Here you see how a box with a 4 pixel `rgb(229, 208, 200)` colored shadow looks like.

```
.boxshadow{ -moz-box-shadow:4px 4px 4px 4px rgb(229, 208, 200); -webkit-box-shadow:4px 4px 4px 4px rgb(229, 208, 200); box-shadow:4px 4px 4px 4px rgb(229, 208, 200) }
```

Background

The CSS property to change the background color of an element to XYZ 65.2943, 65.9399, 63.9299 is called "background". The background property can be set on classes, ids or directly on the HTML element.

```
.background, #background, body{  
background: rgb(229, 208, 200) }
```

If only the background color should be changed can be used:

```
.background{ background-color: rgb(229,  
208, 200) }
```

This example shows the color as background, it is applied via the CSS property "background".

To optimize and compress your CSS code, you can use our [online CSS compressor and optimizer](#) based on csstidy. If you want to create a linear or radial gradient as background or border, check our [CSS Gradient Generator](#).

Hey! You found this booklet interesting? Support Converting Colors with the new Membership Option!

The pro membership hides all ads, plus gives you double the colors in the color bucket, and more awesome pro features!

[Learn more, Memberships starting at \\$2.50/m!](#)

**Follow me
on Twitter!**

@ConvertingColor