

Converting Colors

XYZ(65.3444, 63.8009, 62.8738)

Have a look what the booklet for
XYZ(65.3444, 63.8009, 62.8738)
contains.

XYZ(65.3610, 63.8570, 62.9136)	3
<i>Conversions</i>	4
<i>Details</i>	6
<i>Harmonies</i>	12
<i>Previews</i>	24
<i>Color Blindness Simulation</i>	28
<i>CSS Examples</i>	31

Color

**XYZ(65.3610, 63.8570,
62.9136)**

Conversions

Conversions Part 1

Format	Color
Hex	EACAC7
RGB	234, 202, 199
RGB Percent	92%, 79%, 78%
CMY	0.0824, 0.2078, 0.2196
CMYK	0.00, 0.14, 0.15, 0.08
HSL	5°, 45%, 85%
HSV	5°, 15%, 92%
XYZ	65.3610, 63.8570, 62.9136
YIQ	211.2260, 20.0350, 5.8510

Conversions

Conversions Part 2

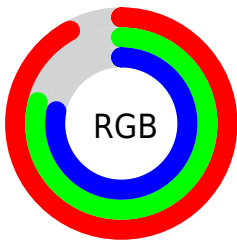
Format	Color
R_{YB}	234, 202, 199
Decimal	15387335
CIE _{Lab}	83.89, 10.76, 5.65
CIE _{LCh}	84, 12.155, 27.676
Yxy	63.8570, 0.3402, 0.3324
Android (android.graphics.Color)	4293577415 (0xFFEACAC7)
YUV	211.2260, -6.0274, 19.9728
Hunter-Lab	79.9106, 6.1564, 9.2584

Details

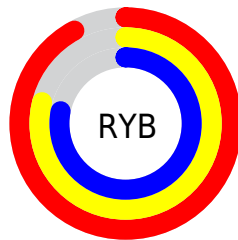
The XYZ color **65.3610, 63.8570, 62.9136** is a light color, and the websafe version is hex **FFCCCC**. A complement of this color would be **66.9799, 75.2328, 88.8336**, and the grayscale version is **62.0970, 65.3309, 71.1453**.

A 20% lighter version of the original color is **95.0500, 100.0000, 108.9000**, and **34.0608, 32.6891, 31.3025** is the 20% darker color. If you saturate the color by 10%, you get **58.1745, 53.5024, 48.1287**, and if you desaturate by 10%, it is **73.6646, 75.7759, 80.1334**.

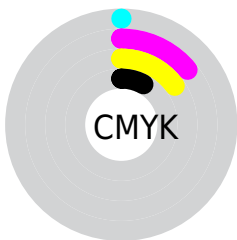
Distribution



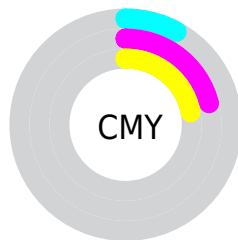
- Red (92%)
- Green (79%)
- Blue (78%)



- Red (92%)
- Yellow (79%)
- Blue (78%)



- Cyan (0%)
- Magenta (14%)
- Yellow (15%)
- Black (8%)



- Cyan (8%)
- Magenta (21%)
- Yellow (22%)

Brightness & Saturation Gradients

These gradients show how the XYZ color 65.3610, 63.8570, 62.9136 changes by changing the brightness by 10 percent. The first figure shows a shift by +10% for each color and the second figure -10%.

Similar to the brightness gradients but the following saturation gradients show a change of the XYZ color 65.3610, 63.8570, 62.9136 by changing the saturation by 10% instead.

65.3610, 63.8570,
62.9136

65.3610, 63.8570,
62.9136

433.6129,
438.6731, 453.3552

48.0196, 46.5349,
45.3308

111.6315,
110.4050, 110.6292

34.0538, 32.6681,
31.3732

141.2914,
140.3996, 141.5991

23.0980, 21.8723,
20.6223

175.7882,
175.3872, 177.8684

14.7870, 13.7631,
12.6597

215.4872,
215.7521, 219.8557

8.7554, 7.9561,
7.0667

260.7538,
261.8787, 267.9794

4.6378, 4.0669,
3.4247

311.9534,

2.0689, 1.7110,

314.1515, 322.6582

1.3154

369.4513,
372.9548, 384.3106

■ 0.6722, 0.4308,
0.0744

■ 0.0000, 0.0000,
0.0000

■ 65.3610, 63.8570,
62.9136

■ 65.3610, 63.8570,
62.9136

■ 58.1745, 53.5024,
48.1287

■ 73.6646, 75.7759,
80.1334

■ 52.0524, 44.6391,
35.6650

■ 83.1246, 89.3112,
99.8869

■ 46.9454, 37.2008,
25.4059

■ 87.7419, 96.2325,
108.5580

■ 42.7986, 31.1131,
17.2227

■ 39.5515, 26.2948,
10.9737

■ 37.1369, 22.6560,
6.4993

■ 35.4781, 20.0948,
3.6146

■ 34.4838, 18.4920,
2.0933

■ 34.1836, 17.9959,
1.6719

Harmonies

Analogous

The Analogous color harmony consists of three colors that are next to each other on the color wheel.



65.9763, 63.8570, 70.1281



65.3610, 63.8570, 62.9136



63.4844, 63.8570, 57.8167

Triad

The Triadic color harmony groups three colors that are evenly spaced from another and form a triangle on the color wheel.



65.3610, 63.8570, 62.9136



56.4533, 63.8570, 61.9512



60.4860, 63.8570, 85.3000

Complementary

The Complementary color scheme is a pair of colors which are on the opposite of each other on the color wheel.



65.3610, 63.8570, 62.9136



66.9799, 75.2328, 88.8336

Split Complementary

Split-complementary colors differ from the complementary color scheme. The scheme consists of three colors, the original color and two neighbors of the complement color.



57.9869, 63.8570, 82.7259



65.3610, 63.8570, 62.9136



55.7017, 63.8570, 68.9342

Square

The Square scheme is like the rectangle color scheme, but the four colors are evenly spaced on the color wheel.



65.3610, 63.8570, 62.9136



58.3379, 63.8570, 57.2904



56.2549, 63.8570, 76.5935



63.1131, 63.8570, 83.3980

Rectangle

The Rectangle color scheme consists of four colors that form a rectangle on the color wheel.



65.3610, 63.8570, 62.9136



61.7979, 63.8570, 56.1164



56.2549, 63.8570, 76.5935



59.6036, 63.8570, 84.9257

Sweetspot

The Sweet Spot groups the original color and five complimentary colors.



65.3628, 63.8599, 62.9149



90.5481, 93.5547, 99.5117



68.7914, 64.1144, 84.4132



19.2053, 19.7728, 20.9337



0.0000, 0.0000, 0.0000



20.3446, 21.4041, 23.3091

Same Dimension

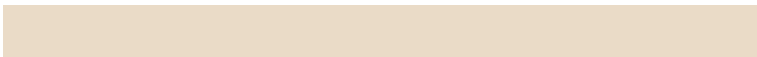
The Same Dimension uses a secret algorithm to generate beautiful new colors.



65.3628, 63.8599, 62.9149



76.5653, 73.4769, 70.5336



69.6815, 72.4974, 64.3545



15.1694, 15.2618, 15.6650



19.2463, 10.1869, 0.9519



1.5472, 0.8717, 0.0867

Inverse Universe

The Inverse Universe completely reimagines the original color for something new.



66.9799, 75.2328, 88.8336



78.8888, 89.8219, 107.7872



62.3465, 65.9660, 87.2891



15.4007, 16.8878, 19.3702



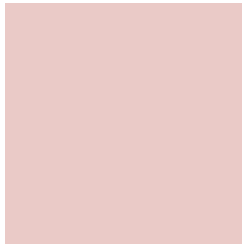
21.8929, 30.4327, 48.4632



1.7517, 2.4549, 3.8164

Previews

White Background



This preview shows how the XYZ color 65.3610, 63.8570, 62.9136 looks on a white background.

Color Contrast Check

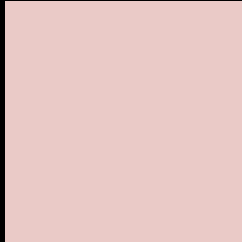
Large Text (above 18pt) WCAG AA × Fail

Any Text WCAG AA × Fail

Large Text (above 18pt) WCAG AAA × Fail

Any Text WCAG AAA × Fail

Black Background



This preview shows how the XYZ color 65.3610, 63.8570, 62.9136 looks on a black background.

Color Contrast Check

Large Text (above 18pt) WCAG AA ✓ Pass

Any Text WCAG AA ✓ Pass

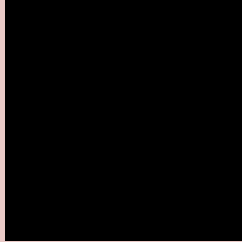
Large Text (above 18pt) WCAG AAA ✓ Pass

Any Text WCAG AAA ✓ Pass

If you want to check with other color combinations, try the [Color Contrast Checker](#).

XYZ 65.3610, 63.8570, 62.9136

Background



This preview shows how black text looks on a background with the XYZ color 65.3610, 63.8570, 62.9136.

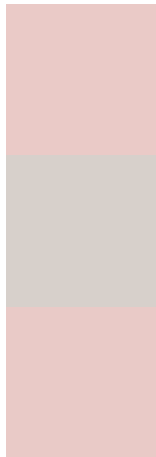


This preview shows how white text looks on a background with the XYZ color 65.3610, 63.8570,

Color Blindness Simulation

Color vision deficiency is a very complex topic, and I could not describe the different causes any better than Wikipedia does, so if you want to learn more, you should check out their [article about color blindness](#).

Dichromacy



Original Color

65.3610, 63.8570, 62.9136

Protanopia

61.3597, 63.8706, 65.5942

Deuteranopia

65.0336, 63.6882, 62.8982



Tritanopia

67.5121, 64.0477, 73.0942

Trichromacy



Original Color

65.3610, 63.8570, 62.9136

Protanomaly

62.8562, 63.9365, 64.9052

Deuteranomaly

65.0336, 63.6882, 62.8982

Tritanomaly

66.6562, 64.0389, 69.1692

Monochromacy



Original Color

65.3610, 63.8570, 62.9136

Achromatopsia

61.9161, 65.1406, 70.9381

Achromatomaly

63.0318, 64.6768, 68.1932

CSS Examples

Text

The CSS property to change the color of the text to XYZ 65.3610, 63.8570, 62.9136 is called "color". The color property can be set on classes, ids or directly on the HTML element.

This example shows how text in the color `rgb(234, 202, 199)` looks like.

```
.text, #text, p{  
    color:rgb(234, 202, 199)  
}
```

If you want to add a text shadow in that color use the text-shadow property, you can generate a text shadow directly with our [CSS Text Shadow Generator](#).

Here you see how black text with a 4 pixel rgb(234, 202, 199) colored shadow looks like.

```
.shadow{ text-shadow: 4px 4px 2px rgb(234, 202, 199) }
```

Border

The CSS property to change the border of an element to XYZ 65.3610, 63.8570, 62.9136 is called "border". The border property can be set on classes, ids or directly on the HTML element.

This example shows the color as border, it can be applied via the CSS property "border" or "border-color".

```
.border, #border, table{ border:4px solid rgb(234, 202, 199) }
```


If only the border color should be changed use the property `border-color`.

```
.border{ border-color:rgb(234, 202, 199) }
```

If you want to add a box shadow in that color use:

Here you see how a box with a 4 pixel `rgb(234, 202, 199)` colored shadow looks like.

```
.boxshadow{ -moz-box-shadow:4px 4px 4px  
4px rgb(234, 202, 199); -webkit-box-  
shadow:4px 4px 4px 4px rgb(234, 202, 199);  
box-shadow:4px 4px 4px 4px rgb(234, 202,  
199) }
```

Background

The CSS property to change the background color of an element to XYZ 65.3610, 63.8570, 62.9136 is called "background". The background property can be set on classes, ids or directly on the HTML element.

```
.background, #background, body{  
background: rgb(234, 202, 199) }
```

If only the background color should be changed can be used:

```
.background{ background-color: rgb(234,  
202, 199) }
```

This example shows the color as background, it is applied via the CSS property "background".

To optimize and compress your CSS code, you can use our [online CSS compressor and optimizer](#) based on csstidy. If you want to create a linear or radial gradient as background or border, check our [CSS Gradient Generator](#).

Hey! You found this booklet interesting? Support Converting Colors with the new Membership Option!

The pro membership hides all ads, plus gives you double the colors in the color bucket, and more awesome pro features!

[Learn more, Memberships starting at \\$2.50/m!](#)

**Follow me
on Twitter!**

@ConvertingColor