

Converting Colors

XYZ(65.3919, 64.8479, 71.4125)

Have a look what the booklet for
XYZ(65.3919, 64.8479, 71.4125)
contains.

| | |
|------------------------------------------------|----|
| XYZ(65.3935, 64.7470, 71.3382) | 3 |
| <i>Conversions</i> | 4 |
| <i>Details</i> | 6 |
| <i>Harmonies</i> | 12 |
| <i>Previews</i> | 24 |
| <i>Color Blindness Simulation</i> | 28 |
| <i>CSS Examples</i> | 31 |

Color

**XYZ(65.3935, 64.7470,
71.3382)**

Conversions

Conversions Part 1

| Format | Color |
|---------------|---------------------------|
| Hex | E3CDD4 |
| RGB | 227, 205, 212 |
| RGB Percent | 89%, 80%, 83% |
| CMY | 0.1098, 0.1961, 0.1686 |
| CMYK | 0.00, 0.10, 0.07, 0.11 |
| HSL | 341°, 28%, 85% |
| HSV | 341°, 10%, 89% |
| XYZ | 65.3935, 64.7470, 71.3382 |
| YIQ | 212.3760, 10.8650, 6.8410 |

Conversions

Conversions Part 2

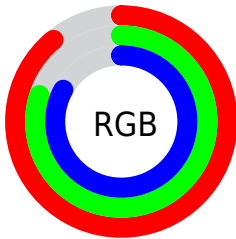
| Format | Color |
|-------------------------------------|-------------------------------|
| R _Y B | 227, 205, 212 |
| Decimal | 14929364 |
| CIE Lab | 84.35, 8.85, -0.68 |
| CIE LCh | 84, 8.873, 355.577 |
| Yxy | 64.7470, 0.3246, 0.3214 |
| Android (android.graphics.Color) | 4293119444 (0xFFE3CDD4) |
| YUV | 212.3760, -0.1854, 12.8252 |
| Hunter-Lab | 80.4655, 4.2505, 3.7612 |

Details

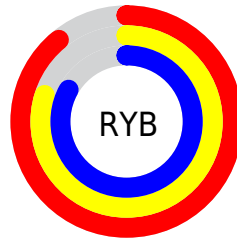
The XYZ color **65.3935, 64.7470, 71.3382** is a light color, and the websafe version is hex **CCCCCC**. A complement of this color would be **65.5666, 73.0862, 78.3649**, and the grayscale version is **62.8271, 66.0990, 71.9818**.

A 20% lighter version of the original color is **95.0500, 100.0000, 108.9000**, and **34.1657, 33.3382, 36.5325** is the 20% darker color. If you saturate the color by 10%, you get **58.4927, 53.9215, 59.8613**, and if you desaturate by 10%, it is **73.2730, 77.2286, 84.0666**.

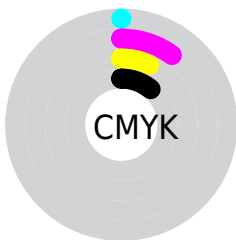
Distribution



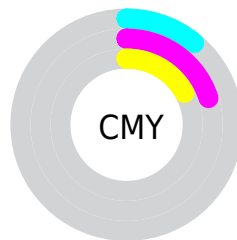
- Red (89%)
- Green (80%)
- Blue (83%)



- Red (89%)
- Yellow (80%)
- Blue (83%)



- Cyan (0%)
- Magenta (10%)
- Yellow (7%)
- Black (11%)



- Cyan (11%)
- Magenta (20%)
- Yellow (17%)

Brightness & Saturation Gradients

These gradients show how the XYZ color 65.3935, 64.7470, 71.3382 changes by changing the brightness by 10 percent. The first figure shows a shift by +10% for each color and the second figure -10%.

Similar to the brightness gradients but the following saturation gradients show a change of the XYZ color 65.3935, 64.7470, 71.3382 by changing the saturation by 10% instead.

65.3935, 64.7470,
71.3382

65.3935, 64.7470,
71.3382

433.7276,
441.8822, 484.1503

48.0461, 47.2560,
52.1347

111.6780,
111.6860, 122.8141

34.0748, 33.2380,
36.7295

141.3457,
141.9028, 155.9236

23.1142, 22.3089,
24.7040

175.8510,
177.1303, 194.5055

14.7990, 14.0840,
15.6396

215.5592,
217.7529, 238.9784

8.7639, 8.1791,
9.1179

260.8356,
264.1550, 289.7608

4.6434, 4.2098,
4.7203

312.0455,

2.0722, 1.7916,

316.7210, 347.2712

2.0283

369.5544,
375.8353, 411.9282

■ 0.6740, 0.4819,
0.5726

■ 0.0000, 0.0000,
0.0000

■ 65.3935, 64.7470,
71.3382

■ 65.3935, 64.7470,
71.3382

■ 58.4927, 53.9215,
59.8613

■ 73.2730, 77.2286,
84.0666

■ 52.5261, 44.6739,
49.5929

■ 82.1625, 91.4234,
98.0795

■ 47.4538, 36.9325,
40.4935

■ 85.4889, 95.0711,
108.4525

■ 43.2309, 30.6166,
32.5197

■ 39.8084, 25.6379,
25.6254

■ 37.1321, 21.8982,
19.7608

■ 35.1405, 19.2854,
14.8718

■ 33.7615, 17.6673,
10.8984

■ 32.8786, 16.8232,
7.7624

Harmonies

Analogous

The Analogous color harmony consists of three colors that are next to each other on the color wheel.



64.7170, 64.7470, 76.8089



65.3935, 64.7470, 71.3382



65.0195, 64.7470, 65.9191

Triad

The Triadic color harmony groups three colors that are evenly spaced from another and form a triangle on the color wheel.



65.3935, 64.7470, 71.3382



59.9196, 64.7470, 61.1612



59.4240, 64.7470, 79.8286

Complementary

The Complementary color scheme is a pair of colors which are on the opposite of each other on the color wheel.



65.3935, 64.7470, 71.3382



65.5666, 73.0862, 78.3649

Split Complementary

Split-complementary colors differ from the complementary color scheme. The scheme consists of three colors, the original color and two neighbors of the complement color.



58.1870, 64.7470, 75.2852



65.3935, 64.7470, 71.3382



58.4688, 64.7470, 64.5435

Square

The Square scheme is like the rectangle color scheme, but the four colors are evenly spaced on the color wheel.



65.3935, 64.7470, 71.3382



61.8326, 64.7470, 60.2287



57.8411, 64.7470, 69.6654



61.2485, 64.7470, 81.8740

Rectangle

The Rectangle color scheme consists of four colors that form a rectangle on the color wheel.



65.3935, 64.7470, 71.3382



64.2290, 64.7470, 63.0329



57.8411, 64.7470, 69.6654



58.9273, 64.7470, 78.5314

Sweetspot

The Sweet Spot groups the original color and five complimentary colors.



65.3953, 64.7498, 71.3396



91.8292, 94.8843, 103.7389



65.1130, 64.3754, 81.6676



19.4753, 20.0238, 21.9146



0.0000, 0.0000, 0.0000



20.3446, 21.4041, 23.3091

Same Dimension

The Same Dimension uses a secret algorithm to generate beautiful new colors.



65.3953, 64.7498, 71.3396



82.8737, 80.7347, 89.1574



65.4189, 66.1789, 67.0869



14.5649, 14.4432, 15.9093



19.2080, 9.8174, 4.7241



1.4604, 0.7419, 0.5652

Inverse Universe

The Inverse Universe completely reimagines the original color for something new.



65.3953, 64.7498, 71.3396



82.8737, 80.7347, 89.1574



65.5209, 71.4806, 83.0176



14.5649, 14.4432, 15.9093



19.2080, 9.8174, 4.7241



1.4604, 0.7419, 0.5652

Previews

White Background



This preview shows how the XYZ color 65.3935, 64.7470, 71.3382 looks on a white background.

Color Contrast Check

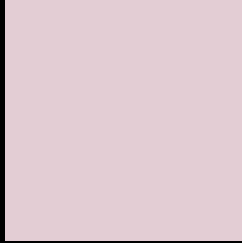
Large Text (above 18pt) WCAG AA × Fail

Any Text WCAG AA × Fail

Large Text (above 18pt) WCAG AAA × Fail

Any Text WCAG AAA × Fail

Black Background



This preview shows how the XYZ color 65.3935, 64.7470, 71.3382 looks on a black background.

Color Contrast Check

Large Text (above 18pt) WCAG AA ✓ Pass

Any Text WCAG AA ✓ Pass

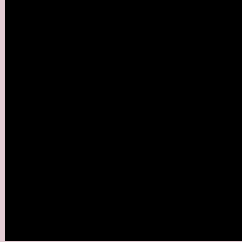
Large Text (above 18pt) WCAG AAA ✓ Pass

Any Text WCAG AAA ✓ Pass

If you want to check with other color combinations, try the [Color Contrast Checker](#).

XYZ 65.3935, 64.7470, 71.3382

Background



This preview shows how black text looks on a background with the XYZ color 65.3935, 64.7470, 71.3382.

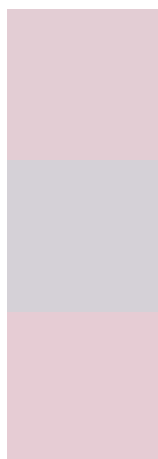


This preview shows how white text looks on a background with the XYZ color 65.3935, 64.7470,

Color Blindness Simulation

Color vision deficiency is a very complex topic, and I could not describe the different causes any better than Wikipedia does, so if you want to learn more, you should check out their [article about color blindness](#).

Dichromacy



Original Color

65.3935, 64.7470, 71.3382

Protanopia

62.5068, 64.6534, 73.4749

Deuteranopia

66.1097, 64.7622, 71.3034



Tritanopia

66.5060, 64.8470, 76.7216

Trichromacy



Original Color

65.3935, 64.7470, 71.3382

Protanomaly

63.6069, 64.8722, 72.7875

Deuteranomaly

65.7896, 64.5972, 71.2884

Tritanomaly

66.1122, 64.6895, 74.6475

Monochromacy



Original Color

65.3935, 64.7470, 71.3382

Achromatopsia

62.5785, 65.8375, 71.6970

Achromatomaly

63.2994, 65.1061, 71.5179

CSS Examples

Text

The CSS property to change the color of the text to XYZ 65.3935, 64.7470, 71.3382 is called "color". The color property can be set on classes, ids or directly on the HTML element.

This example shows how text in the color `rgb(227, 205, 212)` looks like.

```
.text, #text, p{  
    color:rgb(227, 205, 212)  
}
```

If you want to add a text shadow in that color use the text-shadow property, you can generate a text shadow directly with our [CSS Text Shadow Generator](#).

Here you see how black text with a 4 pixel rgb(227, 205, 212) colored shadow looks like.

```
.shadow{ text-shadow: 4px 4px 2px rgb(227, 205, 212) }
```

Border

The CSS property to change the border of an element to XYZ 65.3935, 64.7470, 71.3382 is called "border". The border property can be set on classes, ids or directly on the HTML element.

This example shows the color as border, it can be applied via the CSS property "border" or "border-color".

```
.border, #border, table{ border:4px solid rgb(227, 205, 212) }
```


If only the border color should be changed use the property `border-color`.

```
.border{ border-color:rgb(227, 205, 212) }
```

If you want to add a box shadow in that color use:

Here you see how a box with a 4 pixel `rgb(227, 205, 212)` colored shadow looks like.

```
.boxshadow{ -moz-box-shadow:4px 4px 4px  
4px rgb(227, 205, 212); -webkit-box-  
shadow:4px 4px 4px 4px rgb(227, 205, 212);  
box-shadow:4px 4px 4px 4px rgb(227, 205,  
212) }
```

Background

The CSS property to change the background color of an element to XYZ 65.3935, 64.7470, 71.3382 is called "background". The background property can be set on classes, ids or directly on the HTML element.

```
.background, #background, body{  
background: rgb(227, 205, 212) }
```

If only the background color should be changed can be used:

```
.background{ background-color: rgb(227,  
205, 212) }
```

This example shows the color as background, it is applied via the CSS property "background".

To optimize and compress your CSS code, you can use our [online CSS compressor and optimizer](#) based on csstidy. If you want to create a linear or radial gradient as background or border, check our [CSS Gradient Generator](#).

Hey! You found this booklet interesting? Support Converting Colors with the new Membership Option!

The pro membership hides all ads, plus gives you double the colors in the color bucket, and more awesome pro features!

[Learn more, Memberships starting at \\$2.50/m!](#)

**Follow me
on Twitter!**

@ConvertingColor