

Converting Colors

XYZ(65.4447, 65.0695, 72.7501)

Have a look what the booklet for
XYZ(65.4447, 65.0695, 72.7501)
contains.

XYZ(65.5729, 65.1664, 72.7406)	3
<i>Conversions</i>	4
<i>Details</i>	6
<i>Harmonies</i>	12
<i>Previews</i>	24
<i>Color Blindness Simulation</i>	28
<i>CSS Examples</i>	31

Color

**XYZ(65.5729, 65.1664,
72.7406)**

Conversions

Conversions Part 1

Format	Color
Hex	E2CED6
RGB	226, 206, 214
RGB Percent	89%, 81%, 84%
CMY	0.1137, 0.1921, 0.1608
CMYK	0.00, 0.09, 0.05, 0.11
HSL	336°, 26%, 85%
HSV	336°, 9%, 89%
XYZ	65.5729, 65.1664, 72.7406
YIQ	212.8920, 9.3520, 6.7280

Conversions

Conversions Part 2

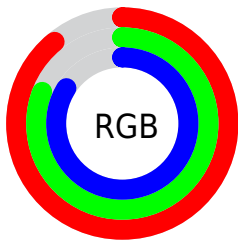
Format	Color
R _Y B	226, 206, 214
Decimal	14864086
CIE Lab	84.57, 8.32, -1.44
CIE LCh	85, 8.442, 350.162
Yxy	65.1664, 0.3223, 0.3203
Android (android.graphics.Color)	4293054166 (0xFFE2CED6)
YUV	212.8920, 0.5462, 11.4957
Hunter-Lab	80.7257, 3.7242, 3.0828

Details

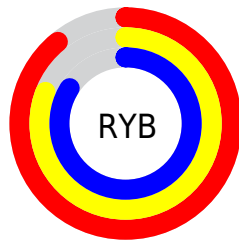
The XYZ color **65.5729, 65.1664, 72.7406** is a light color, and the websafe version is hex **CCCCCC**. A complement of this color would be **65.3073, 72.5781, 76.9001**, and the grayscale version is **63.1673, 66.4569, 72.3716**.

A 20% lighter version of the original color is **95.0500, 100.0000, 108.9000**, and **34.2808, 33.6176, 37.4829** is the 20% darker color. If you saturate the color by 10%, you get **58.8583, 54.3940, 62.3097**, and if you desaturate by 10%, it is **73.2178, 77.5667, 84.1948**.

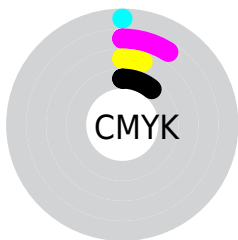
Distribution



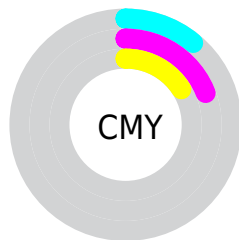
- Red (89%)
- Green (81%)
- Blue (84%)



- Red (89%)
- Yellow (81%)
- Blue (84%)



- Cyan (0%)
- Magenta (9%)
- Yellow (5%)
- Black (11%)



- Cyan (11%)
- Magenta (19%)
- Yellow (16%)

Brightness & Saturation Gradients

These gradients show how the XYZ color 65.5729, 65.1664, 72.7406 changes by changing the brightness by 10 percent. The first figure shows a shift by +10% for each color and the second figure -10%.

Similar to the brightness gradients but the following saturation gradients show a change of the XYZ color 65.5729, 65.1664, 72.7406 by changing the saturation by 10% instead.

65.5729, 65.1664,
72.7406

65.5729, 65.1664,
72.7406

434.3606,
443.3897, 489.1619

48.1922, 47.5960,
53.2734

111.9342,
112.2891, 124.8264

34.1910, 33.5071,
37.6318

141.6456,
142.6101, 158.2820

23.2040, 22.5152,
25.3974

176.1979,
177.9502, 197.2375

14.8657, 14.2359,
16.1517

215.9564,
218.6937, 242.1114

8.8109, 8.2849,
9.4760

261.2866,
265.2250, 293.3223

4.6742, 4.2778,
4.9519

312.5538,

2.0902, 1.8302,

317.9285, 351.2886

2.1608

370.1234,
377.1886, 416.4290

■ 0.6839, 0.5059,
0.6516

■ 0.0000, 0.0000,
0.0000

■ 65.5729, 65.1664,
72.7406

■ 65.5729, 65.1664,
72.7406

■ 58.8583, 54.3940,
62.3097

■ 73.2178, 77.5667,
84.1948

■ 53.0316, 45.1732,
52.8684

■ 81.8219, 91.6503,
96.6962

■ 48.0555, 37.4341,
44.3870

■ 85.1244, 94.8889,
108.1747

■ 43.8877, 31.0982,
36.8329

■ 85.1744, 94.9089,
108.4378

■ 40.4821, 26.0797,
30.1711

■ 37.7877, 22.2832,
24.3643

■ 35.7469, 19.6003,
19.3716

■ 34.2920, 17.9032,
15.1480

■ 33.3217, 16.9971,
11.6354

Harmonies

Analogous

The Analogous color harmony consists of three colors that are next to each other on the color wheel.



64.7590, 65.1664, 77.8032



65.5729, 65.1664, 72.7406



65.3980, 65.1664, 67.4428

Triad

The Triadic color harmony groups three colors that are evenly spaced from another and form a triangle on the color wheel.



65.5729, 65.1664, 72.7406



60.6998, 65.1664, 61.6647



59.6494, 65.1664, 79.2138

Complementary

The Complementary color scheme is a pair of colors which are on the opposite of each other on the color wheel.



65.5729, 65.1664, 72.7406



65.3073, 72.5781, 76.9001

Split Complementary

Split-complementary colors differ from the complementary color scheme. The scheme consists of three colors, the original color and two neighbors of the complement color.



58.6036, 65.1664, 74.5874



65.5729, 65.1664, 72.7406



59.2015, 65.1664, 64.5211

Square

The Square scheme is like the rectangle color scheme, but the four colors are evenly spaced on the color wheel.



65.5729, 65.1664, 72.7406



62.5590, 65.1664, 61.2262



58.4413, 65.1664, 69.1991



61.3225, 65.1664, 81.6636

Rectangle

The Rectangle color scheme consists of four colors that form a rectangle on the color wheel.



65.5729, 65.1664, 72.7406



64.7455, 65.1664, 64.4790



58.4413, 65.1664, 69.1991



59.2143, 65.1664, 77.8510

Sweetspot

The Sweet Spot groups the original color and five complimentary colors.



65.5748, 65.1692, 72.7420



91.9275, 94.9236, 104.2562



64.7145, 64.5421, 80.9993



19.5018, 20.0344, 22.0540



0.0000, 0.0000, 0.0000



20.3446, 21.4041, 23.3091

Same Dimension

The Same Dimension uses a secret algorithm to generate beautiful new colors.



65.5748, 65.1692, 72.7420



84.1525, 82.3537, 92.4780



65.0627, 65.7396, 67.6558



13.9332, 13.7909, 15.4183



19.0101, 9.6710, 6.7188



1.3610, 0.6877, 0.6940

Inverse Universe

The Inverse Universe completely reimagines the original color for something new.



65.5748, 65.1692, 72.7420



84.1525, 82.3537, 92.4780



65.8388, 71.9258, 82.3653



13.9332, 13.7909, 15.4183



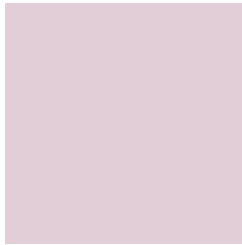
19.0101, 9.6710, 6.7188



1.3610, 0.6877, 0.6940

Previews

White Background



This preview shows how the XYZ color 65.5729, 65.1664, 72.7406 looks on a white background.

Color Contrast Check

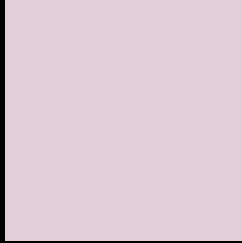
Large Text (above 18pt) WCAG AA × Fail

Any Text WCAG AA × Fail

Large Text (above 18pt) WCAG AAA × Fail

Any Text WCAG AAA × Fail

Black Background



This preview shows how the XYZ color 65.5729, 65.1664, 72.7406 looks on a black background.

Color Contrast Check

Large Text (above 18pt) WCAG AA ✓ Pass

Any Text WCAG AA ✓ Pass

Large Text (above 18pt) WCAG AAA ✓ Pass

Any Text WCAG AAA ✓ Pass

If you want to check with other color combinations, try the [Color Contrast Checker](#).

XYZ 65.5729, 65.1664, 72.7406

Background



This preview shows how black text looks on a background with the XYZ color 65.5729, 65.1664, 72.7406.



This preview shows how white text looks on a background with the XYZ color 65.5729, 65.1664,

Color Blindness Simulation

Color vision deficiency is a very complex topic, and I could not describe the different causes any better than Wikipedia does, so if you want to learn more, you should check out their [article about color blindness](#).

Dichromacy



Original Color

65.5729, 65.1664, 72.7406

Protanopia

62.8818, 65.1972, 74.2358

Deuteranopia

66.6020, 65.3407, 72.7200



Tritanopia

66.5610, 65.2140, 77.4860

Trichromacy



Original Color

65.5729, 65.1664, 72.7406

Protanomaly

63.9796, 65.4127, 73.5438

Deuteranomaly

66.2820, 65.1757, 72.7051

Tritanomaly

66.1648, 65.0555, 75.3994

Monochromacy



Original Color

65.5729, 65.1664, 72.7406

Achromatopsia

63.2451, 66.5387, 72.4607

Achromatomaly

63.9703, 65.8027, 72.2804

CSS Examples

Text

The CSS property to change the color of the text to XYZ 65.5729, 65.1664, 72.7406 is called "color". The color property can be set on classes, ids or directly on the HTML element.

This example shows how text in the color `rgb(226, 206, 214)` looks like.

```
.text, #text, p{  
    color:rgb(226, 206, 214)  
}
```

If you want to add a text shadow in that color use the text-shadow property, you can generate a text shadow directly with our [CSS Text Shadow Generator](#).

Here you see how black text with a 4 pixel rgb(226, 206, 214) colored shadow looks like.

```
.shadow{ text-shadow: 4px 4px 2px rgb(226, 206, 214) }
```

Border

The CSS property to change the border of an element to XYZ 65.5729, 65.1664, 72.7406 is called "border". The border property can be set on classes, ids or directly on the HTML element.

This example shows the color as border, it can be applied via the CSS property "border" or "border-color".

```
.border, #border, table{ border:4px solid rgb(226, 206, 214) }
```


If only the border color should be changed use the property `border-color`.

```
.border{ border-color:rgb(226, 206, 214) }
```

If you want to add a box shadow in that color use:

Here you see how a box with a 4 pixel `rgb(226, 206, 214)` colored shadow looks like.

```
.boxshadow{ -moz-box-shadow:4px 4px 4px  
4px rgb(226, 206, 214); -webkit-box-  
shadow:4px 4px 4px 4px rgb(226, 206, 214);  
box-shadow:4px 4px 4px 4px rgb(226, 206,  
214) }
```

Background

The CSS property to change the background color of an element to XYZ 65.5729, 65.1664, 72.7406 is called "background". The background property can be set on classes, ids or directly on the HTML element.

```
.background, #background, body{  
background: rgb(226, 206, 214) }
```

If only the background color should be changed can be used:

```
.background{ background-color: rgb(226,  
206, 214) }
```

This example shows the color as background, it is applied via the CSS property "background".

To optimize and compress your CSS code, you can use our [online CSS compressor and optimizer](#) based on csstidy. If you want to create a linear or radial gradient as background or border, check our [CSS Gradient Generator](#).

Hey! You found this booklet interesting? Support Converting Colors with the new Membership Option!

The pro membership hides all ads, plus gives you double the colors in the color bucket, and more awesome pro features!

[Learn more, Memberships starting at \\$2.50/m!](#)

**Follow me
on Twitter!**

@ConvertingColor