

Converting Colors

XYZ(65.4607, 63.7841, 68.5359)

Have a look what the booklet for
XYZ(65.4607, 63.7841, 68.5359)
contains.

XYZ(65.4607, 63.7841, 68.5359)	3
<i>Conversions</i>	4
<i>Details</i>	6
<i>Harmonies</i>	12
<i>Previews</i>	24
<i>Color Blindness Simulation</i>	28
<i>CSS Examples</i>	31

Color

**XYZ(65.4607, 63.7841,
68.5359)**

Conversions

Conversions Part 1

Format	Color
Hex	E7CAD0
RGB	231, 202, 208
RGB Percent	91%, 79%, 82%
CMY	0.0941, 0.2078, 0.1843
CMYK	0.00, 0.13, 0.10, 0.09
HSL	348°, 38%, 85%
HSV	348°, 13%, 91%
XYZ	65.4607, 63.7841, 68.5359
YIQ	211.3550, 15.3580, 8.0140

Conversions

Conversions Part 2

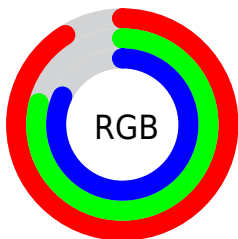
Format	Color
R _Y B	231, 202, 208
Decimal	15190736
CIE Lab	83.85, 11.15, 0.76
CIE LCh	84, 11.178, 3.892
Yxy	63.7841, 0.3310, 0.3225
Android (android.graphics.Color)	4293380816 (0xFFE7CAD0)
YUV	211.3550, -1.6540, 17.2287
Hunter-Lab	79.8649, 6.5425, 5.0259

Details

The XYZ color **65.4607, 63.7841, 68.5359** is a light color, and the websafe version is hex **FFCCCC**. A complement of this color would be **66.5261, 75.1462, 82.2363**, and the grayscale version is **62.1566, 65.3936, 71.2136**.

A 20% lighter version of the original color is **95.0500, 100.0000, 108.9000**, and **34.1018, 32.6269, 35.0721** is the 20% darker color. If you saturate the color by 10%, you get **58.3156, 52.8951, 55.6671**, and if you desaturate by 10%, it is **73.6812, 76.4055, 83.0497**.

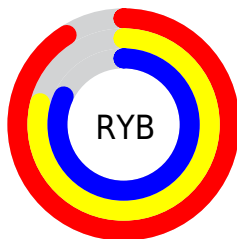
Distribution



Red (91%)

Green (79%)

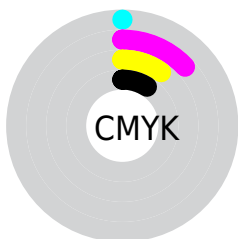
Blue (82%)



Red (91%)

Yellow (79%)

Blue (82%)

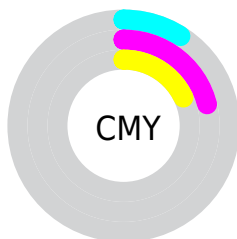


Cyan (0%)

Magenta (13%)

Yellow (10%)

Black (9%)



Cyan (9%)

Magenta (21%)

Yellow (18%)

Brightness & Saturation Gradients

These gradients show how the XYZ color 65.4607, 63.7841, 68.5359 changes by changing the brightness by 10 percent. The first figure shows a shift by +10% for each color and the second figure -10%.

Similar to the brightness gradients but the following saturation gradients show a change of the XYZ color 65.4607, 63.7841, 68.5359 by changing the saturation by 10% instead.

65.4607, 63.7841,
68.5359

65.4607, 63.7841,
68.5359

433.9648,
438.4096, 474.0419

48.1008, 46.4758,
49.8644

111.7740,
110.2999, 118.7799

34.1183, 32.6215,
34.9353

141.4581,
140.2763, 151.1895

23.1478, 21.8366,
23.3299

175.9810,
175.2442, 189.0156

14.8240, 13.7369,
14.6297

215.7080,
215.5879, 232.6767

8.7815, 7.9379,
8.4162

261.0046,
261.6919, 282.5913

4.6549, 4.0552,
4.2708

312.2360,

2.0789, 1.7045,

313.9406, 339.1781

1.7751

369.7676,
372.7184, 402.8554

■ 0.6777, 0.4266,
0.4114

■ 0.0000, 0.0000,
0.0000

■ 65.4607, 63.7841,
68.5359

■ 65.4607, 63.7841,
68.5359

■ 58.3156, 52.8951,
55.6671

■ 73.6812, 76.4055,
83.0497

■ 52.1957, 43.6546,
44.3807

■ 83.0138, 90.8216,
99.2599

■ 47.0549, 35.9845,
34.6161

■ 86.7653, 95.7291,
108.5123

■ 42.8414, 29.7970,
26.3074

■ 39.4984, 24.9955,
19.3833

■ 36.9628, 21.4721,
13.7668

■ 35.1627, 19.1026,
9.3726

■ 34.0125, 17.7378,
6.1047

■ 33.4840, 17.2006,
4.3264

Harmonies

Analogous

The Analogous color harmony consists of three colors that are next to each other on the color wheel.



64.9661, 63.7841, 75.5749



65.4607, 63.7841, 68.5359



64.6310, 63.7841, 62.1763

Triad

The Triadic color harmony groups three colors that are evenly spaced from another and form a triangle on the color wheel.



65.4607, 63.7841, 68.5359



58.0289, 63.7841, 58.8150



58.5699, 63.7841, 82.3196

Complementary

The Complementary color scheme is a pair of colors which are on the opposite of each other on the color wheel.



65.4607, 63.7841, 68.5359



66.5261, 75.1462, 82.2363

Split Complementary

Split-complementary colors differ from the complementary color scheme. The scheme consists of three colors, the original color and two neighbors of the complement color.



56.7878, 63.7841, 77.2700



65.4607, 63.7841, 68.5359



56.4814, 63.7841, 63.6653

Square

The Square scheme is like the rectangle color scheme, but the four colors are evenly spaced on the color wheel.



65.4607, 63.7841, 68.5359



60.3048, 63.7841, 56.8088



56.0333, 63.7841, 70.3723



60.9460, 63.7841, 83.8399

Rectangle

The Rectangle color scheme consists of four colors that form a rectangle on the color wheel.



65.4607, 63.7841, 68.5359



63.4513, 63.7841, 59.0841



56.0333, 63.7841, 70.3723



57.8836, 63.7841, 80.9626

Sweetspot

The Sweet Spot groups the original color and five complimentary colors.



65.4625, 63.7869, 68.5373



90.6064, 93.1537, 101.1272



66.5095, 63.9756, 84.4451



19.2200, 19.6718, 21.3407



0.0000, 0.0000, 0.0000



20.3446, 21.4041, 23.3091

Same Dimension

The Same Dimension uses a secret algorithm to generate beautiful new colors.



65.4625, 63.7869, 68.5373



79.5326, 76.1746, 81.5022



66.7178, 67.4560, 65.3845



14.4983, 14.4165, 15.5584



18.8076, 9.6572, 2.6157



1.4230, 0.7269, 0.3683

Inverse Universe

The Inverse Universe completely reimagines the original color for something new.



65.4625, 63.7869, 68.5373



79.5326, 76.1746, 81.5022



65.1130, 70.9878, 85.8722



14.4983, 14.4165, 15.5584



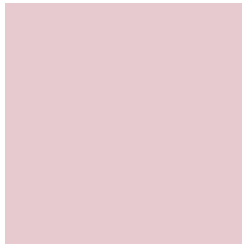
18.8076, 9.6572, 2.6157



1.4230, 0.7269, 0.3683

Previews

White Background



This preview shows how the XYZ color 65.4607, 63.7841, 68.5359 looks on a white background.

Color Contrast Check

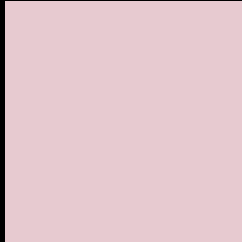
Large Text (above 18pt) WCAG AA × Fail

Any Text WCAG AA × Fail

Large Text (above 18pt) WCAG AAA × Fail

Any Text WCAG AAA × Fail

Black Background



This preview shows how the XYZ color 65.4607, 63.7841, 68.5359 looks on a black background.

Color Contrast Check

Large Text (above 18pt) WCAG AA ✓ Pass

Any Text WCAG AA ✓ Pass

Large Text (above 18pt) WCAG AAA ✓ Pass

Any Text WCAG AAA ✓ Pass

If you want to check with other color combinations, try the [Color Contrast Checker](#).

XYZ 65.4607, 63.7841, 68.5359

Background



This preview shows how black text looks on a background with the XYZ color 65.4607, 63.7841, 68.5359.



This preview shows how white text looks on a background with the XYZ color 65.4607, 63.7841,

Color Blindness Simulation

Color vision deficiency is a very complex topic, and I could not describe the different causes any better than Wikipedia does, so if you want to learn more, you should check out their [article about color blindness](#).

Dichromacy



Original Color

65.4607, 63.7841, 68.5359

Protanopia

61.5909, 63.8623, 71.3678

Deuteranopia

65.1388, 63.6181, 68.5208



Tritanopia

66.5600, 63.8870, 73.7891

Trichromacy



Original Color

65.4607, 63.7841, 68.5359

Protanomaly

63.0426, 63.9058, 70.6404

Deuteranomaly

65.1388, 63.6181, 68.5208

Tritanomaly

66.1756, 63.7332, 71.7647

Monochromacy



Original Color

65.4607, 63.7841, 68.5359

Achromatopsia

61.9161, 65.1406, 70.9381

Achromatomaly

63.1022, 64.6703, 70.1295

CSS Examples

Text

The CSS property to change the color of the text to XYZ 65.4607, 63.7841, 68.5359 is called "color". The color property can be set on classes, ids or directly on the HTML element.

This example shows how text in the color `rgb(231, 202, 208)` looks like.

```
.text, #text, p{  
    color:rgb(231, 202, 208)  
}
```

If you want to add a text shadow in that color use the text-shadow property, you can generate a text shadow directly with our [CSS Text Shadow Generator](#).

Here you see how black text with a 4 pixel rgb(231, 202, 208) colored shadow looks like.

```
.shadow{ text-shadow: 4px 4px 2px rgb(231, 202, 208) }
```

Border

The CSS property to change the border of an element to XYZ 65.4607, 63.7841, 68.5359 is called "border". The border property can be set on classes, ids or directly on the HTML element.

This example shows the color as border, it can be applied via the CSS property "border" or "border-color".

```
.border, #border, table{ border:4px solid rgb(231, 202, 208) }
```


If only the border color should be changed use the property `border-color`.

```
.border{ border-color:rgb(231, 202, 208) }
```

If you want to add a box shadow in that color use:

Here you see how a box with a 4 pixel `rgb(231, 202, 208)` colored shadow looks like.

```
.boxshadow{ -moz-box-shadow:4px 4px 4px  
4px rgb(231, 202, 208); -webkit-box-  
shadow:4px 4px 4px 4px rgb(231, 202, 208);  
box-shadow:4px 4px 4px 4px rgb(231, 202,  
208) }
```

Background

The CSS property to change the background color of an element to XYZ 65.4607, 63.7841, 68.5359 is called "background". The background property can be set on classes, ids or directly on the HTML element.

```
.background, #background, body{  
background: rgb(231, 202, 208) }
```

If only the background color should be changed can be used:

```
.background{ background-color: rgb(231,  
202, 208) }
```

This example shows the color as background, it is applied via the CSS property "background".

To optimize and compress your CSS code, you can use our [online CSS compressor and optimizer](#) based on csstidy. If you want to create a linear or radial gradient as background or border, check our [CSS Gradient Generator](#).

Hey! You found this booklet interesting? Support Converting Colors with the new Membership Option!

The pro membership hides all ads, plus gives you double the colors in the color bucket, and more awesome pro features!

[Learn more, Memberships starting at \\$2.50/m!](#)

**Follow me
on Twitter!**

@ConvertingColor