

Converting Colors

XYZ(65.5388, 64.4969, 69.9676)

Have a look what the booklet for
XYZ(65.5388, 64.4969, 69.9676)
contains.

XYZ(65.5388, 64.4969, 69.9676)	3
<i>Conversions</i>	4
<i>Details</i>	6
<i>Harmonies</i>	12
<i>Previews</i>	24
<i>Color Blindness Simulation</i>	28
<i>CSS Examples</i>	31

Color

**XYZ(65.5388, 64.4969,
69.9676)**

Conversions

Conversions Part 1

Format	Color
Hex	E5CCD2
RGB	229, 204, 210
RGB Percent	90%, 80%, 82%
CMY	0.1020, 0.2000, 0.1765
CMYK	0.00, 0.11, 0.08, 0.10
HSL	346°, 32%, 85%
HSV	346°, 11%, 90%
XYZ	65.5388, 64.4969, 69.9676
YIQ	212.1590, 12.9740, 7.1660

Conversions

Conversions Part 2

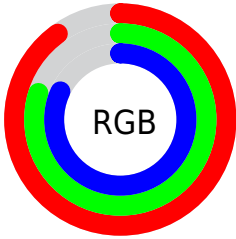
Format	Color
R _Y B	229, 204, 210
Decimal	15060178
CIE Lab	84.22, 9.73, 0.21
CIE LCh	84, 9.733, 1.250
Yxy	64.4969, 0.3277, 0.3225
Android (android.graphics.Color)	4293250258 (0xFFE5CCD2)
YUV	212.1590, -1.0644, 14.7696
Hunter-Lab	80.3100, 5.1266, 4.5624

Details

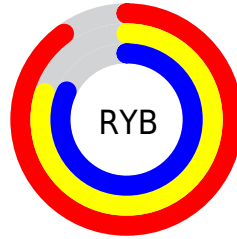
The XYZ color **65.5388, 64.4969, 69.9676** is a light color, and the websafe version is hex **CCCCCC**. A complement of this color would be **66.2429, 74.2053, 80.6474**, and the grayscale version is **62.6874, 65.9520, 71.8217**.

A 20% lighter version of the original color is **95.0500, 100.0000, 108.9000**, and **34.1407, 33.0972, 36.0415** is the 20% darker color. If you saturate the color by 10%, you get **58.4392, 53.5810, 57.4773**, and if you desaturate by 10%, it is **73.6783, 77.1134, 83.9699**.

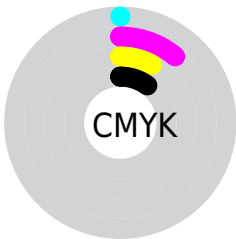
Distribution



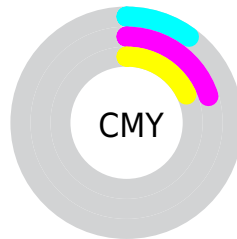
- Red (90%)
- Green (80%)
- Blue (82%)



- Red (90%)
- Yellow (80%)
- Blue (82%)



- Cyan (0%)
- Magenta (11%)
- Yellow (8%)
- Black (10%)



- Cyan (10%)
- Magenta (20%)
- Yellow (18%)

Brightness & Saturation Gradients

These gradients show how the XYZ color 65.5388, 64.4969, 69.9676 changes by changing the brightness by 10 percent. The first figure shows a shift by +10% for each color and the second figure -10%.

Similar to the brightness gradients but the following saturation gradients show a change of the XYZ color 65.5388, 64.4969, 69.9676 by changing the saturation by 10% instead.

65.5388, 64.4969,
69.9676

65.5388, 64.4969,
69.9676

434.2403,
440.9818, 479.2223

48.1644, 47.0532,
51.0235

111.8855,
111.3262, 120.8432

34.1689, 33.0778,
35.8504

141.5886,
141.4807, 153.6118

23.1869, 22.1860,
24.0299

176.1320,
176.6409, 191.8257

14.8530, 13.9936,
15.1434

215.8809,
217.1913, 235.9033

8.8019, 8.1162,
8.7724

261.2009,
263.5162, 286.2632

4.6683, 4.1694,
4.4982

312.4572,

2.0867, 1.7688,

315.9999, 343.3240

1.9025

370.0153,
375.0270, 407.5042

■ 0.6820, 0.4676,
0.4943

■ 0.0000, 0.0000,
0.0000

■ 65.5388, 64.4969,
69.9676

■ 65.5388, 64.4969,
69.9676

■ 58.4392, 53.5810,
57.4773

■ 73.6783, 77.1134,
83.9699

■ 52.3316, 44.2845,
46.4437

■ 82.8919, 91.4900,
99.5288

■ 47.1727, 36.5325,
36.8140

■ 86.1234, 95.3982,
108.4822

■ 42.9136, 30.2406,
28.5309

■ 39.5010, 25.3165,
21.5326

■ 36.8758, 21.6571,
15.7527

■ 34.9709, 19.1447,
11.1179

■ 33.7072, 17.6390,
7.5467

■ 33.0014, 16.9334,
5.1350

Harmonies

Analogous

The Analogous color harmony consists of three colors that are next to each other on the color wheel.



65.0072, 64.4969, 76.0898



65.5388, 64.4969, 69.9676



64.9133, 64.4969, 64.2483

Triad

The Triadic color harmony groups three colors that are evenly spaced from another and form a triangle on the color wheel.



65.5388, 64.4969, 69.9676



59.1779, 64.4969, 60.5621



59.3310, 64.4969, 81.1520

Complementary

The Complementary color scheme is a pair of colors which are on the opposite of each other on the color wheel.



65.5388, 64.4969, 69.9676



66.2429, 74.2053, 80.6474

Split Complementary

Split-complementary colors differ from the complementary color scheme. The scheme consists of three colors, the original color and two neighbors of the complement color.



57.8279, 64.4969, 76.5638



65.5388, 64.4969, 69.9676



57.7410, 64.4969, 64.6718

Square

The Square scheme is like the rectangle color scheme, but the four colors are evenly spaced on the color wheel.



65.5388, 64.4969, 69.9676



61.2120, 64.4969, 59.0181



57.2525, 64.4969, 70.4854



61.3928, 64.4969, 82.7703

Rectangle

The Rectangle color scheme consists of four colors that form a rectangle on the color wheel.



65.5388, 64.4969, 69.9676



63.9326, 64.4969, 61.3723



57.2525, 64.4969, 70.4854



58.7453, 64.4969, 79.8931

Sweetspot

The Sweet Spot groups the original color and five complimentary colors.



65.5406, 64.4997, 69.9690



91.7357, 94.8469, 103.2462



66.0923, 64.4942, 83.0947



19.4501, 20.0137, 21.7820



0.0000, 0.0000, 0.0000



20.3446, 21.4041, 23.3091

Same Dimension

The Same Dimension uses a secret algorithm to generate beautiful new colors.



65.5406, 64.4997, 69.9690



81.5766, 79.1250, 85.6902



66.3226, 67.2370, 66.6127



14.5180, 14.4244, 15.6622



18.9078, 9.6973, 3.1432



1.4330, 0.7309, 0.4209

Inverse Universe

The Inverse Universe completely reimagines the original color for something new.



65.5406, 64.4997, 69.9690



81.5766, 79.1250, 85.6902



65.3678, 71.1383, 84.4153



14.5180, 14.4244, 15.6622



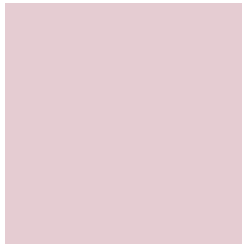
18.9078, 9.6973, 3.1432



1.4330, 0.7309, 0.4209

Previews

White Background



This preview shows how the XYZ color 65.5388, 64.4969, 69.9676 looks on a white background.

Color Contrast Check

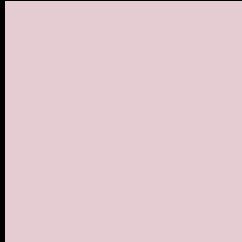
Large Text (above 18pt) WCAG AA × Fail

Any Text WCAG AA × Fail

Large Text (above 18pt) WCAG AAA × Fail

Any Text WCAG AAA × Fail

Black Background



This preview shows how the XYZ color 65.5388, 64.4969, 69.9676 looks on a black background.

Color Contrast Check

Large Text (above 18pt) WCAG AA ✓ Pass

Any Text WCAG AA ✓ Pass

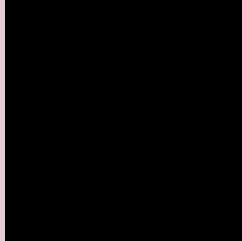
Large Text (above 18pt) WCAG AAA ✓ Pass

Any Text WCAG AAA ✓ Pass

If you want to check with other color combinations, try the [Color Contrast Checker](#).

XYZ 65.5388, 64.4969, 69.9676

Background



This preview shows how black text looks on a background with the XYZ color 65.5388, 64.4969, 69.9676.



This preview shows how white text looks on a background with the XYZ color 65.5388, 64.4969,

69.9676.

Color Blindness Simulation

Color vision deficiency is a very complex topic, and I could not describe the different causes any better than Wikipedia does, so if you want to learn more, you should check out their [article about color blindness](#).

Dichromacy



Original Color

65.5388, 64.4969, 69.9676

Protanopia

62.2513, 64.5512, 72.1294

Deuteranopia

65.8589, 64.6619, 69.9826



Tritanopia

66.7752, 64.6493, 75.9770

Trichromacy



Original Color

65.5388, 64.4969, 69.9676

Protanomaly

63.4099, 64.4392, 71.3833

Deuteranomaly

65.8589, 64.6619, 69.9826

Tritanomaly

66.3837, 64.4927, 73.9153

Monochromacy



Original Color

65.5388, 64.4969, 69.9676

Achromatopsia

62.5785, 65.8375, 71.6970

Achromatomaly

63.4718, 65.2095, 70.8694

CSS Examples

Text

The CSS property to change the color of the text to XYZ 65.5388, 64.4969, 69.9676 is called "color". The color property can be set on classes, ids or directly on the HTML element.

This example shows how text in the color rgb(229, 204, 210) looks like.

```
.text, #text, p{  
    color:rgb(229, 204, 210)  
}
```

If you want to add a text shadow in that color use the text-shadow property, you can generate a text shadow directly with our [CSS Text Shadow Generator](#).

Here you see how black text with a 4 pixel rgb(229, 204, 210) colored shadow looks like.

```
.shadow{ text-shadow: 4px 4px 2px rgb(229, 204, 210) }
```

Border

The CSS property to change the border of an element to XYZ 65.5388, 64.4969, 69.9676 is called "border". The border property can be set on classes, ids or directly on the HTML element.

This example shows the color as border, it can be applied via the CSS property "border" or "border-color".

```
.border, #border, table{ border:4px solid rgb(229, 204, 210) }
```


If only the border color should be changed use the property `border-color`.

```
.border{ border-color:rgb(229, 204, 210) }
```

If you want to add a box shadow in that color use:

Here you see how a box with a 4 pixel `rgb(229, 204, 210)` colored shadow looks like.

```
.boxshadow{ -moz-box-shadow:4px 4px 4px  
4px rgb(229, 204, 210); -webkit-box-  
shadow:4px 4px 4px 4px rgb(229, 204, 210);  
box-shadow:4px 4px 4px 4px rgb(229, 204,  
210) }
```

Background

The CSS property to change the background color of an element to XYZ 65.5388, 64.4969, 69.9676 is called "background". The background property can be set on classes, ids or directly on the HTML element.

```
.background, #background, body{  
background: rgb(229, 204, 210) }
```

If only the background color should be changed can be used:

```
.background{ background-color: rgb(229,  
204, 210) }
```

This example shows the color as background, it is applied via the CSS property "background".

To optimize and compress your CSS code, you can use our [online CSS compressor and optimizer](#) based on csstidy. If you want to create a linear or radial gradient as background or border, check our [CSS Gradient Generator](#).

Hey! You found this booklet interesting? Support Converting Colors with the new Membership Option!

The pro membership hides all ads, plus gives you double the colors in the color bucket, and more awesome pro features!

[Learn more, Memberships starting at \\$2.50/m!](#)

**Follow me
on Twitter!**

@ConvertingColor