

Converting Colors

XYZ(65.6059, 63.4915, 66.6827)

Have a look what the booklet for
XYZ(65.6059, 63.4915, 66.6827)
contains.

XYZ(65.5104, 63.5047, 66.5625)	3
<i>Conversions</i>	4
<i>Details</i>	6
<i>Harmonies</i>	12
<i>Previews</i>	24
<i>Color Blindness Simulation</i>	28
<i>CSS Examples</i>	31

Color

**XYZ(65.5104, 63.5047,
66.5625)**

Conversions

Conversions Part 1

Format	Color
Hex	E9C9CD
RGB	233, 201, 205
RGB Percent	91%, 79%, 80%
CMY	0.0863, 0.2117, 0.1961
CMYK	0.00, 0.14, 0.12, 0.09
HSL	353°, 42%, 85%
HSV	353°, 14%, 91%
XYZ	65.5104, 63.5047, 66.5625
YIQ	211.0240, 17.7880, 8.0280

Conversions

Conversions Part 2

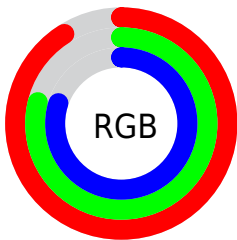
Format	Color
R _{YB}	233, 201, 205
Decimal	15321549
CIE Lab	83.71, 11.89, 2.17
CIE LCh	84, 12.089, 10.331
Yxy	63.5047, 0.3350, 0.3247
Android (android.graphics.Color)	4293511629 (0xFFE9C9CD)
YUV	211.0240, -2.9698, 19.2730
Hunter-Lab	79.6898, 7.2818, 6.2597

Details

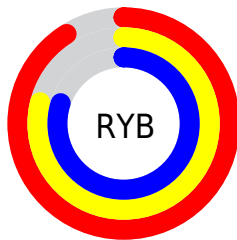
The XYZ color **65.5104, 63.5047, 66.5625** is a light color, and the websafe version is hex **FFCCCC**. A complement of this color would be **67.3717, 76.3541, 85.3195**, and the grayscale version is **61.9450, 65.1710, 70.9712**.

A 20% lighter version of the original color is **95.0500, 100.0000, 108.9000**, and **34.1511, 32.4489, 33.7415** is the 20% darker color. If you saturate the color by 10%, you get **58.1824, 52.5339, 52.7576**, and if you desaturate by 10%, it is **73.9866, 76.2572, 82.3342**.

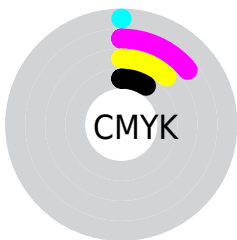
Distribution



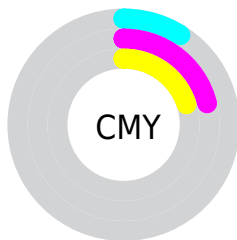
- Red (91%)
- Green (79%)
- Blue (80%)



- Red (91%)
- Yellow (79%)
- Blue (80%)



- Cyan (0%)
- Magenta (14%)
- Yellow (12%)
- Black (9%)



- Cyan (9%)
- Magenta (21%)
- Yellow (20%)

Brightness & Saturation Gradients

These gradients show how the XYZ color 65.5104, 63.5047, 66.5625 changes by changing the brightness by 10 percent. The first figure shows a shift by +10% for each color and the second figure -10%.

Similar to the brightness gradients but the following saturation gradients show a change of the XYZ color 65.5104, 63.5047, 66.5625 by changing the saturation by 10% instead.

65.5104, 63.5047,
66.5625

65.5104, 63.5047,
66.5625

434.1401,
437.3988, 466.8449

48.1413, 46.2496,
48.2698

111.8450,
109.8973, 115.9280

34.1505, 32.4429,
33.6791

141.5411,
139.8036, 147.8379

23.1727, 21.7000,
22.3718

176.0771,
174.6959, 185.1239

14.8425, 13.6366,
13.9294

215.8181,
214.9583, 228.2045

8.7945, 7.8684,
7.9334

261.1295,
260.9755, 277.4985

4.6634, 4.0108,
3.9652

312.3768,

2.0839, 1.6796,

313.1317, 333.4241

1.6063

369.9252,
371.8113, 396.4001

■ 0.6804, 0.4104,
0.2953

■ 0.0000, 0.0000,
0.0000

■ 65.5104, 63.5047,
66.5625

■ 65.5104, 63.5047,
66.5625

■ 58.1824, 52.5339,
52.7576

■ 73.9866, 76.2572,
82.3342

■ 51.9481, 43.2574,
40.8383

■ 83.6520, 90.8569,
100.1414

■ 46.7562, 35.5931,
30.7237

■ 87.4146, 96.0638,
108.5427

■ 42.5495, 29.4490,
22.3255

■ 39.2650, 24.7234,
15.5479

■ 36.8326, 21.3025,
10.2856

■ 35.1716, 19.0547,
6.4206

■ 34.1857, 17.8207,
3.8172

■ 33.8276, 17.4130,
2.7470

Harmonies

Analogous

The Analogous color harmony consists of three colors that are next to each other on the color wheel.



65.2840, 63.5047, 74.1730



65.5104, 63.5047, 66.5625



64.3262, 63.5047, 60.1276

Triad

The Triadic color harmony groups three colors that are evenly spaced from another and form a triangle on the color wheel.



65.5104, 63.5047, 66.5625



57.1223, 63.5047, 58.6107



58.6610, 63.5047, 83.8124

Complementary

The Complementary color scheme is a pair of colors which are on the opposite of each other on the color wheel.



65.5104, 63.5047, 66.5625



67.3717, 76.3541, 85.3195

Split Complementary

Split-complementary colors differ from the complementary color scheme. The scheme consists of three colors, the original color and two neighbors of the complement color.



56.5590, 63.5047, 79.0235



65.5104, 63.5047, 66.5625



55.6887, 63.5047, 64.3511

Square

The Square scheme is like the rectangle color scheme, but the four colors are evenly spaced on the color wheel.



65.5104, 63.5047, 66.5625



59.4504, 63.5047, 55.7643



55.4856, 63.5047, 71.7951



61.2774, 63.5047, 84.5131

Rectangle

The Rectangle color scheme consists of four colors that form a rectangle on the color wheel.



65.5104, 63.5047, 66.5625



62.9159, 63.5047, 57.2291



55.4856, 63.5047, 71.7951



57.8729, 63.5047, 82.6117

Sweetspot

The Sweet Spot groups the original color and five complimentary colors.



65.5122, 63.5075, 66.5638



90.4778, 93.1022, 100.4501



67.8247, 64.2736, 85.9229



19.1876, 19.6588, 21.1700



0.0000, 0.0000, 0.0000



20.3446, 21.4041, 23.3091

Same Dimension

The Same Dimension uses a secret algorithm to generate beautiful new colors.



65.5122, 63.5075, 66.5638



78.1624, 74.5845, 77.4987



67.8761, 68.9975, 65.0021



15.1420, 15.0847, 16.0331



19.2186, 9.8901, 1.6864



1.5339, 0.7865, 0.2630

Inverse Universe

The Inverse Universe completely reimagines the original color for something new.



65.5122, 63.5075, 66.5638



78.1624, 74.5845, 77.4987



64.7246, 70.1568, 87.2219



15.1420, 15.0847, 16.0331



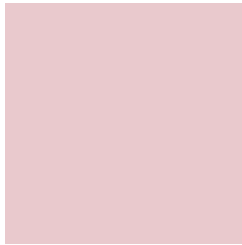
19.2186, 9.8901, 1.6864



1.5339, 0.7865, 0.2630

Previews

White Background



This preview shows how the XYZ color 65.5104, 63.5047, 66.5625 looks on a white background.

Color Contrast Check

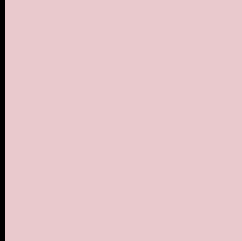
Large Text (above 18pt) WCAG AA × Fail

Any Text WCAG AA × Fail

Large Text (above 18pt) WCAG AAA × Fail

Any Text WCAG AAA × Fail

Black Background



This preview shows how the XYZ color 65.5104, 63.5047, 66.5625 looks on a black background.

Color Contrast Check

Large Text (above 18pt) WCAG AA ✓ Pass

Any Text WCAG AA ✓ Pass

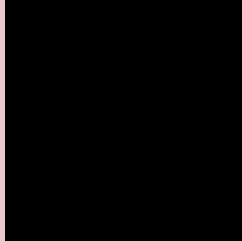
Large Text (above 18pt) WCAG AAA ✓ Pass

Any Text WCAG AAA ✓ Pass

If you want to check with other color combinations, try the [Color Contrast Checker](#).

XYZ 65.5104, 63.5047, 66.5625

Background



This preview shows how black text looks on a background with the XYZ color 65.5104, 63.5047, 66.5625.

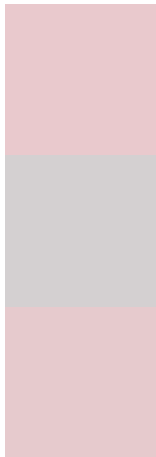


This preview shows how white text looks on a background with the XYZ color 65.5104, 63.5047,

Color Blindness Simulation

Color vision deficiency is a very complex topic, and I could not describe the different causes any better than Wikipedia does, so if you want to learn more, you should check out their [article about color blindness](#).

Dichromacy



Original Color

65.5104, 63.5047, 66.5625

Protanopia

61.2159, 63.7122, 69.3929

Deuteranopia

64.7731, 63.4718, 66.5950



Tritanopia

66.6208, 63.2456, 72.9863

Trichromacy



Original Color

65.5104, 63.5047, 66.5625

Protanomaly

62.7317, 63.4324, 68.6119

Deuteranomaly

65.0950, 63.6378, 66.6100

Tritanomaly

66.3438, 63.5041, 70.3888

Monochromacy



Original Color

65.5104, 63.5047, 66.5625

Achromatopsia

61.9161, 65.1406, 70.9381

Achromatomaly

63.0349, 64.2892, 69.4084

CSS Examples

Text

The CSS property to change the color of the text to XYZ 65.5104, 63.5047, 66.5625 is called "color". The color property can be set on classes, ids or directly on the HTML element.

This example shows how text in the color `rgb(233, 201, 205)` looks like.

```
.text, #text, p{  
    color:rgb(233, 201, 205)  
}
```

If you want to add a text shadow in that color use the text-shadow property, you can generate a text shadow directly with our [CSS Text Shadow Generator](#).

Here you see how black text with a 4 pixel rgb(233, 201, 205) colored shadow looks like.

```
.shadow{ text-shadow: 4px 4px 2px rgb(233, 201, 205) }
```

Border

The CSS property to change the border of an element to XYZ 65.5104, 63.5047, 66.5625 is called "border". The border property can be set on classes, ids or directly on the HTML element.

This example shows the color as border, it can be applied via the CSS property "border" or "border-color".

```
.border, #border, table{ border:4px solid rgb(233, 201, 205) }
```


If only the border color should be changed use the property border-color.

```
.border{ border-color:rgb(233, 201, 205) }
```

If you want to add a box shadow in that color use:

Here you see how a box with a 4 pixel rgb(233, 201, 205) colored shadow looks like.

```
.boxshadow{ -moz-box-shadow:4px 4px 4px  
4px rgb(233, 201, 205); -webkit-box-  
shadow:4px 4px 4px 4px rgb(233, 201, 205);  
box-shadow:4px 4px 4px 4px rgb(233, 201,  
205) }
```

Background

The CSS property to change the background color of an element to XYZ 65.5104, 63.5047, 66.5625 is called "background". The background property can be set on classes, ids or directly on the HTML element.

```
.background, #background, body{  
background: rgb(233, 201, 205) }
```

If only the background color should be changed can be used:

```
.background{ background-color: rgb(233,  
201, 205) }
```

This example shows the color as background, it is applied via the CSS property "background".

To optimize and compress your CSS code, you can use our [online CSS compressor and optimizer](#) based on csstidy. If you want to create a linear or radial gradient as background or border, check our [CSS Gradient Generator](#).

Hey! You found this booklet interesting? Support Converting Colors with the new Membership Option!

The pro membership hides all ads, plus gives you double the colors in the color bucket, and more awesome pro features!

[Learn more, Memberships starting at \\$2.50/m!](#)

**Follow me
on Twitter!**

@ConvertingColor