

Converting Colors

XYZ(65.6230, 66.5549, 67.1496)

Have a look what the booklet for
XYZ(65.6230, 66.5549, 67.1496)
contains.

XYZ(65.4985, 66.3396, 67.1103)	3
<i>Conversions</i>	4
<i>Details</i>	6
<i>Harmonies</i>	12
<i>Previews</i>	24
<i>Color Blindness Simulation</i>	28
<i>CSS Examples</i>	31

Color

**XYZ(65.4985, 66.3396,
67.1103)**

Conversions

Conversions Part 1

Format	Color
Hex	E3D1CD
RGB	227, 209, 205
RGB Percent	89%, 82%, 80%
CMY	0.1098, 0.1804, 0.1961
CMYK	0.00, 0.08, 0.10, 0.11
HSL	11°, 28%, 85%
HSV	11°, 10%, 89%
XYZ	65.4985, 66.3396, 67.1103
YIQ	213.9260, 12.0120, 2.5720

Conversions

Conversions Part 2

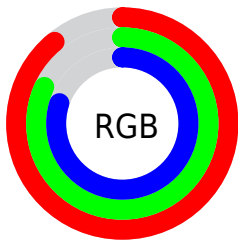
Format	Color
R _Y B	227, 210, 205
Decimal	14930381
CIE Lab	85.17, 5.56, 4.22
CIE LCh	85, 6.986, 37.206
Yxy	66.3396, 0.3292, 0.3335
Android (android.graphics.Color)	4293120461 (0xFFE3D1CD)
YUV	213.9260, -4.4005, 11.4659
Hunter-Lab	81.4491, 1.0074, 8.1622

Details

The XYZ color **65.4985, 66.3396, 67.1103** is a light color, and the websafe version is hex **CCCCCC**. A complement of this color would be **65.4295, 71.2994, 82.9875**, and the grayscale version is **63.8913, 67.2186, 73.2011**.

A 20% lighter version of the original color is **95.0500, 100.0000, 108.9000**, and **34.3205, 34.4477, 34.1183** is the 20% darker color. If you saturate the color by 10%, you get **58.6618, 56.7373, 52.2790**, and if you desaturate by 10%, it is **73.2675, 77.1687, 84.2153**.

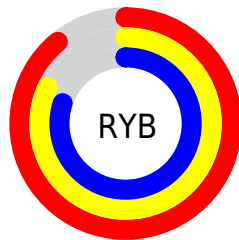
Distribution



Red (89%)

Green (82%)

Blue (80%)



Red (89%)

Yellow (82%)

Blue (80%)

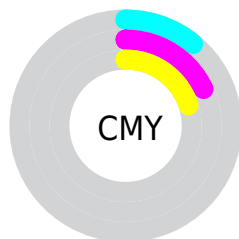


Cyan (0%)

Magenta (8%)

Yellow (10%)

Black (11%)



Cyan (11%)

Magenta (18%)

Yellow (20%)

Brightness & Saturation Gradients

These gradients show how the XYZ color 65.4985, 66.3396, 67.1103 changes by changing the brightness by 10 percent. The first figure shows a shift by +10% for each color and the second figure -10%.

Similar to the brightness gradients but the following saturation gradients show a change of the XYZ color 65.4985, 66.3396, 67.1103 by changing the saturation by 10% instead.

65.4985, 66.3396,
67.1103

65.4985, 66.3396,
67.1103

434.0982,
447.5904, 468.8495

48.1316, 48.5481,
48.7121

111.8280,
113.9736, 116.7206

34.1428, 34.2612,
34.0272

141.5213,
144.5849, 148.7698

23.1667, 23.0943,
22.6369

176.0541,
180.2384, 186.2064

14.8380, 14.6632,
14.1229

215.7917,
221.3182, 229.4489

8.7914, 8.5833,
8.0665

261.0996,
268.2090, 278.9160

4.6614, 4.4704,
4.0491

312.3431,

2.0827, 1.9400,

321.2950, 335.0260

1.6523

369.8875,
380.9607, 398.1977

■ 0.6798, 0.5723,
0.3278

■ 0.0000, 0.0000,
0.0000

■ 65.4985, 66.3396,
67.1103

■ 65.4985, 66.3396,
67.1103

■ 58.6618, 56.7373,
52.2790

■ 73.2675, 77.1687,
84.2153

■ 52.7167, 48.3100,
39.6214

■ 81.9966, 89.2569,
103.6798

■ 47.6275, 41.0149,
29.0362

■ 85.4889, 95.0711,
108.4525

■ 43.3541, 34.8034,
20.4124

■ 39.8530, 29.6232,
13.6286

■ 37.0766, 25.4177,
8.5498

■ 34.9718, 22.1246,
5.0224

■ 33.4774, 19.6742,
2.8649

■ 32.5067, 17.9805,
1.7774

Harmonies

Analogous

The Analogous color harmony consists of three colors that are next to each other on the color wheel.



66.1085, 66.3396, 71.1492



65.4985, 66.3396, 67.1103



64.2352, 66.3396, 64.5228

Triad

The Triadic color harmony groups three colors that are evenly spaced from another and form a triangle on the color wheel.



65.4985, 66.3396, 67.1103



60.3009, 66.3396, 68.9219



63.4347, 66.3396, 81.1901

Complementary

The Complementary color scheme is a pair of colors which are on the opposite of each other on the color wheel.



65.4985, 66.3396, 67.1103



65.4295, 71.2994, 82.9875

Split Complementary

Split-complementary colors differ from the complementary color scheme. The scheme consists of three colors, the original color and two neighbors of the complement color.



61.8870, 66.3396, 80.5333



65.4985, 66.3396, 67.1103



60.0947, 66.3396, 73.3268

Square

The Square scheme is like the rectangle color scheme, but the four colors are evenly spaced on the color wheel.



65.4985, 66.3396, 67.1103



61.2389, 66.3396, 65.5379



60.6707, 66.3396, 77.6090



64.9042, 66.3396, 79.3683

Rectangle

The Rectangle color scheme consists of four colors that form a rectangle on the color wheel.



65.4985, 66.3396, 67.1103



63.2016, 66.3396, 63.9056



60.6707, 66.3396, 77.6090



62.9062, 66.3396, 81.2531

Sweetspot

The Sweet Spot groups the original color and five complimentary colors.



65.5003, 66.3425, 67.1117



91.8787, 95.5892, 101.8872



66.8751, 65.3402, 79.1360



19.4885, 20.2131, 21.4169



0.0000, 0.0000, 0.0000



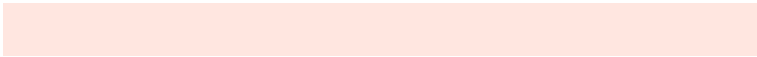
20.3446, 21.4041, 23.3091

Same Dimension

The Same Dimension uses a secret algorithm to generate beautiful new colors.



65.5003, 66.3425, 67.1117



83.0371, 83.2400, 82.4962



68.2047, 71.7512, 68.0132



14.5881, 14.7901, 14.9903



19.0048, 10.5837, 1.0412



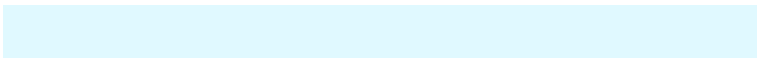
1.4660, 0.9053, 0.0975

Inverse Universe

The Inverse Universe completely reimagines the original color for something new.



65.4295, 71.2994, 82.9875



82.9236, 91.1493, 107.8308



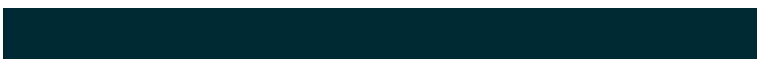
62.6698, 65.7800, 82.0676



14.5727, 15.8668, 18.4389



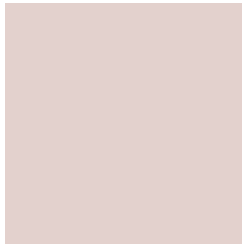
18.3671, 23.7964, 46.0083



1.4155, 1.8750, 3.4193

Previews

White Background



This preview shows how the XYZ color 65.4985, 66.3396, 67.1103 looks on a white background.

Color Contrast Check

Large Text (above 18pt) WCAG AA × Fail

Any Text WCAG AA × Fail

Large Text (above 18pt) WCAG AAA × Fail

Any Text WCAG AAA × Fail

Black Background



This preview shows how the XYZ color 65.4985, 66.3396, 67.1103 looks on a black background.

Color Contrast Check

Large Text (above 18pt) WCAG AA ✓ Pass

Any Text WCAG AA ✓ Pass

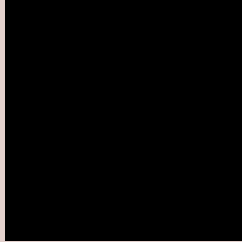
Large Text (above 18pt) WCAG AAA ✓ Pass

Any Text WCAG AAA ✓ Pass

If you want to check with other color combinations, try the [Color Contrast Checker](#).

XYZ 65.4985, 66.3396, 67.1103

Background



This preview shows how black text looks on a background with the XYZ color 65.4985, 66.3396, 67.1103.



This preview shows how white text looks on a background with the XYZ color 65.4985, 66.3396,

Color Blindness Simulation

Color vision deficiency is a very complex topic, and I could not describe the different causes any better than Wikipedia does, so if you want to learn more, you should check out their [article about color blindness](#).

Dichromacy



Original Color

65.4985, 66.3396, 67.1103

Protanopia

63.7194, 66.4974, 68.5084

Deuteranopia

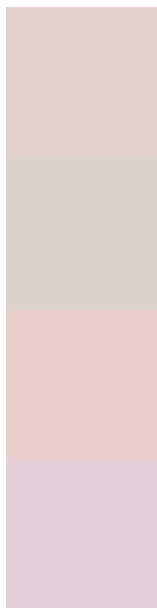
67.8040, 66.4317, 67.6415



Tritanopia

67.7037, 66.1283, 79.0077

Trichromacy



Original Color

65.4985, 66.3396, 67.1103

Protanomaly

64.2536, 66.4169, 67.8257

Deuteranomaly

67.0577, 66.4055, 67.6757

Tritanomaly

66.7024, 66.0775, 74.2044

Monochromacy



Original Color

65.4985, 66.3396, 67.1103

Achromatopsia

63.9157, 67.2443, 73.2291

Achromatomaly

64.5148, 66.8502, 71.1311

CSS Examples

Text

The CSS property to change the color of the text to XYZ 65.4985, 66.3396, 67.1103 is called "color". The color property can be set on classes, ids or directly on the HTML element.

This example shows how text in the color `rgb(227, 209, 205)` looks like.

```
.text, #text, p{  
    color:rgb(227, 209, 205)  
}
```

If you want to add a text shadow in that color use the text-shadow property, you can generate a text shadow directly with our [CSS Text Shadow Generator](#).

Here you see how black text with a 4 pixel rgb(227, 209, 205) colored shadow looks like.

```
.shadow{ text-shadow: 4px 4px 2px rgb(227, 209, 205) }
```

Border

The CSS property to change the border of an element to XYZ 65.4985, 66.3396, 67.1103 is called "border". The border property can be set on classes, ids or directly on the HTML element.

This example shows the color as border, it can be applied via the CSS property "border" or "border-color".

```
.border, #border, table{ border:4px solid rgb(227, 209, 205) }
```


If only the border color should be changed use the property border-color.

```
.border{ border-color:rgb(227, 209, 205) }
```

If you want to add a box shadow in that color use:

Here you see how a box with a 4 pixel rgb(227, 209, 205) colored shadow looks like.

```
.boxshadow{ -moz-box-shadow:4px 4px 4px  
4px rgb(227, 209, 205); -webkit-box-  
shadow:4px 4px 4px 4px rgb(227, 209, 205);  
box-shadow:4px 4px 4px 4px rgb(227, 209,  
205) }
```

Background

The CSS property to change the background color of an element to XYZ 65.4985, 66.3396, 67.1103 is called "background". The background property can be set on classes, ids or directly on the HTML element.

```
.background, #background, body{  
background: rgb(227, 209, 205) }
```

If only the background color should be changed can be used:

```
.background{ background-color: rgb(227,  
209, 205) }
```

This example shows the color as background, it is applied via the CSS property "background".

To optimize and compress your CSS code, you can use our [online CSS compressor and optimizer](#) based on csstidy. If you want to create a linear or radial gradient as background or border, check our [CSS Gradient Generator](#).

Hey! You found this booklet interesting? Support Converting Colors with the new Membership Option!

The pro membership hides all ads, plus gives you double the colors in the color bucket, and more awesome pro features!

[Learn more, Memberships starting at \\$2.50/m!](#)

**Follow me
on Twitter!**

@ConvertingColor