

Converting Colors

XYZ(65.6365, 65.9437, 68.8988)

Have a look what the booklet for
XYZ(65.6365, 65.9437, 68.8988)
contains.

XYZ(65.6196, 65.9967, 68.9546)	3
<i>Conversions</i>	4
<i>Details</i>	6
<i>Harmonies</i>	12
<i>Previews</i>	24
<i>Color Blindness Simulation</i>	28
<i>CSS Examples</i>	31

Color

**XYZ(65.6196, 65.9967,
68.9546)**

Conversions

Conversions Part 1

Format	Color
Hex	E3D0D0
RGB	227, 208, 208
RGB Percent	89%, 82%, 82%
CMY	0.1098, 0.1843, 0.1843
CMYK	0.00, 0.08, 0.08, 0.11
HSL	0°, 25%, 85%
HSV	0°, 8%, 89%
XYZ	65.6196, 65.9967, 68.9546
YIQ	213.6810, 11.3240, 4.0280

Conversions

Conversions Part 2

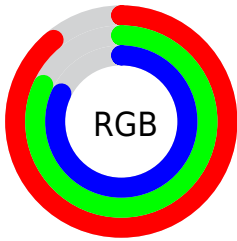
Format	Color
R _Y B	227, 208, 208
Decimal	14930128
CIE Lab	84.99, 6.59, 2.38
CIE LCh	85, 7.005, 19.848
Yxy	65.9967, 0.3272, 0.3290
Android (android.graphics.Color)	4293120208 (0xFFE3D0D0)
YUV	213.6810, -2.8007, 11.6808
Hunter-Lab	81.2384, 2.0148, 6.5419

Details

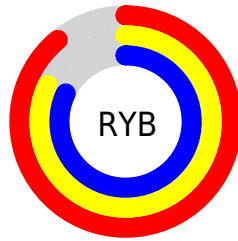
The XYZ color **65.6196, 65.9967, 68.9546** is a light color, and the websafe version is hex **CCCCCC**. A complement of this color would be **67.3464, 73.8928, 83.3871**, and the grayscale version is **63.7166, 67.0348, 73.0009**.

A 20% lighter version of the original color is **95.0500, 100.0000, 108.9000**, and **34.4016, 34.2150, 35.3628** is the 20% darker color. If you saturate the color by 10%, you get **57.8816, 54.6744, 53.5684**, and if you desaturate by 10%, it is **74.5528, 79.0682, 86.7128**.

Distribution



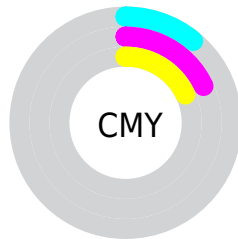
- Red (89%)
- Green (82%)
- Blue (82%)



- Red (89%)
- Yellow (82%)
- Blue (82%)



- Cyan (0%)
- Magenta (8%)
- Yellow (8%)
- Black (11%)



- Cyan (11%)
- Magenta (18%)
- Yellow (18%)

Brightness & Saturation Gradients

These gradients show how the XYZ color 65.6196, 65.9967, 68.9546 changes by changing the brightness by 10 percent. The first figure shows a shift by +10% for each color and the second figure -10%.

Similar to the brightness gradients but the following saturation gradients show a change of the XYZ color 65.6196, 65.9967, 68.9546 by changing the saturation by 10% instead.

65.6196, 65.9967,
68.9546

65.6196, 65.9967,
68.9546

434.5253,
446.3651, 475.5604

48.2302, 48.2697,
50.2032

112.0009,
113.4816, 119.3838

34.2213, 34.0405,
35.2026

141.7236,
144.0083, 151.8987

23.2273, 22.9247,
23.5342

176.2881,
179.5704, 189.8386

14.8831, 14.5379,
14.7794

216.0598,
220.5522, 233.6219

8.8231, 8.4958,
8.5198

261.4040,
267.3382, 283.6671

4.6822, 4.4138,
4.3368

312.6861,

2.0948, 1.9076,

320.3128, 340.3930

1.8119

370.2714,
379.8603, 404.2179

■ 0.6864, 0.5529,
0.4358

■ 0.0000, 0.0000,
0.0000

■ 65.6196, 65.9967,
68.9546

■ 65.6196, 65.9967,
68.9546

■ 57.8816, 54.6744,
53.5684

■ 74.5528, 79.0682,
86.7128

■ 51.2830, 45.0189,
40.4499

■ 84.7231, 93.9495,
106.9330

■ 45.7715, 36.9542,
29.4932

■ 85.4889, 95.0711,
108.4525

■ 41.2890, 30.3950,
20.5823

■ 37.7717, 25.2480,
13.5905

■ 35.1487, 21.4095,
8.3768

■ 33.3395, 18.7618,
4.7811

■ 32.2491, 17.1660,
2.6146

■ 31.7399, 16.4205,
1.6029

Harmonies

Analogous

The Analogous color harmony consists of three colors that are next to each other on the color wheel.



65.7562, 65.9967, 73.3987



65.6196, 65.9967, 68.9546



64.7009, 65.9967, 65.4320

Triad

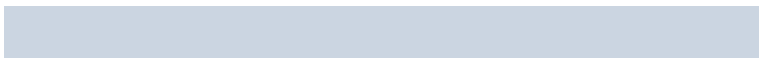
The Triadic color harmony groups three colors that are evenly spaced from another and form a triangle on the color wheel.



65.6196, 65.9967, 68.9546



60.4416, 65.9967, 66.4107



62.1956, 65.9967, 80.7387

Complementary

The Complementary color scheme is a pair of colors which are on the opposite of each other on the color wheel.



65.6196, 65.9967, 68.9546



67.3464, 73.8928, 83.3871

Split Complementary

Split-complementary colors differ from the complementary color scheme. The scheme consists of three colors, the original color and two neighbors of the complement color.



60.7954, 65.9967, 78.6940



65.6196, 65.9967, 68.9546



59.7940, 65.9967, 70.3413

Square

The Square scheme is like the rectangle color scheme, but the four colors are evenly spaced on the color wheel.



65.6196, 65.9967, 68.9546



61.7053, 65.9967, 64.0064



59.9224, 65.9967, 74.8442



63.7617, 65.9967, 80.3293

Rectangle

The Rectangle color scheme consists of four colors that form a rectangle on the color wheel.



65.6196, 65.9967, 68.9546



63.7770, 65.9967, 64.0210



59.9224, 65.9967, 74.8442



61.6904, 65.9967, 80.3124

Sweetspot

The Sweet Spot groups the original color and five complimentary colors.



65.6214, 65.9996, 68.9560



91.4510, 94.7338, 101.7446



68.1004, 66.9896, 82.0149



19.3736, 19.9834, 21.3786



0.0000, 0.0000, 0.0000



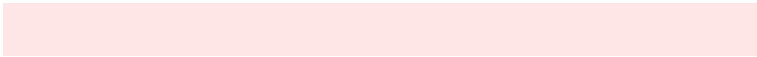
20.3446, 21.4041, 23.3091

Same Dimension

The Same Dimension uses a secret algorithm to generate beautiful new colors.



65.6214, 65.9996, 68.9560



83.6121, 83.2638, 86.1600



68.0065, 70.7698, 69.7510



14.3773, 14.3685, 14.9201



18.4754, 9.5250, 0.8648



1.3654, 0.7040, 0.0639

Inverse Universe

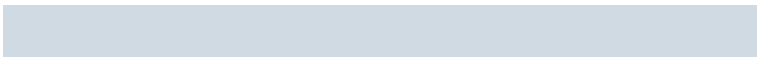
The Inverse Universe completely reimagines the original color for something new.



67.3464, 73.8928, 83.3871



86.2812, 95.4770, 108.4891



64.8204, 68.8408, 82.5451



14.8072, 16.3359, 18.5170



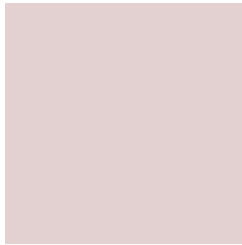
24.0988, 35.2598, 47.9188



1.7809, 2.6057, 3.5411

Previews

White Background



This preview shows how the XYZ color 65.6196, 65.9967, 68.9546 looks on a white background.

Color Contrast Check

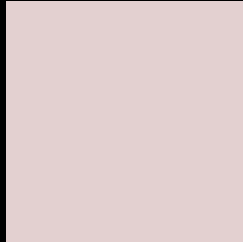
Large Text (above 18pt) WCAG AA × Fail

Any Text WCAG AA × Fail

Large Text (above 18pt) WCAG AAA × Fail

Any Text WCAG AAA × Fail

Black Background



This preview shows how the XYZ color 65.6196, 65.9967, 68.9546 looks on a black background.

Color Contrast Check

Large Text (above 18pt) WCAG AA ✓ Pass

Any Text WCAG AA ✓ Pass

Large Text (above 18pt) WCAG AAA ✓ Pass

Any Text WCAG AAA ✓ Pass

If you want to check with other color combinations, try the [Color Contrast Checker](#).

XYZ 65.6196, 65.9967, 68.9546

Background



This preview shows how black text looks on a background with the XYZ color 65.6196, 65.9967, 68.9546.



This preview shows how white text looks on a background with the XYZ color 65.6196, 65.9967,

Color Blindness Simulation

Color vision deficiency is a very complex topic, and I could not describe the different causes any better than Wikipedia does, so if you want to learn more, you should check out their [article about color blindness](#).

Dichromacy



Original Color

65.6196, 65.9967, 68.9546

Protanopia

63.5424, 65.9934, 70.3617

Deuteranopia

67.2716, 65.7585, 69.4687



Tritanopia

67.5692, 66.0746, 78.2996

Trichromacy



Original Color

65.6196, 65.9967, 68.9546

Protanomaly

64.3740, 66.0688, 69.6813

Deuteranomaly

66.5349, 65.7350, 69.5030

Tritanomaly

66.8321, 66.1294, 74.8875

Monochromacy



Original Color

65.6196, 65.9967, 68.9546

Achromatopsia

63.9157, 67.2443, 73.2291

Achromatomaly

64.6406, 66.9005, 71.7935

CSS Examples

Text

The CSS property to change the color of the text to XYZ 65.6196, 65.9967, 68.9546 is called "color". The color property can be set on classes, ids or directly on the HTML element.

This example shows how text in the color `rgb(227, 208, 208)` looks like.

```
.text, #text, p{  
    color:rgb(227, 208, 208)  
}
```

If you want to add a text shadow in that color use the text-shadow property, you can generate a text shadow directly with our [CSS Text Shadow Generator](#).

Here you see how black text with a 4 pixel rgb(227, 208, 208) colored shadow looks like.

```
.shadow{ text-shadow: 4px 4px 2px rgb(227, 208, 208) }
```

Border

The CSS property to change the border of an element to XYZ 65.6196, 65.9967, 68.9546 is called "border". The border property can be set on classes, ids or directly on the HTML element.

This example shows the color as border, it can be applied via the CSS property "border" or "border-color".

```
.border, #border, table{ border:4px solid rgb(227, 208, 208) }
```


If only the border color should be changed use the property `border-color`.

```
.border{ border-color:rgb(227, 208, 208) }
```

If you want to add a box shadow in that color use:

Here you see how a box with a 4 pixel `rgb(227, 208, 208)` colored shadow looks like.

```
.boxshadow{ -moz-box-shadow:4px 4px 4px 4px rgb(227, 208, 208); -webkit-box-shadow:4px 4px 4px 4px rgb(227, 208, 208); box-shadow:4px 4px 4px 4px rgb(227, 208, 208) }
```

Background

The CSS property to change the background color of an element to XYZ 65.6196, 65.9967, 68.9546 is called "background". The background property can be set on classes, ids or directly on the HTML element.

```
.background, #background, body{  
background: rgb(227, 208, 208) }
```

If only the background color should be changed can be used:

```
.background{ background-color: rgb(227,  
208, 208) }
```

This example shows the color as background, it is applied via the CSS property "background".

To optimize and compress your CSS code, you can use our [online CSS compressor and optimizer](#) based on csstidy. If you want to create a linear or radial gradient as background or border, check our [CSS Gradient Generator](#).

Hey! You found this booklet interesting? Support Converting Colors with the new Membership Option!

The pro membership hides all ads, plus gives you double the colors in the color bucket, and more awesome pro features!

[Learn more, Memberships starting at \\$2.50/m!](#)

**Follow me
on Twitter!**

@ConvertingColor